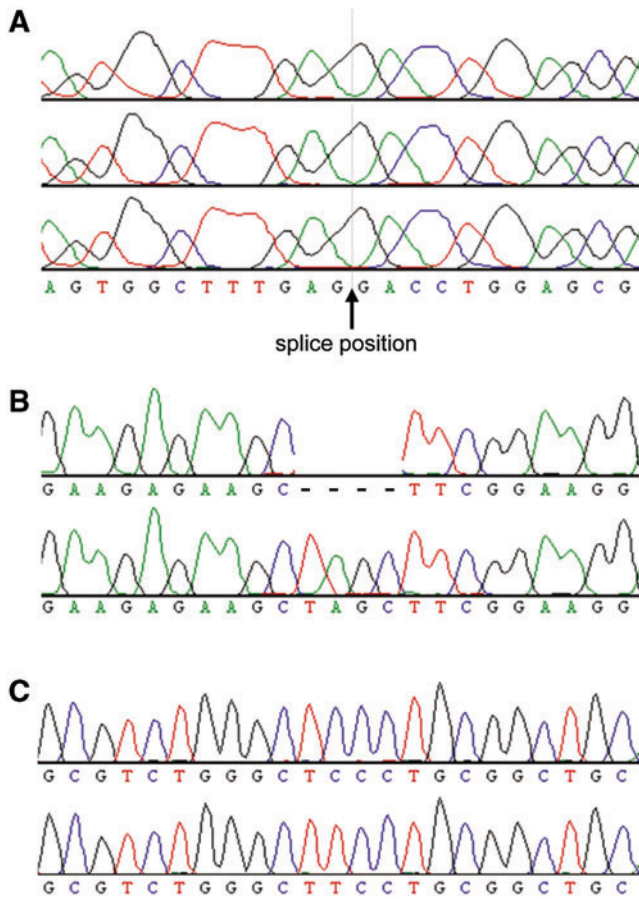


Supplementary Data



SUPPLEMENTARY FIG. S1. *MYO7A* sequences after reconstitution from dual vectors. Sequences with an artificial insertion and a point mutation both located inside of the overlap region. **(A)** Chromatograms from reconstituted hybrid platform. The splice junction at position 2904/2905 is marked. **(B)** Chromatograms of *Hind*III fill-in at position 2635 of *MYO7A* mixed with *MYO7A* wild type. **(C)** Chromatograms of T-to-C point mutation at position 2381 of *MYO7A* mixed with *MYO7A* wild type.