

SUPPLEMENTARY ONLINE DATA

Protein disulfide-isomerase interacts with soluble guanylyl cyclase via a redox-based mechanism and modulates its activity

Erin J. HECKLER¹, Pierre-Antoine CRASSOUS, Padmamalini BASKARAN² and Annie BEUVE

Department of Pharmacology and Physiology, New Jersey Medical School, UMDNJ, Newark, NJ 07103, U.S.A.

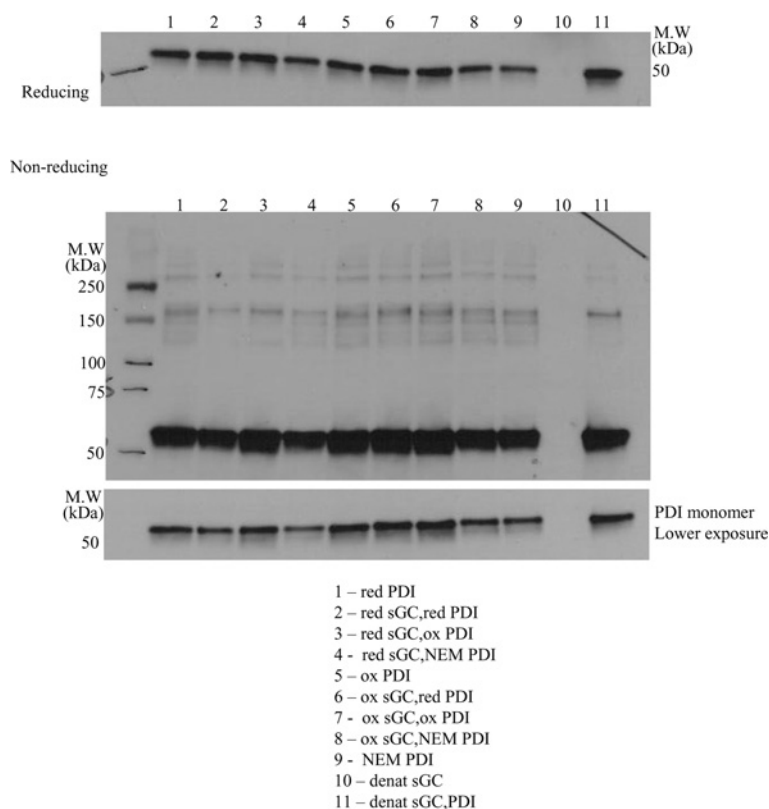


Figure S1 Representative redox blots of reducing and non-reducing Western blots probed for PDI

Lanes numbered 1–11 are redox samples as labelled. denat, denatured; red, reduced; ox, oxidized.

¹ To whom correspondence should be addressed (email heckleer@umdnj.edu).

² Present address: College of Health Sciences, School of Pharmacy, University of Wyoming, Laramie, WY 82071, U.S.A.

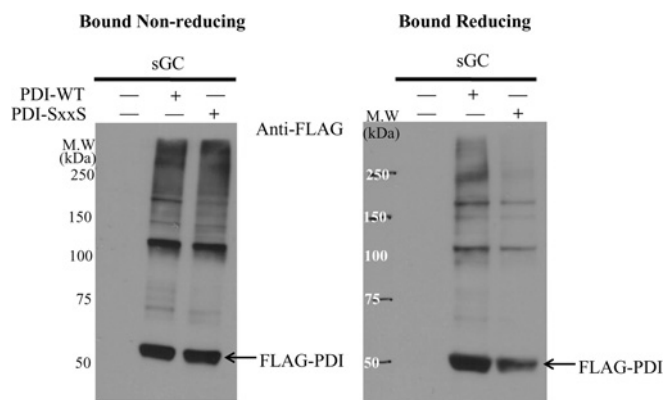


Figure S2 FLAG IP blots

Anti-FLAG antibodies detected a smear under non-reducing conditions, which was expected, as PDI interacts with many proteins.

Received 26 February 2013/11 March 2013; accepted 11 March 2013
 Published as BJ Immediate Publication 11 March 2013, doi:10.1042/BJ20130298