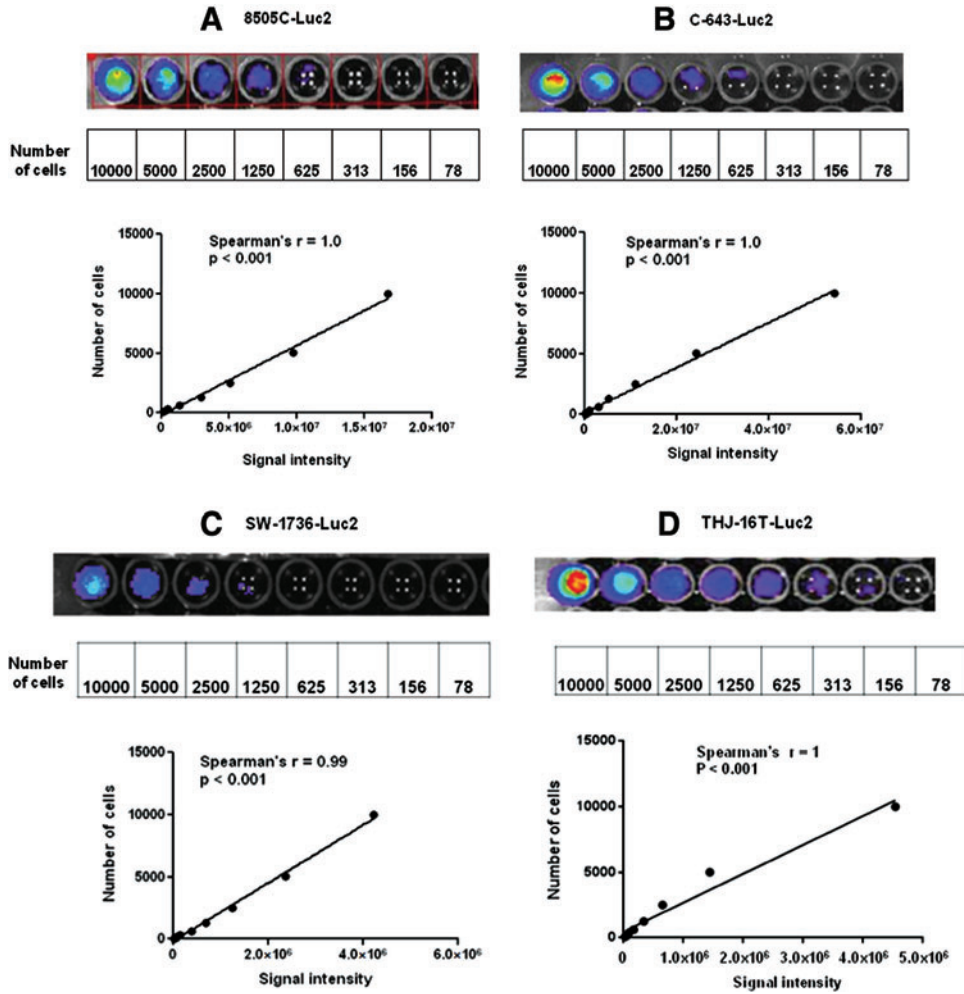
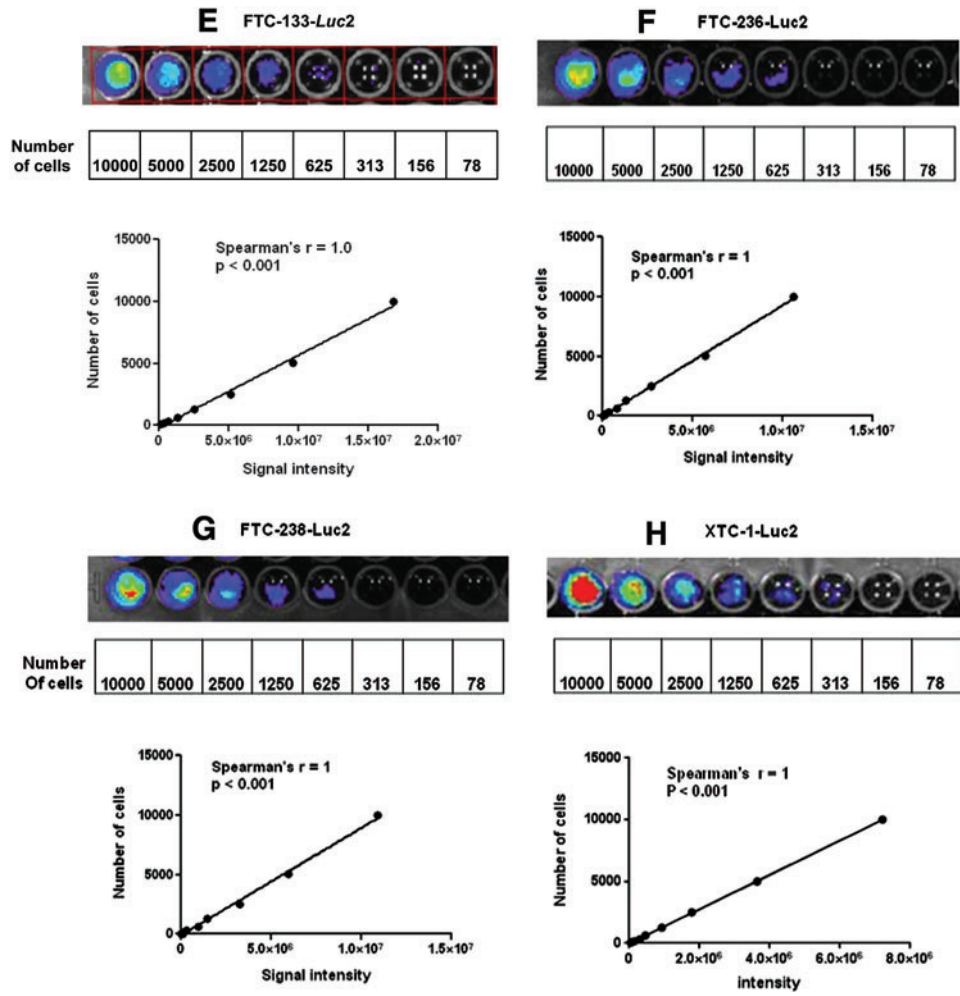


Supplementary Data



SUPPLEMENTARY FIG. S1. Generation of *Luc2* reporter cells. Human anaplastic thyroid cancer cells 8505C, C-643, SW-1736, and THJ-16T (A–D), and follicular thyroid cancer cells FTC-133, FTC-236, and FTC-238 (E–G), were transfected with a linearized pGL4.51[*luc2*/CMV/Neo] vector, and G418-resistant cells were amplified. Hurthle cell carcinoma cell line XTC-1 was transduced with lentivirus containing *Luc2*-eGFP reporter genes, and selected with puromycin (H). Luciferase activity was measured using the Xenogen IVIS Spectrum system. A bioluminescent image is shown for each cell line. Signal intensity was quantified as the sum of all detected photon counts within a region of interest using the IVIS Living Image software. (continued)



SUPPLEMENTARY FIG. S1. (Continued).