

**Fig. S1. Geographic distribution throughout Japan of the 12 participating hospitals (in gray).**

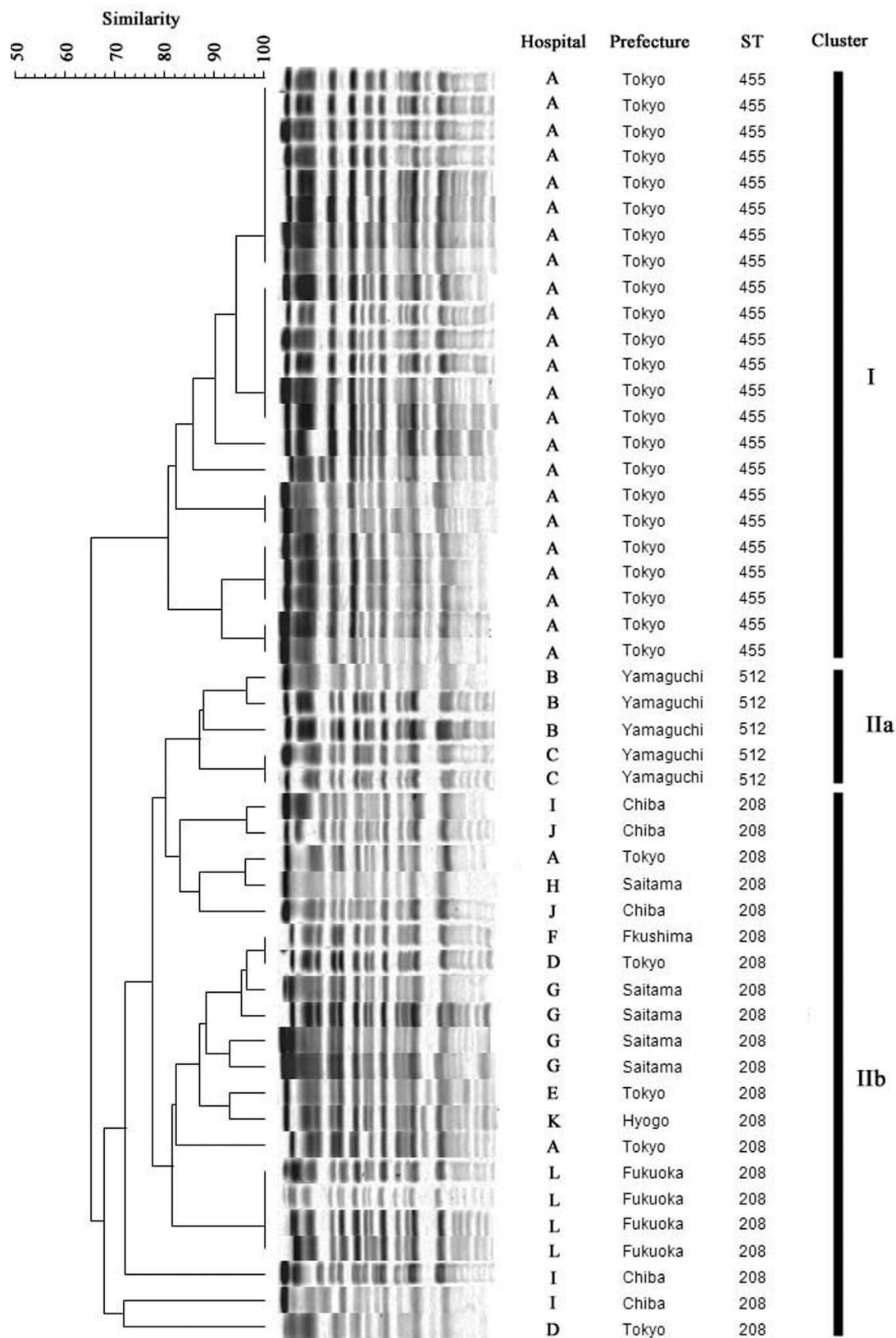


Fig. S2. PFGE pattern analysis, showing that the 49 isolates could be divided into 2 clusters with more than 70% similarity. The isolates belonging to cluster I were ST455, those belonging to subcluster IIa were ST512, and those belonging to cluster IIb were ST208.