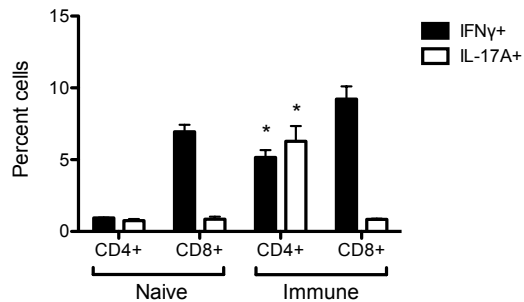
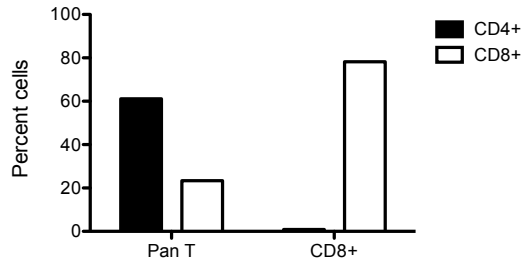
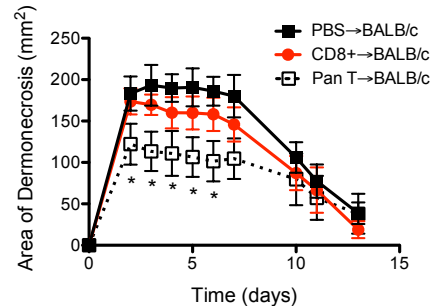


A**B****C**

Supplementary Figure 2. CD4⁺ T cell responses contributed to protective immunity. (A) There were higher percentages of CD4⁺ IFN γ ⁺ and IL-17A⁺ staining T cells by ICS in adoptively transferred immune BALB/c T cells, compared with naïve T cells. In contrast, there were no differences in CD8⁺ T cell populations between naïve and immune T cells. (B) Percentage of CD4⁺ and CD8⁺ T cells in adoptively transferred T cells ("Pan T") by flow cytometry. Purification of CD8⁺ T cells resulted in undetectable percentages of CD4⁺ T cells. (C) Adoptive transfer of immune BALB/c CD8⁺ T cells did not confer protection in BALB/c mice (n=5 mice/group). * indicates p < 0.05 compared with the naïve group. Data are presented as mean \pm SEM. The results of one representative experiment are presented; each was repeated at least once.