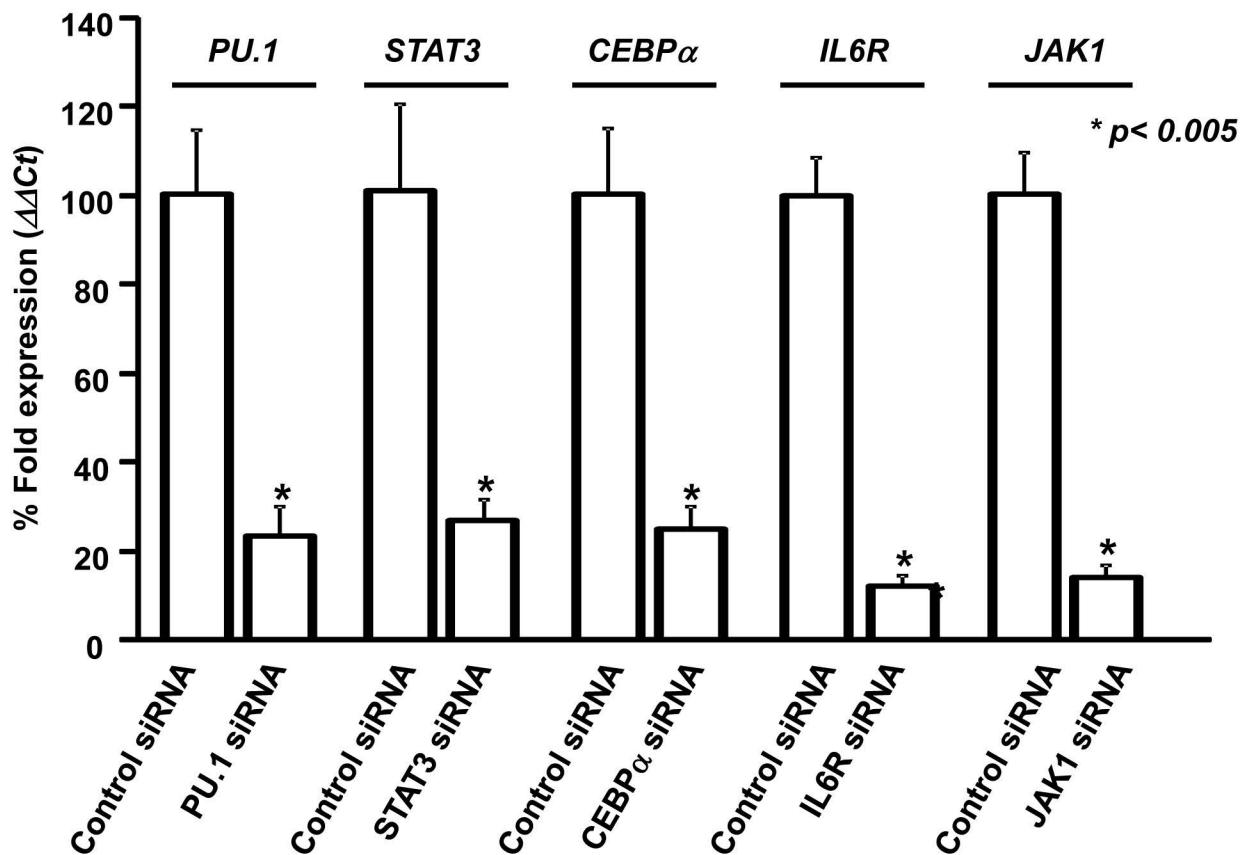


Figure S1



Supplementary figure S1: Quantification of siRNA mediated knockdown of *PU.1*, *STAT3*, *CEBP α* , *IL6R* and *JAK1* in human hepatocytes

Hepatocytes were transfected with either non-specific (control) siRNA or siRNAs specific for *PU.1*, *STAT3*, *CEBP α* , *IL6R* and *JAK1*. RNA was isolated and individual gene expression levels were determined by qPCR. The $\Delta\Delta Ct$ values were calculated by normalizing the threshold (CT) values with GAPDH and individual gene expression levels in controls. The '*' represents p value < 0.005 calculated by two-tailed t test. Error bars represent Standard Deviations (SD) obtained from three independent replicates.

Figure S2

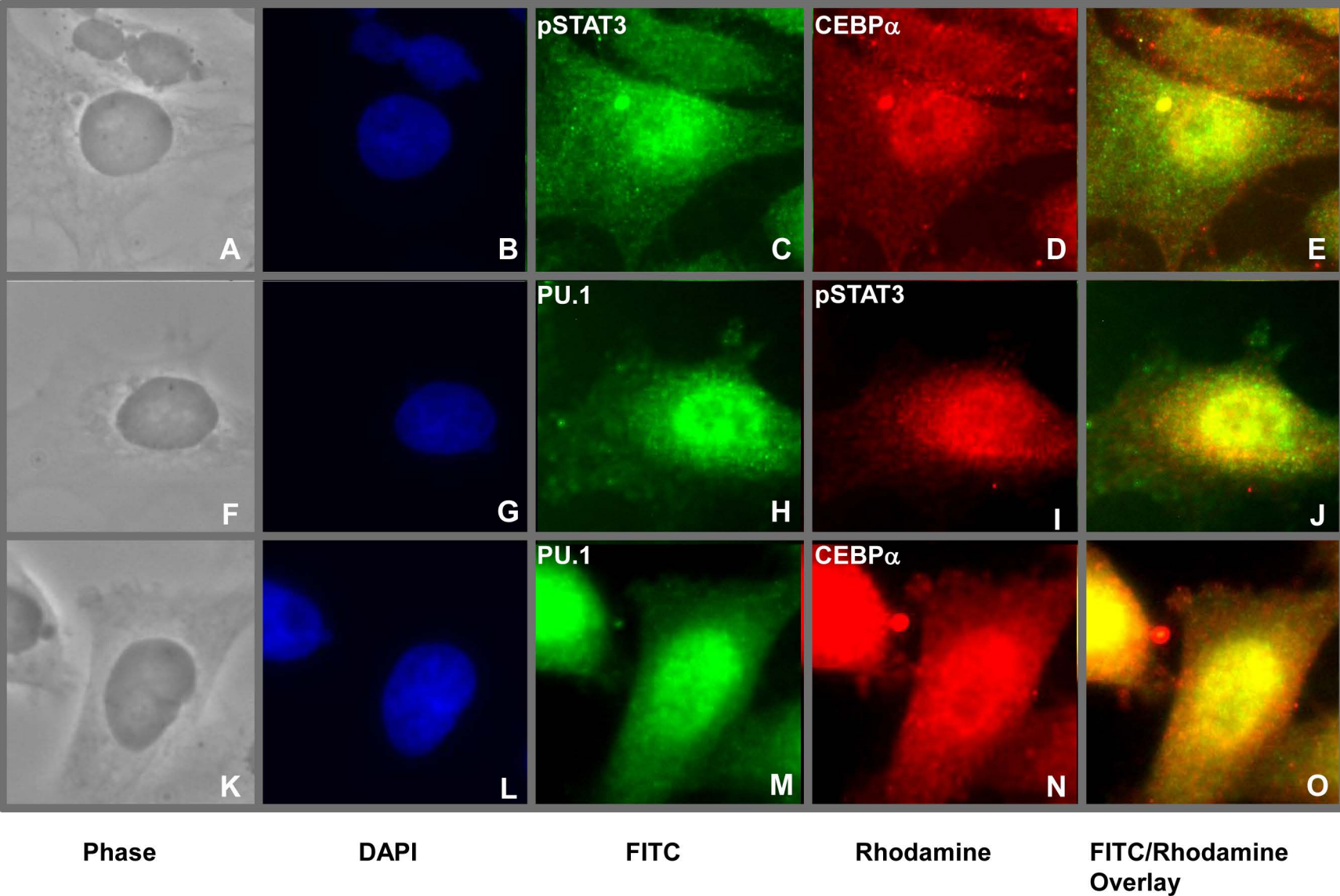


Figure S2. Nuclear co-localization of CEBP α , PU.1 and STAT3. HEPG2 cells were treated with IL6 and co-immunostained with anti-STAT3/anti-CEBP α (upper panels), anti-PU.1/anti-STAT3 (middle panels) or anti PU.1/anti-CEBP α (lower panels). A, F, K represent phase images; B, G, L show nuclear staining by DAPI; C, H, M represent FITC (green); D, I, N represent Rhodamine (red); E, J, O represent overlay between green and red (yellow).

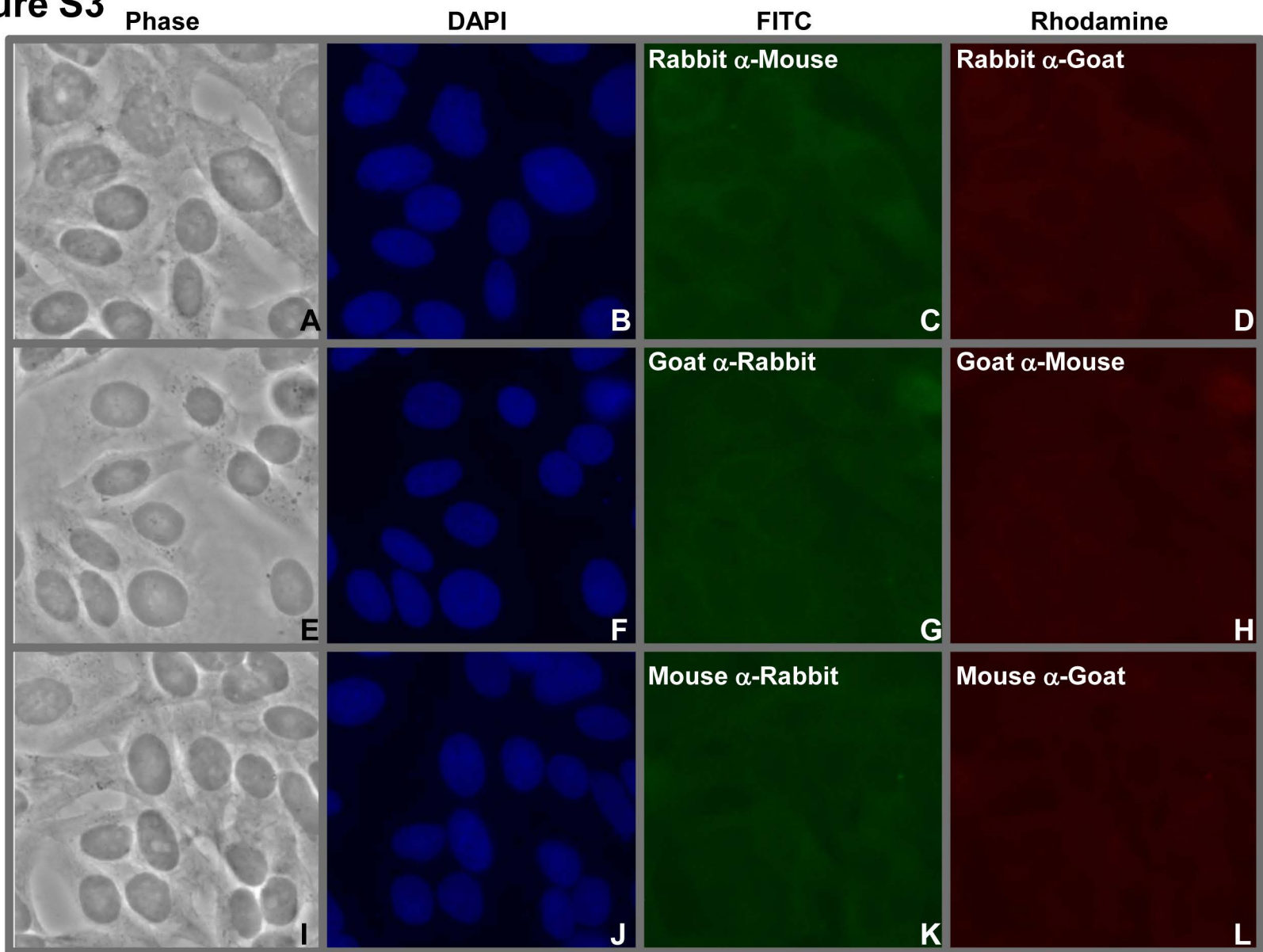
Figure S3

Figure S3. Negative control immunostaining: HEPG2 cells were co-immunostained with fluorescence conjugated secondary antibodies (C-L). A, E, I represent phase images; B,F,J show nuclear staining by DAPI; C,G,K represent FITC (green); D,H,L represent Rhodamine (red).

Table S1: Patient Demographics

Demographic		HCV	AH	NASH	Control
Number (n)		10	10	10	10
Gender M:F		3:7	4:6	5:5	6:4
Age (mean, SD)		53 ± 6	46 ± 8	49 ± 10	40 ± 7
Recipient Race (n)	Caucasian	60%	50%	70%	40%
	African American	40%	50%	30%	60%
Bilirubin (mg/dL)		2.1 ± 0.5	1.8 ± 0.5	1.4 ± 0.8	1.1 ± 0.4
ALT (IU/ml)		61 ± 24	136 ± 54	71 ± 41	25 ± 9
AST (IU/ml)		105 ± 42	96 ± 34	82 ± 25	27 ± 8
ALT (IU/ml)		61 ± 24	136 ± 54	71 ± 41	25 ± 9
HCV Viral load (X10 ⁶ /mL)		2.1 ± 0.5	n/a	n/a	n/a
HCV genotype	1	6	n/a	n/a	n/a
	%	19.3%	n/a	n/a	n/a
	1a	3	n/a	n/a	n/a
	%	30.1.3%	n/a	n/a	n/a
	1b	1	n/a	n/a	n/a
	%	21.5%	n/a	n/a	n/a

SD: Standard Deviation, HCV: Hepatitis C Virus, AH: Alcoholic Hepatitis, NASH: Non-Alcoholic Steatohepatitis, M: Male, F: Female, AST: Aspartate Amino Transferase, ALT: Alanine Amino Transferase