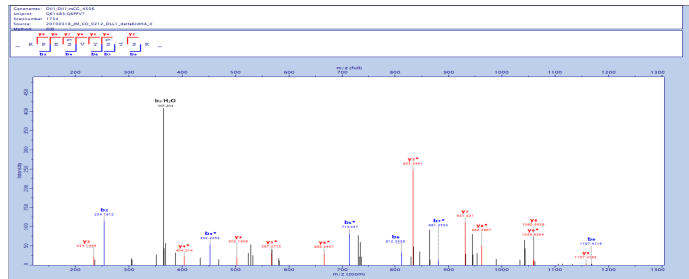


Position	Peptide IDs	Mod. Peptide IDs	Best Localization	Best Localization	Proteins	Protein	Protein Descriptive Uniprot	Localization Prob.	Number of Phosph.	Amino Acid	Sequence Window	Moifs	Best Motif	PEP	Masscot Score	Modified Sequen	Phospho (STY) P	Position in peptide	Charge	m/z	Mass Error (ppm)	Intensity
638	1299:1352	1310:1397	1783	2103	C61483	C61483	>C61483 atDL1 MCLUSE Delta	1	1	T	FKVRYPTVDYK	CAMK2	CAMK2	1.08E-08	34.1	YFTRHVDYNA	YFTI11VDYHLVR	3	2	660.30521	1.3071	15747000
693	177	197	290	300	IP00121340:IPD	IP00121340	Delta-like protein	0.999537	2	S	DKRRFESVYSTI	CAMK2-PKA-PKA	PKA-AKT	0.000514298	24.43	RFESLHLYSLS	RPESSIVYSSG	4	7	657.20226	-0.05347	68731
696	177	197	290	300	IP00121340:IPD	IP00121340	Delta-like protein	0.9227	2	S	RRESVYSTKDT	CK1	CK1	0.000514298	24.43	RRESLHLYSLS	RPESSIVYSSG	4	7	657.20226	-0.05347	68731



RPEVYSTK
 User AA Formula 1: C2 H3 N1 O1
 Elemental Composition: C49 H83 N14 O24 P2
 MH+ (avi) MH+ (monol)
 1314.2323 1313.5174
 [-] Main Sequence Ions

b	y
---	1 R
---	2 P
---	3 E
---	4 S
---	5 V
---	6 Y
---	7 T
---	8 S
---	9 K
---	10

[-] All Sequence Ions

MH	Low Mass	70.0651	70.0651	102.055	--- <th>72.0808</th> <th>136.0757</th> <th>--- <th>74.06</th> <th>60.0444</th> <th>84.0808</th> </th>	72.0808	136.0757	--- <th>74.06</th> <th>60.0444</th> <th>84.0808</th>	74.06	60.0444	84.0808
---	---	87.0917	126.055	---	---	---	---	---	---	---	101.1073
---	---	100.0869	---	---	---	---	---	---	---	---	129.1022
---	---	112.0899	---	---	---	---	---	---	---	---	126.0913

N-terminal

a	b	b+H2O
---	---	---
---	---	---
---	---	---

C-terminal

y

[-] Theoretical Peak Table

60.0444 S	102.055 E	254.1612 b2	665.2542 v5	1080.3799 b8
70.0651 R	112.0899 R	335.1925 v3	764.3226 v6	1098.3904 b8+H2O
70.0651 P	126.055 P	385.2088 a3	784.3389 a6	1139.417 a9
72.0808 V	126.0913 K	383.2037 b3	812.3338 b6	1157.4163 v9
74.06 T	126.1022 K	502.1909 v4	951.3373 a7	1167.4119 b6
84.0808 K	126.0757 Y	822.2072 a4	951.3373 a7	1185.4225 b8+H2O
87.0917 R	147.1128 Y1	850.2021 b4	979.3322 b7	1313.5174 MH
100.0869 R	226.1662 a2	621.2756 a5	1052.385 a8	---
101.1073 K	234.1448 v2	649.2705 b5	1060.3636 v6	---

MS-Product in ProteinProspector 5.10.6 Basic

all Ions

RPEVYSTK
 User AA Formula 1: C2 H3 N1 O1
 Elemental Composition: C49 H83 N14 O24 P2
 MH+ (avi) MH+ (monol)
 1314.2323 1313.5174
 [-] Main Sequence Ions

b	y
---	1 R
---	2 P
---	3 E
---	4 S
---	5 V
---	6 Y
---	7 T
---	8 S
---	9 K
---	10

[-] All Sequence Ions

MH	MH+H2O	MH-NH3	Low Mass	70.0651	70.0651	102.055	--- <th>72.0808</th> <th>136.0757</th> <th>--- <th>74.06</th> <th>60.0444</th> <th>84.0808</th> </th>	72.0808	136.0757	--- <th>74.06</th> <th>60.0444</th> <th>84.0808</th>	74.06	60.0444	84.0808
---	---	---	---	87.0917	126.055	---	---	---	---	---	---	---	101.1073
---	---	---	---	100.0869	---	---	---	---	---	---	---	---	129.1022
---	---	---	---	112.0899	---	---	---	---	---	---	---	---	126.0913

N-terminal

a-NH3	b-NH3	b+H2O
---	---	---
---	---	---
---	---	---

C-terminal

y-NH3	y+H2O
---	---
---	---
---	---
---	---
---	---
---	---
---	---
---	---
---	---
---	---
---	---

[-] Theoretical Peak Table

60.0444 S	208.1397 a2-NH3	502.1909 v4	767.3124 a8-NH3	1060.3636 v8
70.0651 R	216.1343 b2+H2O <td>505.1809 a4-NH3</td> <td>784.3389 a6</td> <td>1062.3698 b8+H2O</td>	505.1809 a4-NH3	784.3389 a6	1062.3698 b8+H2O
70.0651 P	217.1183 v2-NH3	522.2072 a7	794.3233 b8+H2O	1063.3533 b8-NH3
72.0808 V	226.1662 a2	532.1915 b4+H2O	795.3073 b6-NH3	1080.3799 b8
74.06 T	234.1448 v2	533.1756 b4-NH3	812.3338 b6	1098.3904 b8+H2O
84.0808 K	237.1346 b2-NH3	550.2021 b4	913.3104 v7+H2O	1122.3904 a8-NH3
87.0917 R	254.1612 b2	604.2491 a8-NH3	914.2944 v7-NH3	1139.4059 v9+H2O
100.0869 R	317.1819 v3+H2O	621.2756 a5	931.321 v7	1139.417 a9
101.1073 K	318.166 v3-NH3	631.26 b5+H2O	934.3107 a7-NH3	1140.3896 v9-NH3
102.055 E	335.1925 v3	632.244 b5-NH3	951.3373 a7	1149.4013 b9+H2O
112.0899 R	338.1823 a3-NH3	647.2436 v5+H2O	961.3216 b7+H2O	1150.3854 b9-NH3
126.055 P	355.2088 a3	648.2276 v5-NH3	962.3057 b7-NH3	1167.4119 b9
126.0913 K	365.1932 b3+H2O	649.2705 b5	979.3322 b7	1167.4119 b9
126.1022 K	366.1772 b3-NH3	660.2542 v5	1035.3584 a8-NH3	1185.4225 b9+H2O
130.0863 Y1-NH3	383.2037 b3	746.312 v8+H2O	1042.353 v8+H2O	1298.5069 MH+H2O
130.0777 Y	484.1803 v4+H2O	747.2961 v8-NH3	1043.337 v8-NH3	1296.4909 MH-NH3
147.1128 Y1	485.1643 v4-NH3	764.3226 v6	1052.365 a8	1313.5174 MH

MS-Product in ProteinProspector 5.10.6 Basic

© Cowart 1996-2012 The Regents of the University of California.