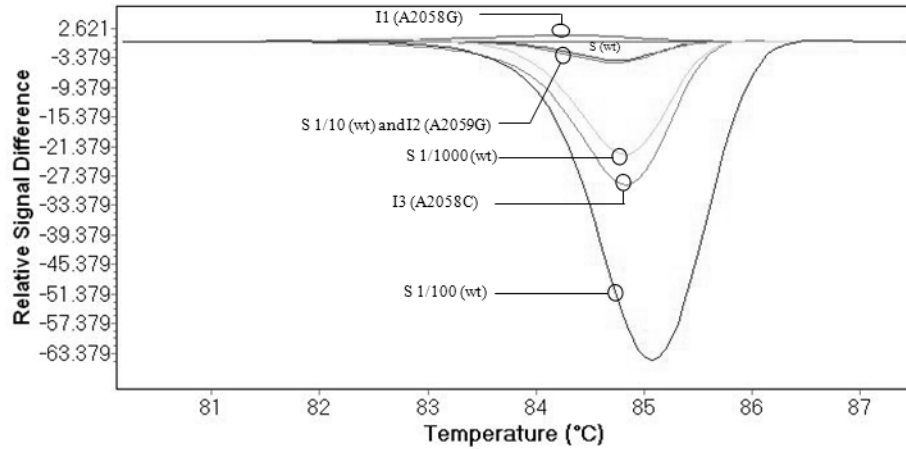


(a)



(b)

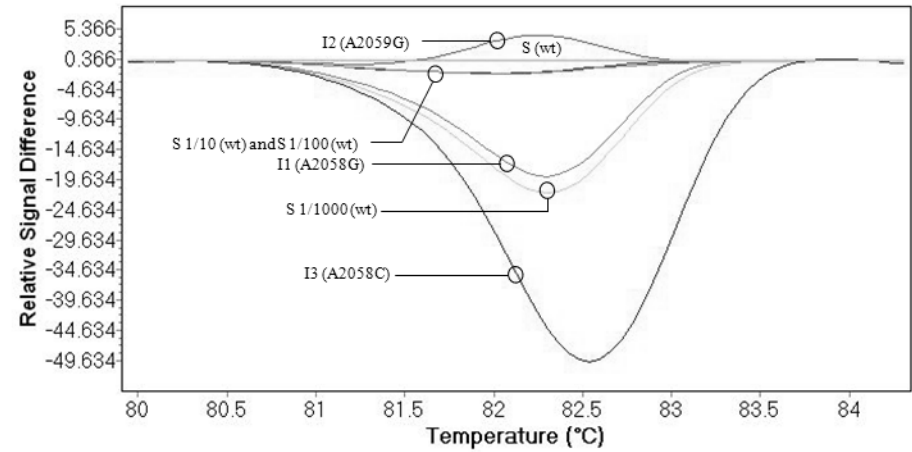


FIG. S1. Normalized and temperature-shifted difference plots obtained with the real-time high-resolution melt assay using two enzyme mixes for three characterized macrolide-resistant isolates and different DNA dilutions of the wild-type *M. genitalium* G37 strain (pure, 1/10, 1/100, and 1/1000). The curve of the wild-type *M. genitalium* G37 strain was selected as a reference. (a) LightCycler® 480 High Resolution Melting Master Mix (Roche); (b) MeltDoctor™ HRM Master Mix (Applied Biosystems). S: G37 strain (wild-type); I1: resistant isolate (A2058G); I2: resistant isolate (A2059G); I3: resistant isolate (A2058C)