

Supporting Information

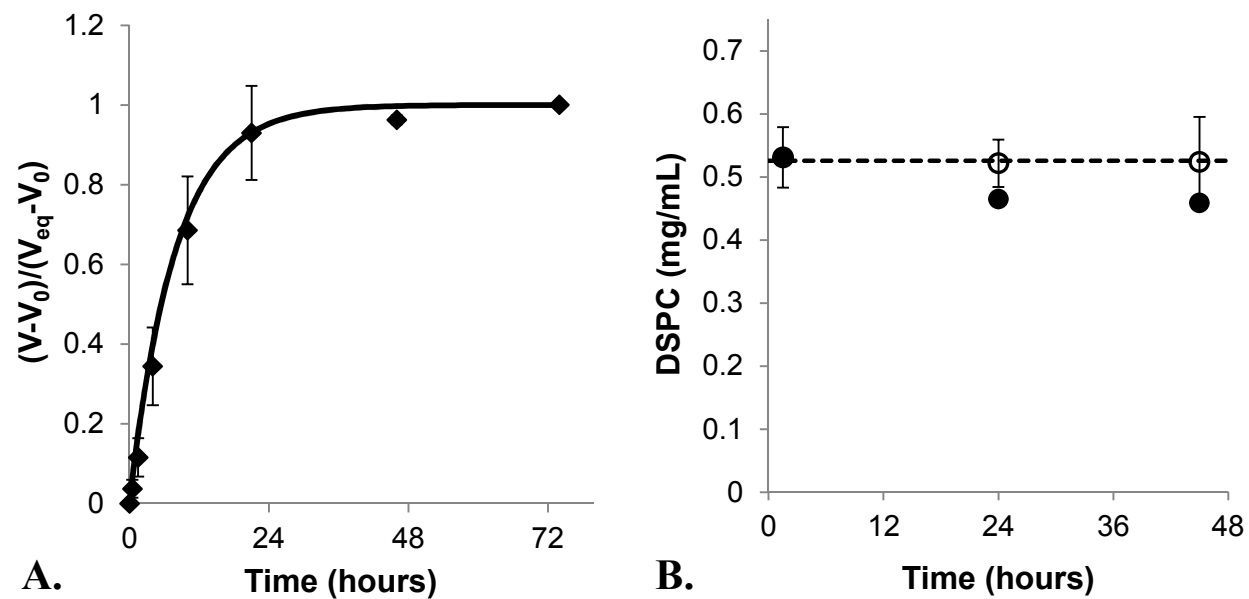


Figure S1. The rate of dialysis tube swelling was monitored and used to determine a swelling rate constant for the dialysis tubes used in dynamic dialysis studies (A). Using this swelling rate and accounting for the volume of sample removed over time, the loss in lipid observed over time in dynamic dialysis studies (●) could be accounted for (○) (B).