

Figure S1

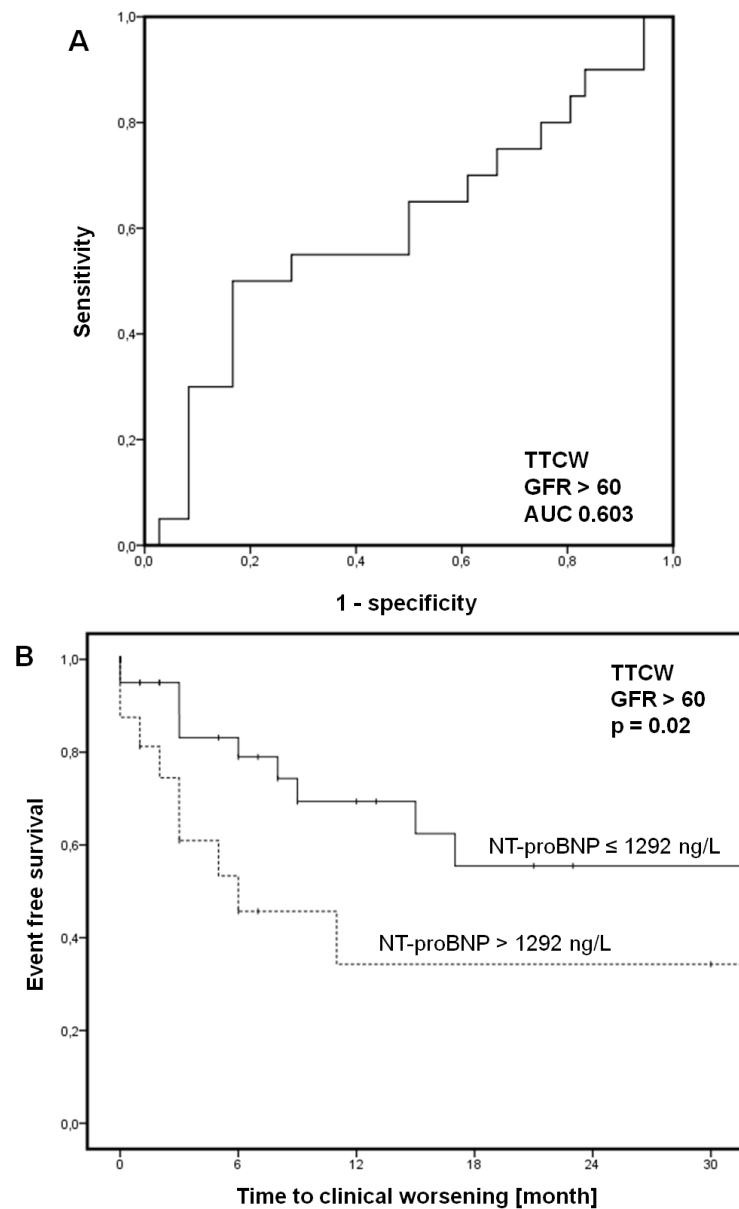


Figure S1 Time to clinical worsening (TTCW): Receiver operating characteristic (ROC) analysis to determine the cut-off value in patients with preserved renal function (defined as glomerular filtration rate (GFR) > 60 ml/min/1.73 m²; **A**). In Kaplan-Meier analysis, higher levels of n-terminal pro-brain natriuretic peptide (NT-proBNP) were significantly associated with early clinical worsening (**B**).