

Figure S3

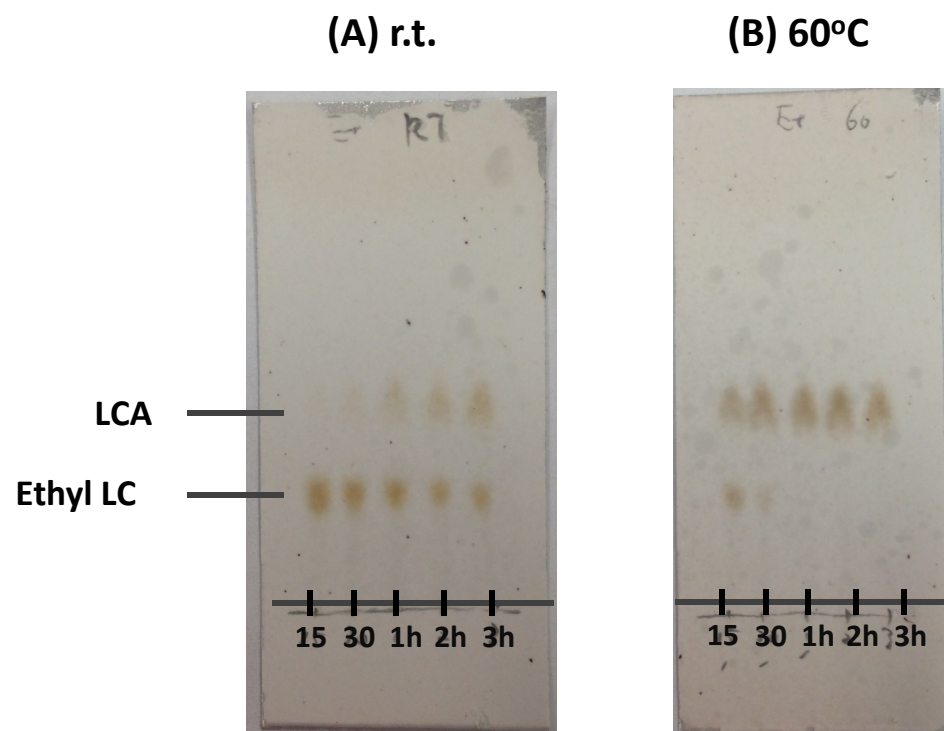


Figure S3, Time-course experiment for the hydrolysis of ethyl lithocholate; Ethyl lithocholate (Ca. 0.5mg) was dissolved in 500 μ L of 0.1N NaOH (in 50% isopropanol), and the mixture was stand either or (A) at room temperature or (B) at 60°C . Aliquot (~1 μ L) of each reaction mixture was loaded on the C18 TLC plate at the time point of 15min, 30min, 1h, 2h, and 3h. TLC plate was developed with 95%methanol containing 0.5%AcOH. The spots were visualized by 50% H₂SO₄ followed by heating at 120°C.