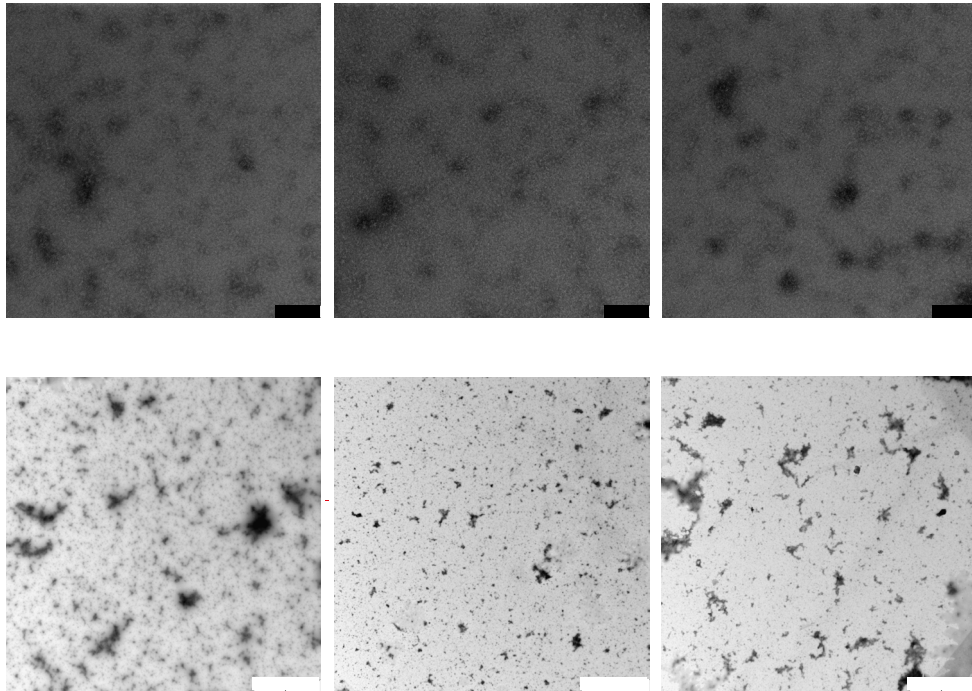


A



B

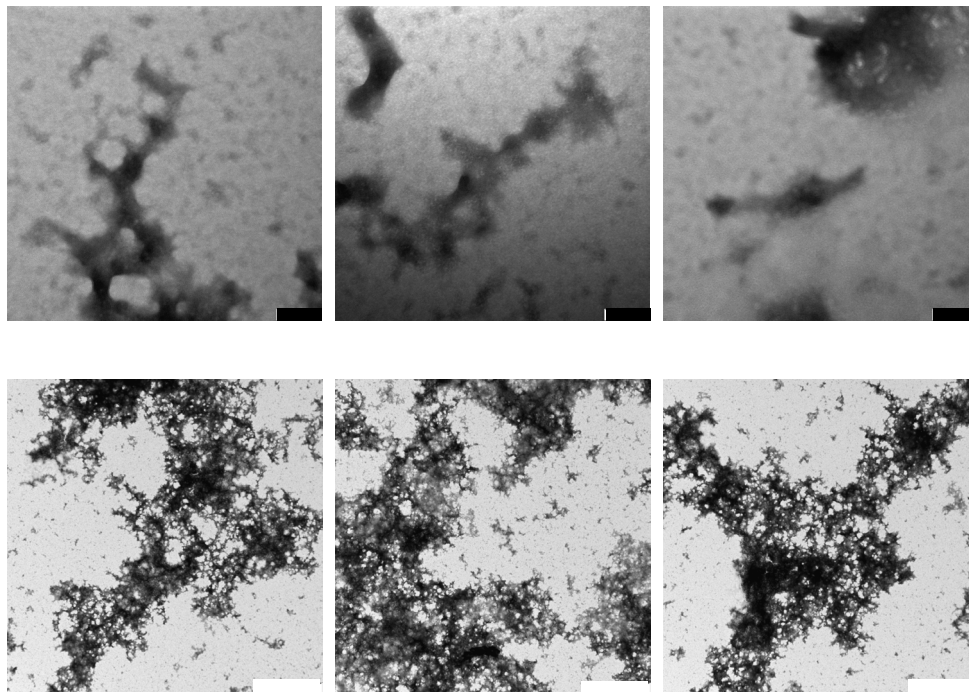


Figure S1. Transmission electron microscopy (TEM) images of WT and IOWA apoA-I. WT (A) and IOWA (B) apoA-I proteins at a protein concentration of 0.2 mg/ml were incubated at 37 C for 28 days followed by TEM analyses. Size bars are 100 nm (black bars) or 2 μm (white bars).