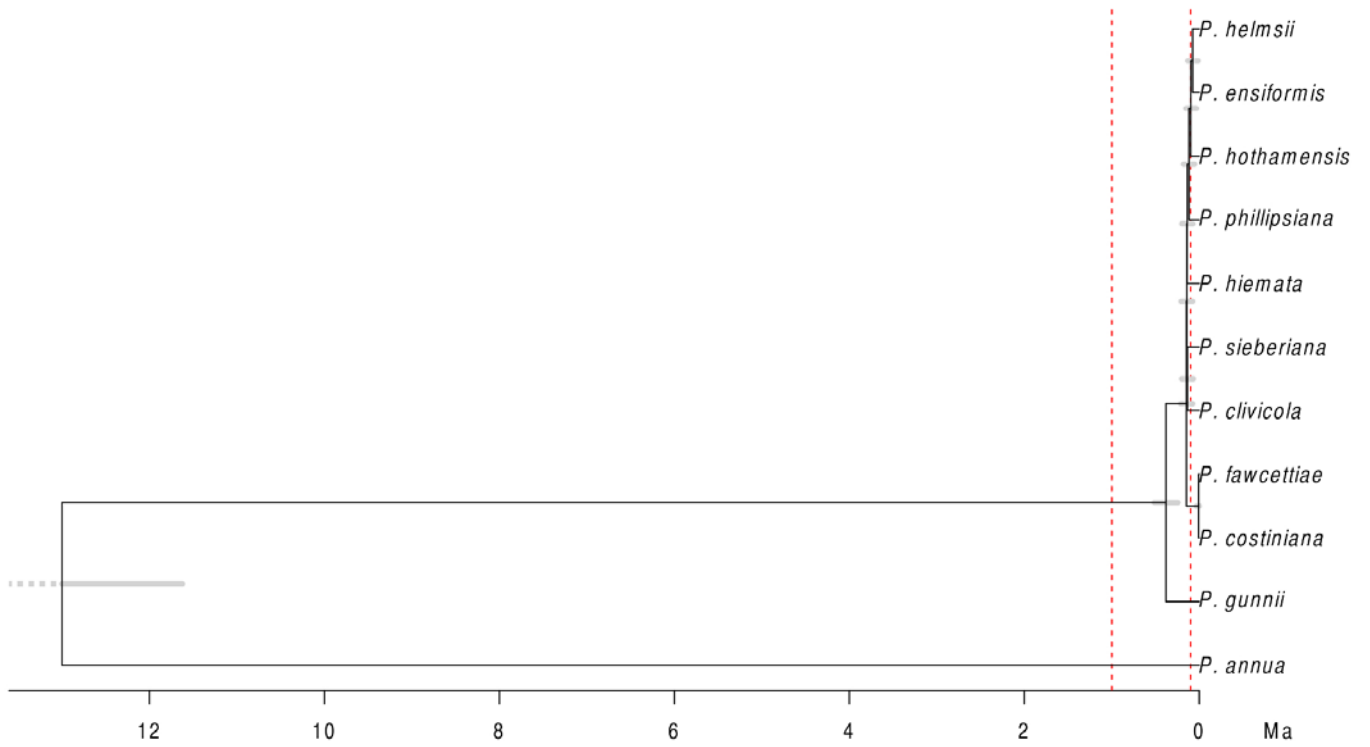


SUPPLEMENTARY DATA

Fig. S1: Species tree from 20 BPP runs including 95% HPD node date intervals (millions of years).



Figs S2–S9. Maximum clade credibility trees for each of the gene trees co-estimated with the species tree in *BEAST. Node support shown with black ($0.8 \leq pp < 0.95$), blue ($0.95 \leq pp < 0.99$) or red ($pp \geq 0.99$) dots. Unlabelled nodes had $pp < 0.8$. Scale shows mutations per site. Samples from the Australian Capital Territory (ACT) are shown with the same symbols as New South Wales (NSW).

Fig. S2. The chloroplast tree, using the linked chloroplast regions *rpl32-trnL* and *rpoB-trnC*.

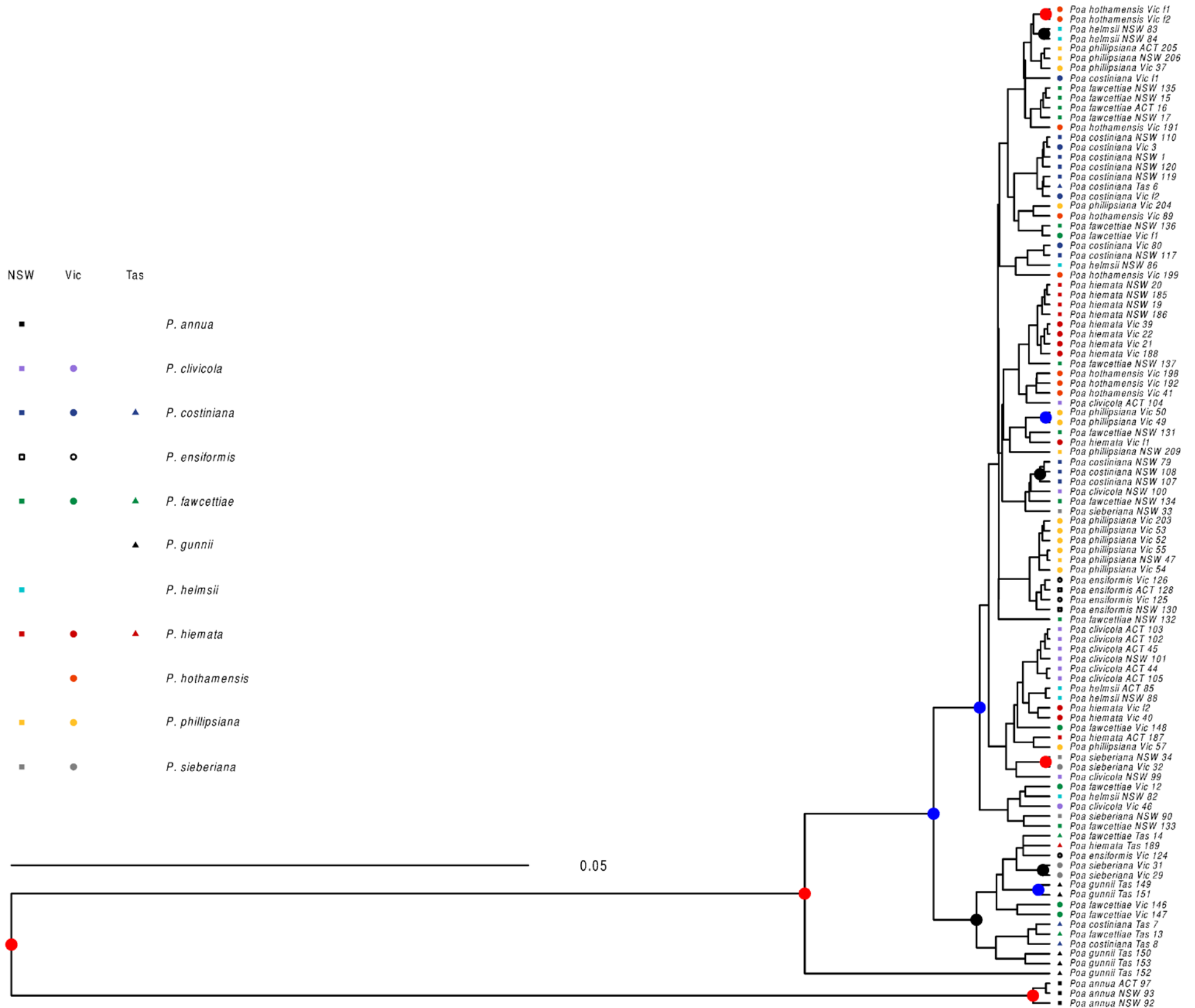


Fig. S3. CDO504 Copy A.

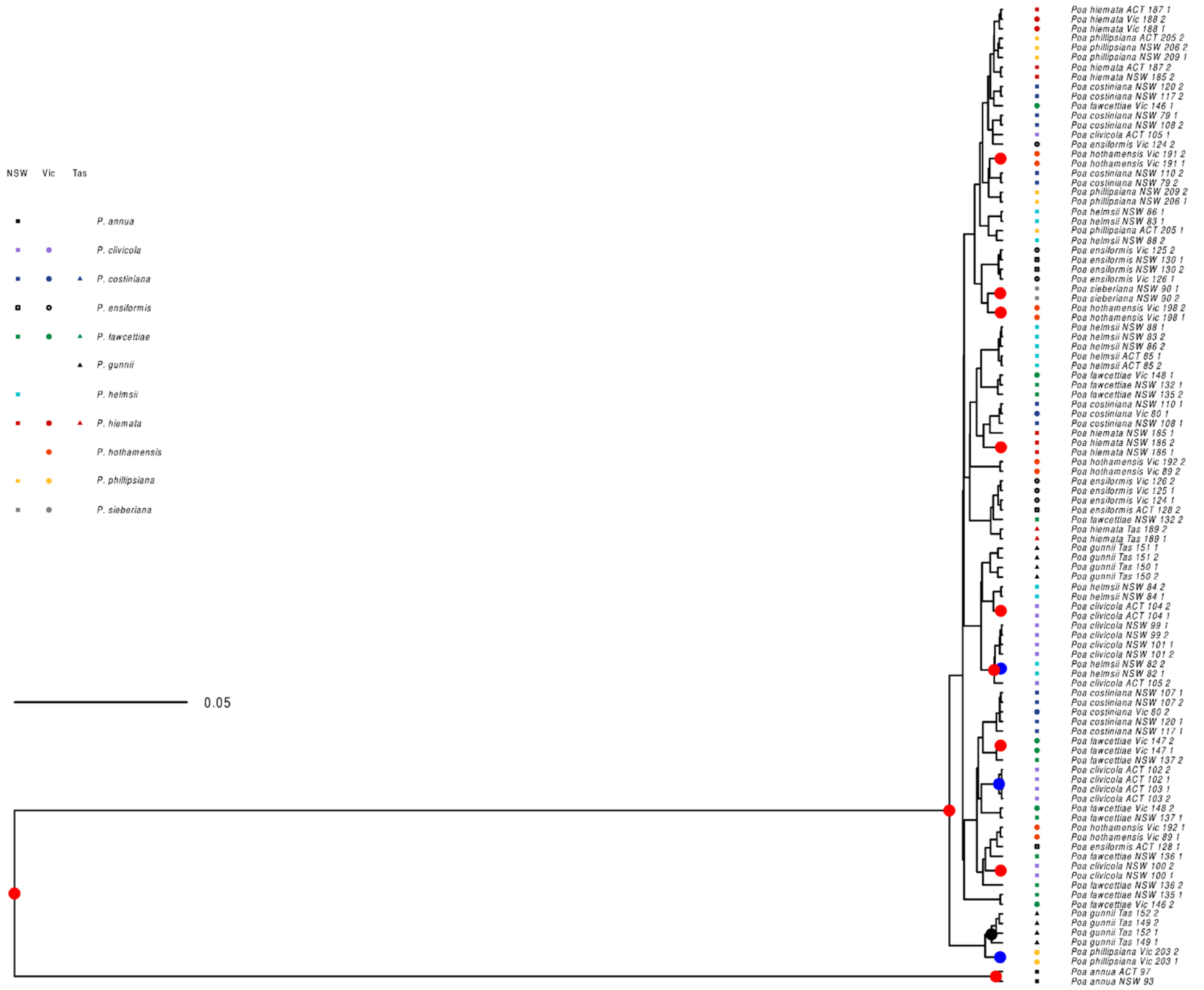


Fig. S4. CDO504 Copy B.

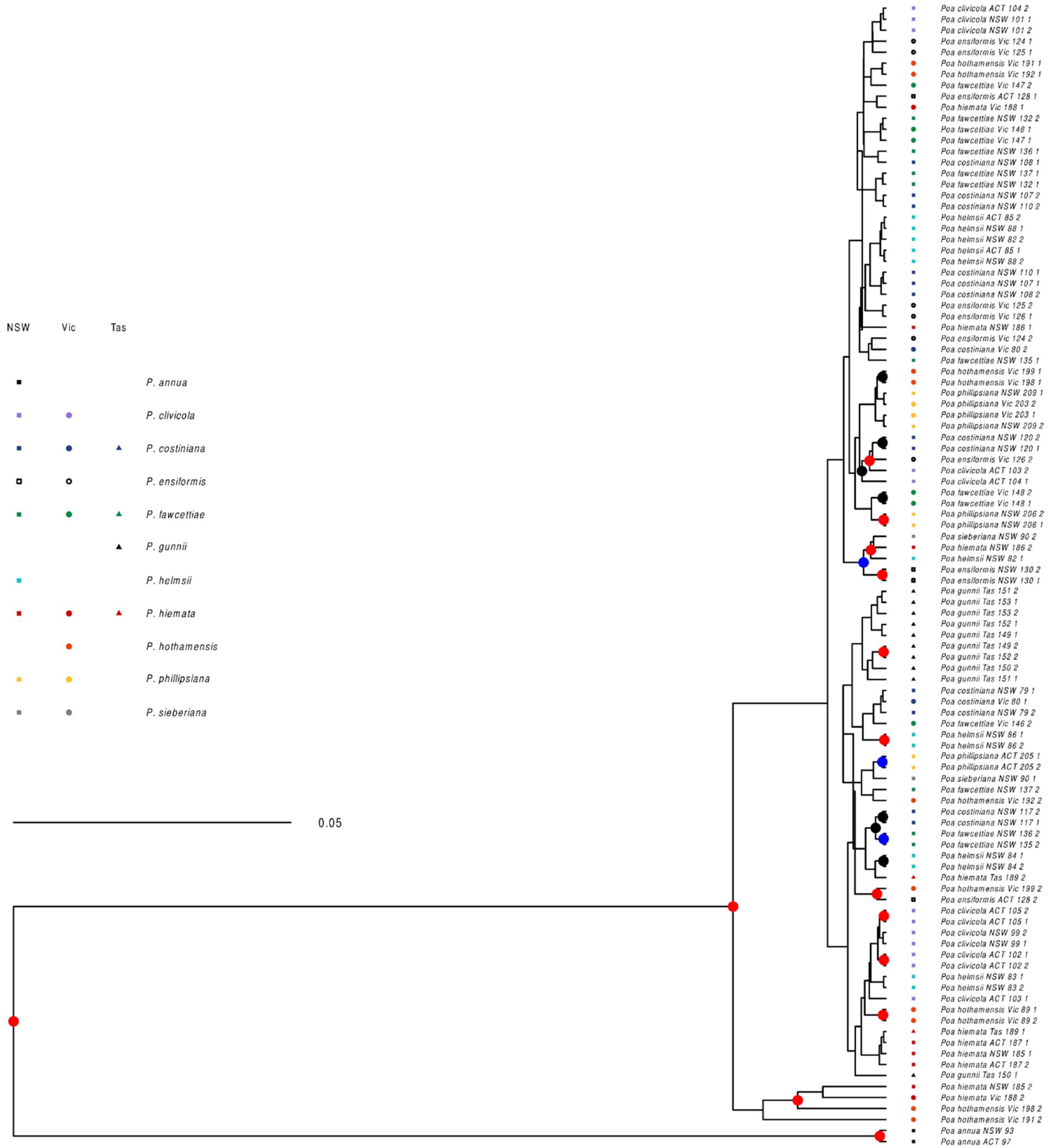


Fig. S5. DMC1 Copy A.

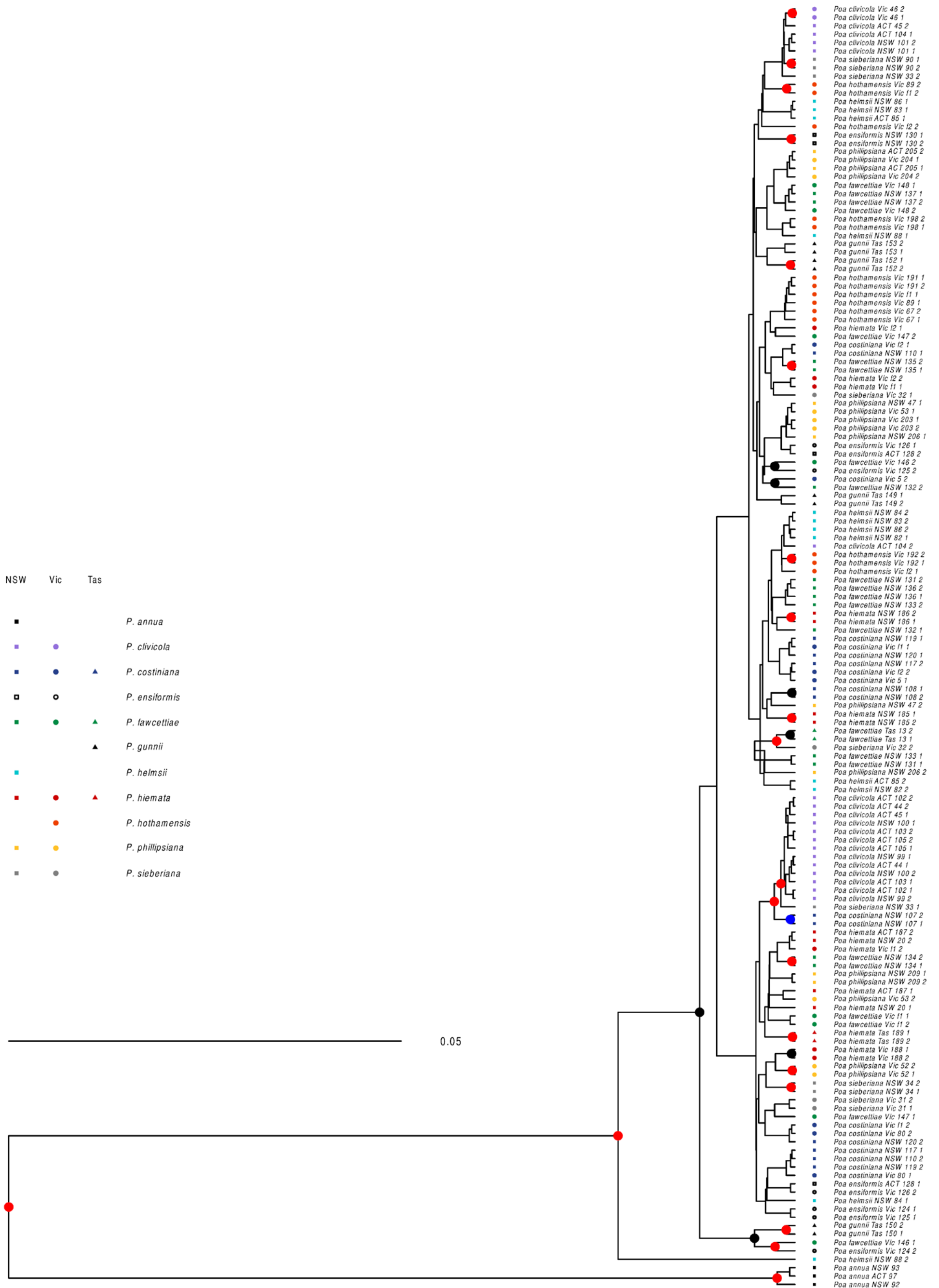


Fig. S6. *DMC1* Copy B.

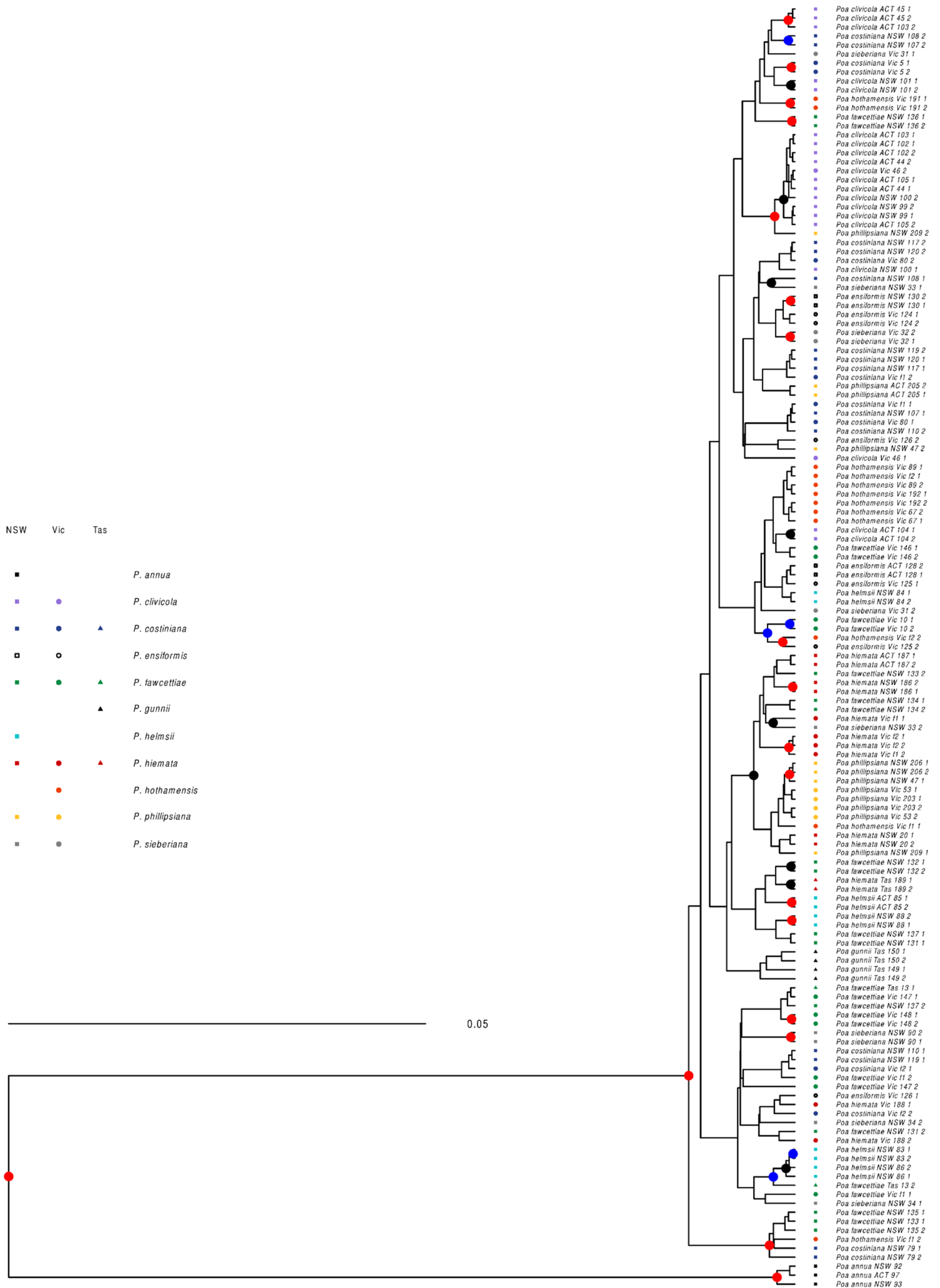


Fig. S7. *trx* Copy A.

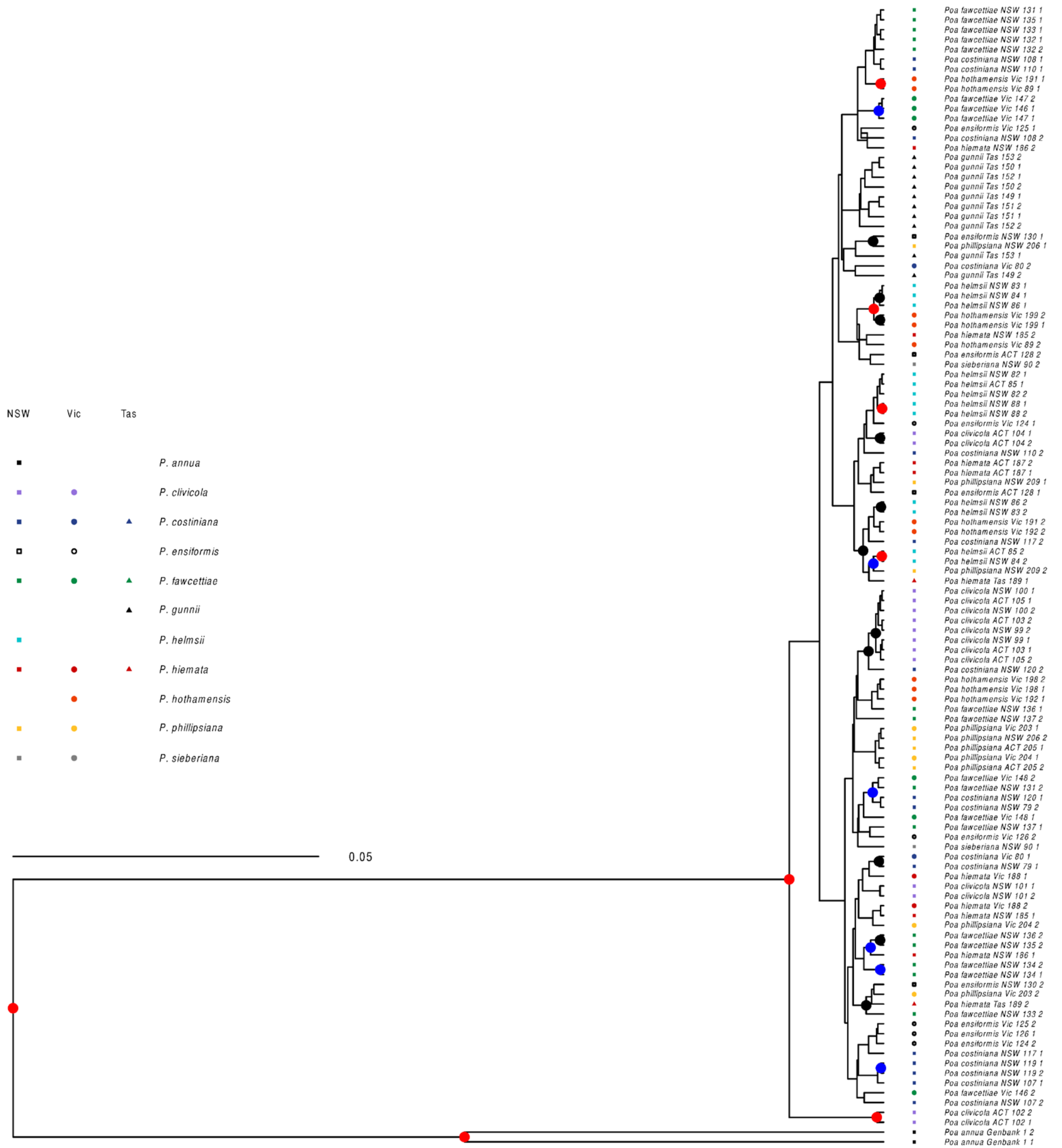


Fig. S8. *waxy* Copy A.

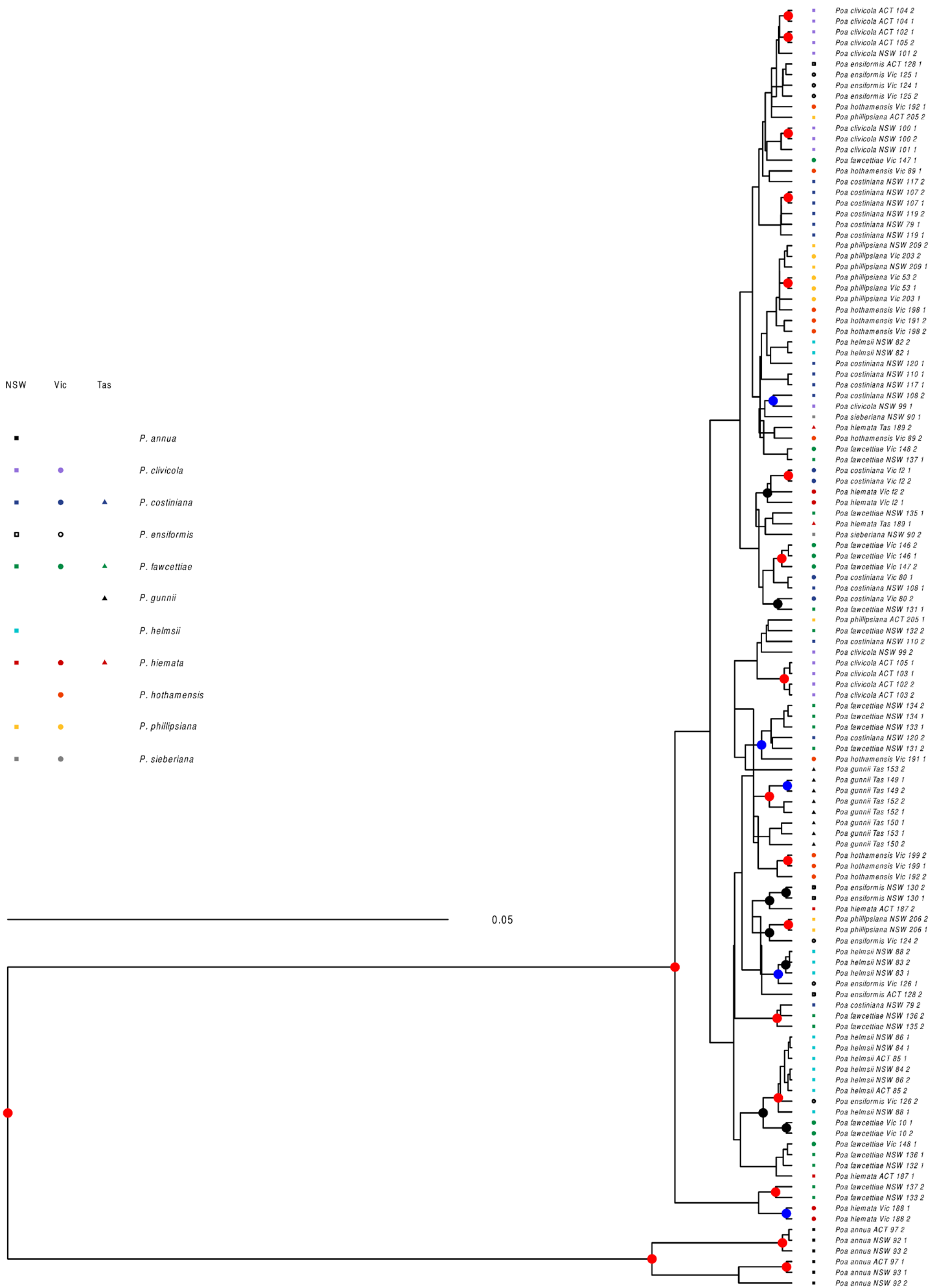


Fig. S9. *waxy* Copy B.

