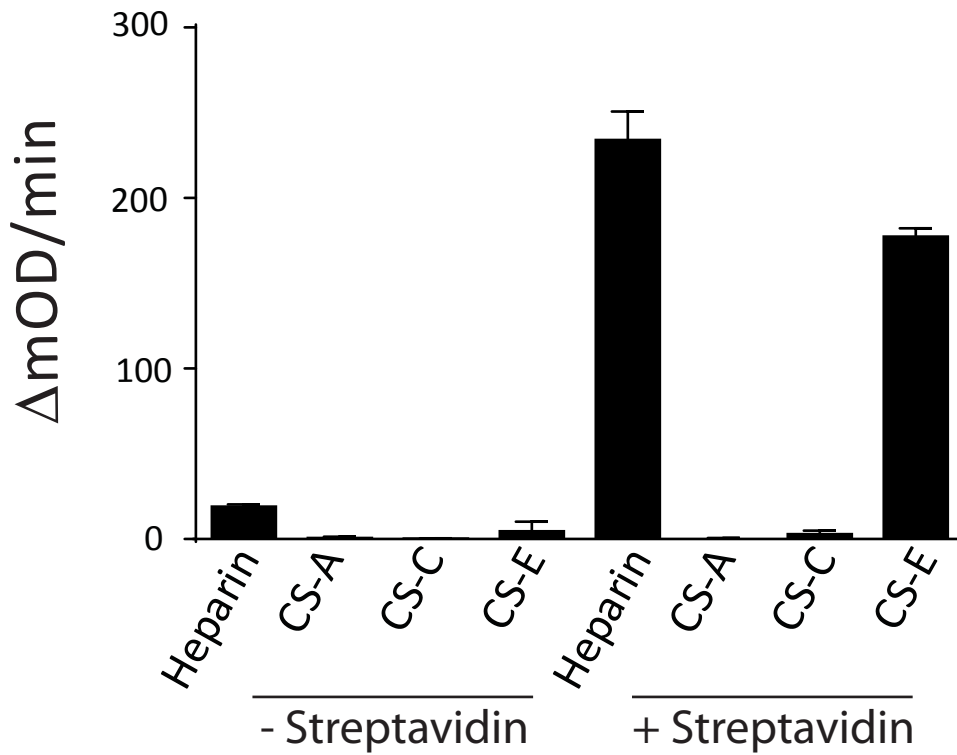


Supp. Fig. 1. SDS/PAGE separation of RPTP σ -AP purified from conditioned media using IMAC. Lane 1: RPTP σ -AP-His; Lane 2: RPTP- Δ Lys-AP-His, Lane 3: AP-His



Supplementary Fig. 2. PTPσ-AP bound to heparin and CS-E, but not to CS-A and CS-C. Biotinylated GAGs were immobilized to 96-well plates and incubated with PTPσ-AP, followed by the measurement of bound AP activity. While PTPσ-AP did not bind to mono-sulfated CS GAGs (CS-A and CS-C), it did bind to more heavily sulfated CS-E and heparin.