

Figure S1

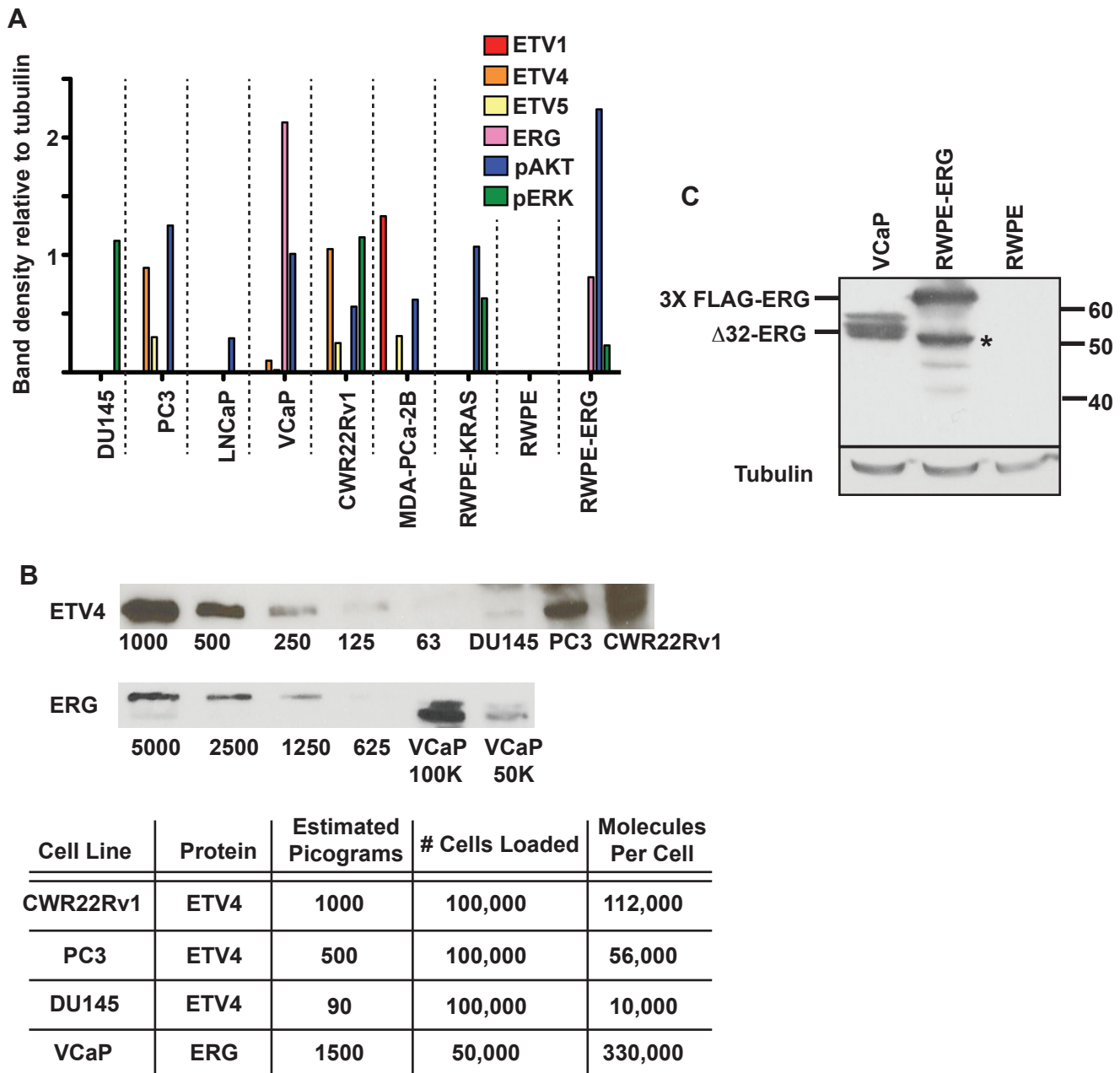


Figure S1. (A) The density of bands shown in Figure 1B were measured using Image J and are plotted relative to the tubulin levels in the same sample. Note that measurements of bands from the same antibody are comparable within the same blot, but not between blots. Columns 1-6 comprise one blot and 7-9 a second blot. (B) Protein levels of ETV4 and ERG were assayed by immunoblots using the indicated antibody. Comparisons were made between samples containing the indicated number of picograms of purified protein or cell extract from 100,000 cells of the indicated cell type (except 50,000 VCAP cells where indicated). The calculation for approximate number of molecules per cell is shown below. (C) An immunoblot with anti-ERG antibody shows the relative level of truncated ($\Delta 32$) ERG expressed from the TMPRSS2/ERG fusion gene in VCaP cells compared to recombinant 3xFLAG full length ERG in RWPE-ERG cells. The asterisk indicates an ERG degradation product. A tubulin loading control for each extract is shown below.