

SUPPLEMENTARY MATERIAL

Calzolari, Terriente and Pujades, EMBOJ-2013-86003

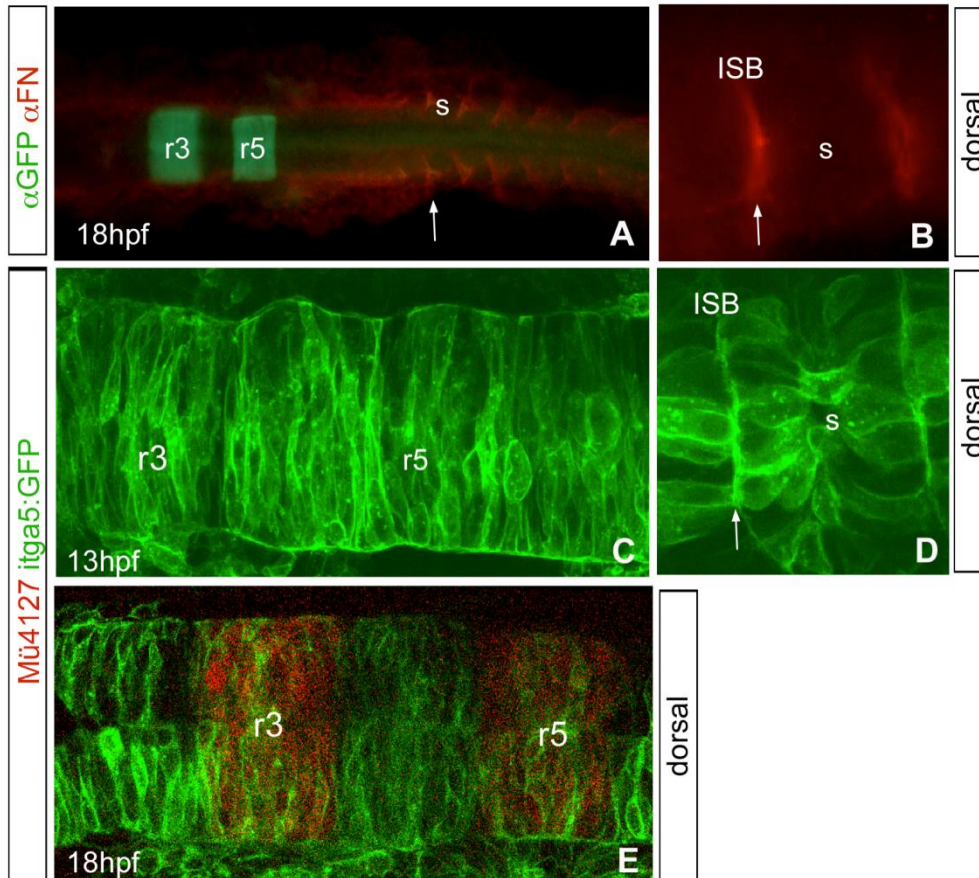


Figure S6: Fibronectin matrix deposition does not contribute to interhombomeric fences. (A-B) Dorsal views of Tg[eIA:GFP] embryos immunostained with anti-FN. Note that there is not enrichment of FN in the hindbrain (A) although there is a clear FN-deposition in the intersomatic boundaries (ISB) (B). (C-E) Mü4127 embryos injected with itga5:GFP mRNA in order to visualize the clustering –and therefore the activation– of $\alpha 5$ integrins in the hindbrain boundaries. Note that as FN, no enrichment of itga5 was found in the hindbrain (C,E) although it can be clearly observed in the ISB (D). Dorsal views with anterior to the left.