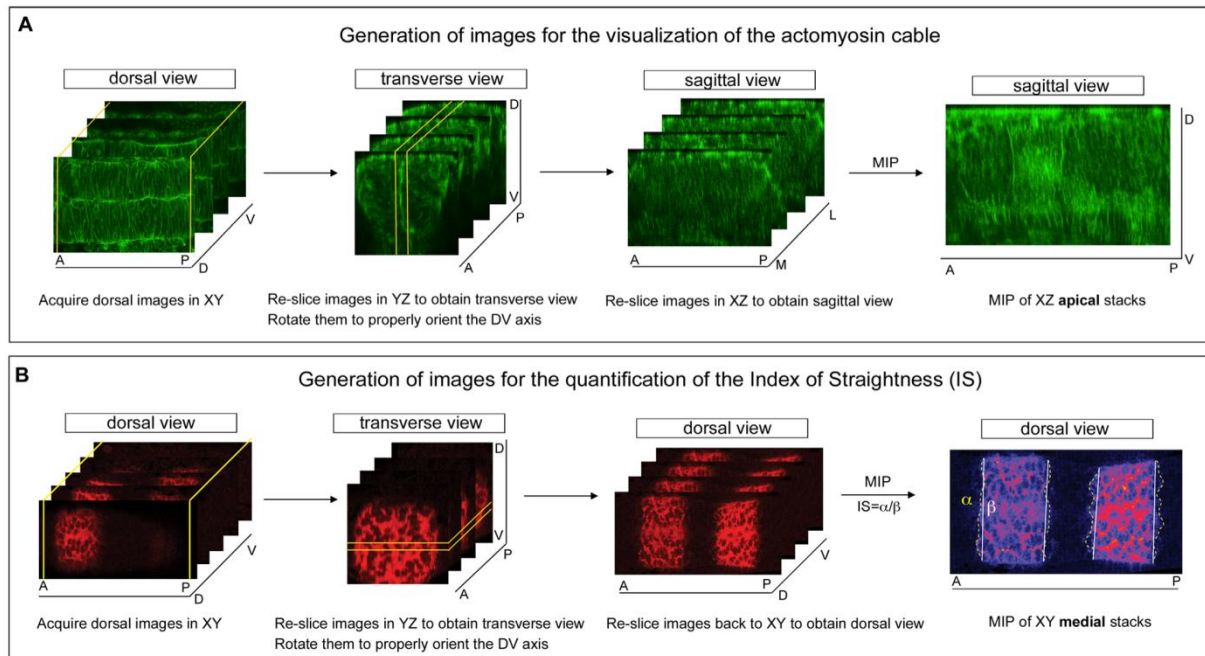


## SUPPLEMENTARY MATERIAL

Calzolari, Terriente and Pujades, EMBOJ-2013-86003



**Figure S7:** Scheme depicting the processing of the samples to obtain: (A) sagittal-like optical sections to observe actomyosin-cables in the apical side of the cells; and (B) dorsal view images to calculate the Index of Straightness (IS). (A) Embryos were mounted and dorsal images in XY were acquired in the confocal microscope. Using ImageJ/FIJI, all dorsal images were re-sliced in YZ and rotated if needed to have a perfect DV orientation. Afterwards, all images were re-sliced in XZ to obtain sagittal views and the apical XZ stacks were selected for MIP. (B) Embryos were mounted and dorsal images in XY were acquired in the confocal microscope. Using ImageJ/FIJI, all dorsal images were re-sliced in YZ and rotated if needed to have a perfect DV orientation. Then, images re-sliced back to XY and stacks from the medial part of the neural tube were selected for MIP.