

SUPPLEMENTARY ONLINE DATA

Parkin is activated by PINK1-dependent phosphorylation of ubiquitin at Ser⁶⁵

Agne KAZLAUSKAITE*¹, Chandana KONDAPALLI*, Robert GOURLAY*, David G. CAMPBELL*, Maria Stella RITORTO*, Kay HOFMANN†, Dario R. ALESSI*, Axel KNEBEL*, Matthias TROST* and Miratul M. K. MUQIT*‡¹

*MRC Protein Phosphorylation and Ubiquitylation Unit, University of Dundee, Dundee, Scotland, U.K.

†Institute for Genetics, University of Cologne, Cologne, Germany

‡College of Medicine, Dentistry & Nursing, University of Dundee, Dundee, Scotland, U.K.

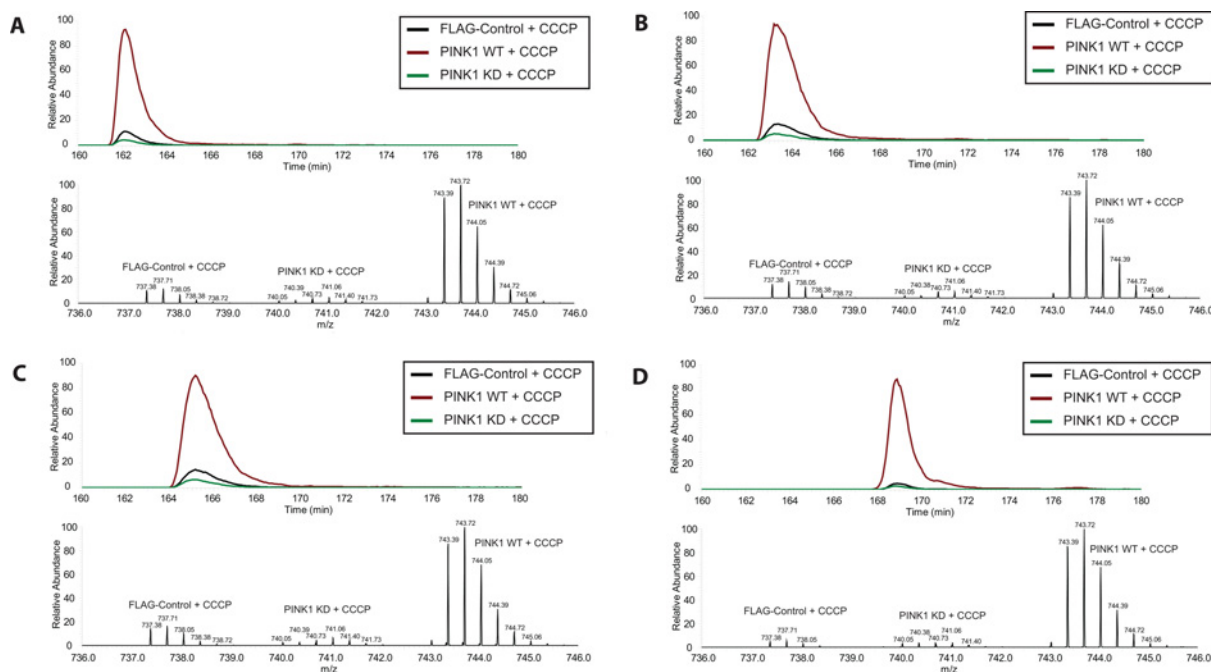


Figure S1 Reproducible phosphorylation of ubiquitin upon PINK1 stimulation by CCCP *in vivo*

Flp-In T-Rex HEK-293 cells stably expressing FLAG-empty, wild-type PINK1-FLAG or kinase-inactive PINK1-FLAG were grown in light, heavy and medium SILAC media respectively. Cells in each condition were stimulated with 10 μ M CCCP for 3 h. Subsequently, membrane fractions were enriched by ultracentrifugation and solubilized in 1% RapiGest. Lysates from each of the three conditions were mixed at 1:1:1 and digested with trypsin before phosphopeptide enrichment by HILIC and TiO₂, and analysis by MS. Data analysis was performed using MaxQuant. (A–D) Extracted ion chromatograms representing the ubiquitin Ser⁶⁵ phosphopeptide TLSDYNIQKpSTLHLVLR in the three SILAC-labelled conditions over all four biological replicates. There is a ~14-fold increase in abundance in cells transfected in the wild-type PINK1-FLAG compared with the kinase-inactive PINK1-FLAG.

¹ Correspondence may be addressed to either of these authors (a.kazlauskait@dundee.ac.uk or m.muqit@dundee.ac.uk).

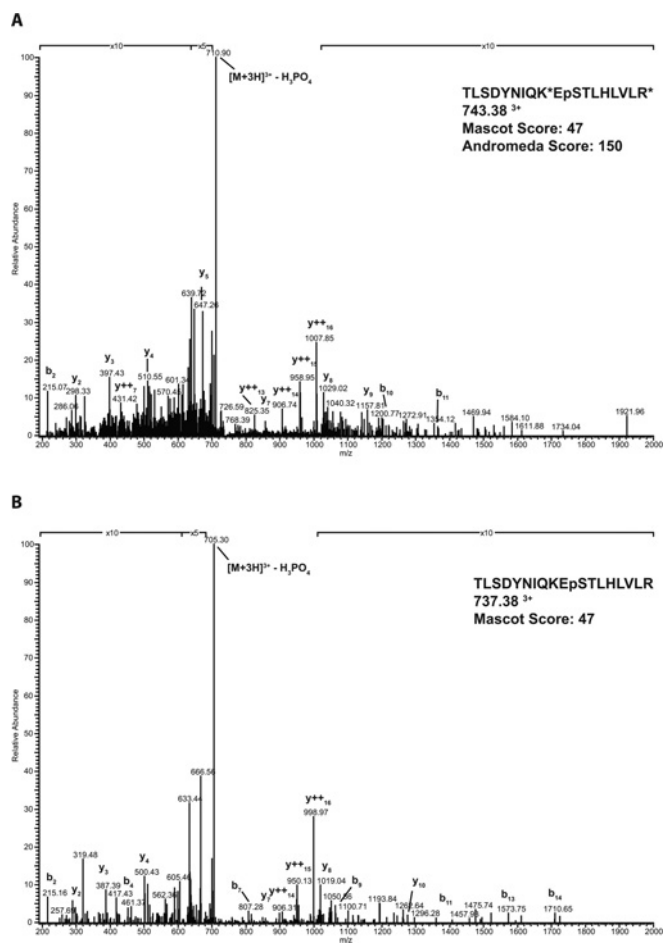


Figure S2 MS/MS fragmentation spectra of the phosphorylated ubiquitin peptide TLSDYNIQKEpSTLHLVLR

(A) MS/MS spectrum of the heavy (R10K)-labelled peptide TLSDYNIQKEpSTLHLVLR identified in wild-type PINK1-FLAG-transfected cells. (B) Virtually identical MS/MS spectrum of TLSDYNIQKEpSTLHLVLR from a digest of ubiquitin *in vitro* phosphorylated by TcPINK1. Note that the doubly charged ion [1105.5650]²⁺ of the same peptide was also positively identified in both experiments with Andromeda and Mascot Scores of 202 and 54 respectively.

Received 12 March 2014/24 March 2014; accepted 25 March 2014
Published as BJ Immediate Publication 25 March 2014, doi:10.1042/BJ20140334