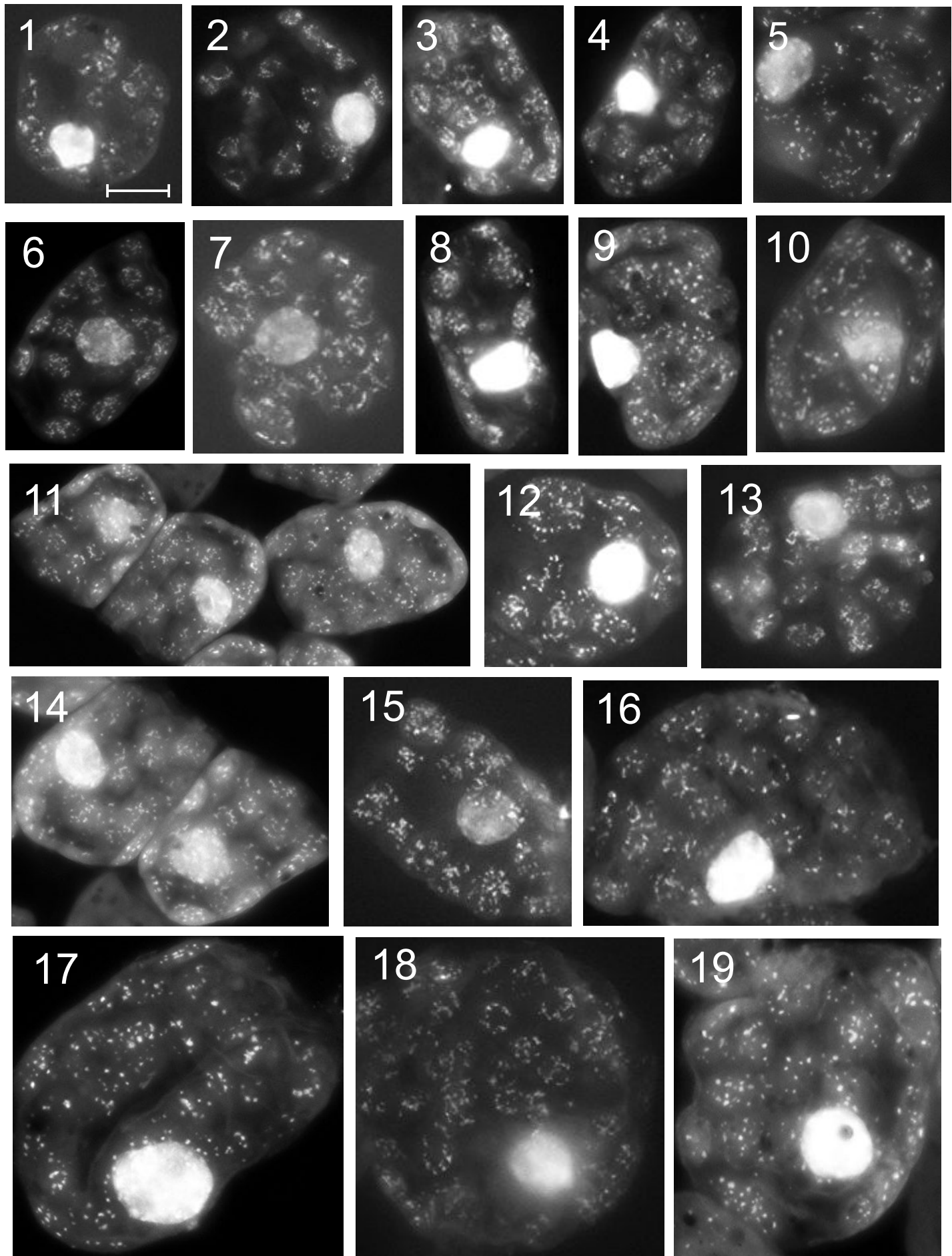
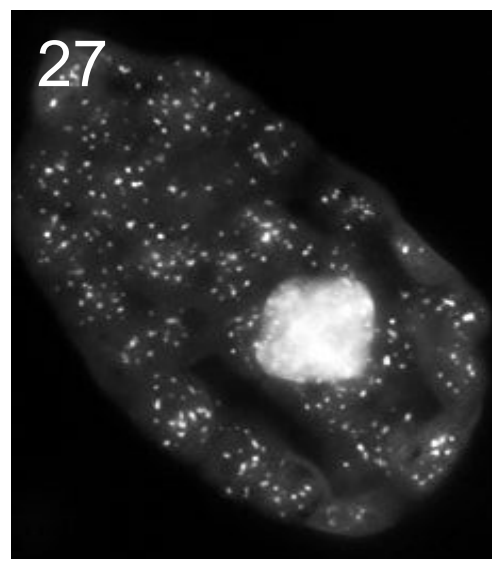
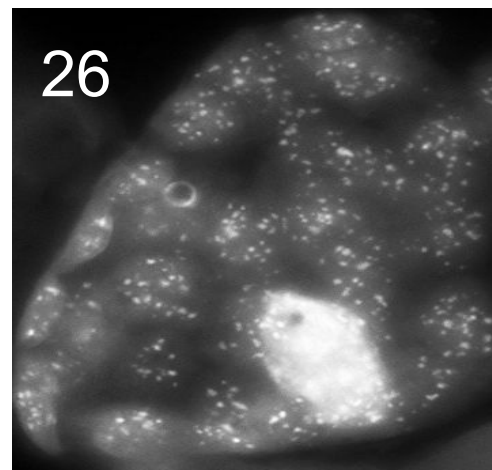
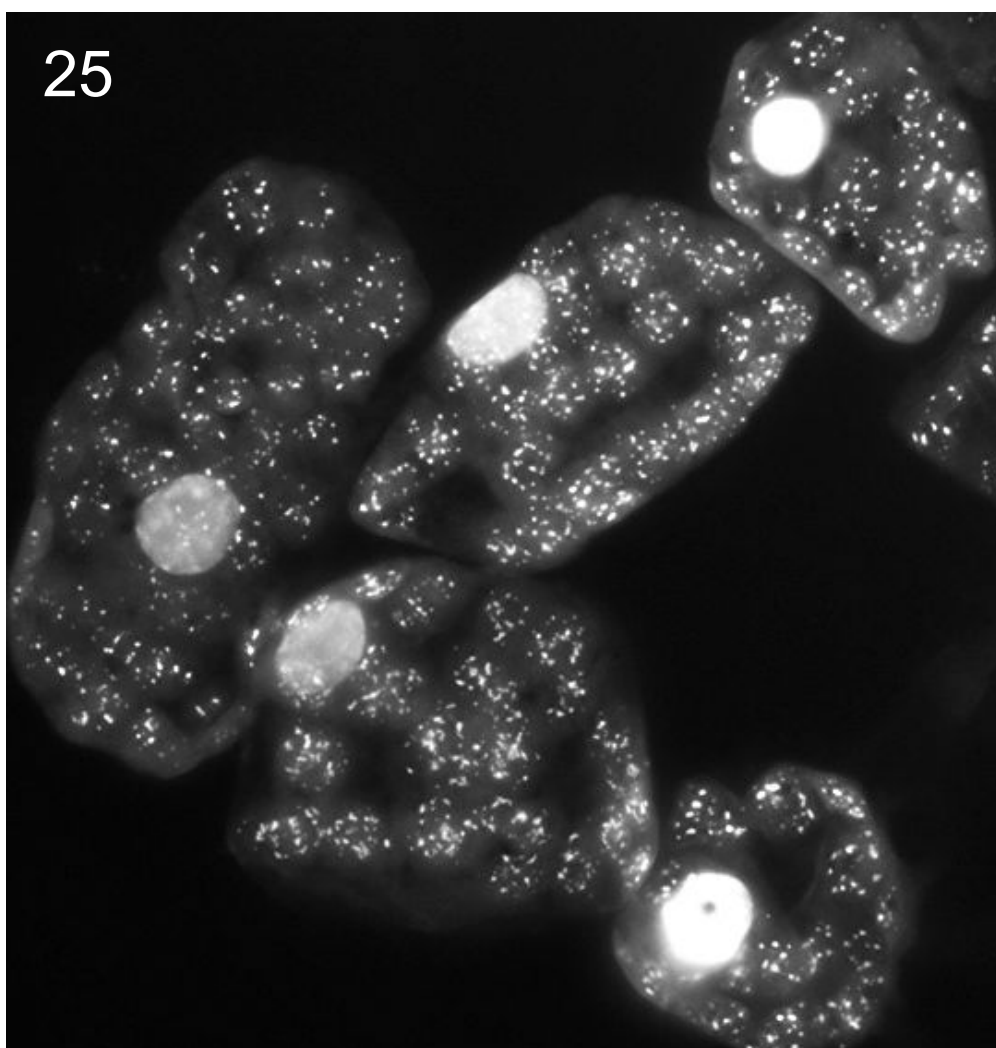
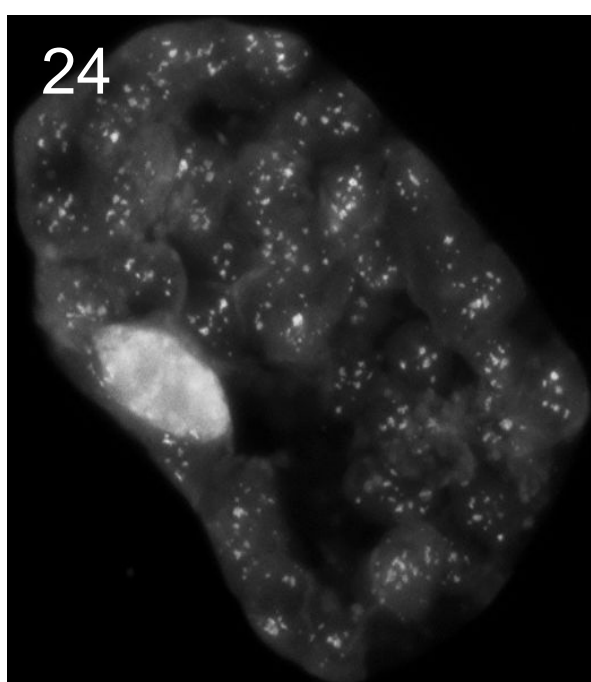
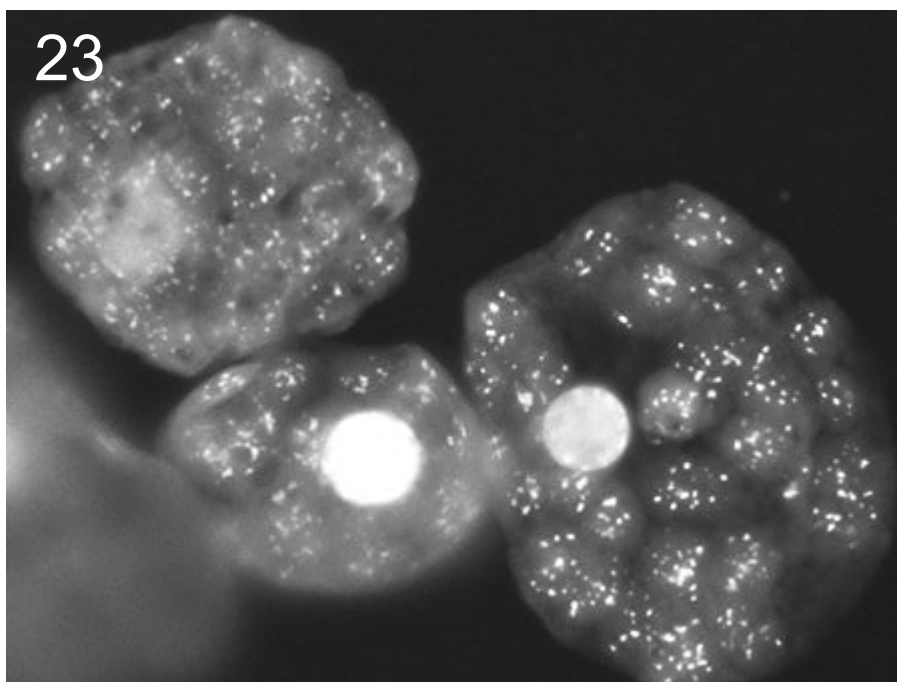
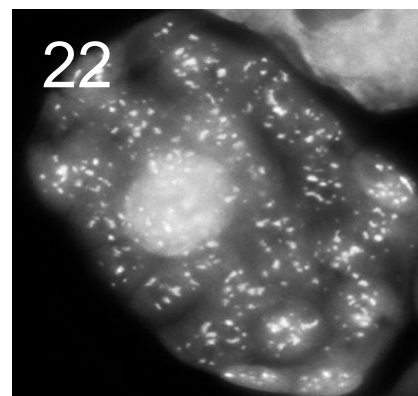
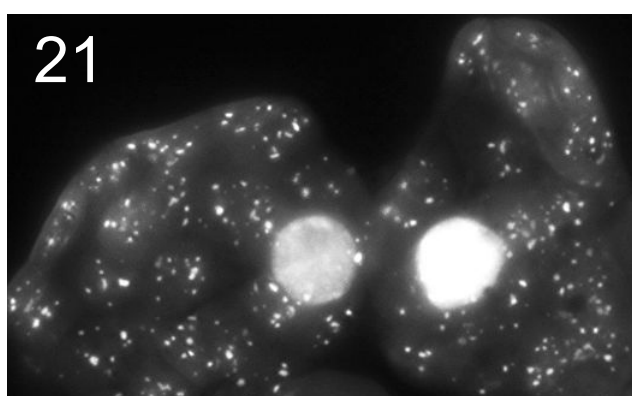
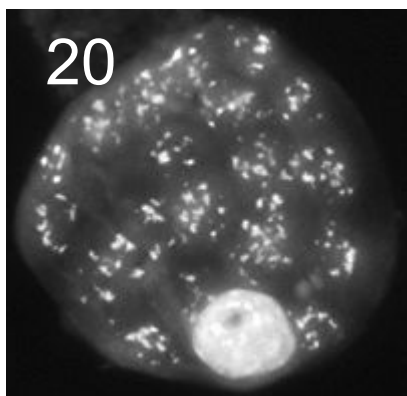


## Sugar beet (*Beta vulgaris*)

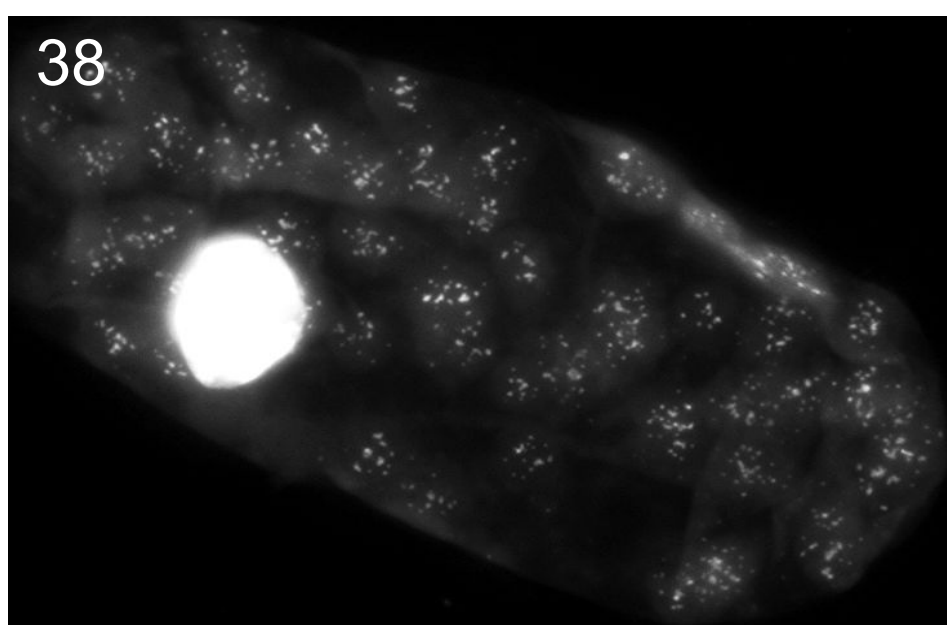
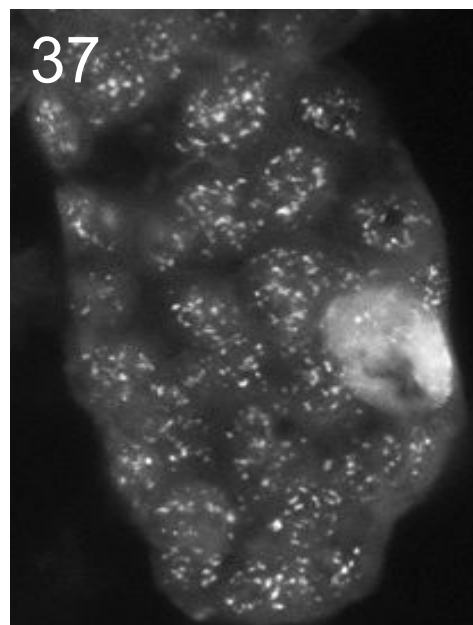
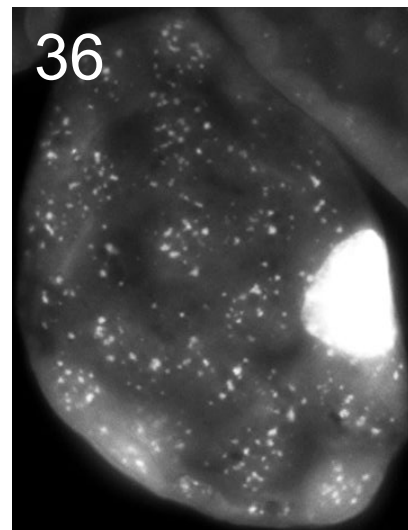
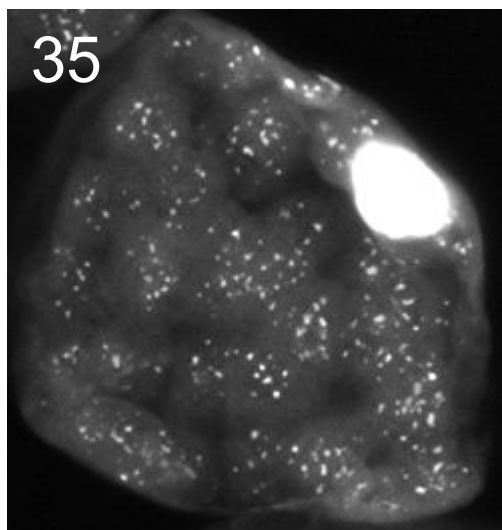
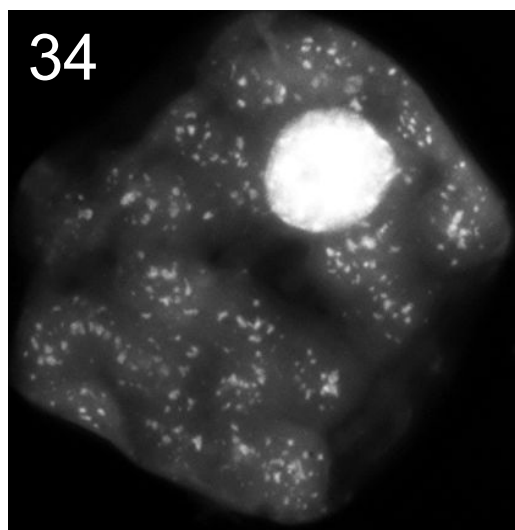
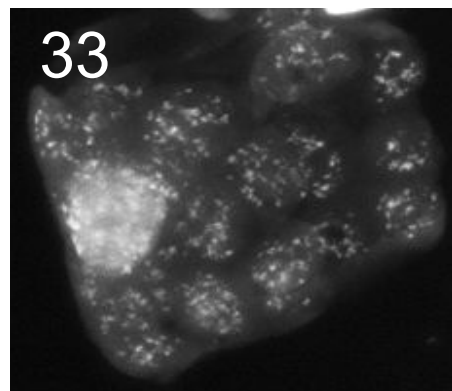
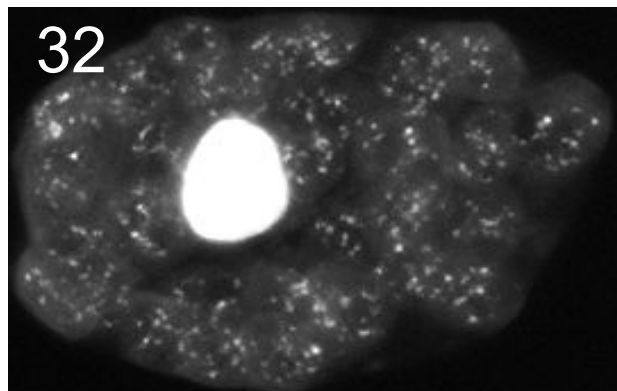
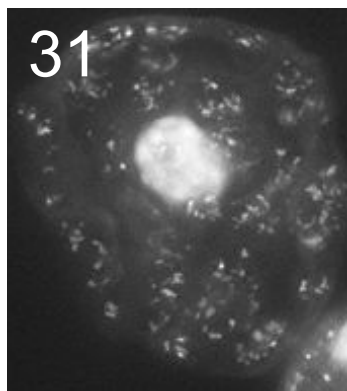
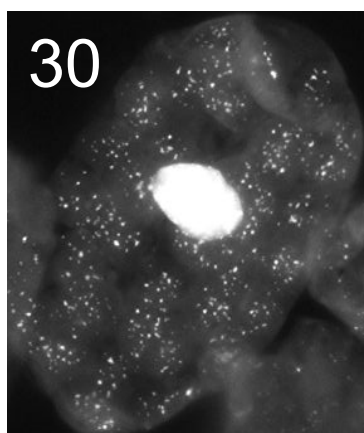
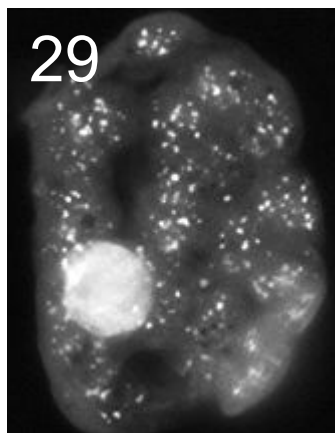
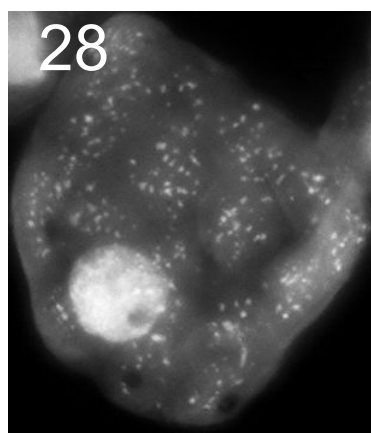
Examples of DAPI stained mesophyll cells of leaf stages y1 - y4 and I

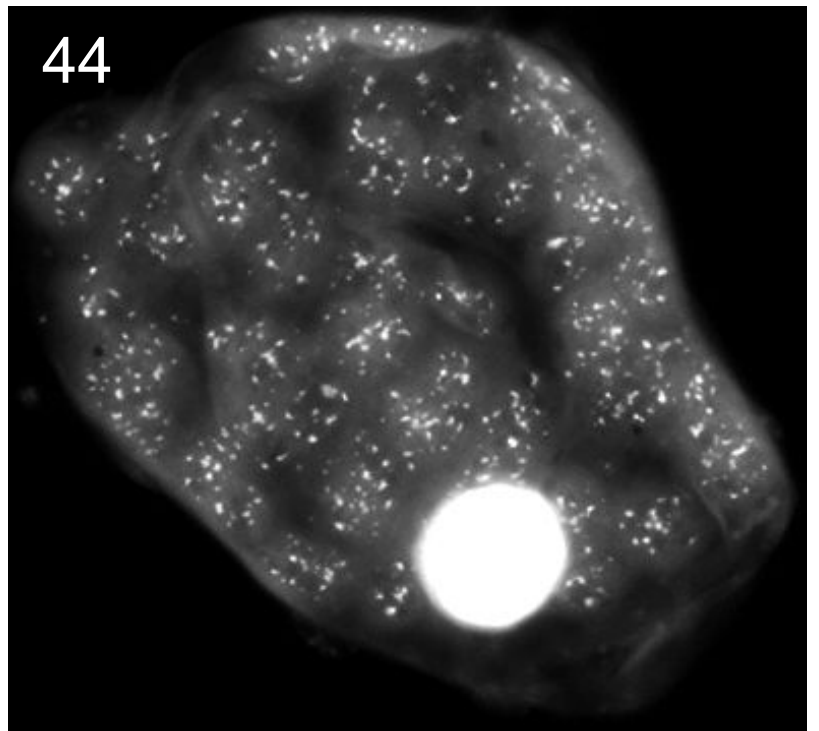
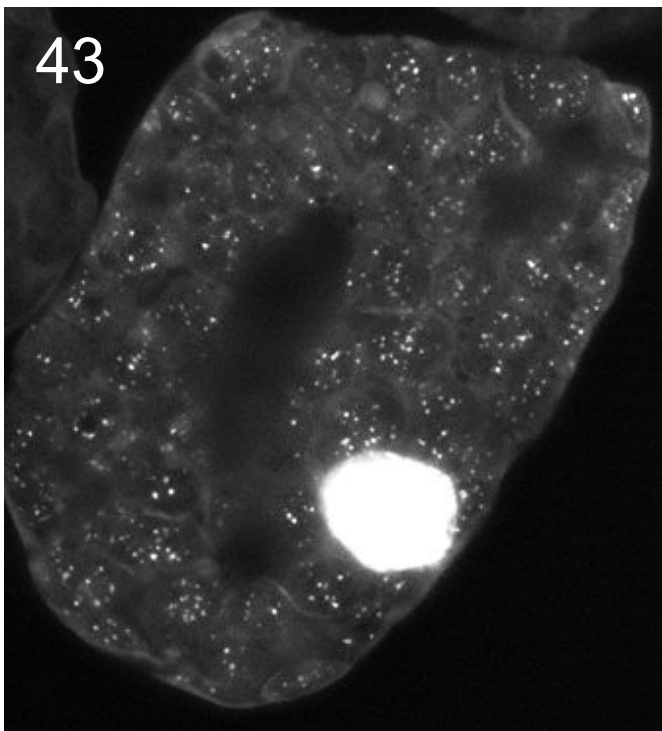
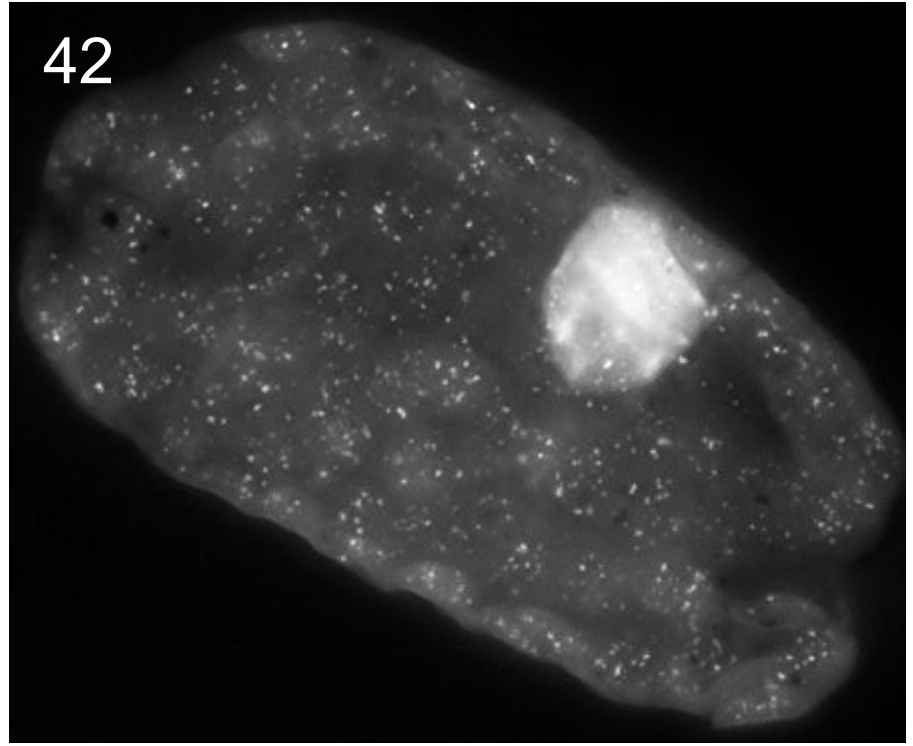
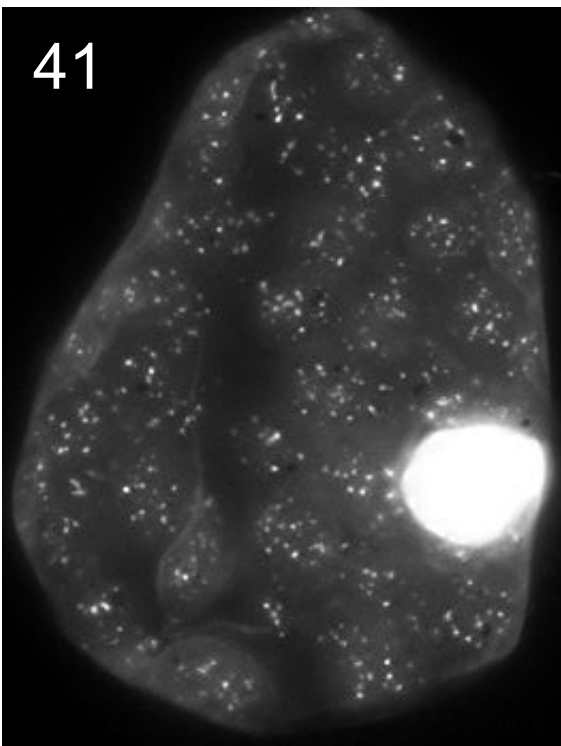
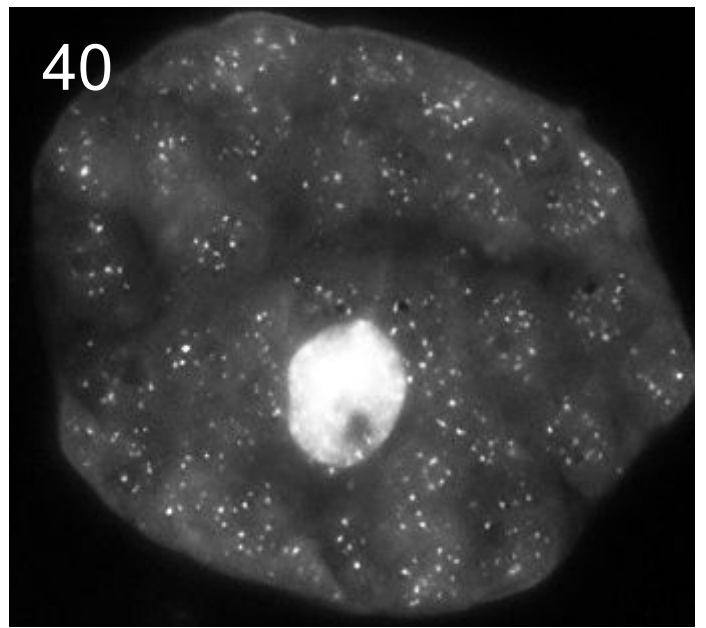
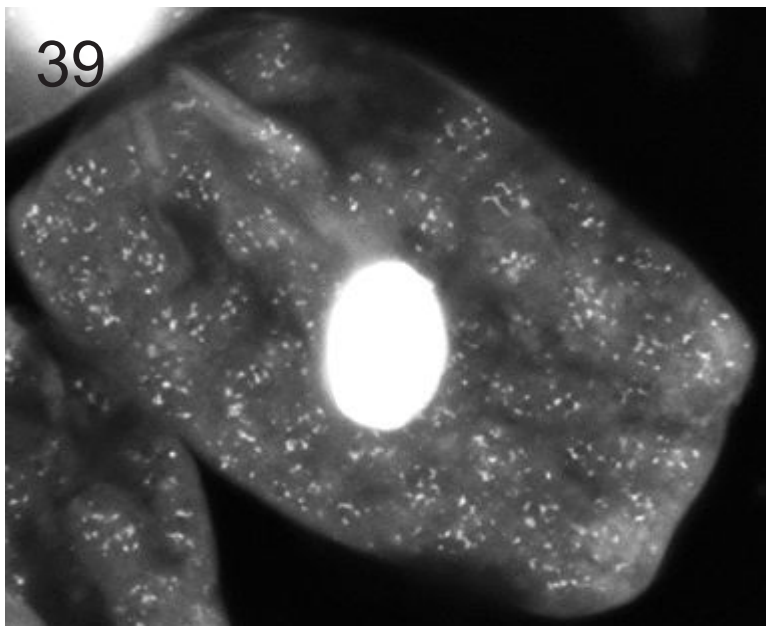


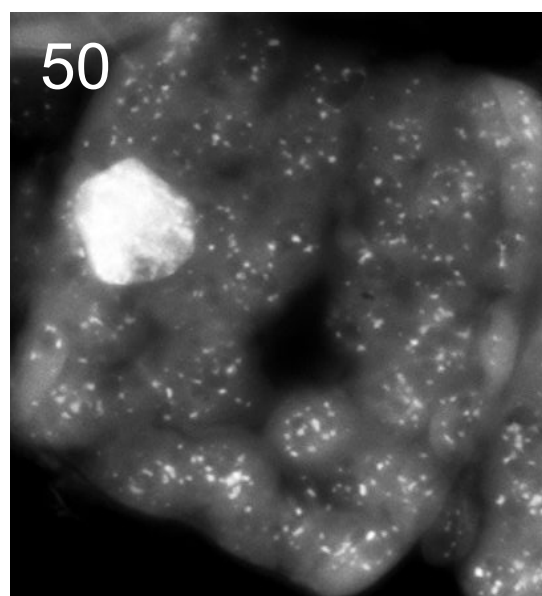
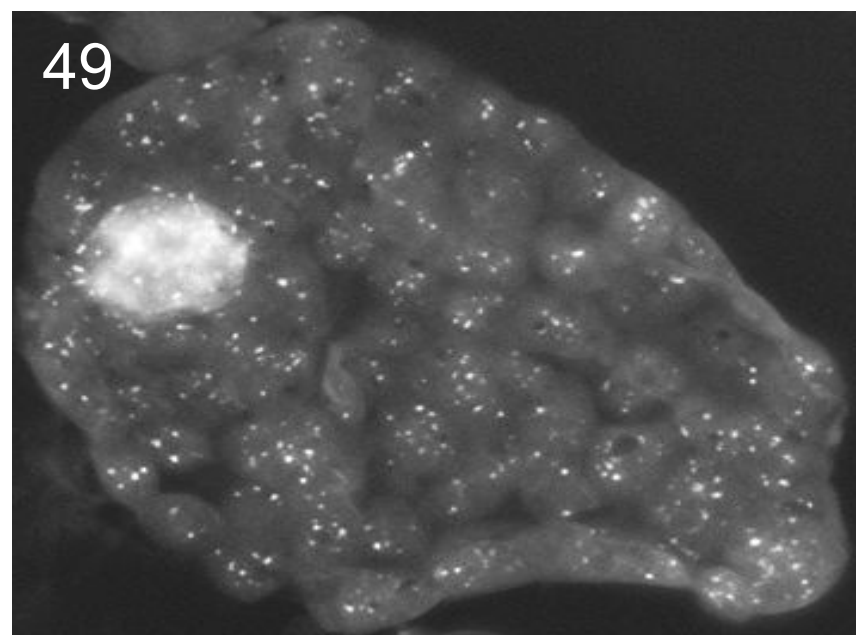
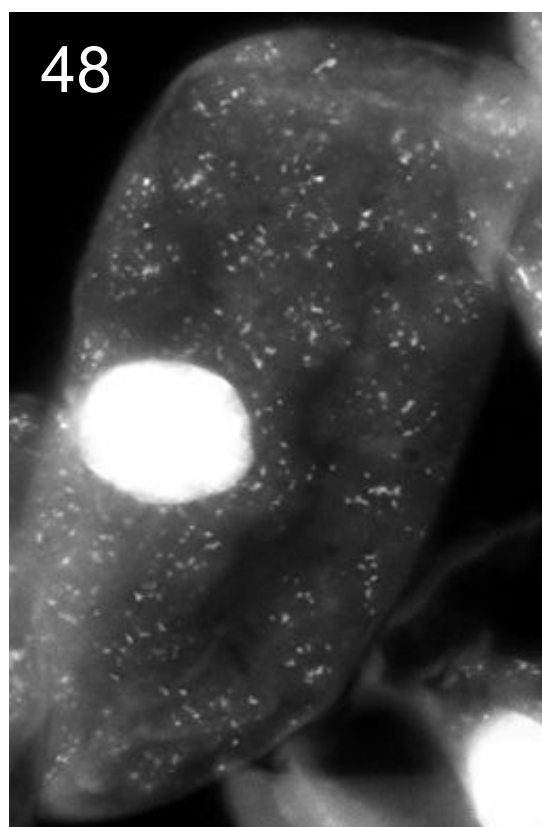
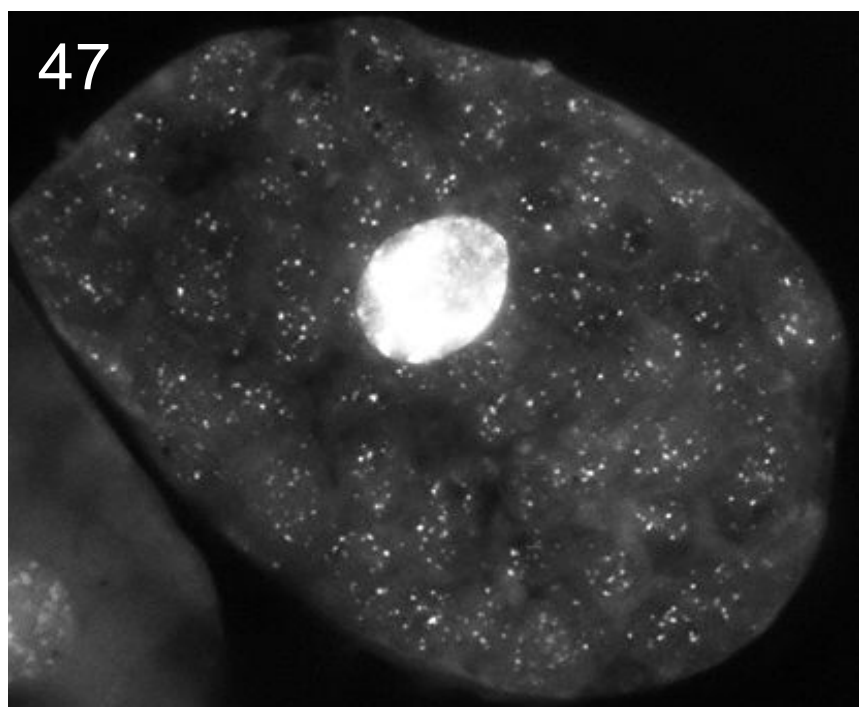
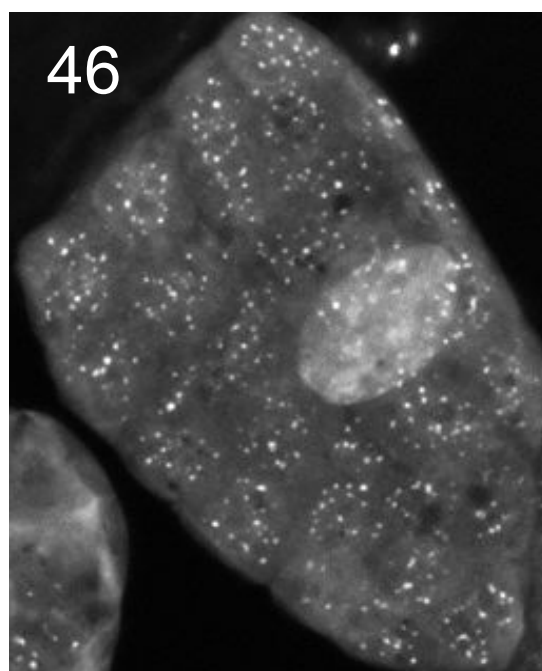
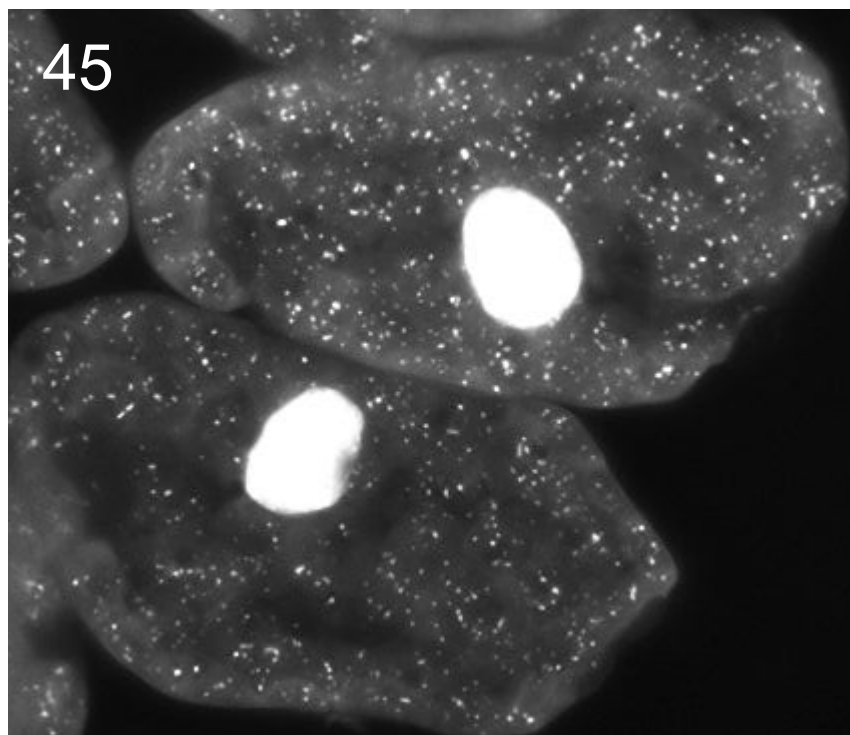
Bar: 5  $\mu$ m, in (1) also for (2 - 83)

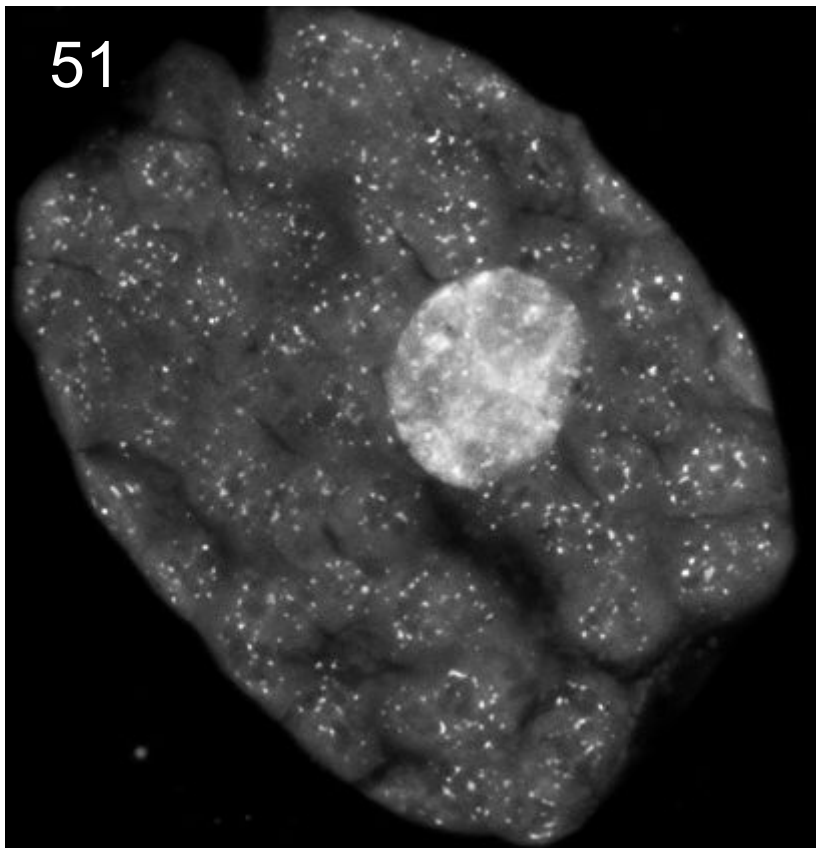


Examples of DAPI stained mesophyll cells of leaf stages II and III

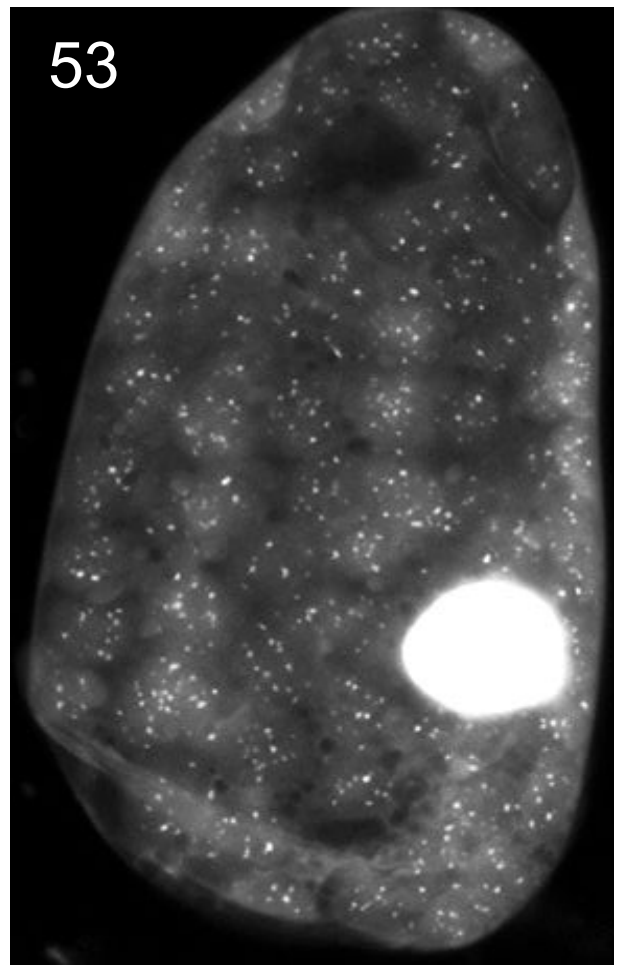
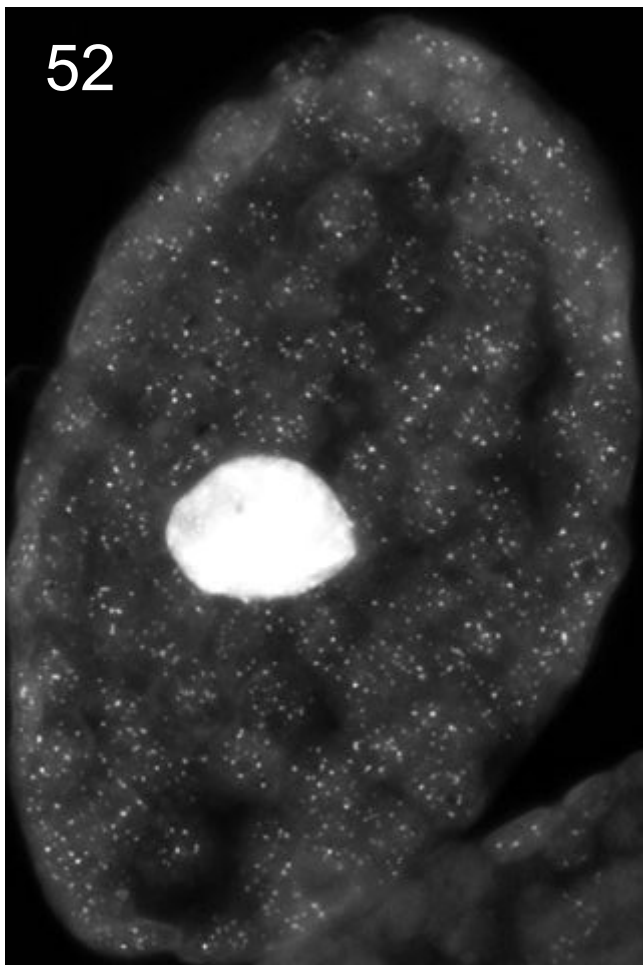


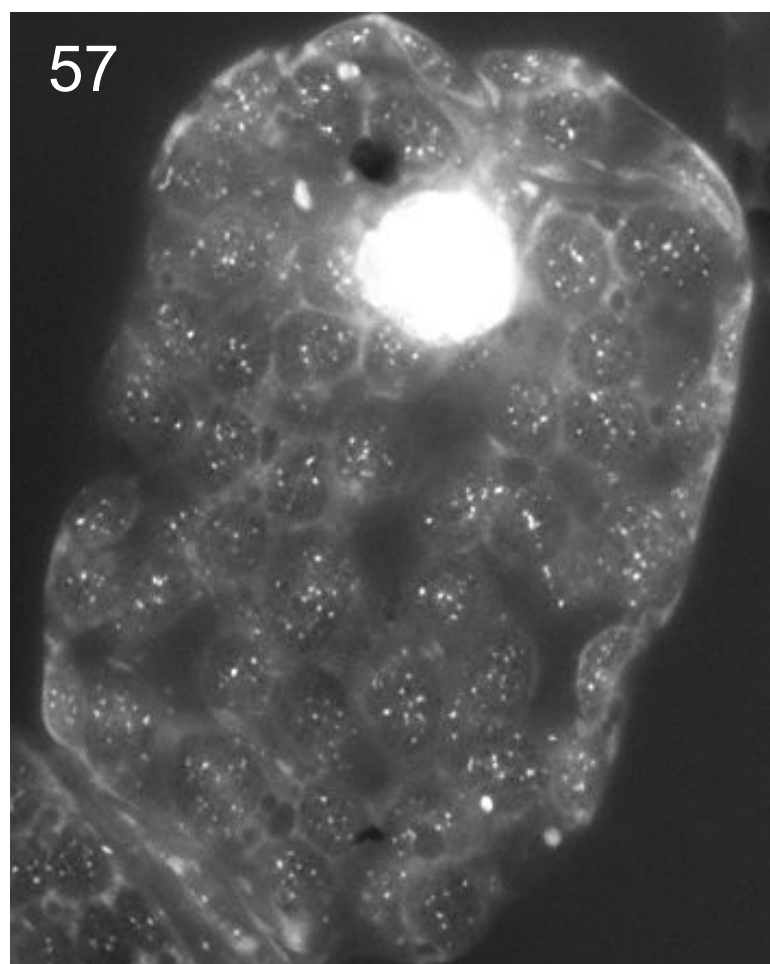
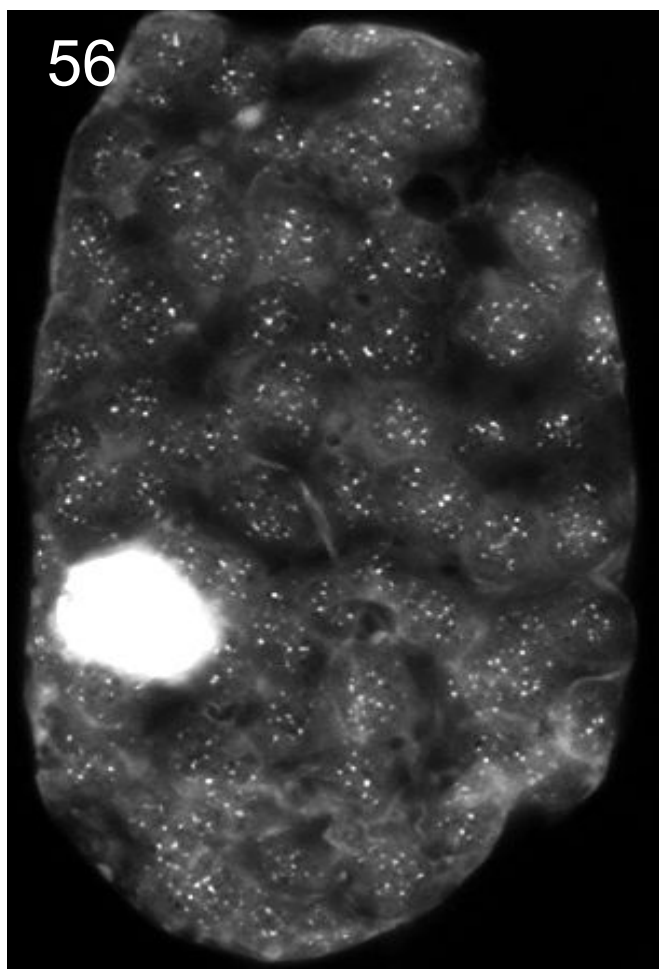
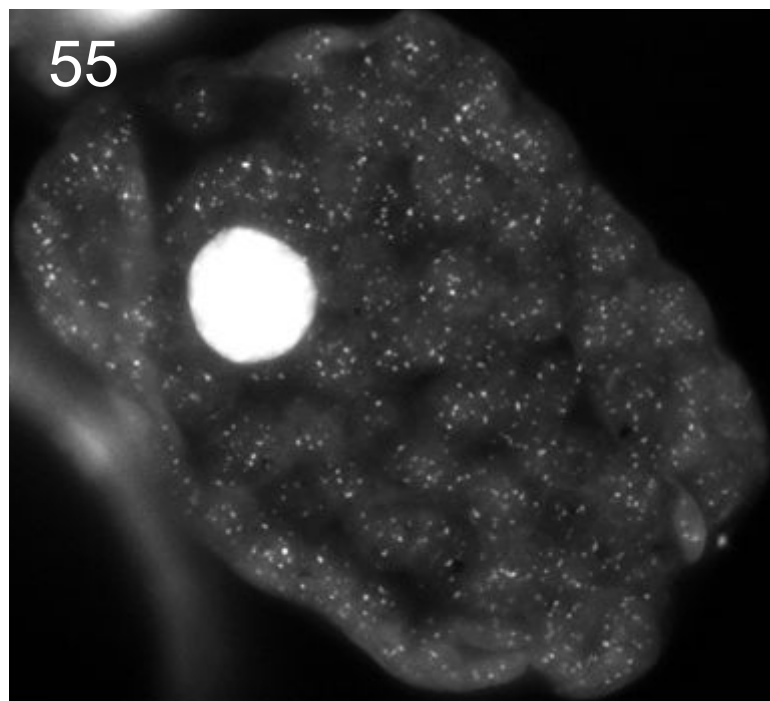
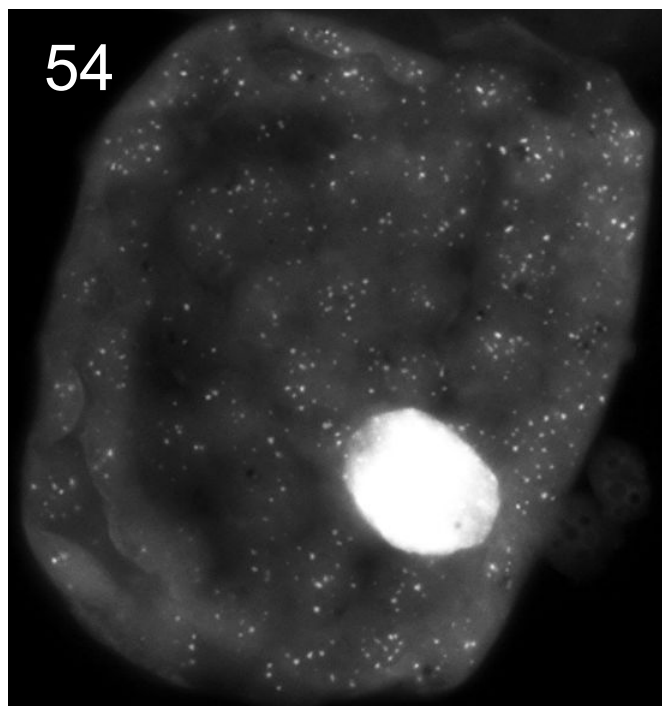


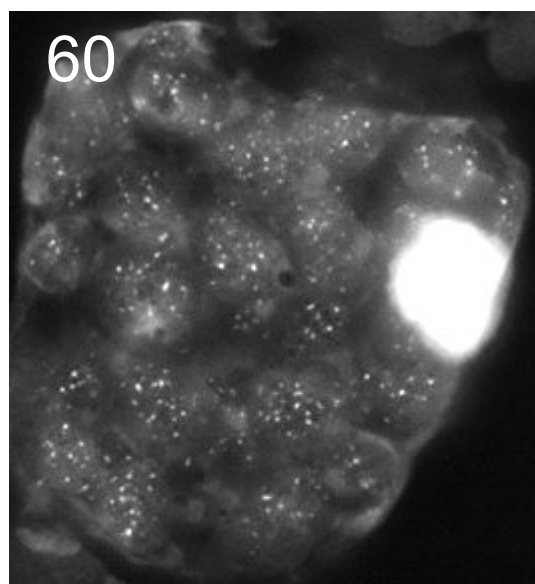
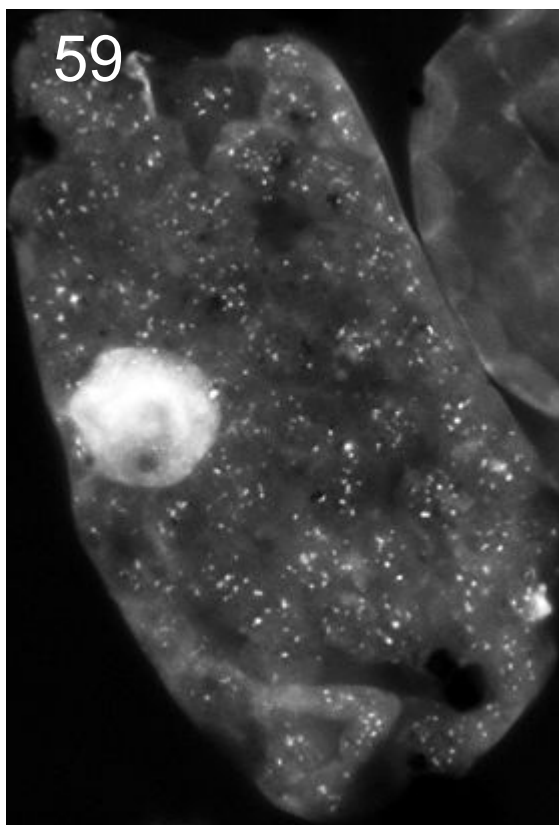
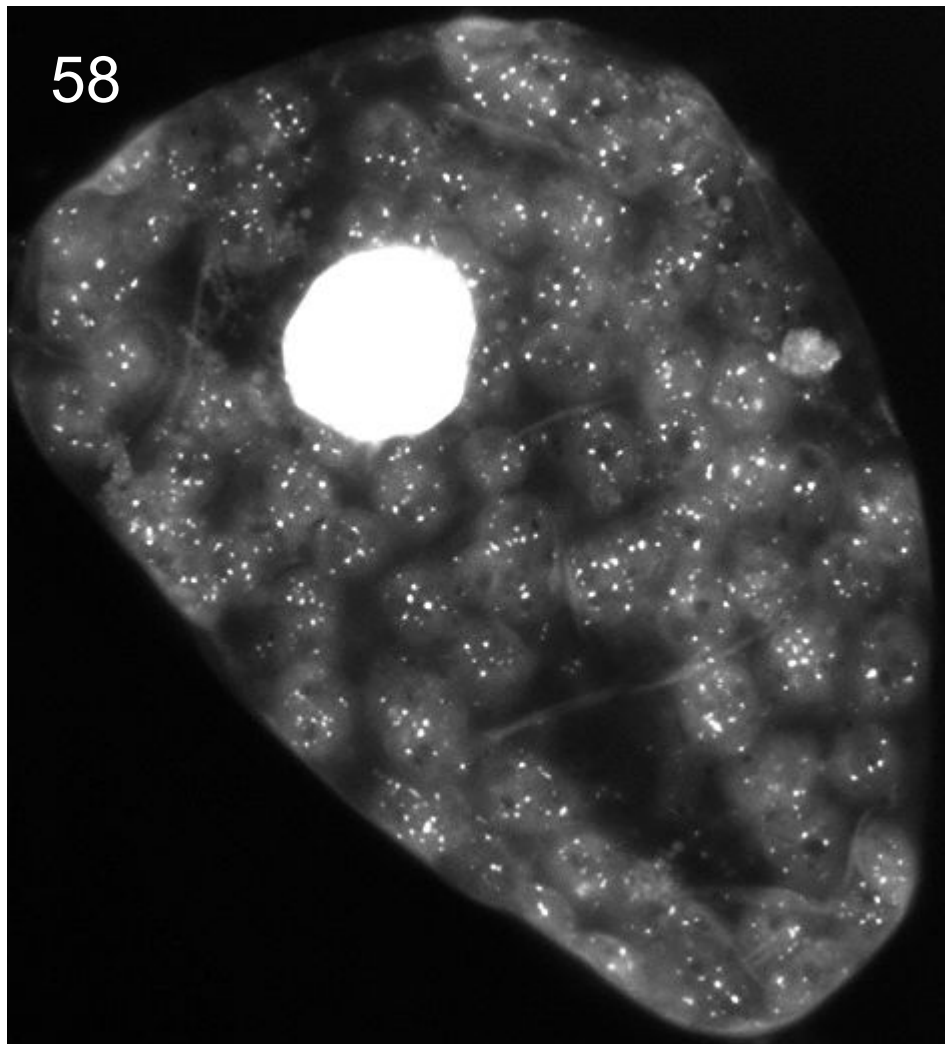




Examples of DAPI stained mesophyll cells of leaf stages IV

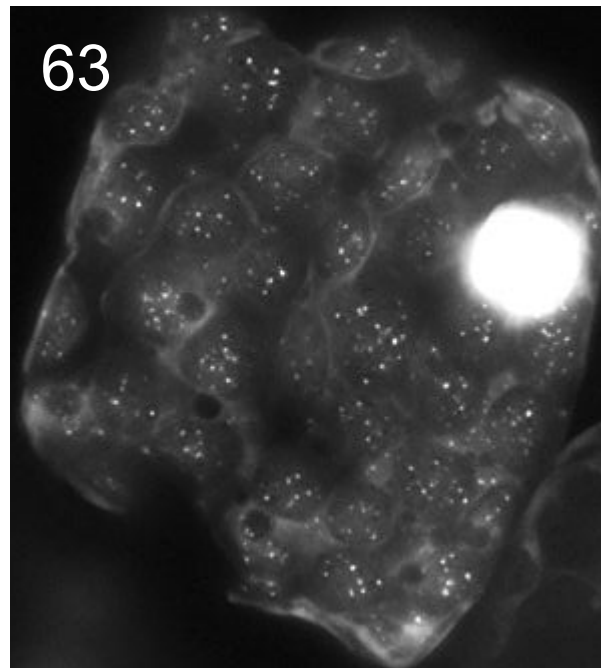
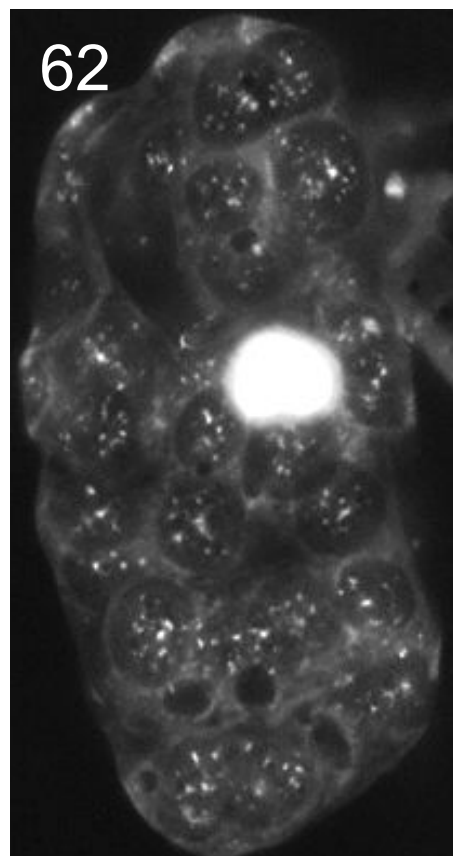
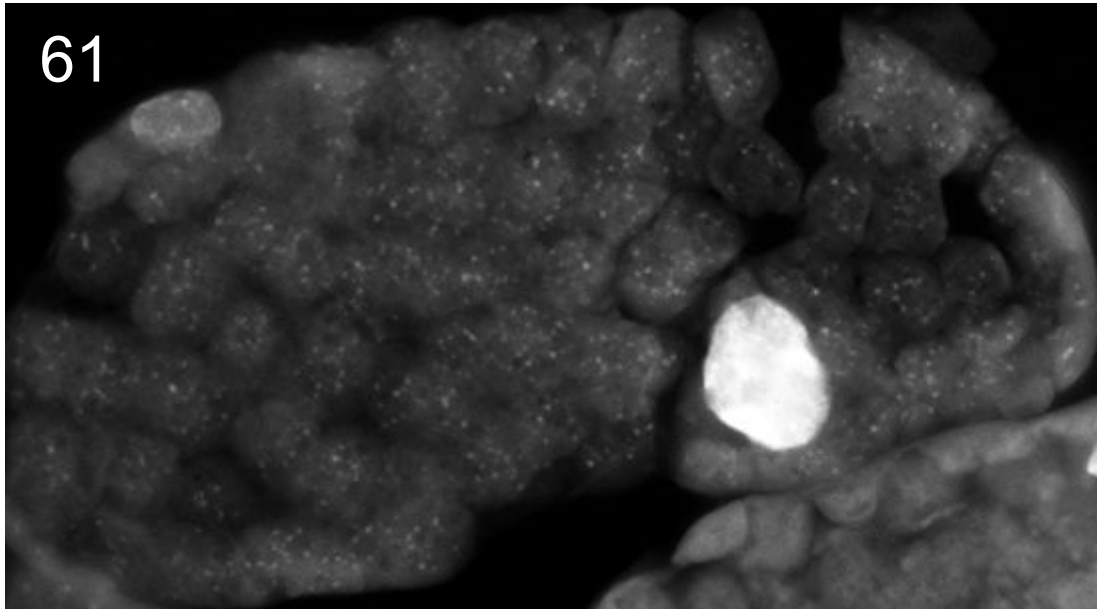


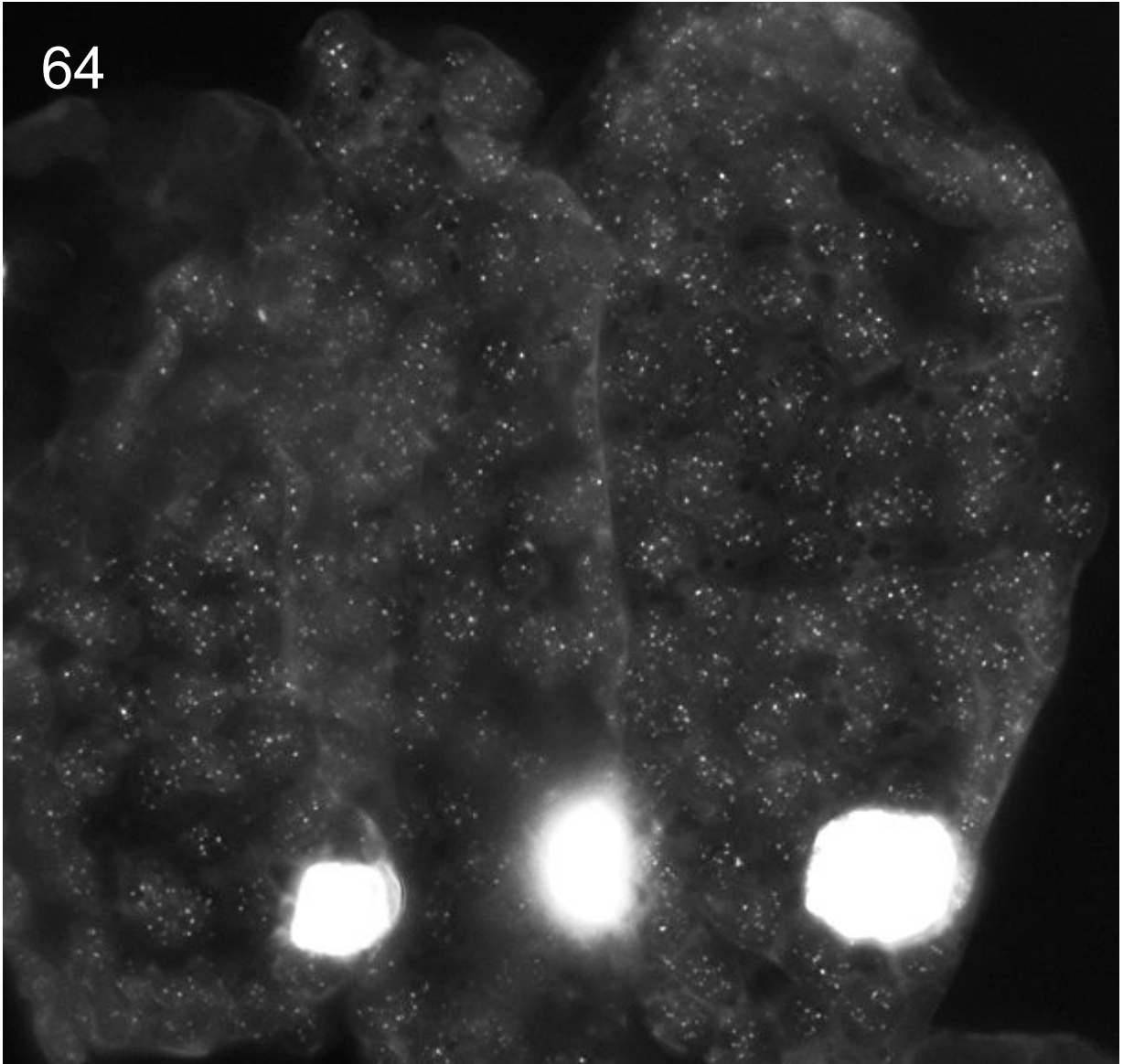


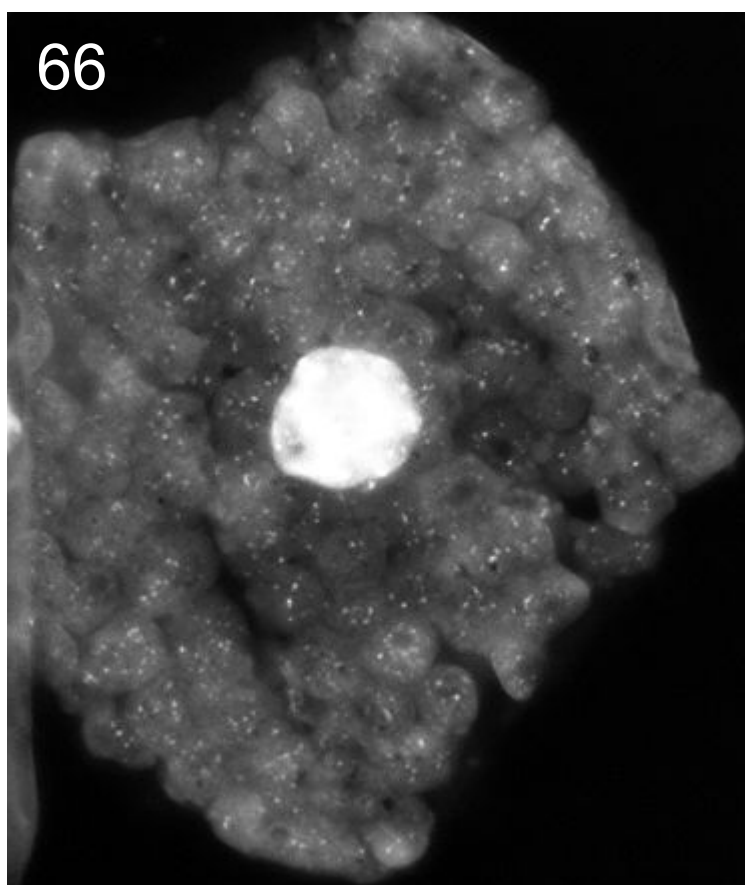
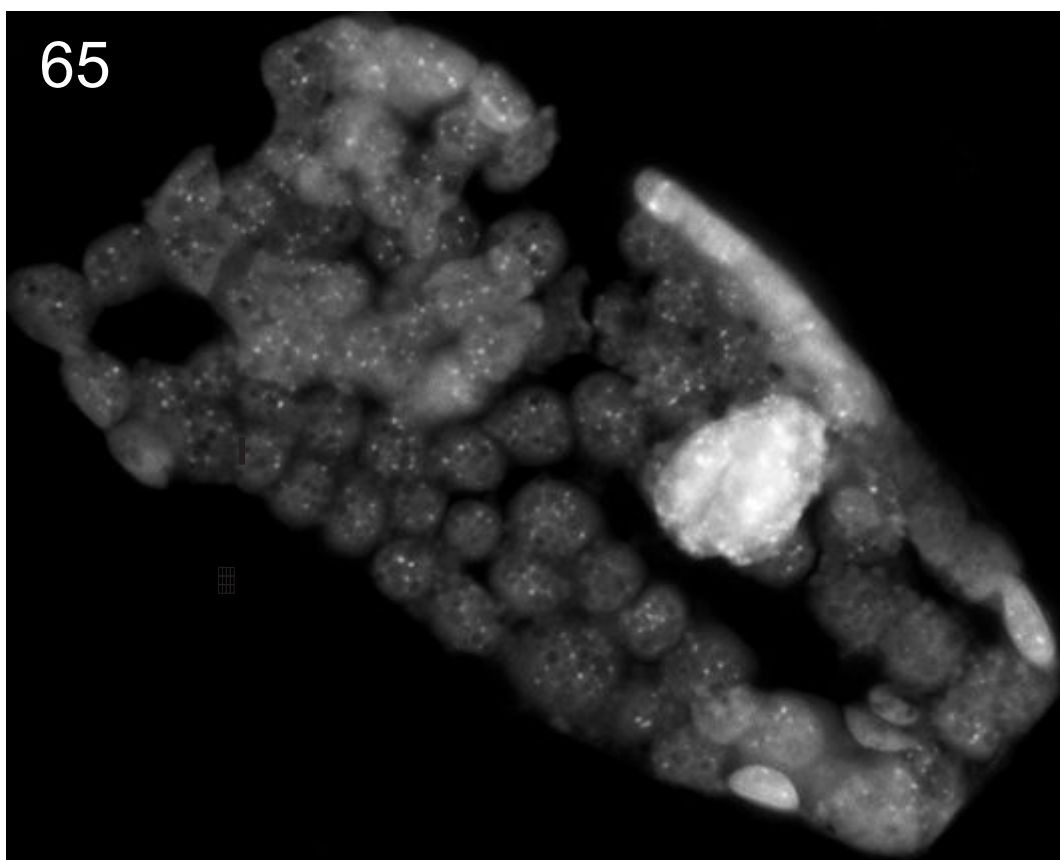




Examples of DAPI stained mesophyll cells of leaf stages V







Examples of DAPI stained mesophyll cells or cell fragmenst of of leaf stages VI

