

**Neurobiology.** In the article "Inflammatory leukocytes and cytokines in the peptide-induced disease of experimental allergic encephalomyelitis in SJL and B10.PL mice" by Jean E. Merrill, Dwight H. Kono, Julie Clayton, Dale G. Ando, David R. Hinton, and Florence M. Hofman, which appeared

in number 2, January 15, 1992, of *Proc. Natl. Acad. Sci. USA* (89, 574–578), the colors in Fig. 1 (particularly the red) were poorly reproduced. The figure and its legend are shown below.

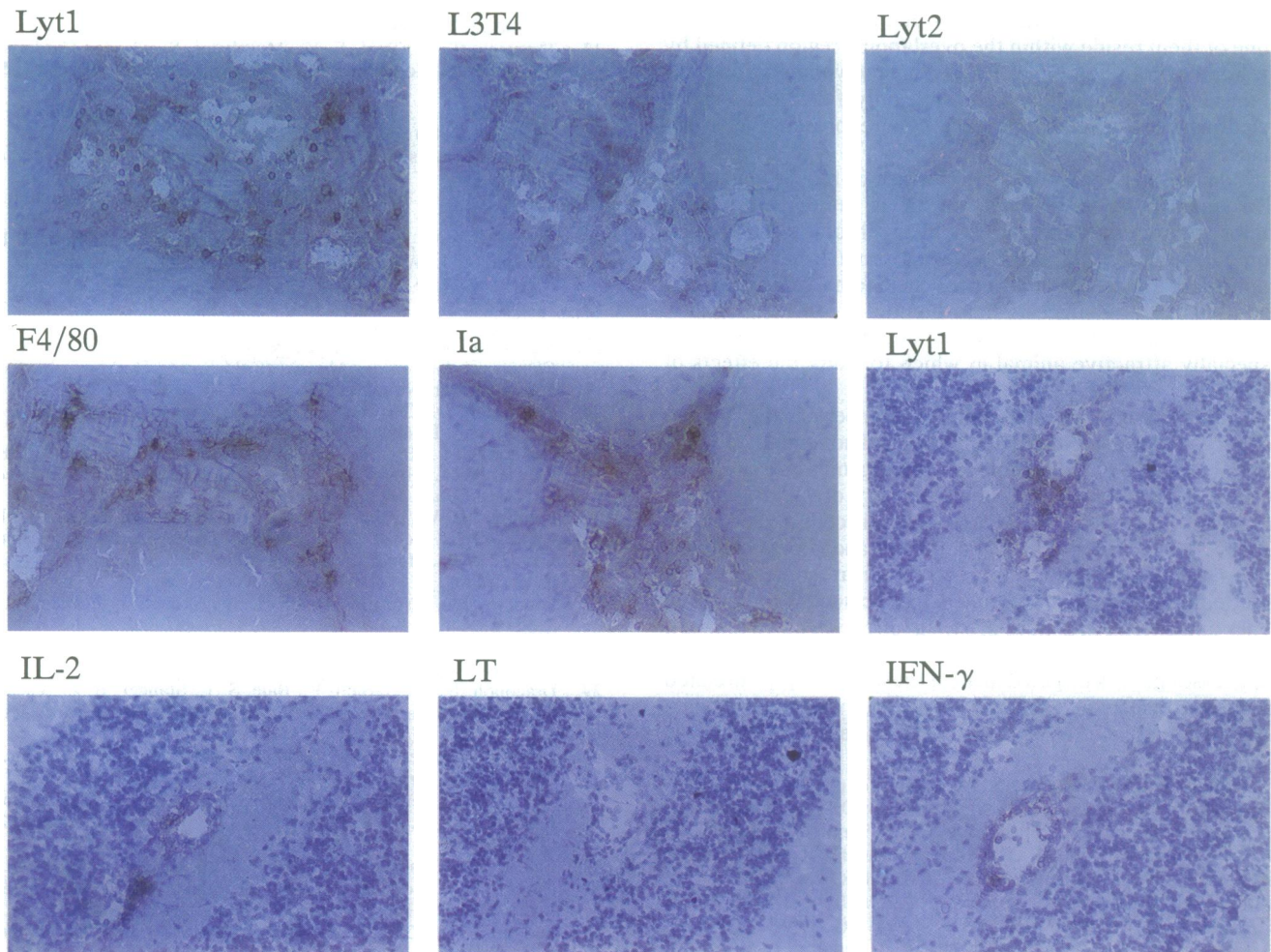


FIG. 1. Lyt1 (Top Left), L3T4, Lyt2, F4/80, and Ia are shown from an SJL/J mouse with stage 1 disease, sacrificed at day 11 (group 2). Inflammation is in the hippocampal fissure and meninges. Lyt1 (Middle Right), IL-2, LT, and IFN- $\gamma$  are shown from an SJL/J mouse with stage 2 disease, sacrificed at day 15 (group 4). Inflammation is in the white matter parenchyma of the cerebellum. No primary or control primary antibody control followed by anti-secondary antibody were negative (data not shown) and resembled negative LT shown above in this figure. ( $\times 400$ .)

**Genetics.** In the article "Human glucokinase gene: Isolation, characterization, and identification of two missense mutations linked to early-onset non-insulin-dependent (type 2) diabetes mellitus" by M. Stoffel, Ph. Froguel, J. Takeda, H. Zouali, N. Vionnet, S. Nishi, I. T. Weber, R. W. Harrison, S. J. Pilkis, S. Lesage, M. Vaxillaire, G. Velho, F. Sun, F. Iris, Ph. Passa, D. Cohen, and G. I. Bell, which appeared in number 16, August 15, 1992, of *Proc. Natl. Acad. Sci. USA* (89, 7698–7702), the authors request that the following correction be noted. In the sequence presented on p. 7700 in Fig. 2, amino acid 171 should be Phe (TTC) rather than Ile (ATC).