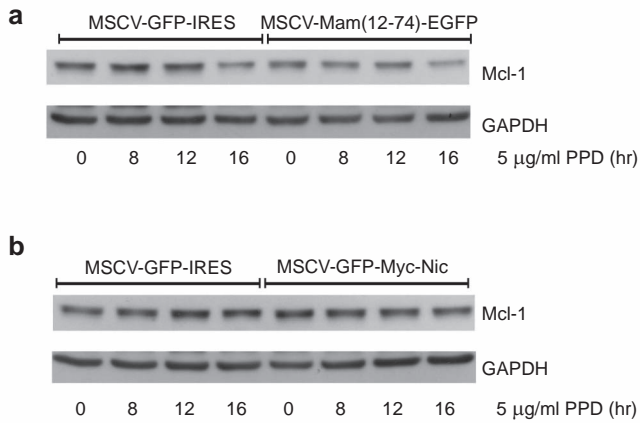


Supplemental Figure 1 Silencing *Notch1* in RAW264.7 using siRNA approach decreases Mcl-1 expression. RAW264.7 cells were transiently transfected with the indicated siRNA for 55 h and treated with PPD (5 μ g/ml) for 12 h. Expression of Notch1 and Mcl-1 were detected by western blot. Mcl-1, myeloid cell leukemia sequence-1; PPD, purified protein derivative.



Supplemental Figure 2 Effects of hyperactivation of Notch or suppression of Notch signaling on PPD-induced Mcl-1 expression in human monocytic leukemia cell line, THP-1. **(a)** THP-1 cells were retrovirally transduced with control plasmid MSCV-GFP-IRES or MSCV-Mam (12-74)-EGFP. Cells were sorted for GFP⁺ cells and treated with PPD for the indicated times. The expression of Mcl-1 was investigated by western blot. GAPDH was used as a loading control. **(b)** THP cells were retrovirally transduced with control plasmid MSCV-GFP-IRES or MSCV-GFP-Myc-Nic. Cells were sorted for GFP⁺ cells and treated with PPD for the indicated times. The expression of Mcl-1 was investigated by western blot. GAPDH was used as a loading control. GAPDH, glyceraldehyde 3-phosphate dehydrogenase; Mcl-1, myeloid cell leukemia sequence-1; PPD, purified protein derivative.