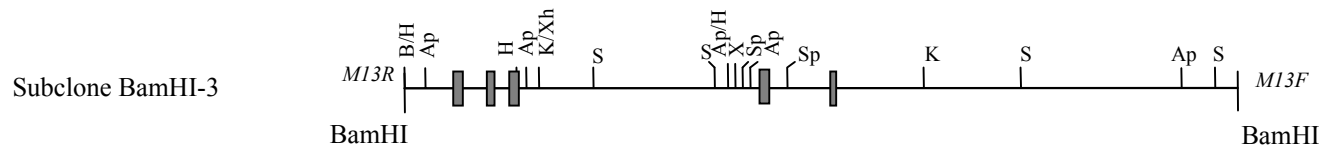


Exon	mouse cDNA n.t.
1	1- 91
2	92-157
3	158-300
4	301-357
5	358-438
6	439-514
7	515-577
8	578-719
9	720-776
10	777-861

*Exon*    2   3   4    5   6   7                      8    9



1 kb

**Supplementary Figure 1. Vector construction strategy.** A plasmid contig of 22.7 kb was constructed from the three subclones XhoI-3, HindIII-2, and BamHI-3. Subclones HindII-2 and BamHI-3 were used to construct the *Hip1r* targeting vector. Mouse nucleotide numbers are based on NCI accession # AF221713. K=KpnI; Ap=ApaI; B=BamHI; E=EcoRI; Rv=EcoRV; H=HindIII; S=SacI; Sp=SpeI; X=XbaI; Xh=XhoI.