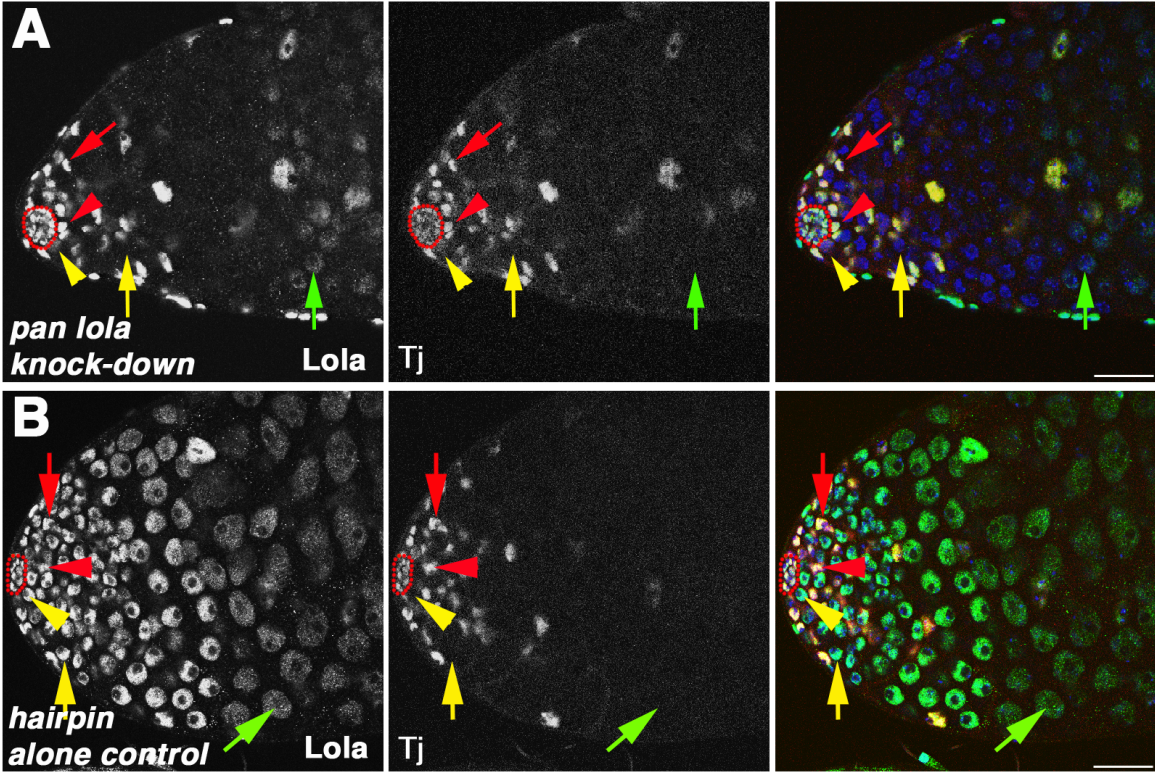


Supplementary Figure 1



Supplementary Figure 1: Lola protein was not detected in GSCs and early germ cells in *pan-lola* knock-down testes

A: *pan lola* knock-down testis (*w, UAS-dcr-2; UAS- lola RNAi/+; UAS- lola RNAi/NG4VP16*) and **B:** hairpin alone testis (*w, UAS-dcr-2; UAS- lola RNAi/+; UAS-lola RNAi/+*) costained with antibodies against the Lola common domain and Tj. Red: Tj, somatic nuclei. Green: Lola. Blue: DAPI. Red outlines: hub. Yellow arrowheads: GSCs. Yellow arrows: spermatogonia. Red arrowheads: CySCs. Red arrows: Cyst cells. Green arrowheads: Spermatocytes. Scale bar: 25 μ m.