

Supplementary Information

for

The c-Abl inhibitor, Nilotinib, protects dopaminergic neurons in a preclinical animal model of Parkinson's disease.

Senthilkumar S. Karuppagounder^{1,2,6}, Saurav Brahmachari^{1,2,6}, Yunjong Lee^{1,2,3,6}, Valina L. Dawson^{1-3,5,6}, Ted M. Dawson^{1,2,4-6*} and Han Seok Ko^{1,2,7*}

¹Neuroregeneration and Stem Cell Programs, Institute for Cell Engineering, Departments of ²Neurology, ³Physiology, ⁴Pharmacology and Molecular Sciences and ⁵Solomon H. Snyder Department of Neuroscience, The Johns Hopkins University School of Medicine, Baltimore, MD 21205. USA.

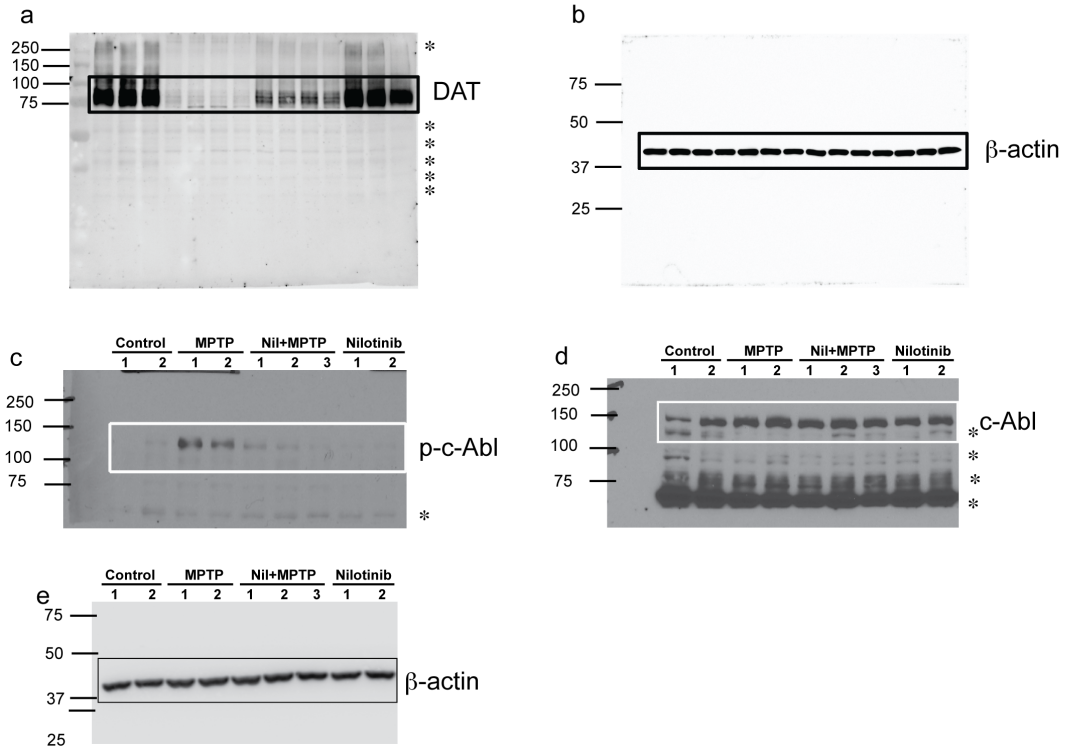
⁶Adrienne Helis Malvin Medical Research Foundation, New Orleans, LA 70130-2685, USA

⁷Diana Helis Henry Medical Research Foundation, New Orleans, LA 70130-2685, USA

*Both authors contributed equally and to who correspondence may be addressed:

Neuroregeneration and Stem Cell Programs
Institute for Cell Engineering
Johns Hopkins University School of Medicine
733 North Broadway, Suite 731
Baltimore, MD 21205
Email: hko3@jhmi.edu or tdawson@jhmi.edu

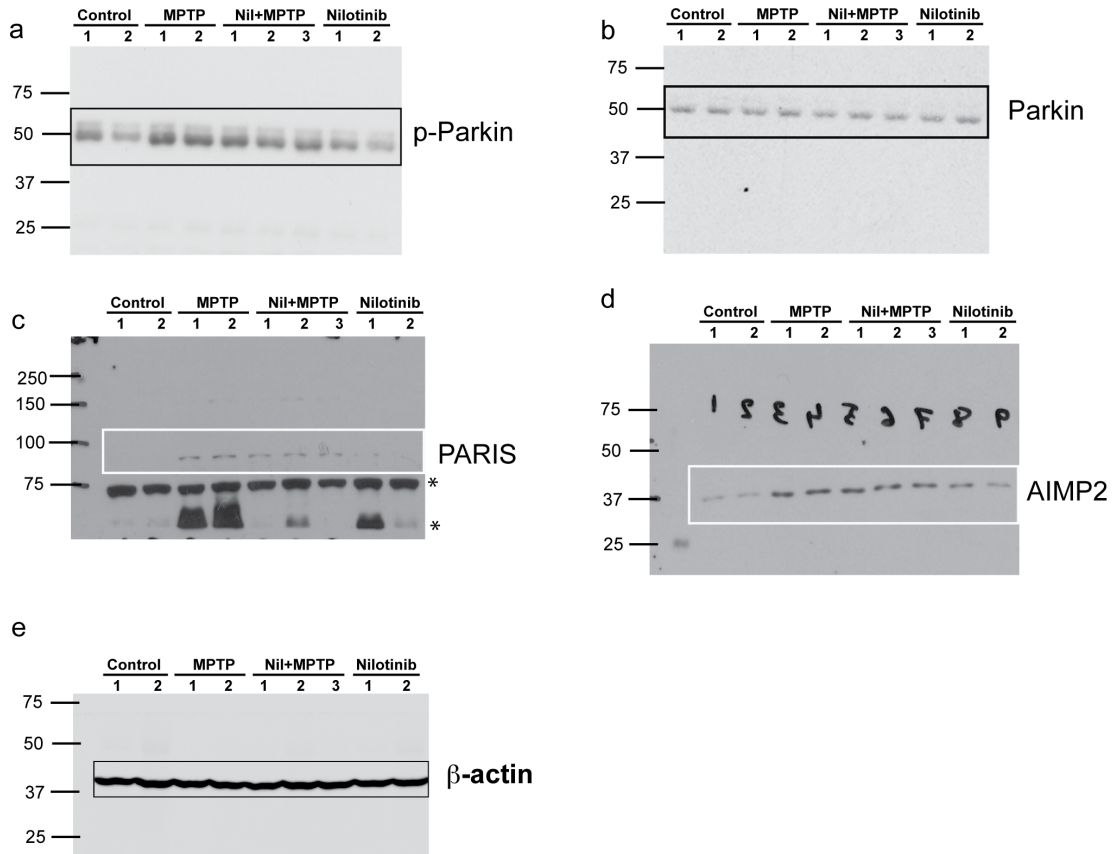
Karuppagounder *et al.* Supplementary Figure S1



Supplementary Figure S1:

Full-length images of western blots scanned or obtained from chemidoc imaging system. Rectangular boxes indicate cropped regions used in the representative images. Full-length images of (a) DAT, (b) β -actin blots of Figure 2c ; (c) p-c-Abl, (d) c-Abl, and (e) β -actin blots of Figure 2e. *Nonspecific bands

Karuppagounder *et al.* Supplementary Figure S2



Supplementary Figure S2:

Full-length images of western blots scanned or obtained from chemidoc imaging system. Rectangular boxes indicate cropped regions used in the representative images. Full-length images of (a) p-Parkin, (b) Parkin, (c) PARIS, (d) AIMP2 and (e) β -actin blots of Figure 7a.

*Nonspecific bands.