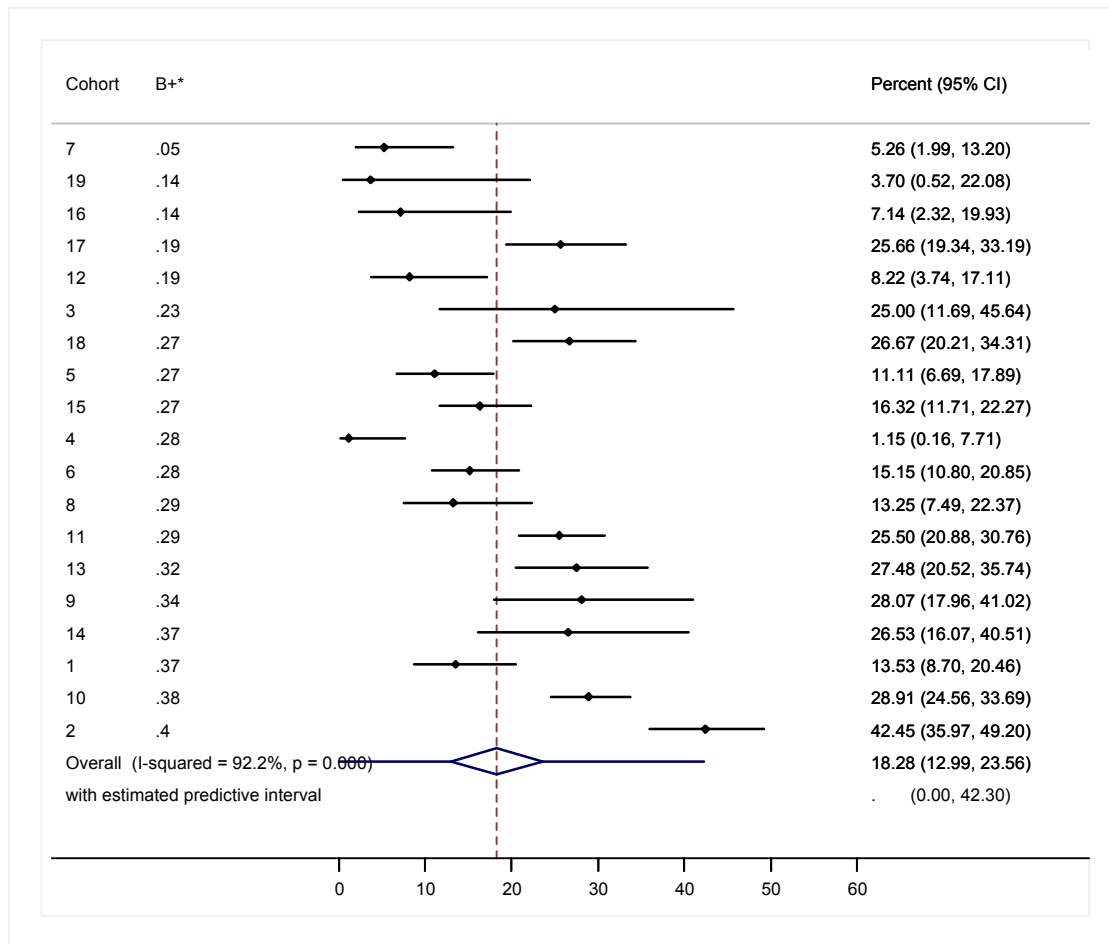


## Web-Supplements

**Figure S1: Percentage of Option B+ pregnant women with no follow-up visit – random effects meta-analysis**

Forest plot for the percentage of pregnant Option B+ patients who missed their first follow-up visit and failed to return to the clinics for more than 60 days (no follow-up after ART initiation).

\*Study facilities are sorted by the proportion of Option B+ pregnant women per facility



**Table S1: Predictors of the between-cohort variance for the odds of pregnant Option B+ women getting lost to programme immediately after starting antiretroviral therapy (ART).**

	OR (95% CI)	p-value	Tau squared (in %) <sup>1</sup>
<b>A Univariable analysis</b>			
Proportion of B+ pregnant women <sup>2</sup> (per 10% increase)	1.83 (1.14-2.93)	0.014	81.0
Additional adherence counselling <sup>3</sup> (yes/no)	0.45 (0.20- 0.98)	0.045	77.9
<b>Facility type</b>		0.156	80.7
Health Centre	Reference		
Mission Hospital	0.53 (0.10- 2.82)		
District Hospital	2.13 (0.65- 7.00)		
Central Hospital	1.50 (0.27- 8.44)		
Urbanity (rural/urban)	0.53 (0.20- 1.40)	0.187	83.7
<b>B Multivariable analysis (Model A)</b>		0.0432	74.1
Proportion of B+ pregnant women <sup>2</sup> (per 10% increase)	1.53 (0.87- 2.68)	0.126	
Additional adherence counseling <sup>3</sup> (yes/no)	0.63 (0.28- 1.45)	0.255	
<b>C Multivariable analysis (Model B)</b>		0.028	57.7
Proportion of B+ pregnant women <sup>2</sup> (per 10% increase)	1.56 (0.85- 2.85)	0.132	
Additional adherence counseling <sup>3</sup> (yes/no)	0.71 (0.38- 1.33)	0.254	
<b>Facility type</b>			
Health Centre	Reference	0.0859	
Mission Hospital	0.84 (0.18- 4.00)		
District Hospital	1.69 (0.62- 4.57)		
Central Hospital	3.94 (1.02- 15.26)		

Multivariable analysis adjusted for all variables shown in model; CI confidence intervals

<sup>1</sup> between site variance

<sup>2</sup> Proportion of pregnant women who started with an Option B+ indication at facility among

<sup>3</sup> Some facilities offered additional counseling that is not part of the national guidelines using mentor mothers and expert patients. These counselors are experienced ART patients who share their experience on ART and motivate the women on the need and strategies for adherence