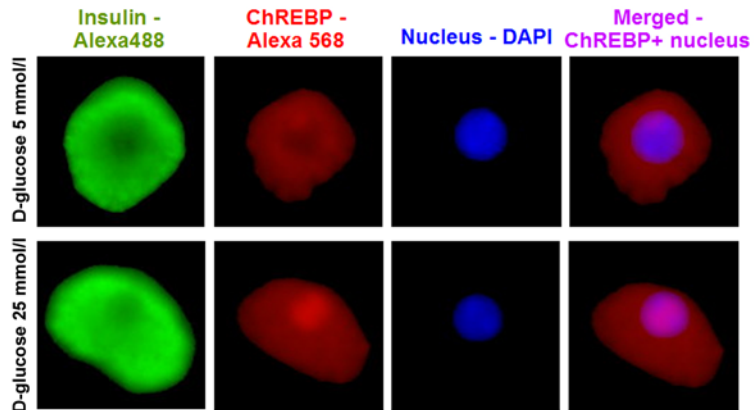


electronic supplementary material [ESM] Fig. 1



ChREBP translocation in isolated beta cells is induced by high glucose. We isolated mouse primary islets, trypsinised, seeded on glass slides, cultured in medium containing 5 mmol/l or 25 mmol/l D-glucose for 48 h and stained for insulin (green), ChREBP (red) and nucleus (blue).