

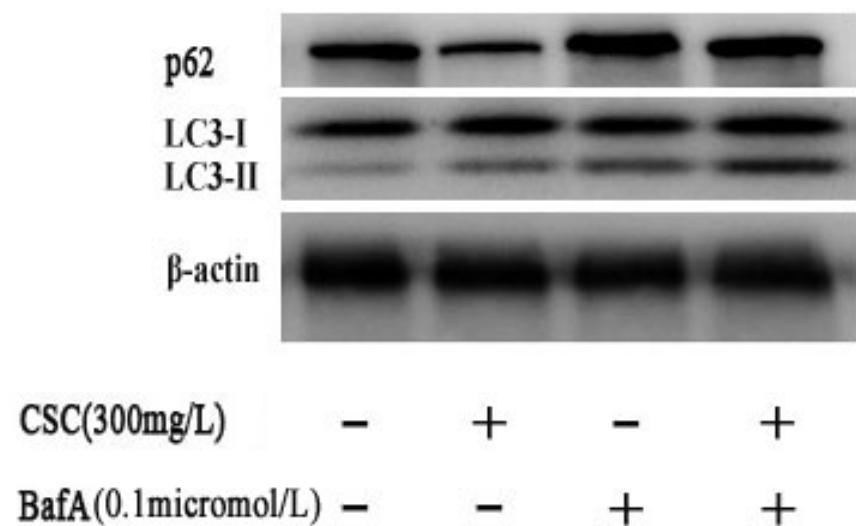
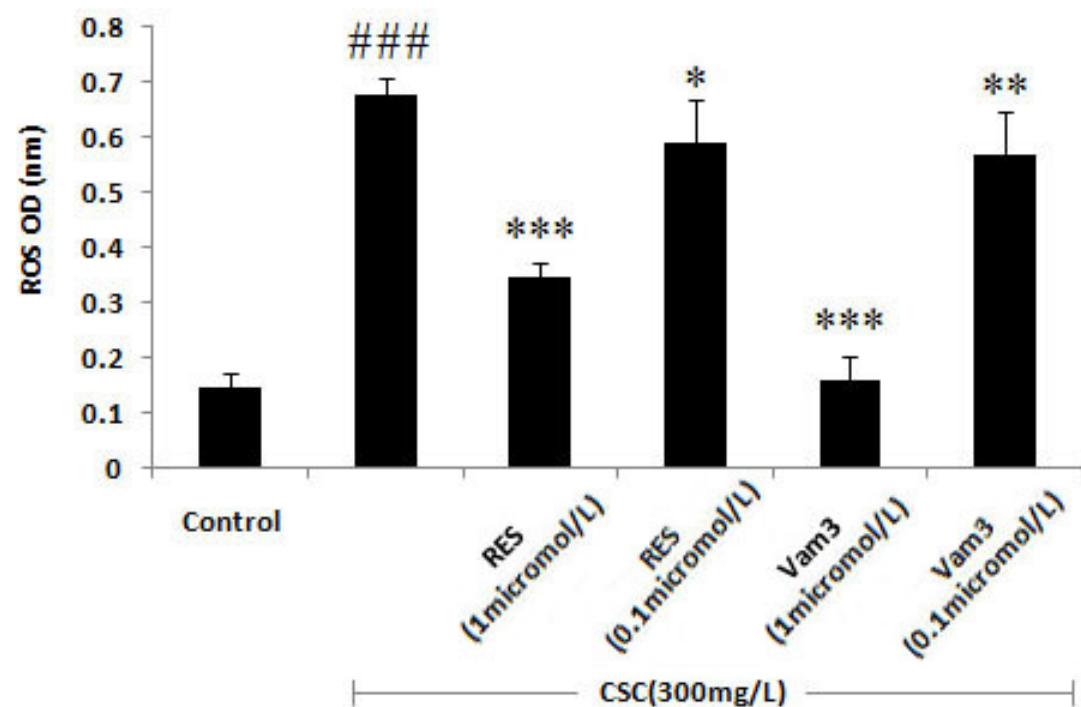
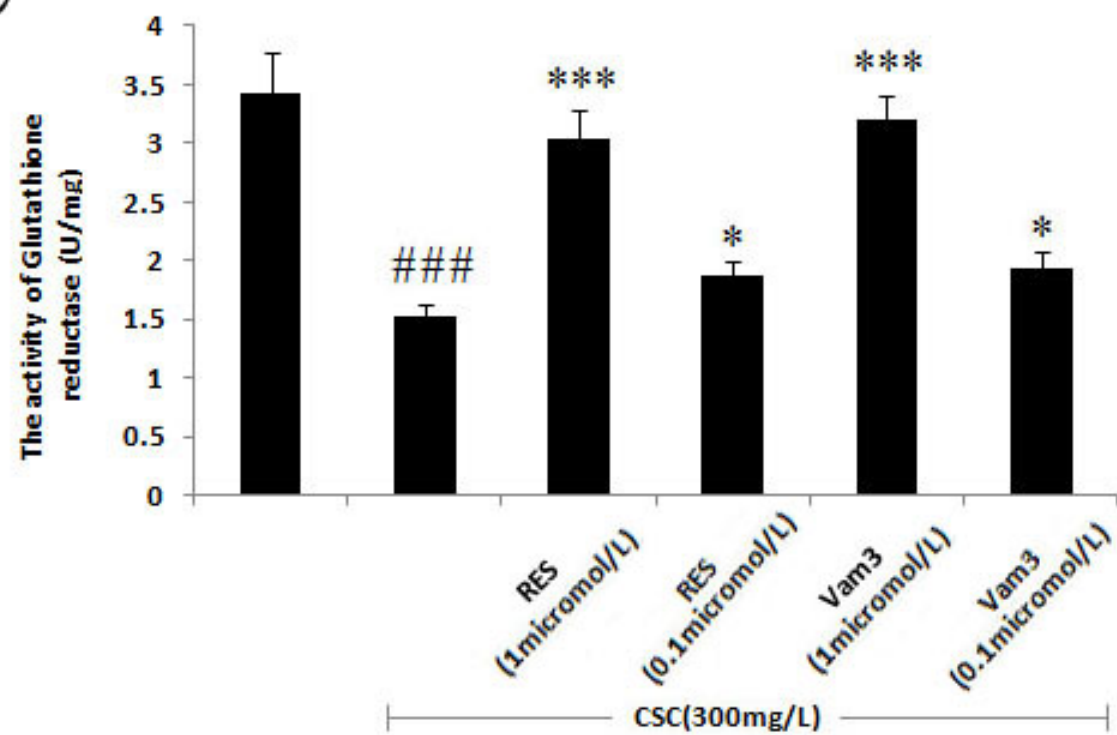
A**B****C**

Fig. A: CSC induces induction of autophagy in Beas-2B cells. Beas-2B cells were treated with CSC (300 mg/L) and/or bafilomycin A1 (0.1 μ mol/L), and followed by western blot assay with anti-LC3 and anti-p62 antibodies.

Fig. B: Vam3 reverses CS-induced intracellular ROS generation in Beas-2B cells. The level of intracellular ROS was examined after treatment with CS (300mg/L) for 12h with or without RES and Vam3 pretreatment for 2h. $^{###}P < 0.001$, compared to control; $*P < 0.05$, $**P < 0.01$, $^{***}P < 0.001$, compared to that in the absence of RES or Vam3.

Fig. C: Vam3 reverses CS-induced reduction of GSH reductase vitality in Beas-2B cells. The level of intracellular GSH reductase vitality was examined after treatment with CS (300mg/L) for 12h with or without RES and Vam3 pretreatment for 2h. $^{###}P < 0.001$, compared to control; $*P < 0.05$, $^{***}P < 0.001$, compared to that in the absence of RES or Vam3.