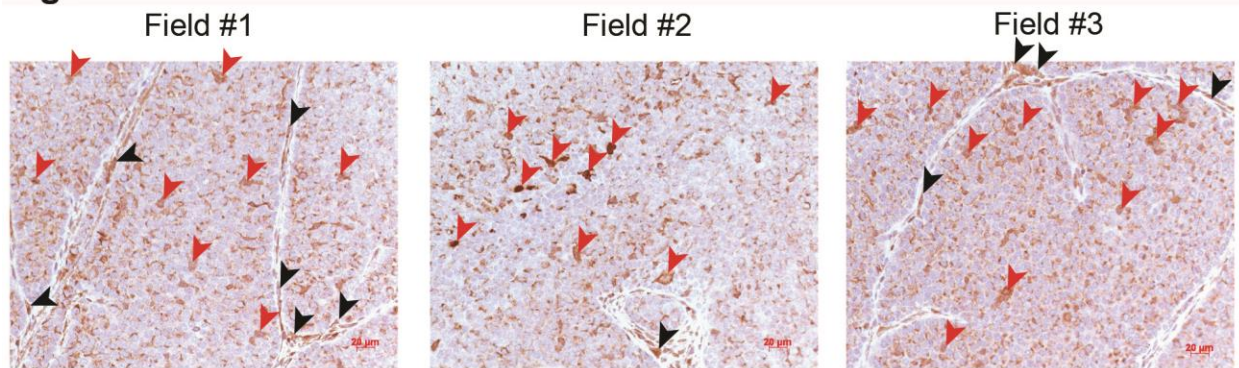


Figure S7



Supplementary information, Figure S7 PTEN loss is heterogeneous in Neu-driven, PTEN-loss mouse mammary tumors.

Immunohistochemistry for PTEN (Cell Signaling antibody #9559) was performed on sections of MMTV-NIC (*Neu* overexpressing), *PTEN*^{-/-} mouse mammary tumor tissue. Red arrows indicate examples of positively stained tumor cells; black arrows indicate positively stained stroma. Scale indicates 20 μm.