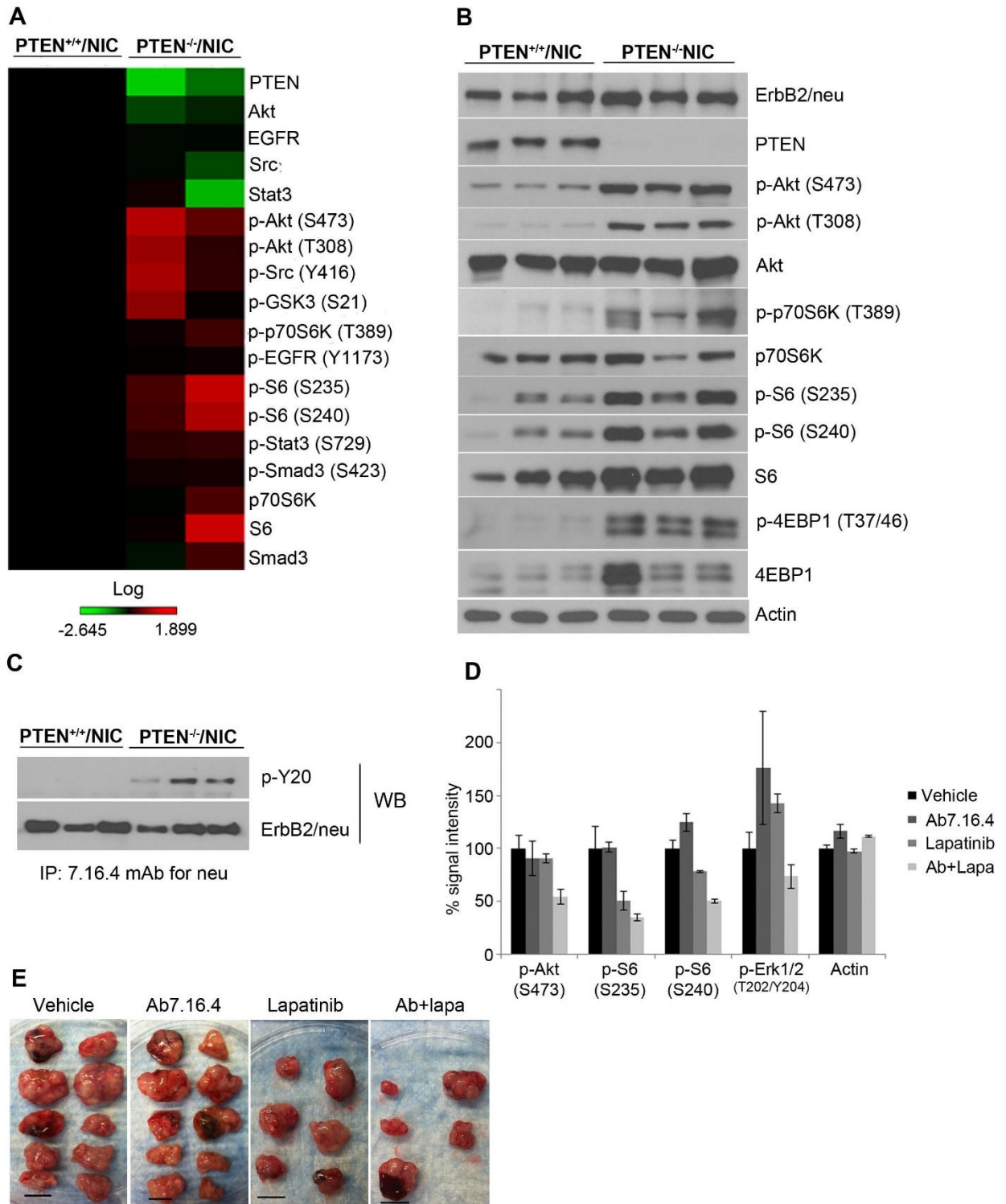


Figure S1



Supplementary information, Figure S1 PTEN loss leads to activation of ErbB2 and its downstream signaling in PTEN^{-/-}/NIC mice.

(A) Reverse phase protein array (RPPA) analysis of tumor lysates from PTEN^{+/+}/NIC versus PTEN^{-/-}/NIC mice. **(B)** Western blot validation of RPPA results for some of the key signaling pathway proteins at both

expression and phosphorylation levels. **(C)** Western blot with pan-phosphotyrosine antibody p-Y20 and ErbB2/neu antibody after immunoprecipitation of lysates from either PTEN^{+/+}/NIC or PTEN^{-/-}/NIC mice with Ab7.16.4. **(D)** Quantification of the western blot shown in Figure 1C by ImageJ software. Vehicle-treated samples are normalized to 100%. **(E)** Representative pictures of tumors from the mice treated with indicated drugs shown in Figure 1F.