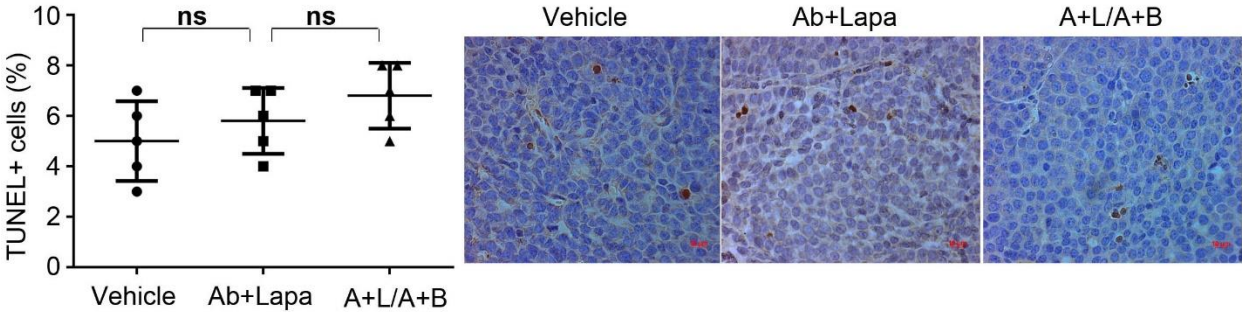


**Figure S4**



**Supplementary information, Figure S4** TUNEL staining of the tumor tissue obtained from PTEN<sup>-/-</sup>/NIC mice treated with vehicle, Ab+Lapa or sequential A+L/A+B for determination of apoptosis. *ns*: not significant ( $P>0.05$ ) by two-tailed t-test.