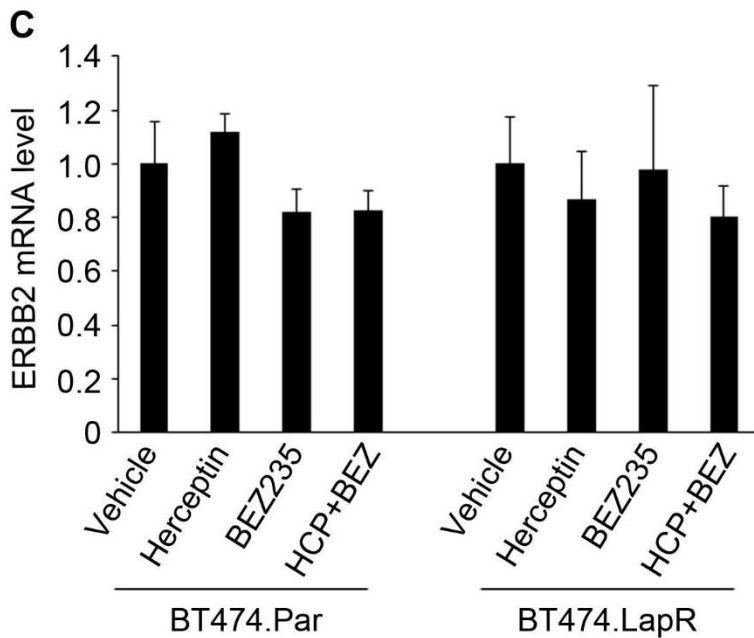
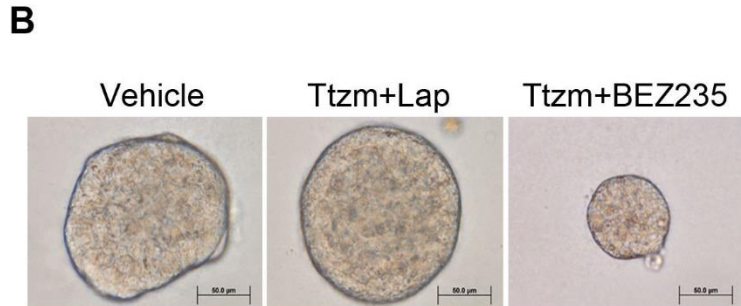
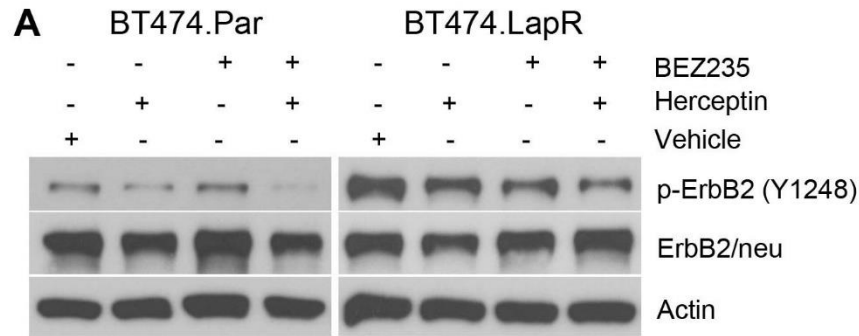


**Figure S5**



**Supplementary information, Figure S5** BEZ235 does not stabilize ErbB2 in 2-D cell culture in BT474.Par or BT474.LapR cells and does not affect ErbB2 mRNA level in 3-D culture.

**(A)** Western blot analysis of BT474.Par and BT474.LapR cells treated with BEZ235 or Herceptin plus BEZ235 in 2-D culture. Actin was used as loading control. **(B)** 3-D culture images of BT474.LapR cells treated with different drugs for a week. Scale bar indicates 50  $\mu$ m. **(C)** qRT-PCR analysis of the ErbB2 mRNA level in BT474.Par and BT474.LapR cells treated with BEZ235 or Herceptin plus BEZ23 in 3-D culture. 18S was used as housekeeping gene control.