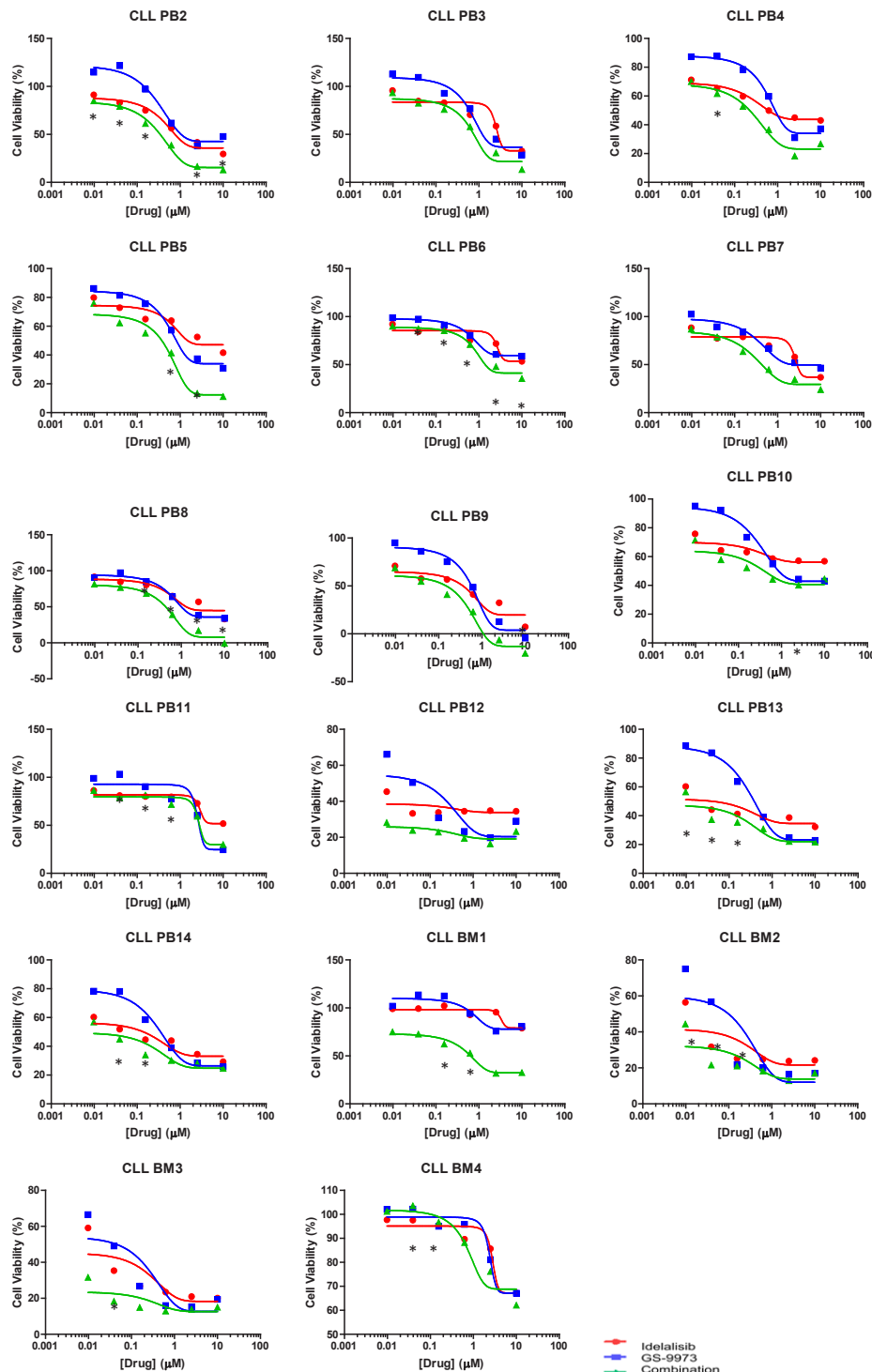


# A potential therapeutic strategy for chronic lymphocytic leukemia by combining Idelalisib and GS-9973, a novel spleen tyrosine kinase (Syk) inhibitor - Burke et al



**Supplemental Figure 1:** Ficoll purified CLL cells ( $2 \times 10^5$ ) obtained from the peripheral blood of 14 patients and the bone marrow of 4 patients were treated in triplicate with 6 concentrations (.977nM to  $10 \mu\text{M}$ ) of idelalisib, GS-9973, or equimolar concentrations of each drug in combination. Viability (y axis), determined after 72 hours of culture with drug in HS-5 conditioned media, is plotted against increasing drug concentrations (x axis). Each graph represents an individual sample. Asterisks denote synergistic concentrations as determined using the 95% confidence interval as defined by R.