

Supplementary Information

Figure S1. ^1H NMR spectrum (600 MHz) of placotylene A (**1**) in chloroform-*d*.

Figure S2. ^{13}C NMR spectrum (150 MHz) of placotylene A (**1**) in chloroform-*d*.

Figure S3. COSY spectrum (600 MHz) of placotylene A (**1**) in chloroform-*d*.

Figure S4. HSQC spectrum (600 MHz) of placotylene A (**1**) in chloroform-*d*.

Figure S5. HMBC spectrum (600 MHz) of placotylene A (**1**) in chloroform-*d*.

Figure S6. ^1H NMR spectrum (600 MHz) of placotylene B (**2**) in MeOD.

Figure S7. ^{13}C NMR spectrum (150 MHz) of placotylene B (**2**) in MeOD.

Figure S8. COSY spectrum (600 MHz) of placotylene B (**2**) in MeOD.

Figure S9. HSQC spectrum (600 MHz) of placotylene B (**2**) in MeOD.

Figure S10. HMBC spectrum (600 MHz) of placotylene B (**2**) in MeOD.

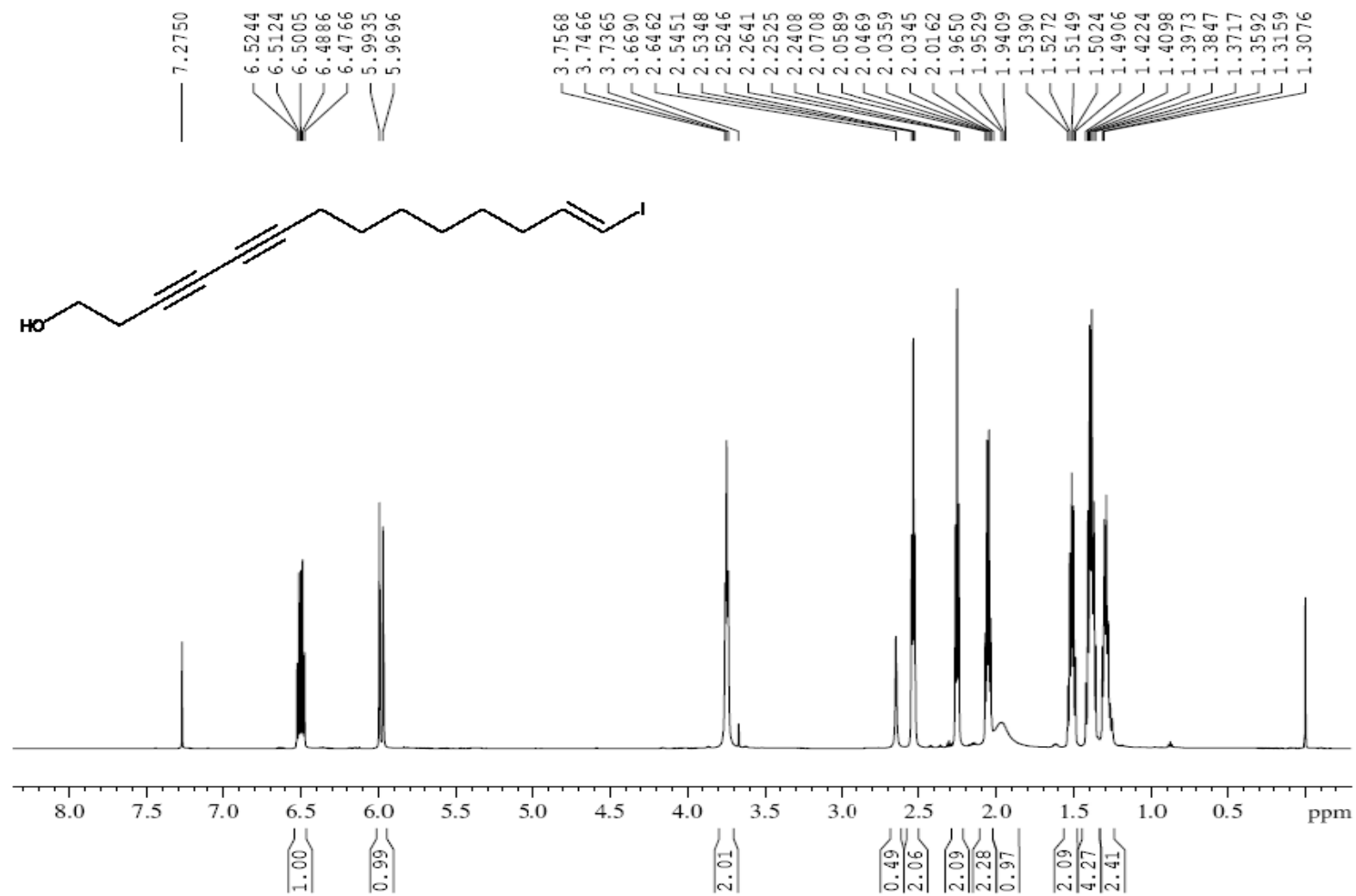
Figure S1. ^1H NMR spectrum (600 MHz) of placotylene A (1) in chloroform-*d*.

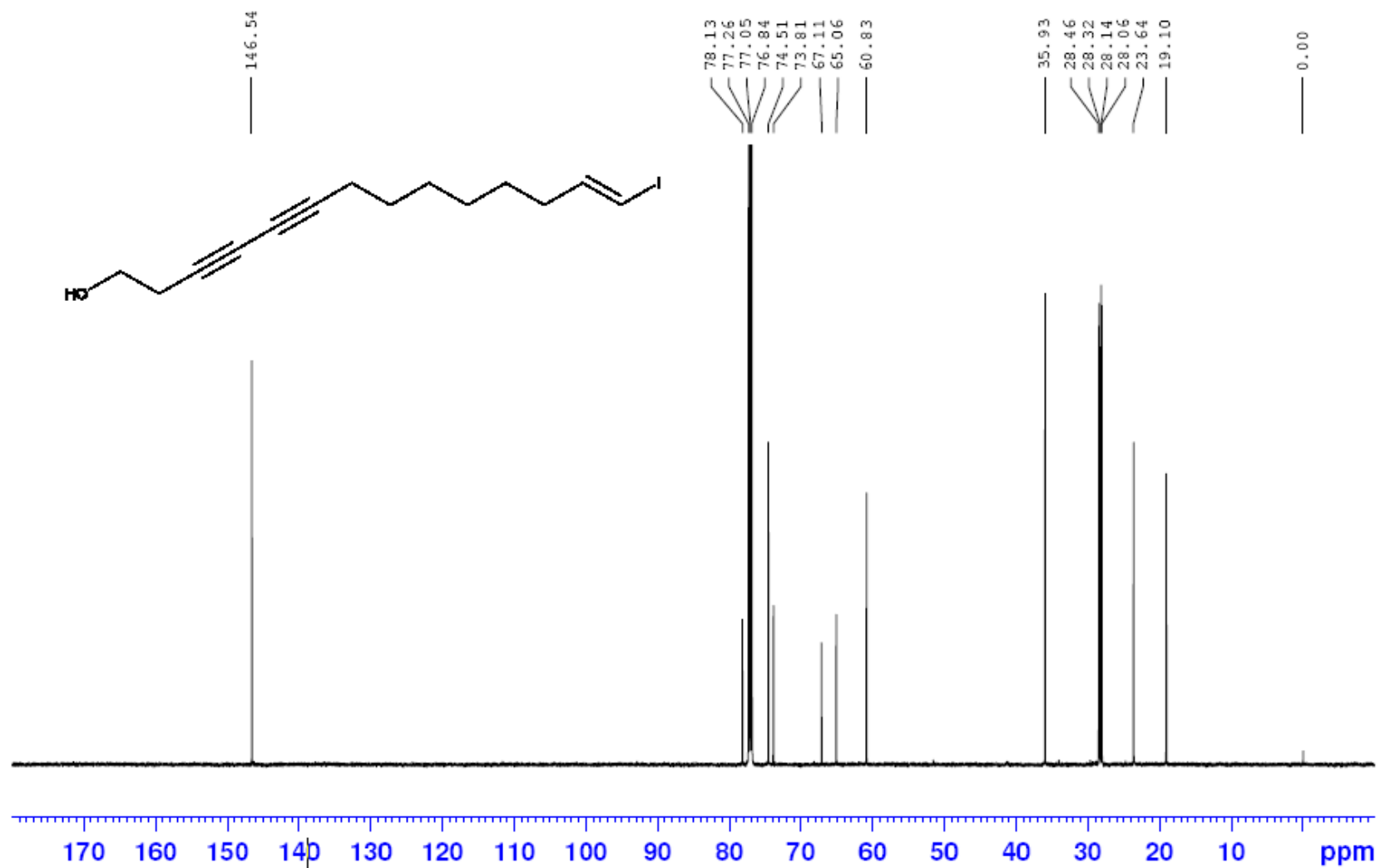
Figure S2. ^{13}C NMR spectrum (150 MHz) of placotylenine A (1) in chloroform-*d*.

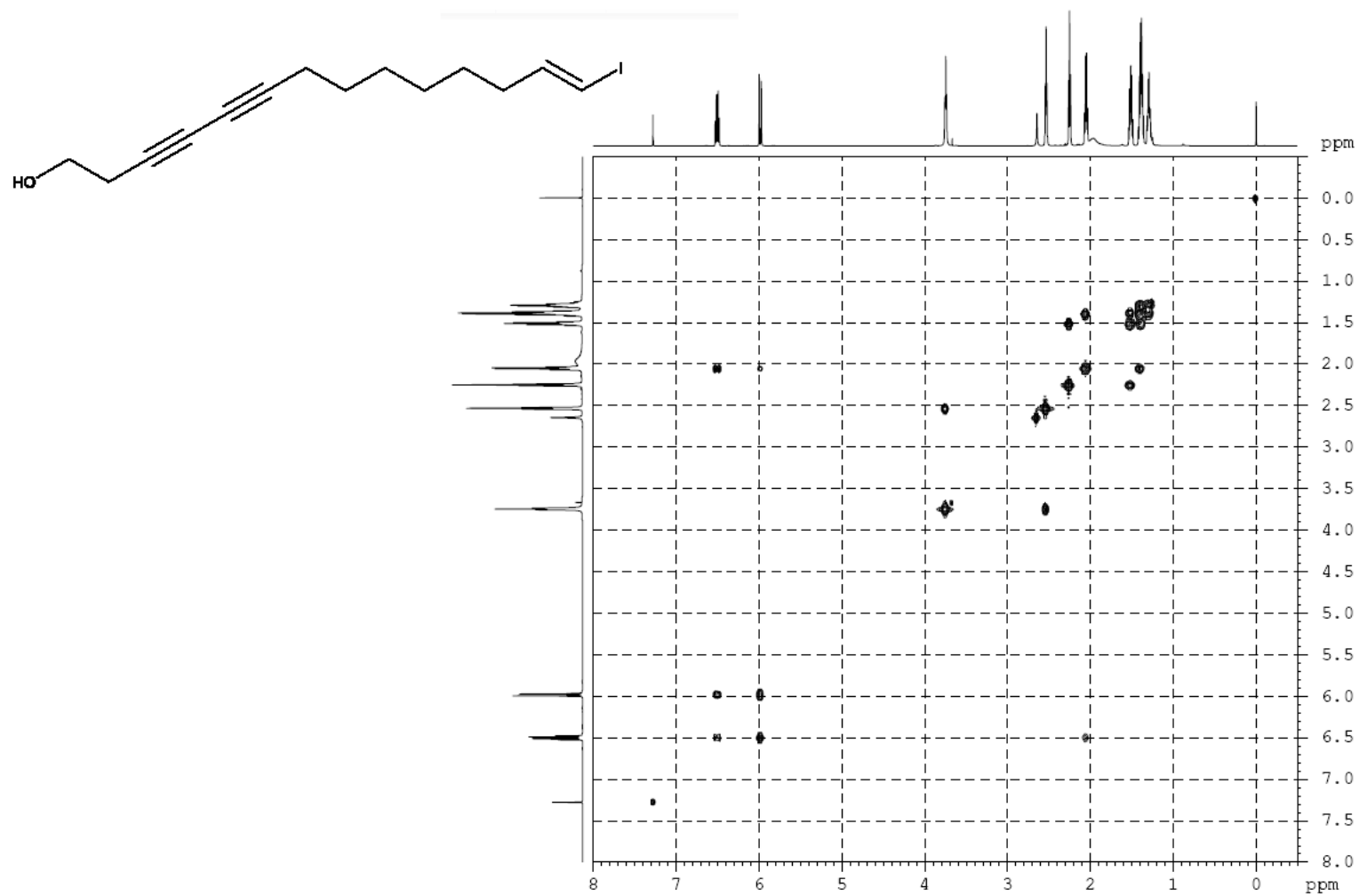
Figure S3. COSY spectrum (600 MHz) of placotylenine A (1) in chloroform-*d*.

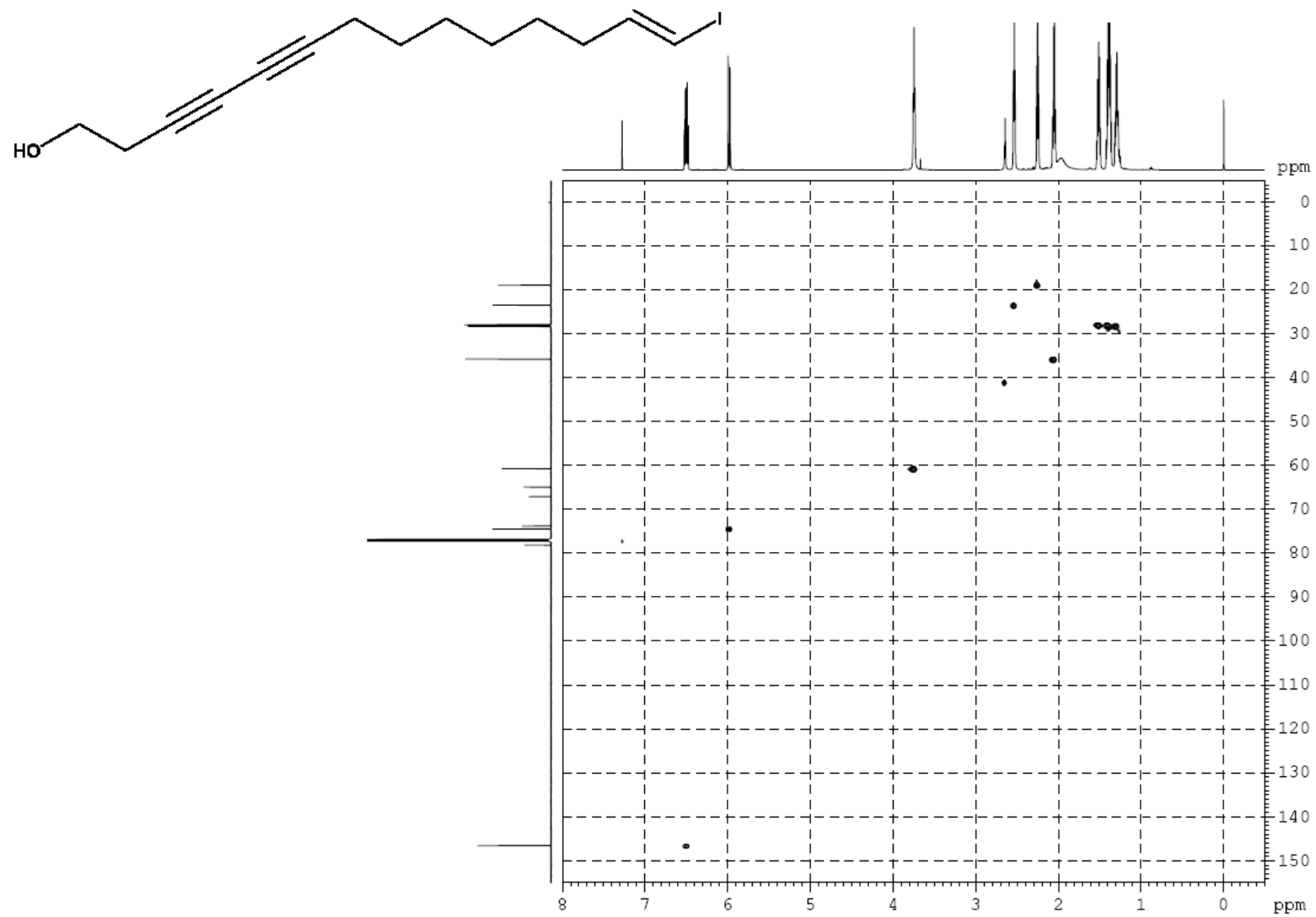
Figure S4. HSQC spectrum (600 MHz) of placotylenine A (**1**) in chloroform-*d*.

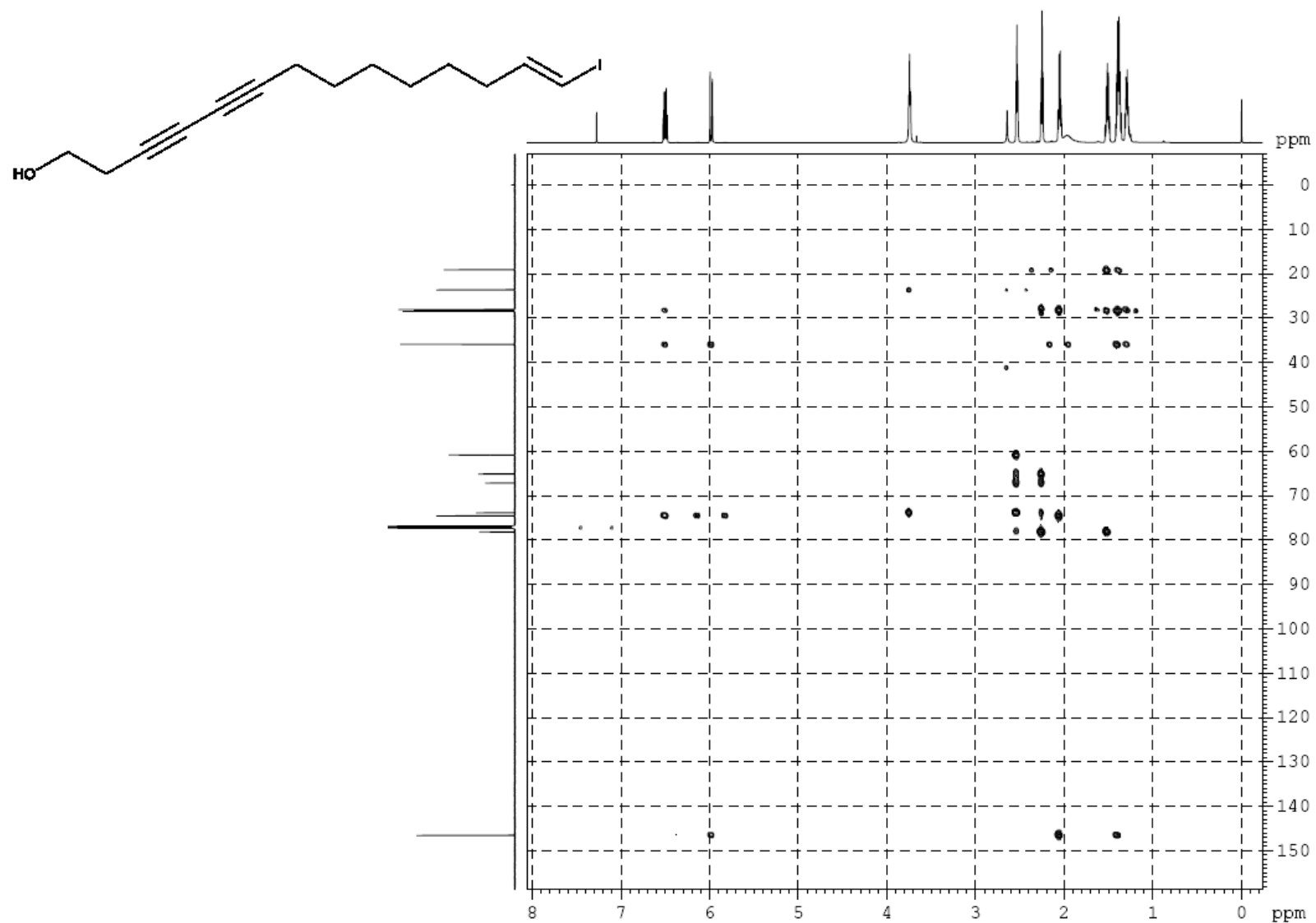
Figure S5. HMBC spectrum (600 MHz) of placotylenine A (1) in chloroform-*d*.

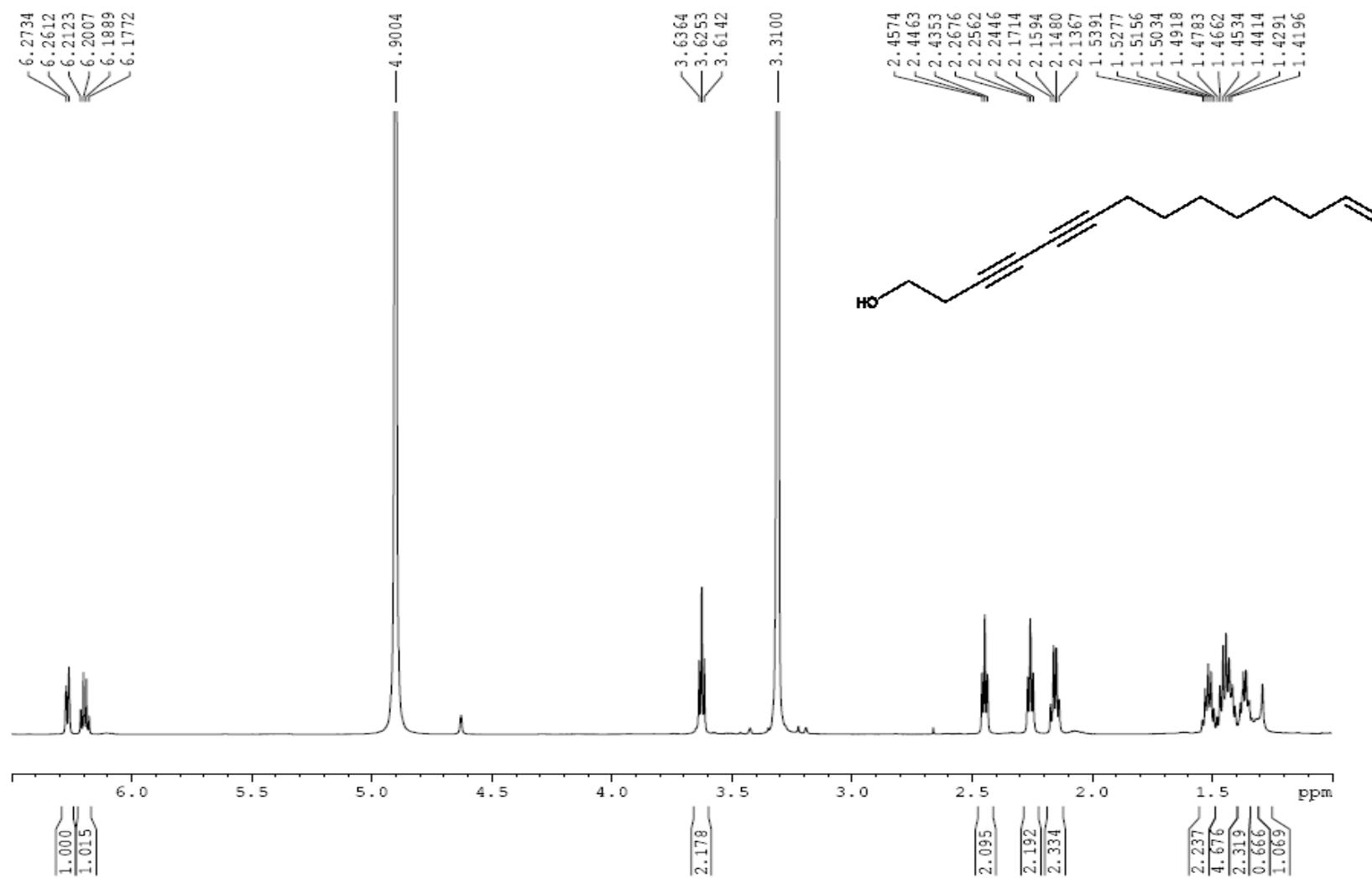
Figure S6. ^1H NMR spectrum (600 MHz) of placotylenine B (**2**) in MeOD.

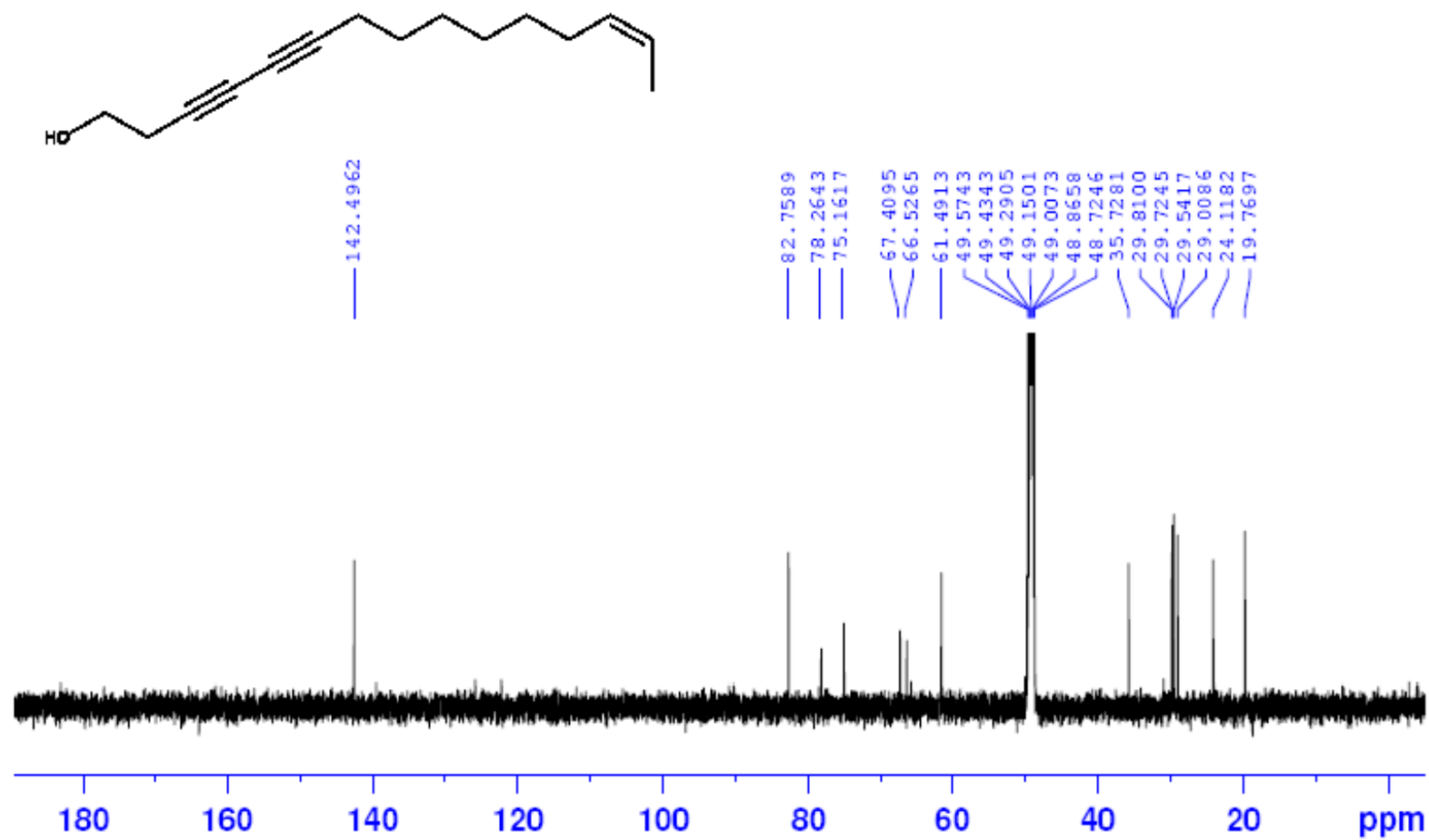
Figure S7. ^{13}C NMR spectrum (150 MHz) of placotylenine B (2) in MeOD.

Figure S8. COSY spectrum (600 MHz) of placotylenine B (2) in MeOD.

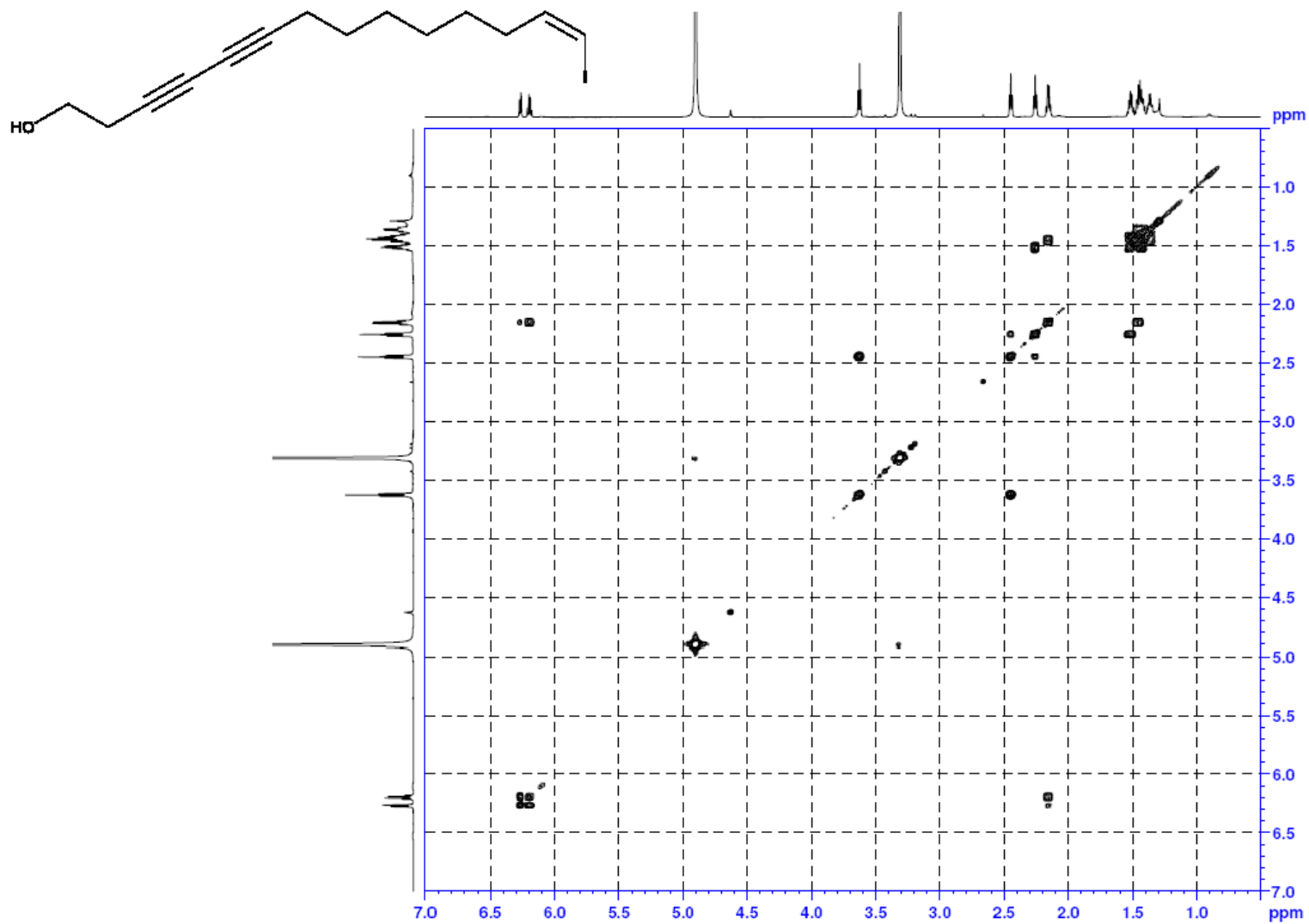


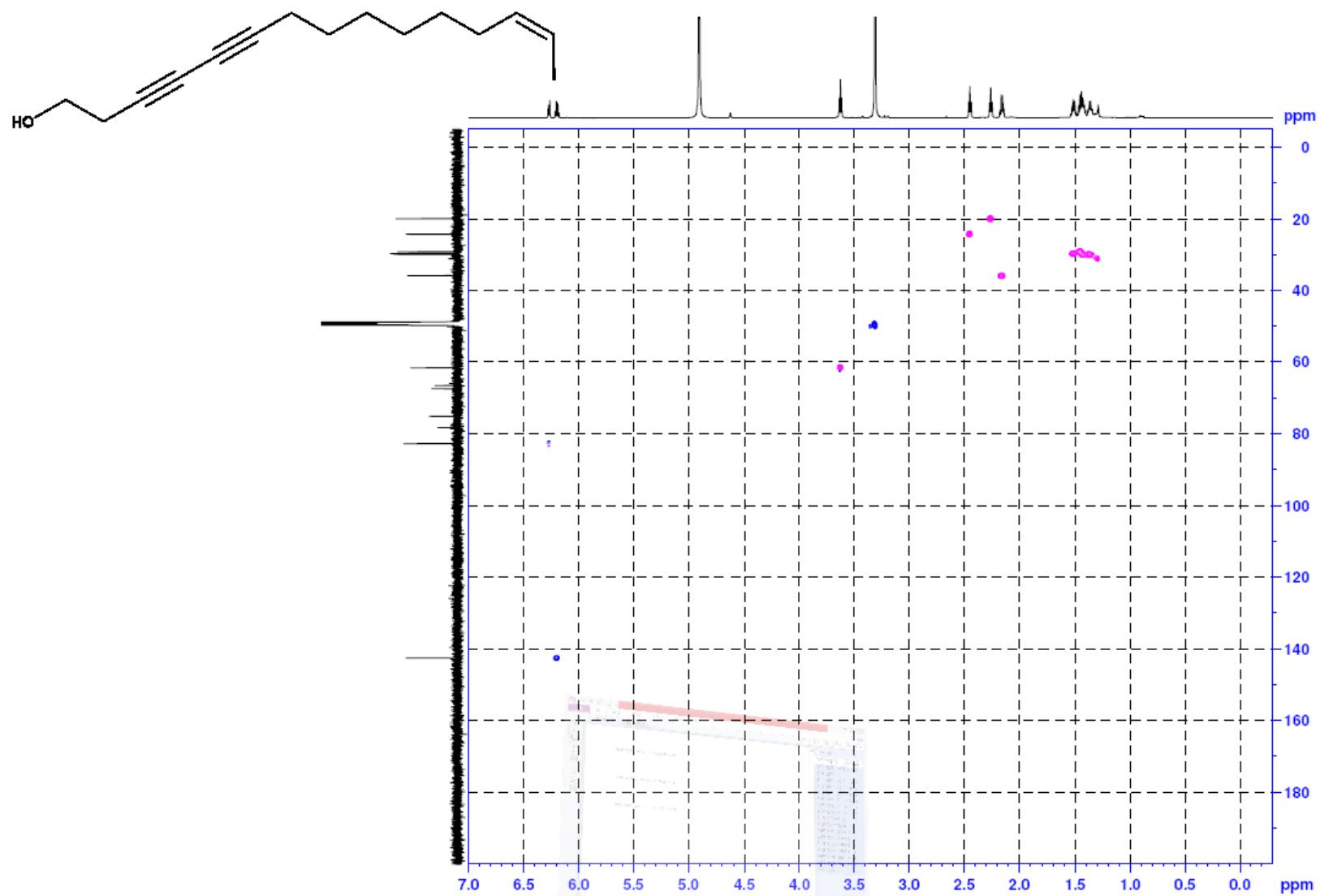
Figure S9. HSQC spectrum (600 MHz) of placotylenine B (2) in MeOD.

Figure S10. HMBC spectrum (600 MHz) of placotylenine B (2) in MeOD.