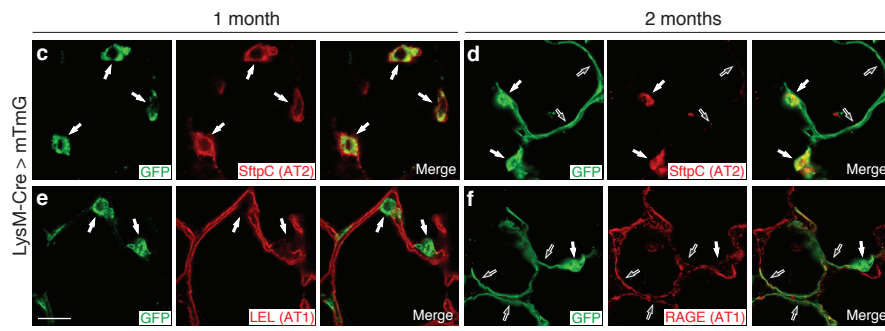
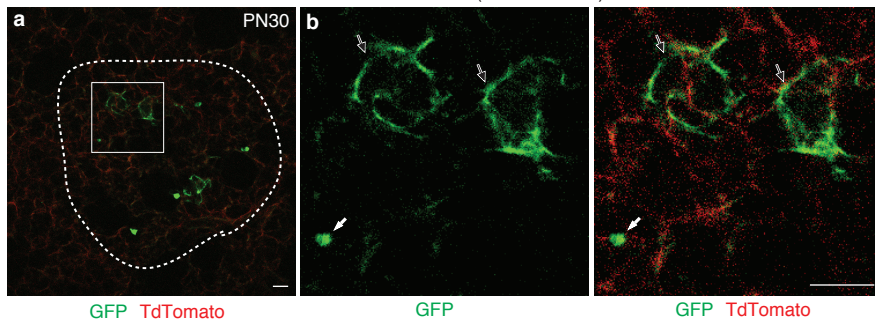
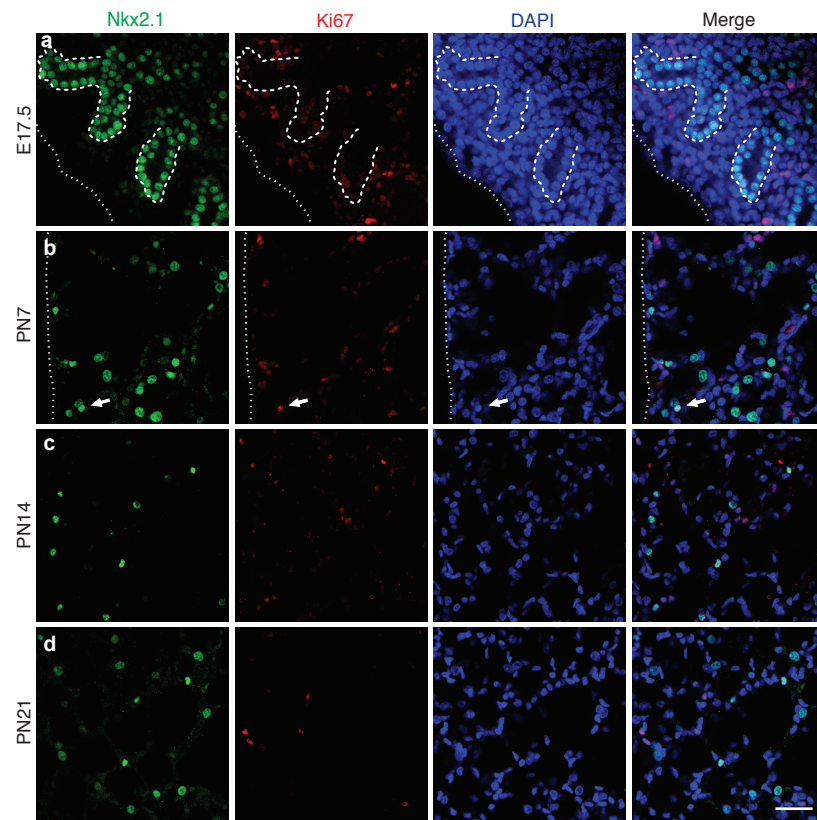
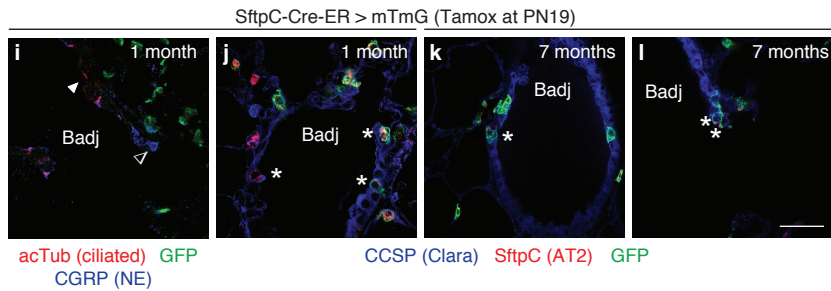
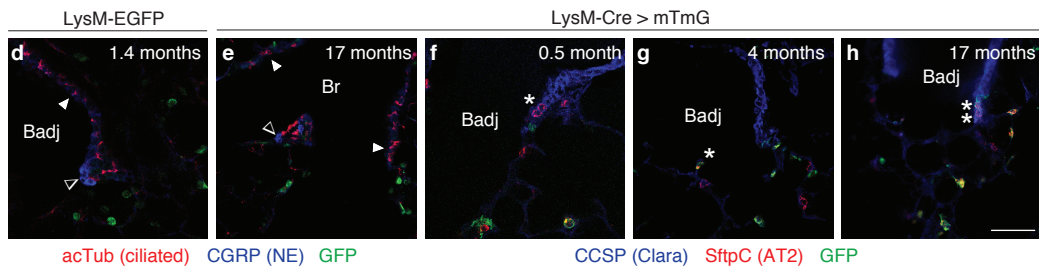
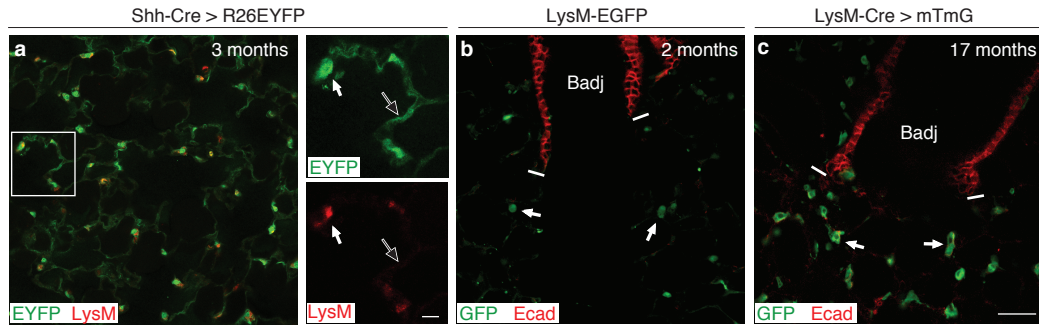


Shh-Cre-ER > mTmG (Tamox at E15)







m

Genotype, Age	Cell type (cell marker)					No. of Badj analyzed
	Ciliated (acTub)	NE (CGRP)	AT2 (SftpC)	Clara (CCSP)	Double positive (CCSP/SftpC)	
LysM-EGFP, 9d	0/850	0/29		0/400	0/4	8
LysM-EGFP, 1.4 mo	0/350	0/35		0/500	1/7 (14%)	14
LysM-EGFP, 9.5 mo	0/550	0/86		0/400	0/3	9
LysM-Cre>mTmG, 0.5 mo	0/650	1/42 (2.3%)	150/650 (23%)	0/700	0/7	19
LysM-Cre>mTmG, 4.2 mo	0/500	0/24	363/455 (80%)	0/500	*5/10 (50%)	11
LysM-Cre>mTmG, 17 mo	0/450	0/31	156/236 (66%)	*40/900 (4.4%)	*17/43 (40%)	13
SftpC-CreER>mTmG, 1 mo (1 mg Tamox + 13d)	0/550	0/51	554/588 (94%)	0/500	*4/7 (57%)	11
SftpC-CreER>mTmG, 7 mo (1 mg Tamox + 192d)	0/900	1/47 (2.1%)	499/514 (97%)	*8/900 (0.9%)	*9/11 (82%)	22

* >90% of the marked cells were solitary and almost all others were doublets. The largest observed cell clusters were 3 (CCSP⁺/SftpC⁺) and 5 (CCSP⁺) cells.

SftpC-Cre-ER > mTmG (Tamox at PN18)

