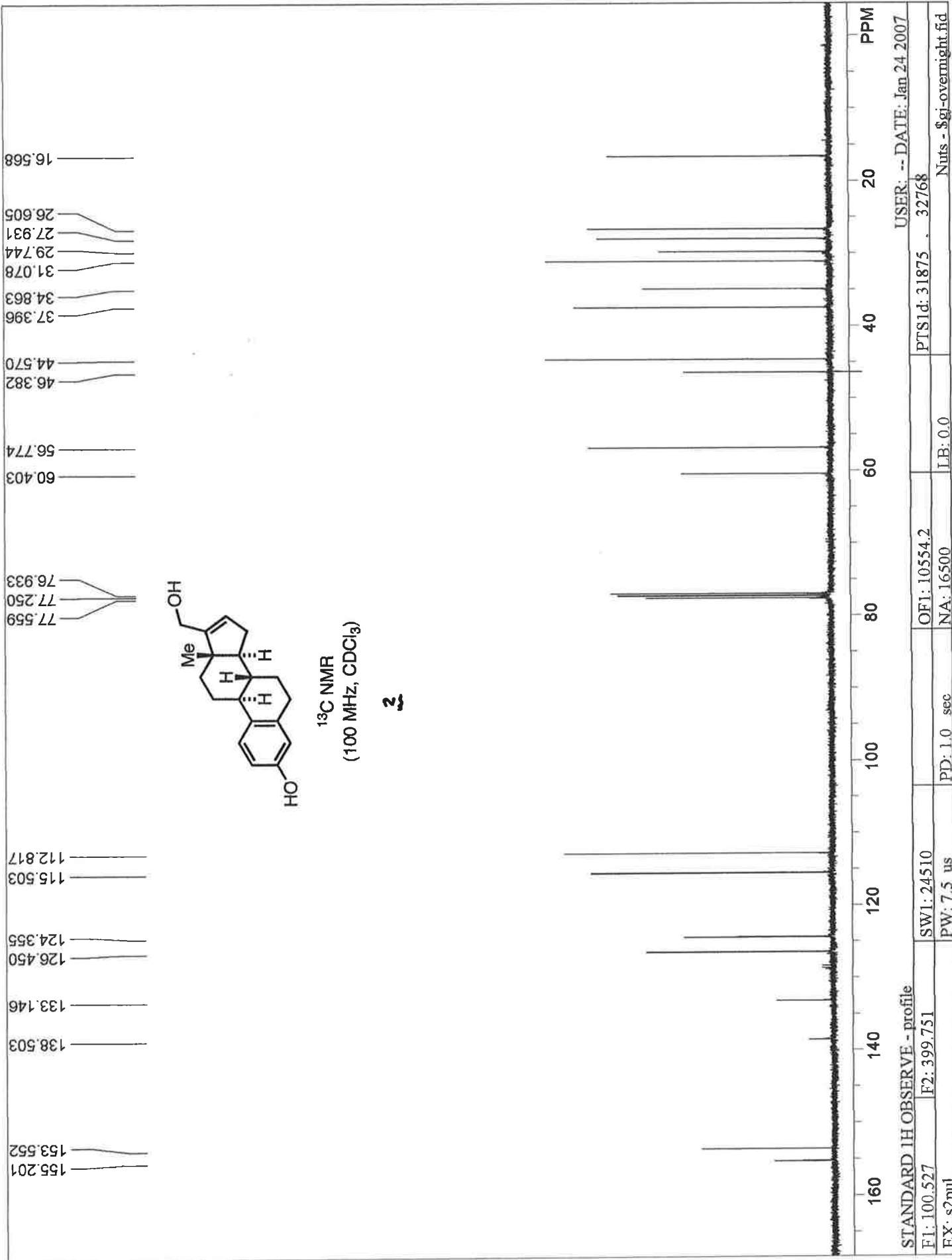


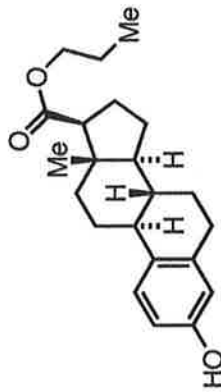
STANDARD 1H OBSERVE - profile

USER: -- DATE: Jan 24 2007

F1: 399.751	SW1: 6410	OF1: 2403.1	PTSId: 13132	16384
EX: s2pul	PW: 7.7 us	PD: 1.0 sec	NA: 8	LB: 0.0
				Nuts - \$gi-final.fid

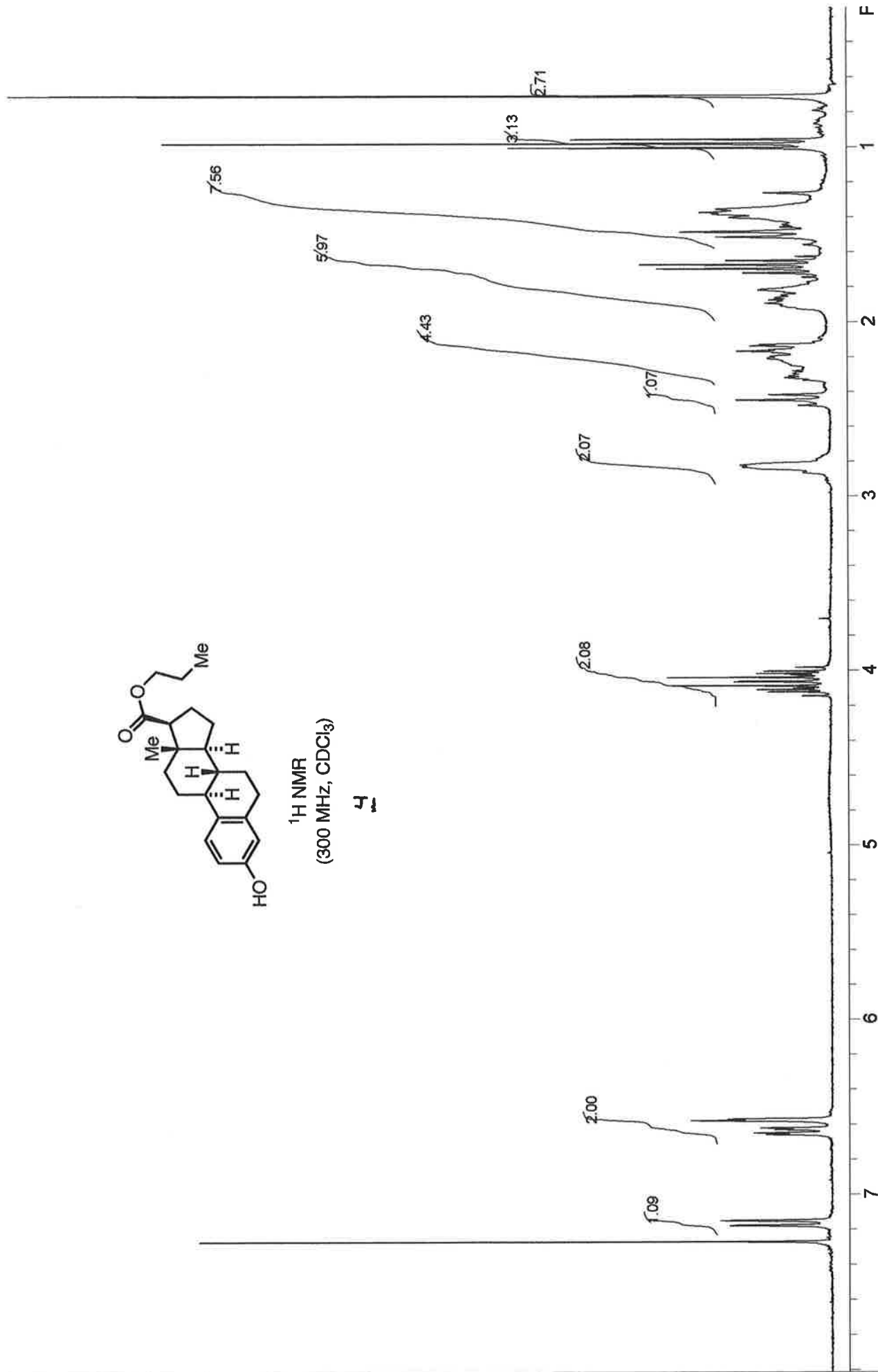


STANDARD 1H OBSERVE - profile
 F1: 100.527 F2: 399.751 SW1: 24510 OF1: 10554.2
 EX: s2pul PW: 7.5 us PD: 1.0 sec NA: 16500 LB: 0.0
 PTS1d: 31875 . 32768
 USER: -- DATE: Jan 24 2007
 Nuts - \$gi-overnight.fid

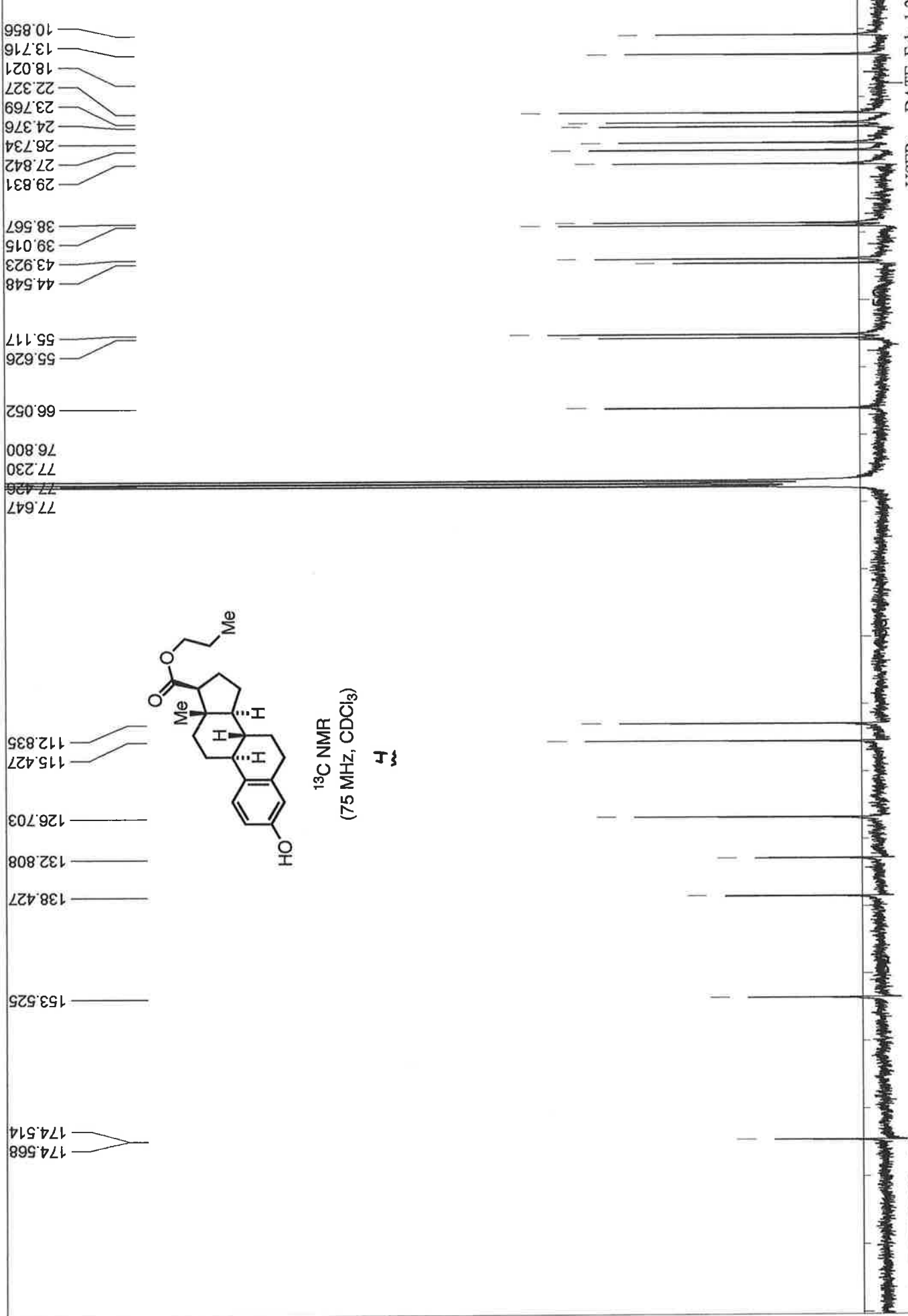


¹H NMR
(300 MHz, CDCl₃)

4



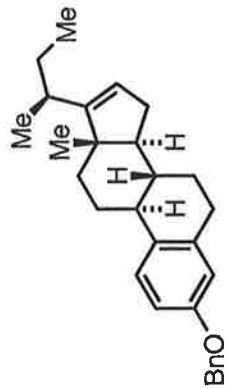
STANDARD 1H OBSERVE: blank line
 F1: 300.142 F2: 75.478 SW1: 4803
 EX: s2pul PW: 6.3 us PD: 1.0 sec OF1: 1803.7 NA: 8
 USER: -- DATE: Feb 24 2009 PTS1d: 14409 16384 LB: 0.0 Nuts - SCH-Raney-Nickel-Test



13C.OBSERVE:blank line
 F1: 75.479 F2: 300.142
 EX: s2pul

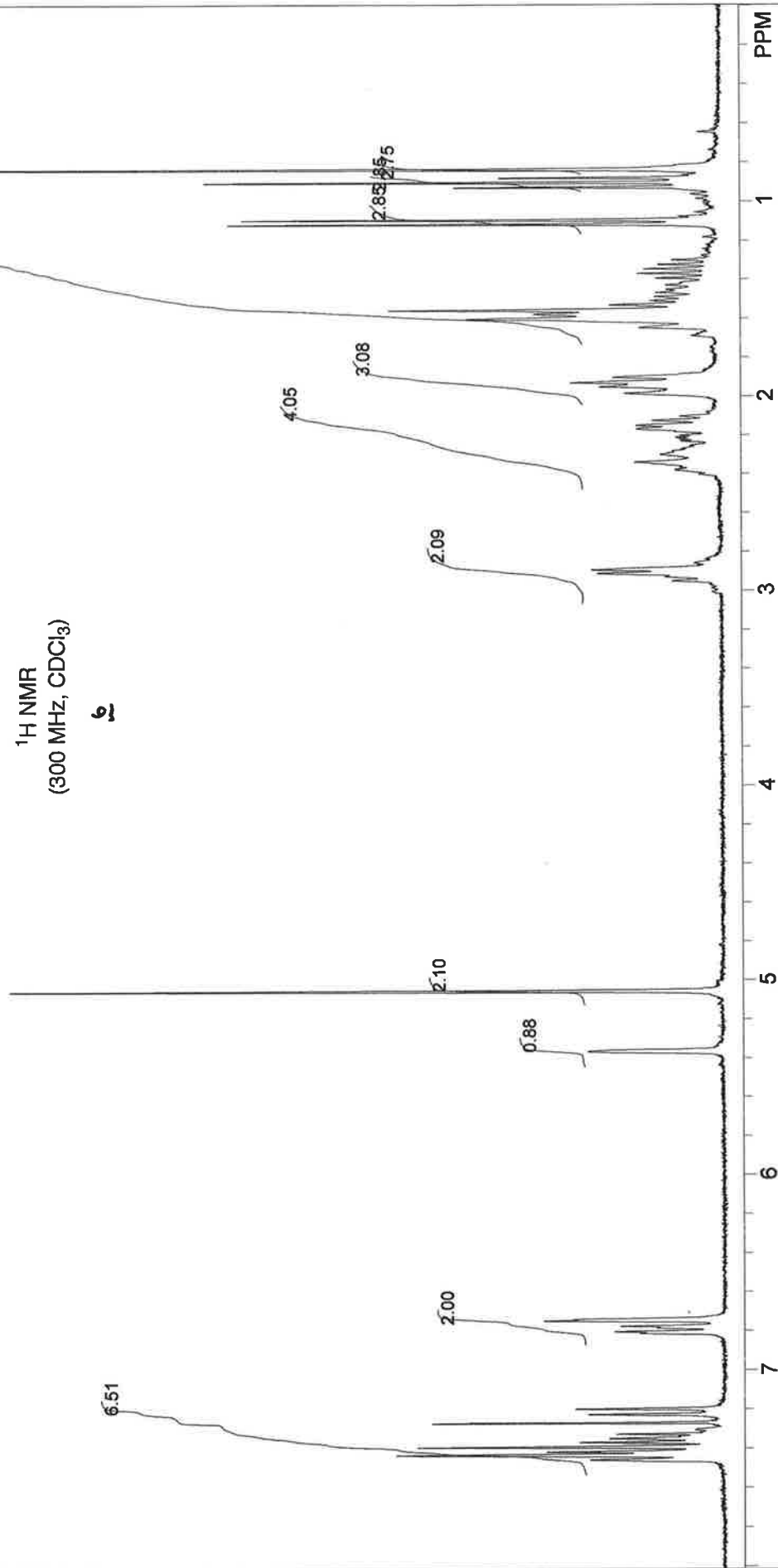
OF1: 8291.9	PTS1d: 18868	DATE: Feb 1 20
PD: 1.0 sec	LB: 1.5	32768
PW: 7.3 us		
		USER: --

Nuts - Sch-r-13c-2

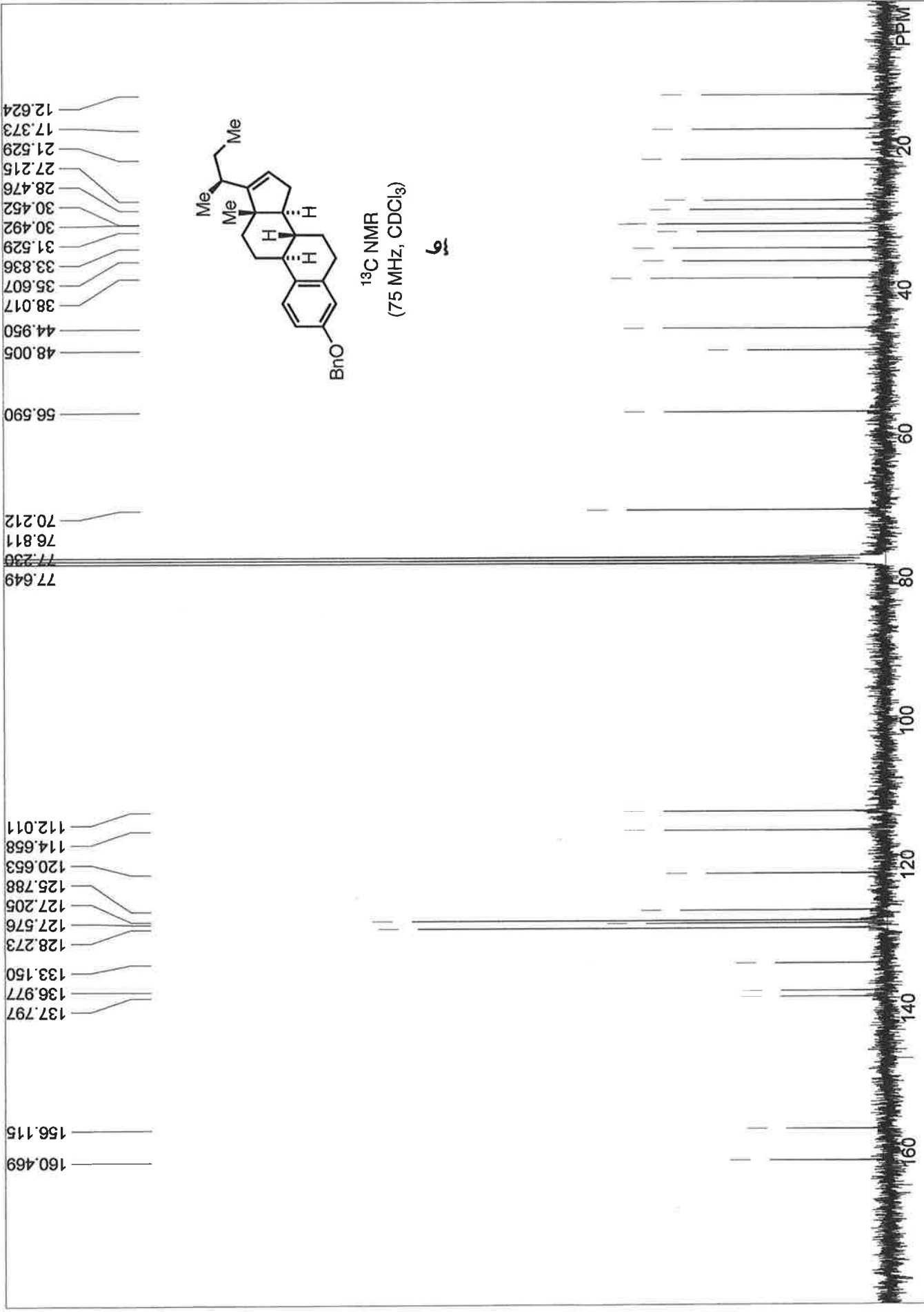


¹H NMR
(300 MHz, CDCl₃)

6

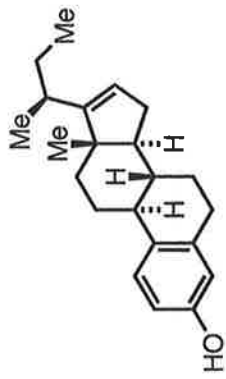


STANDARD 1H OBSERVE: blank line		USER: -- DATE: Oct 3 2002	
F1: 300.151	F2: 75.480	PTS1d: 14430	16384
EX: s2pul	PD: 1.0 sec	LB: 0.0	Nuts - \$zhep217.fid
SW1: 4810	OF1: 1806.5		
PW: 6.0 us	NA: 8		



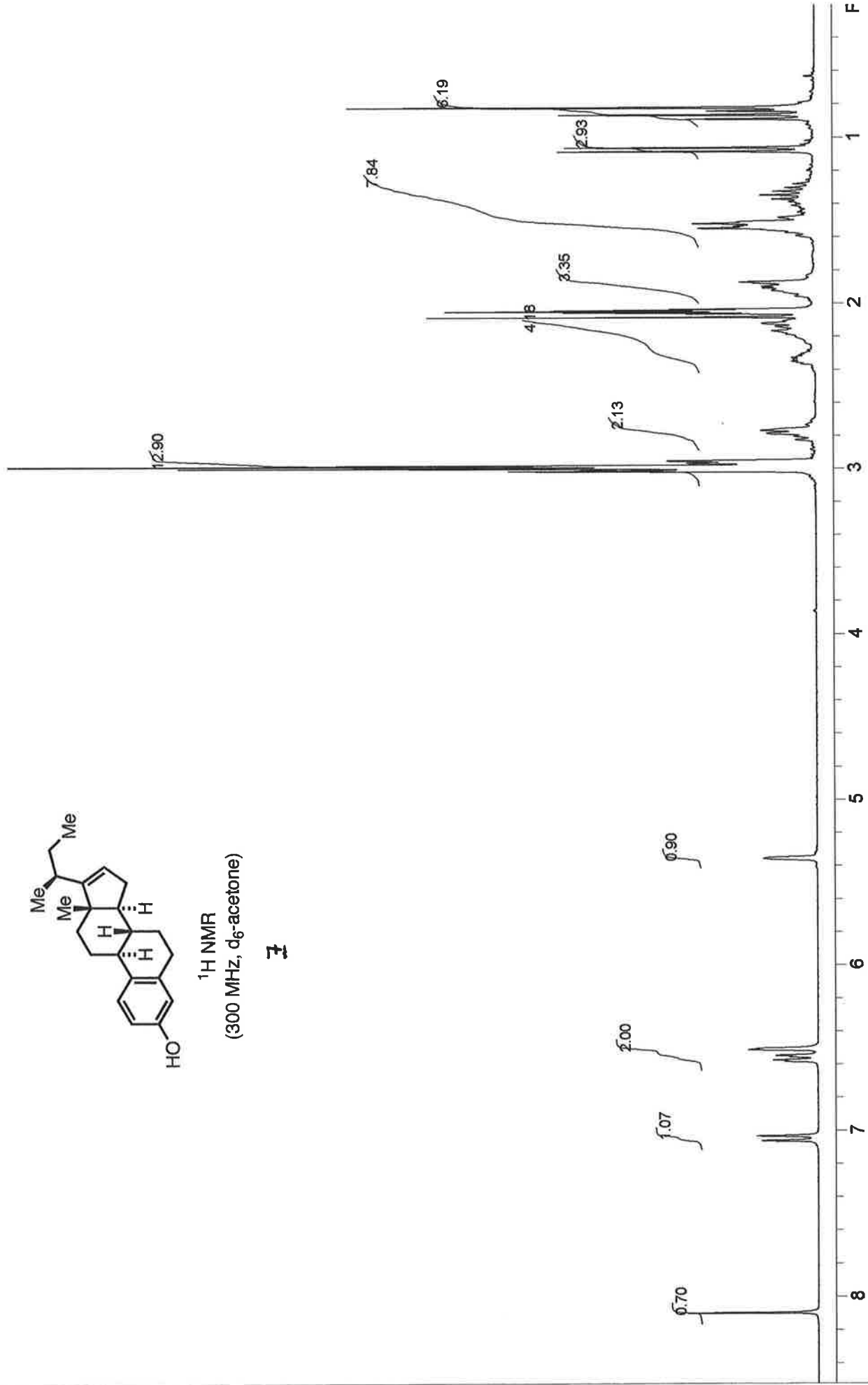
- 160.469
- 156.115
- 137.797
- 136.977
- 133.150
- 128.273
- 127.576
- 127.205
- 125.788
- 120.653
- 114.658
- 112.011
- 77.649
- 77.230
- 76.811
- 70.212
- 56.590
- 48.005
- 44.950
- 38.017
- 35.607
- 33.836
- 31.529
- 30.492
- 30.452
- 28.476
- 27.215
- 21.529
- 17.373
- 12.624

:blank line		USER: -- DATE: Oct 3 2002	
F1: 75.481	F2: 300.150	PTS1d: 18868	32768
EX: s2pul		LB: 1.0	Nuts - \$CARBON.fid
	SW1: 18868	OF1: 8277.1	
	PW: 7.3 us	NA: 5000	
	PD: 1.0 sec		

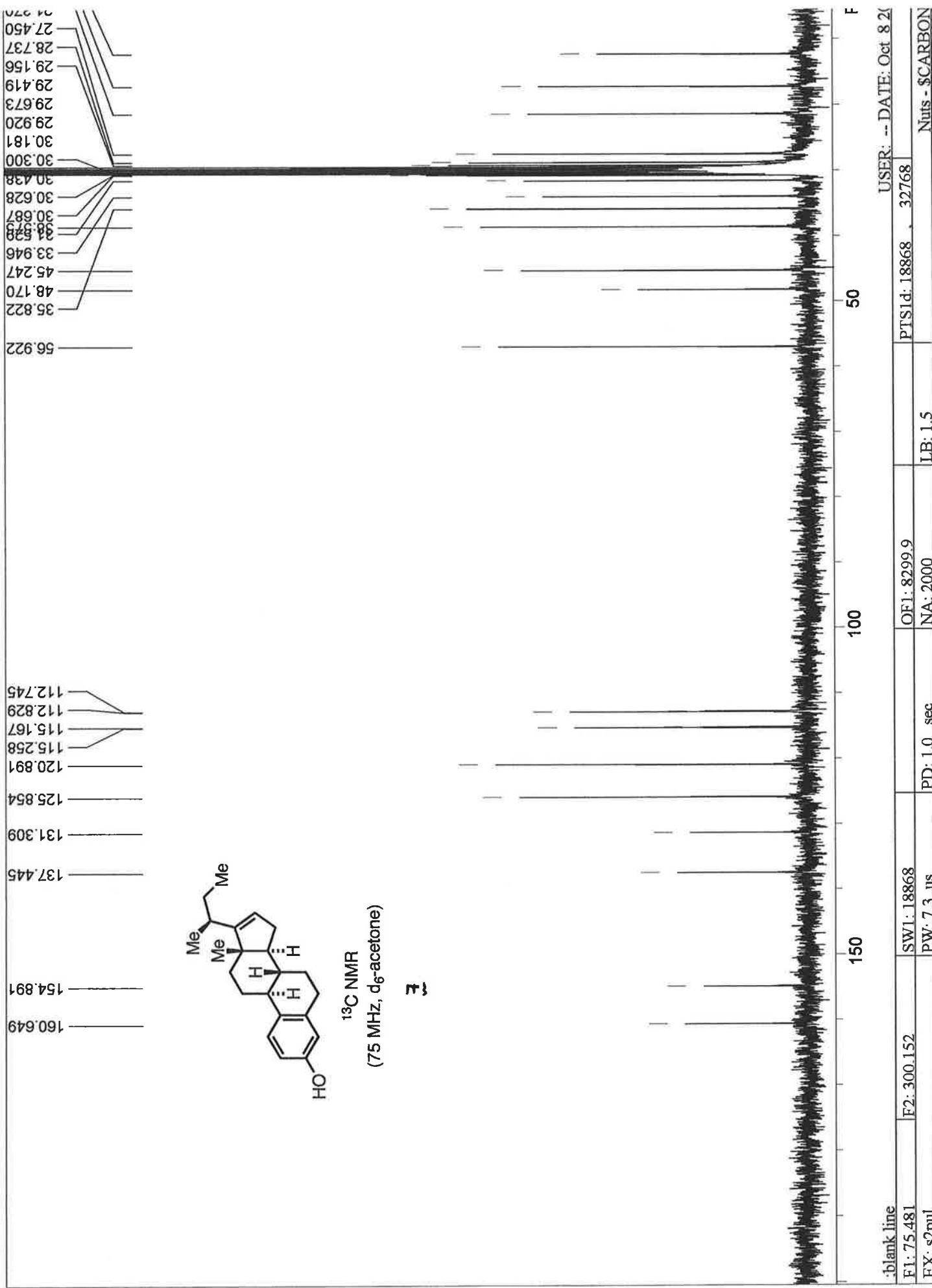


¹H NMR
(300 MHz, d₆-acetone)

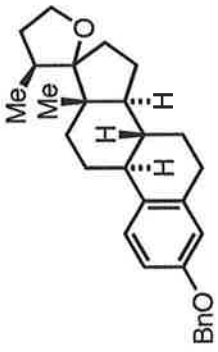
7



STANDARD 1H OBSERVE: blank line
 F1: 300.152 F2: 75.480 SW1: 4810
 EX: s2pul PW: 6.0 us PD: 1.0 sec OF1: 1795.3 NA: 8
 PTS1d: 14430 16384 LB: 0.0
 USER: -- DATE: Oct. 8 20 Nuts - \$zhep218

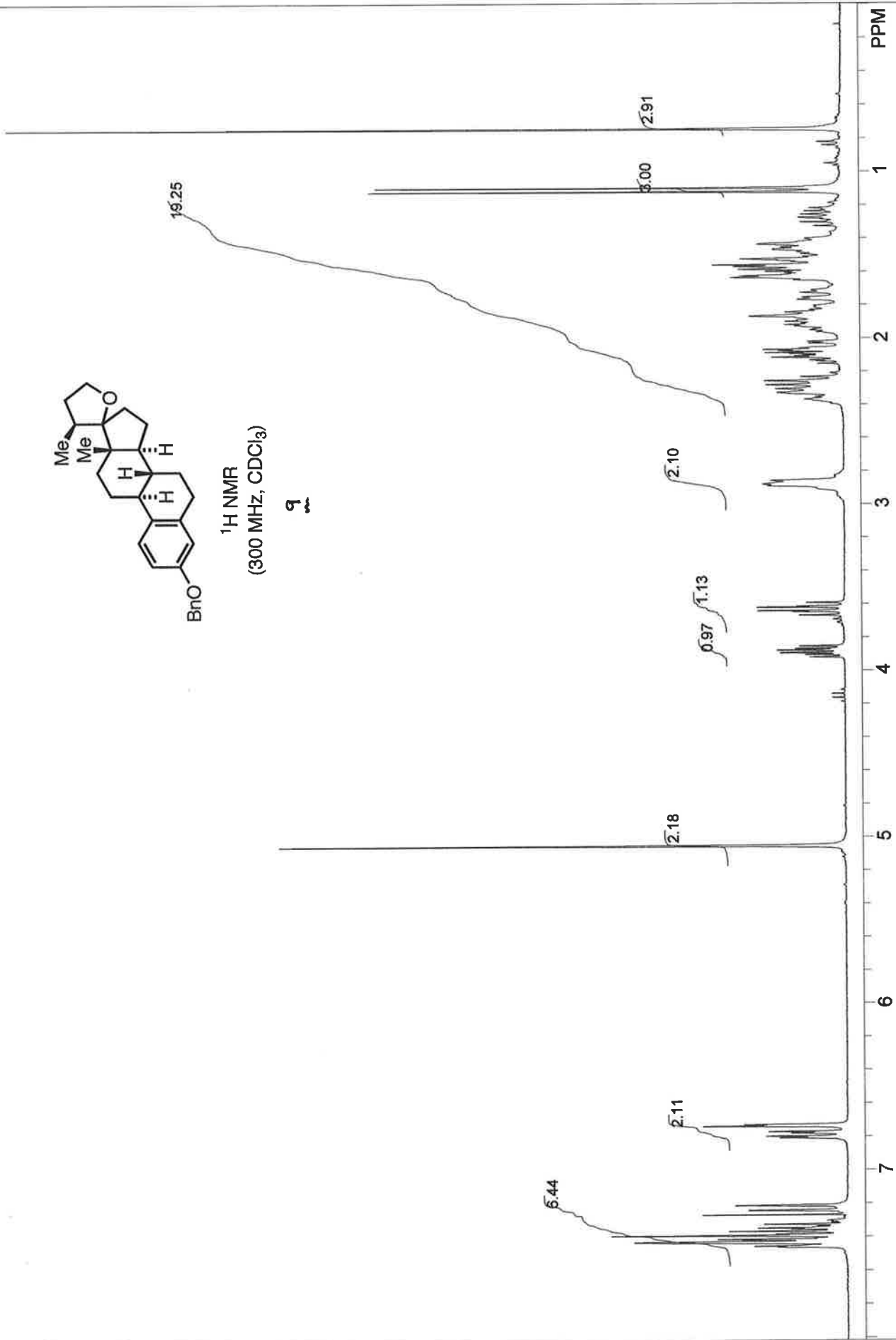


.blank line		USER: -- DATE: Oct 8 21	
F1: 75.481	F2: 300.152	PTSId: 18868	32768
EX: s2pul		LB: 1.5	Nbits - \$CARBON
		OF1: 8299.9	
		NA: 2000	
		PD: 1.0 sec	
		PW: 7.3 us	
		SW1: 18868	



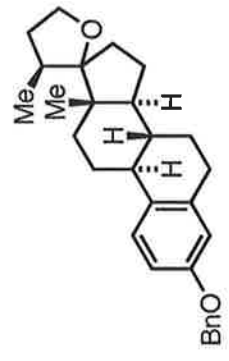
¹H NMR
(300 MHz, CDCl₃)

9



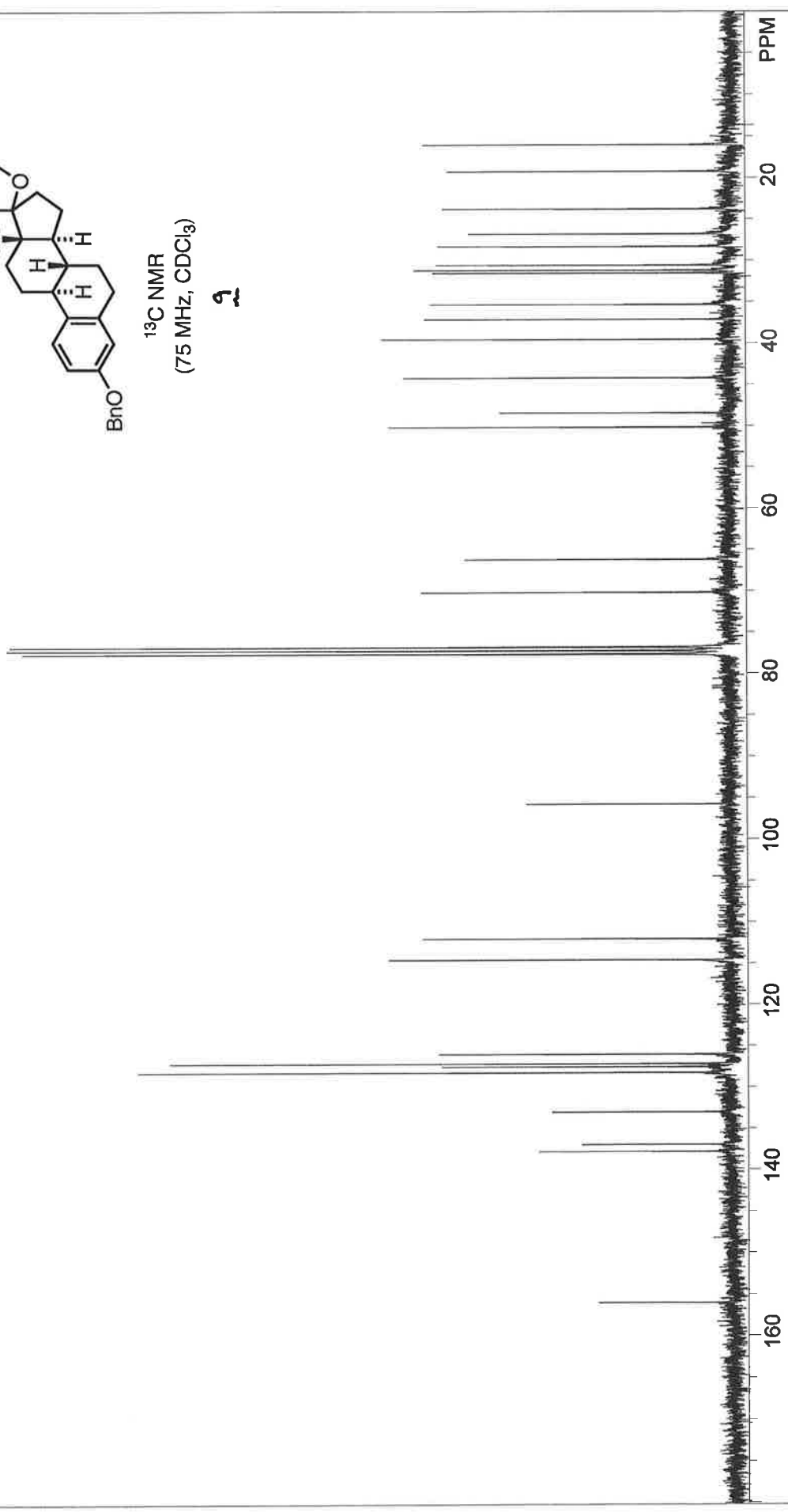
STANDARD 1H OBSERVE: blank line		USER: -- DATE: Aug 7 2002	
F1: 300.151	F2: 75.480	PTS1d: 14430	16384
EX: s2pul	PW: 6.0 us	LB: 0.0	Nuts - \$zhcp194d.fid
	PD: 1.0 sec	NA: 8	
	OF1: 1806.9		

156.071
 137.852
 136.978
 133.045
 128.245
 127.550
 126.035
 114.590
 112.032
 95.765
 77.649
 77.230
 76.811
 70.192
 66.195
 50.186
 48.433
 44.211
 39.565
 37.131
 35.318
 31.527
 31.195
 30.574
 28.326
 26.794
 23.783
 19.257
 16.043

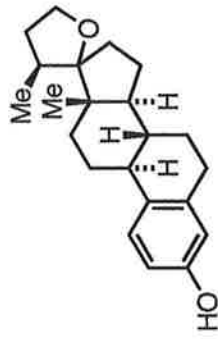


¹³C NMR
 (75 MHz, CDCl₃)

2

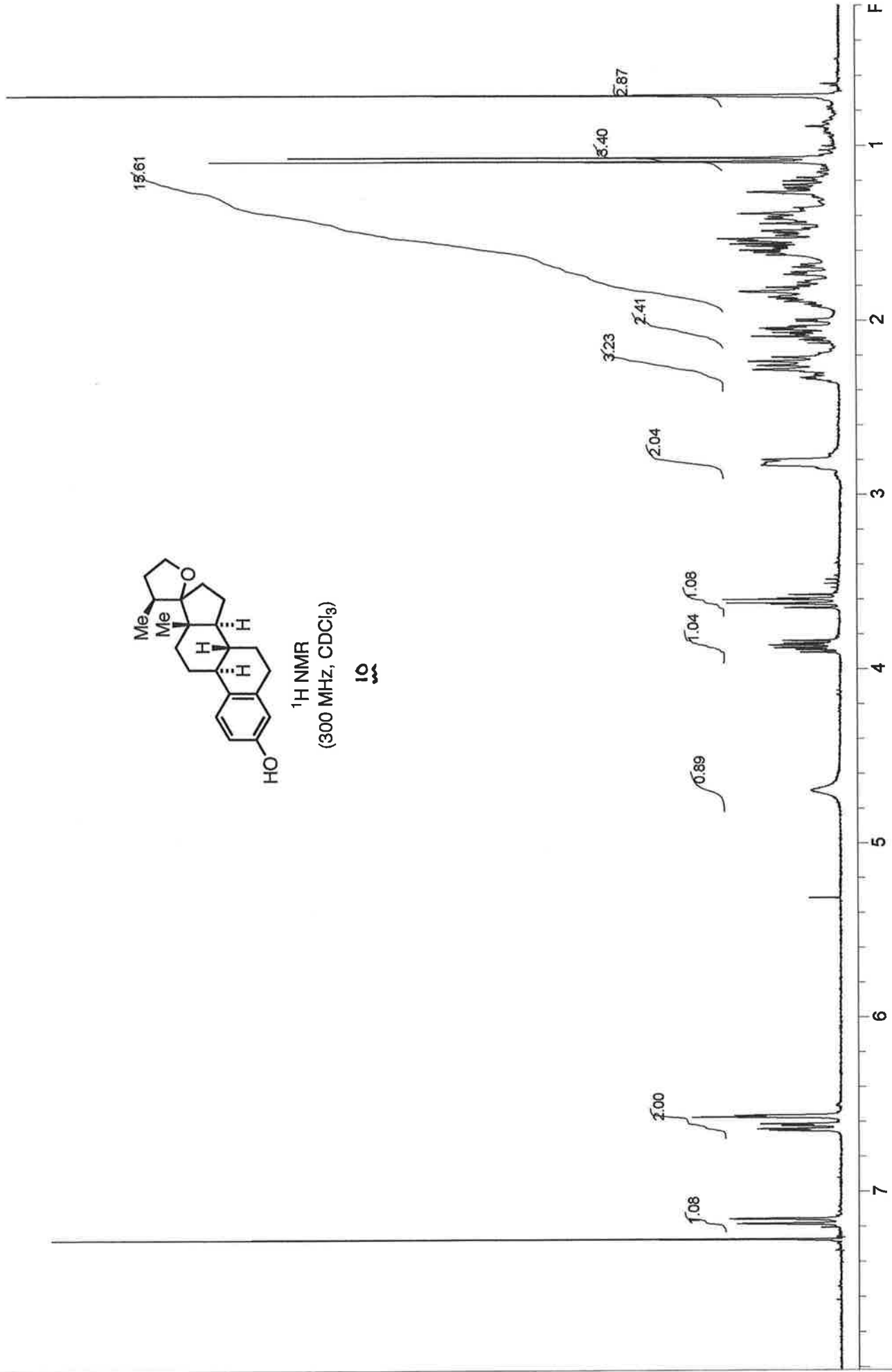


:blank line		USER: -- DATE: Aug 7 2002	
F1: 75.481	F2: 300.150	PTS1d: 18868	32768
EX: s2pul		Nuts - \$CARBON.fid	
		OF1: 8275.9	LB: 1.0
		NA: 2000	
		PD: 1.0 sec	
		PW: 7.3 us	
		SW1: 18868	



¹H NMR
(300 MHz, CDCl₃)

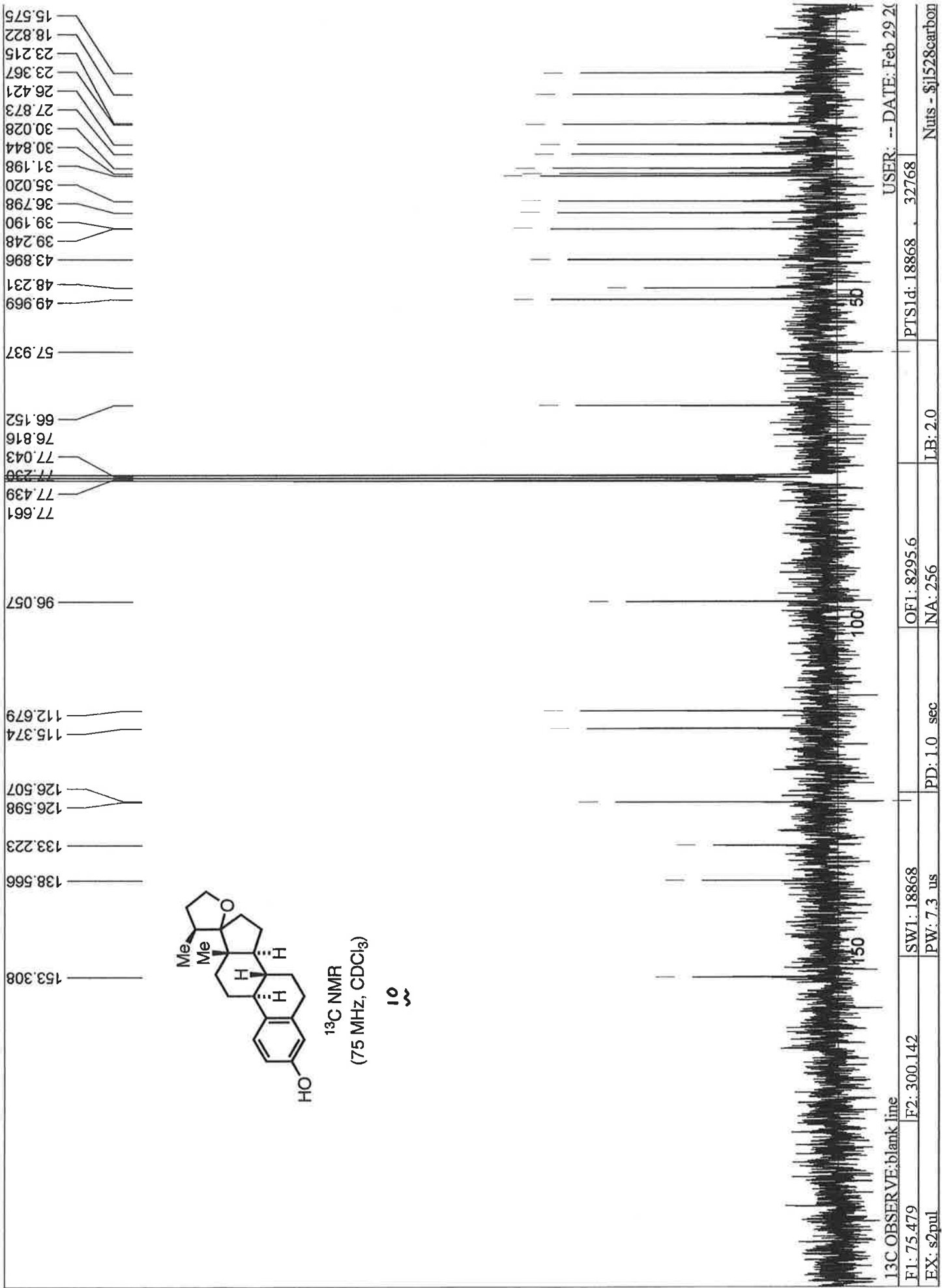
10

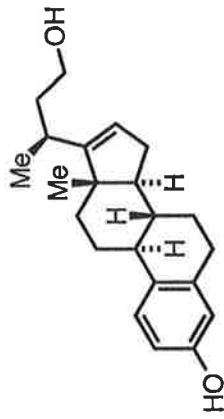


STANDARD 1H OBSERVE:blank line

F1: 300.142 F2: 75.478 SW1: 4803 OF1: 1803.0 PTS1d: 14409 USER: -- DATE: Feb 29 20

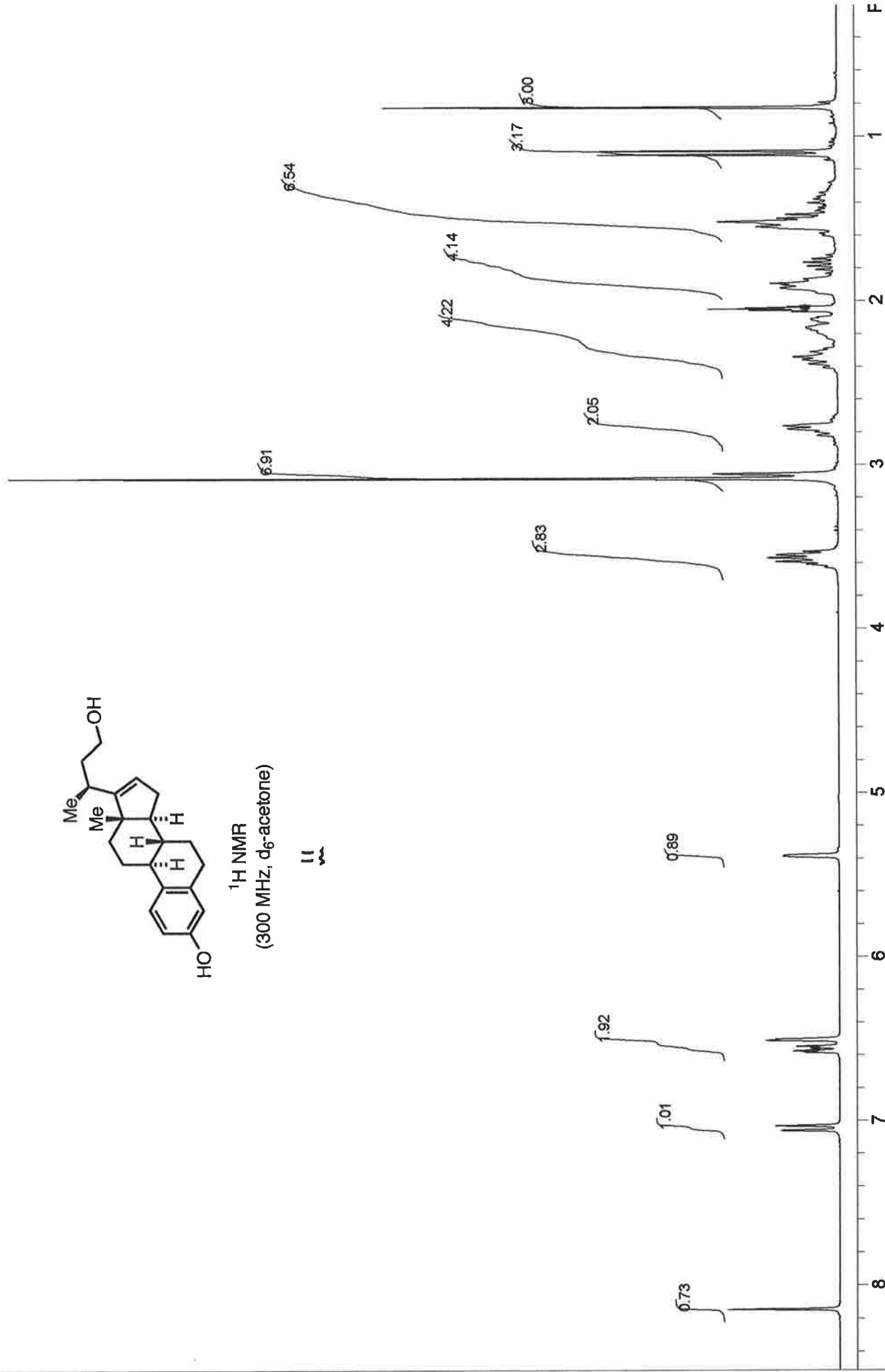
EX: s2pul PW: 6.0 us PD: 1.0 sec NA: 8 LB: 0.0 16384 Nuts - \$j1528a



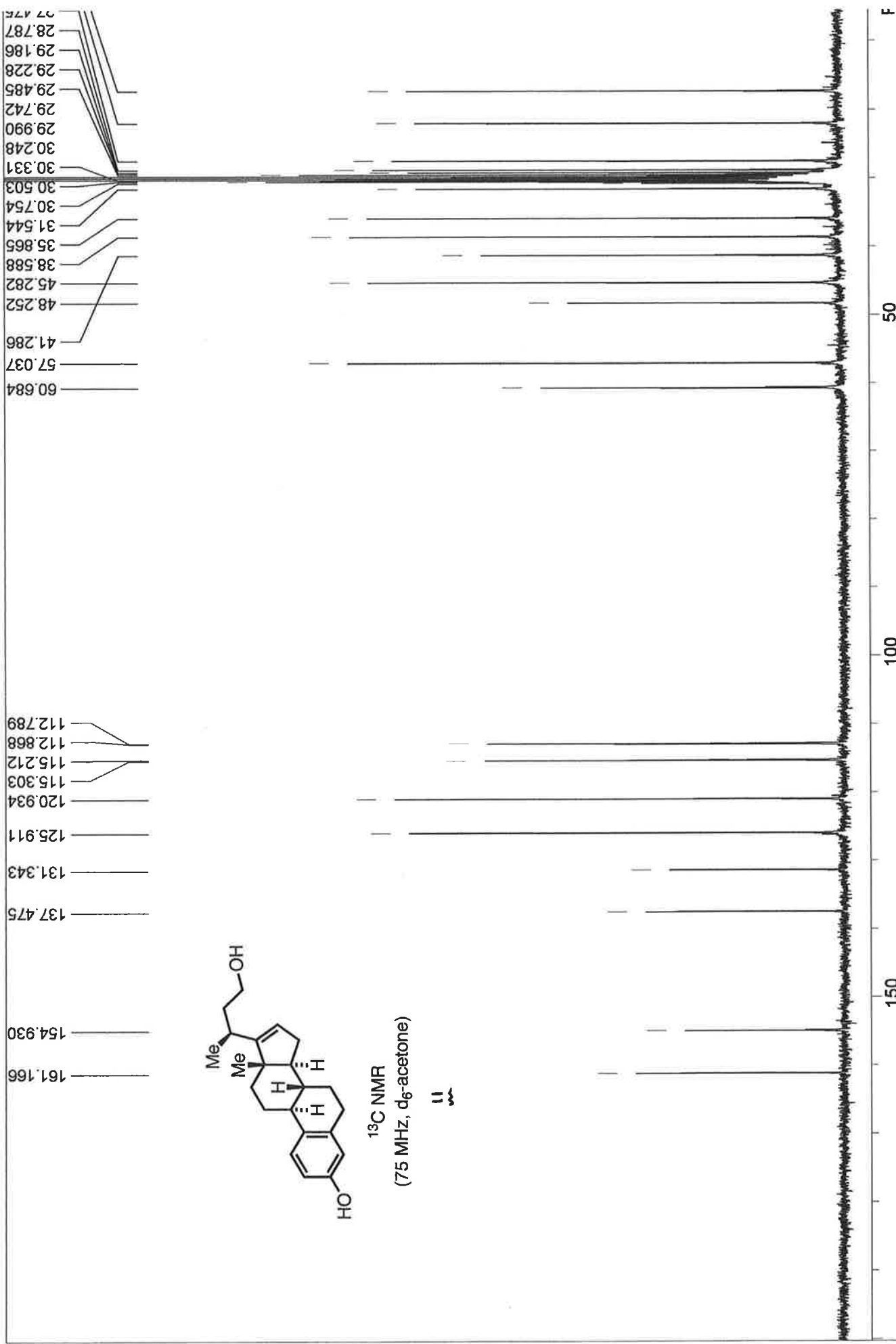


¹H NMR
(300 MHz, d₆-acetone)

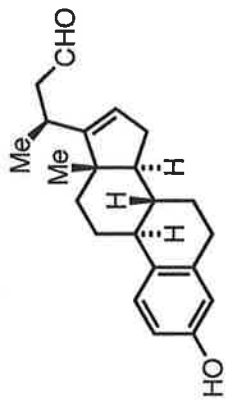
||
~



STANDARD 1H OBSERVE: blank line
 F1: 300.152 F2: 75.480 SW1: 4810 OF1: 1795.3 PTS1d: 14430 . 16384 USER: -- DATE: Sep 23 20
 EX: s2pul PD: 1.0 sec NA: 8 LB: 0.0 Nuts - \$zhep212

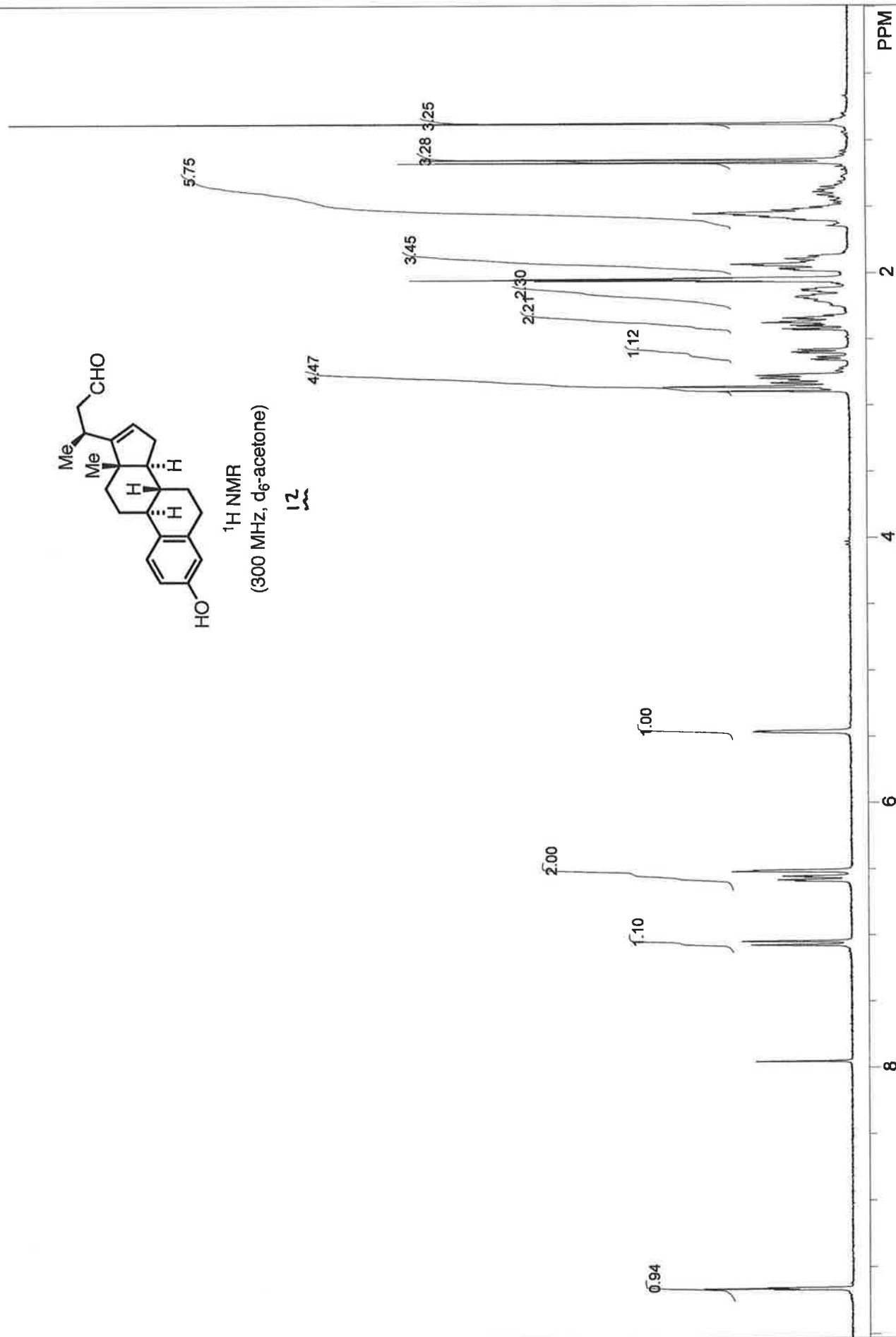


:blank line		USER: -- DATE: Sep 23 20	
F1: 75.481	F2: 300.152	PTS1d: 18868	32768
EX: s2pul	PW: 7.3 us	LB: 1.5	Nuts - \$CARBON
OF1: 8302.7	NA: 5000		

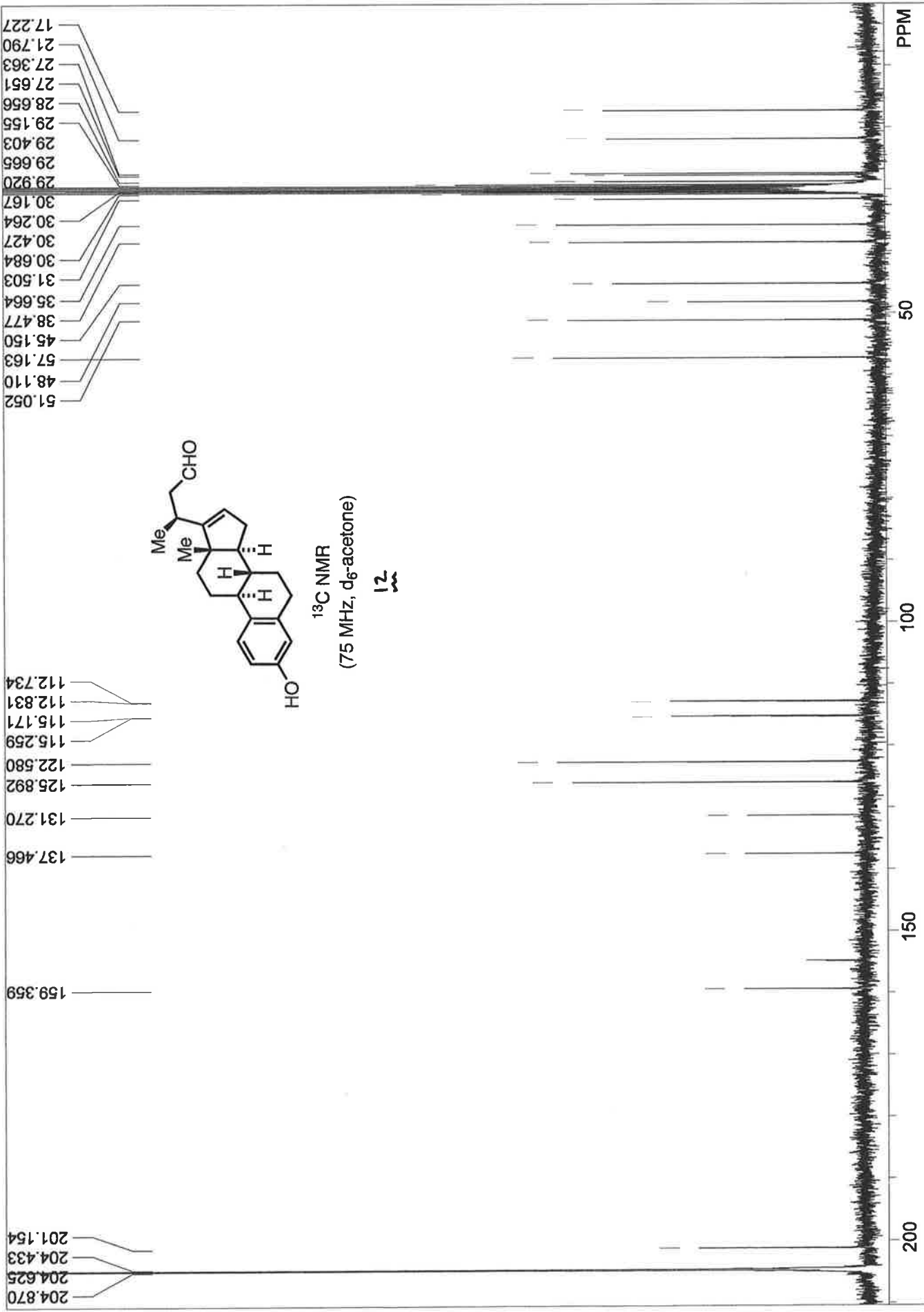


¹H NMR
(300 MHz, d₆-acetone)

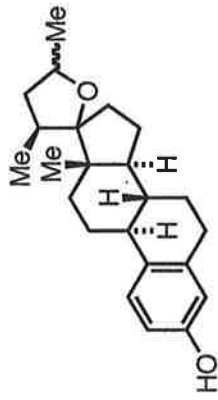
12



STANDARD 1H OBSERVE:blank line		USER: -- DATE: Oct 31 2002	
F1: 300.152	F2: 75.480	PTS1d: 14430	16384
EX: s2pul	PW: 6.0 us	PD: 1.0 sec	NA: 8
		OF1: 1795.4	LB: 0.0
			Nuts - \$zhep235.fid

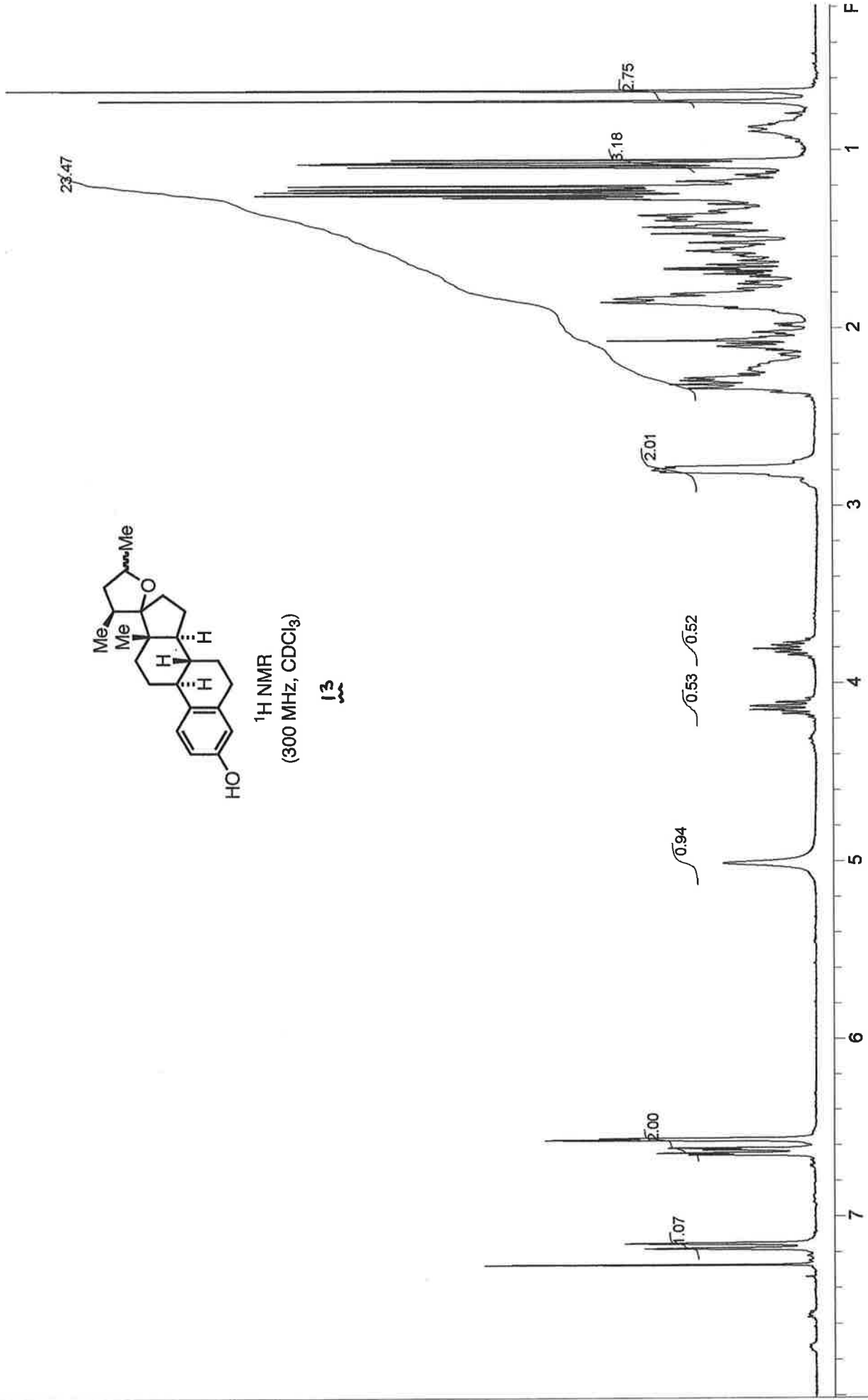


:blank line		USER: -- DATE: Oct 31 2002	
F1: 75.481	F2: 300.152	PTS1d: 18868	32768
EX: s2pul	PW: 7.3 us	LB: 1.0	Nuts - \$CARBON.fid
	PD: 1.0 sec	OF1: 8300.1	NA: 5000

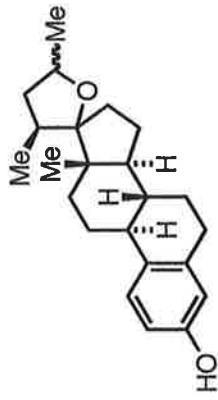


¹H NMR
(300 MHz, CDCl₃)

13

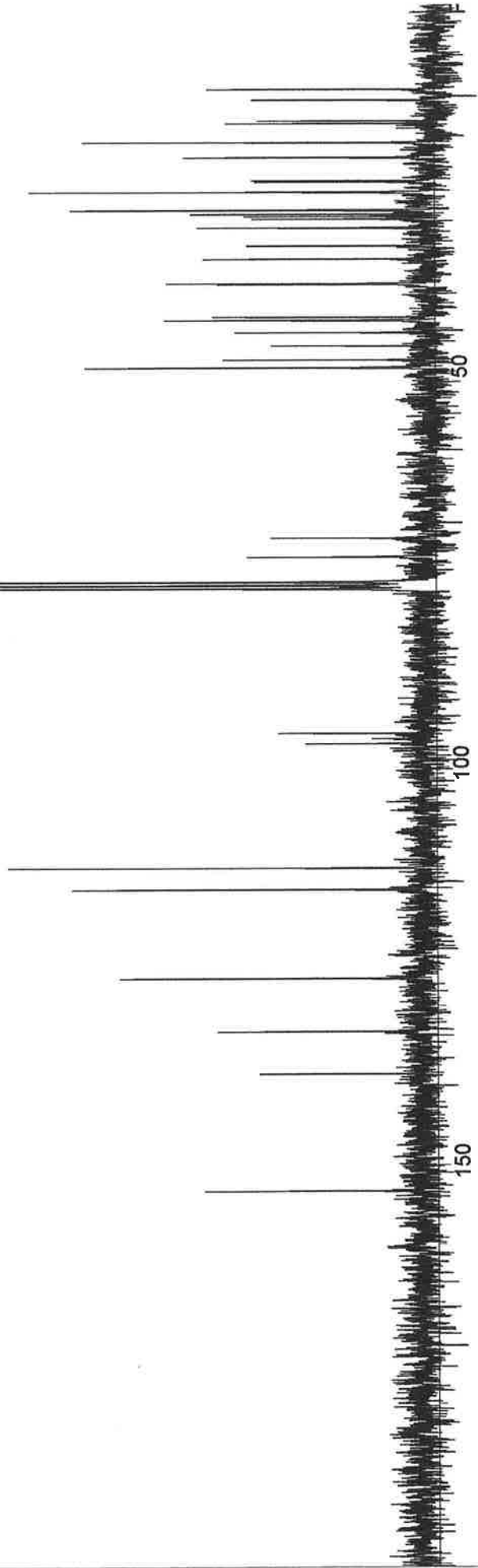


STANDARD 1H OBSERVE: blank line		USER: -- DATE: Mar 3 20	
F1: 300.142	F2: 75.478	PTS1d: 14409	16384
EX: s2pul	PW: 6.0 us	LB: 0.0	Nuts - \$j1529
	PD: 1.0 sec	OF1: 1802.7	
	NA: 8		

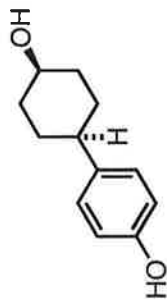


¹³C NMR
(75 MHz, CDCl₃)

13

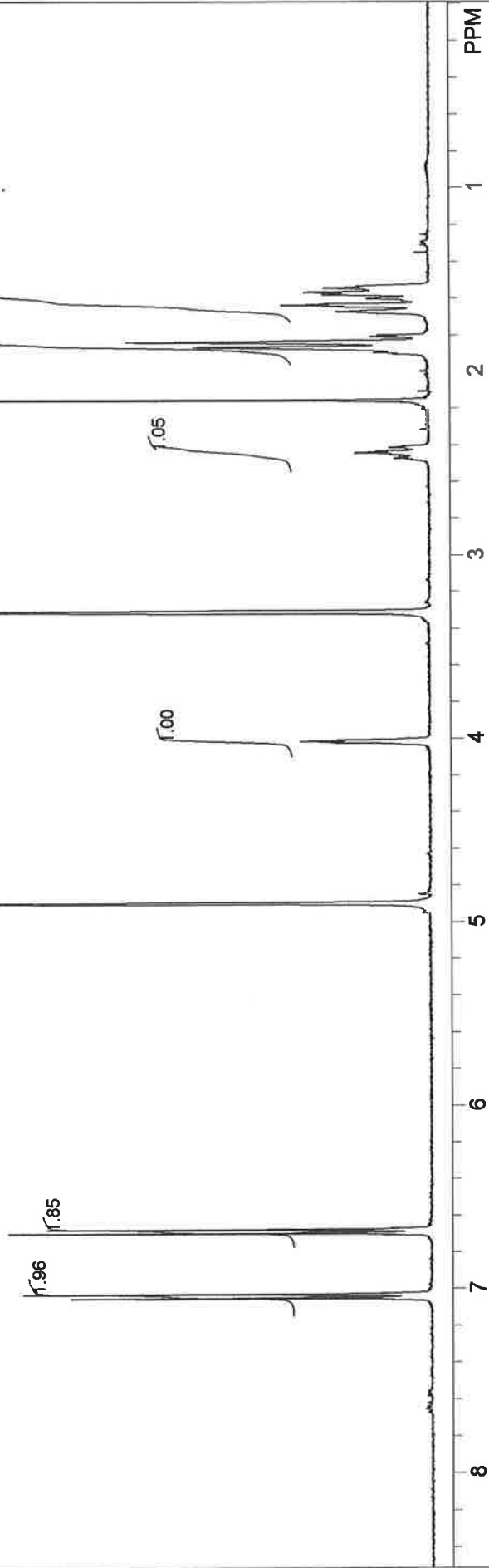


13C.OBSERVE:blank line	OF1: 8293.9	PTSD: 18868	USER: -- DATE: Mar 3 20
F1: 75.479	NA: 256	LB: 2.0	32768
EX: s2pul	PD: 1.0 sec		Nuts - \$1529carbon



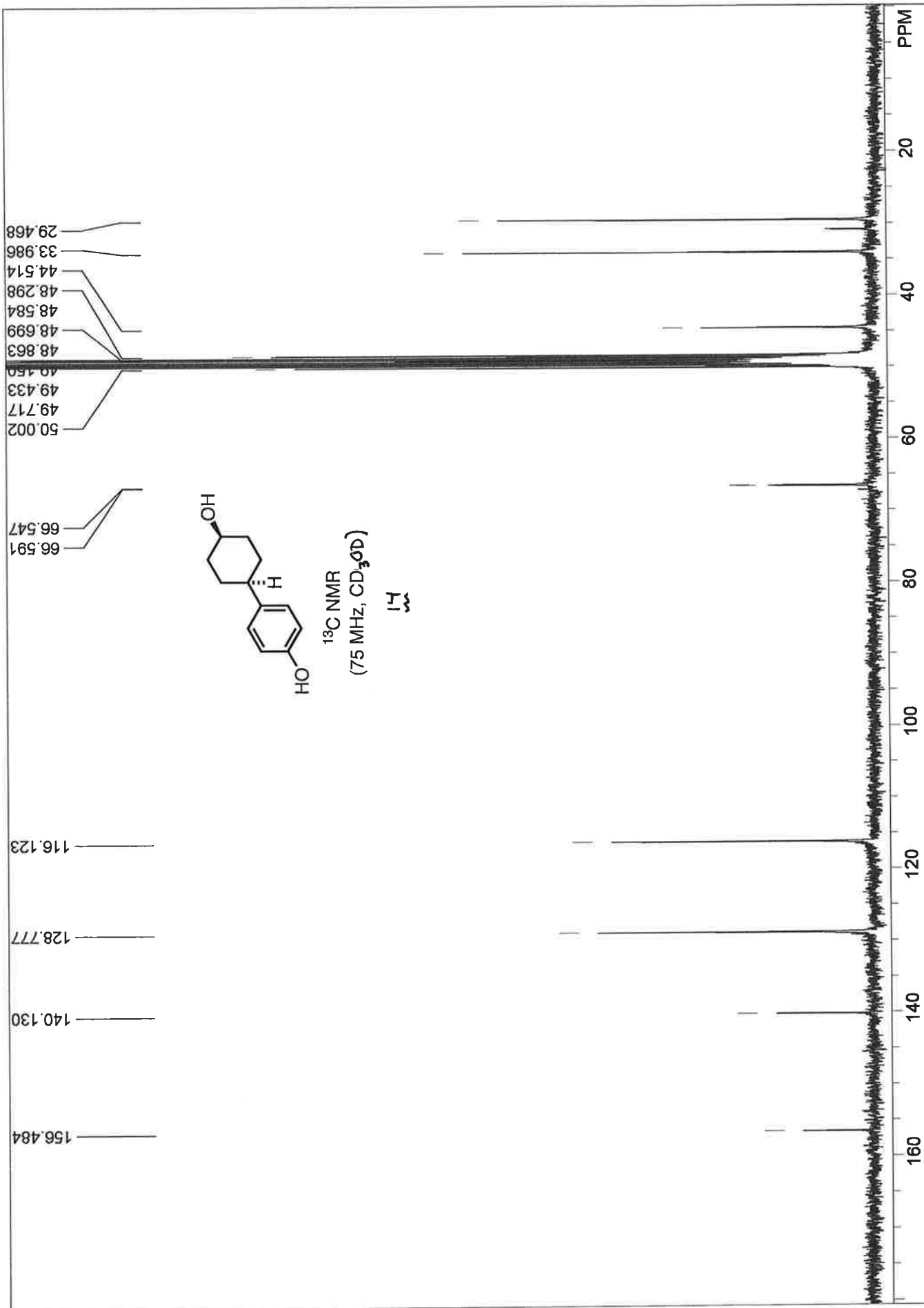
¹H NMR
(400 MHz, CD₃OD)

14

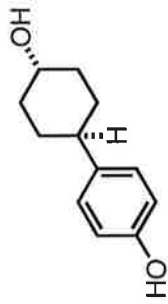


STANDARD 1H OBSERVE - profile

F1: 399.751	F2: 100.526	SW1: 6410	OF1: 827.0	PTS1d: 13132	16384	USER: -- DATE: Feb 19 2007
EX: s2pul		PW: 7.7 us	NA: 8	LB: 0.0		Nuts - \$rkpl30-[F-F-minor.fid

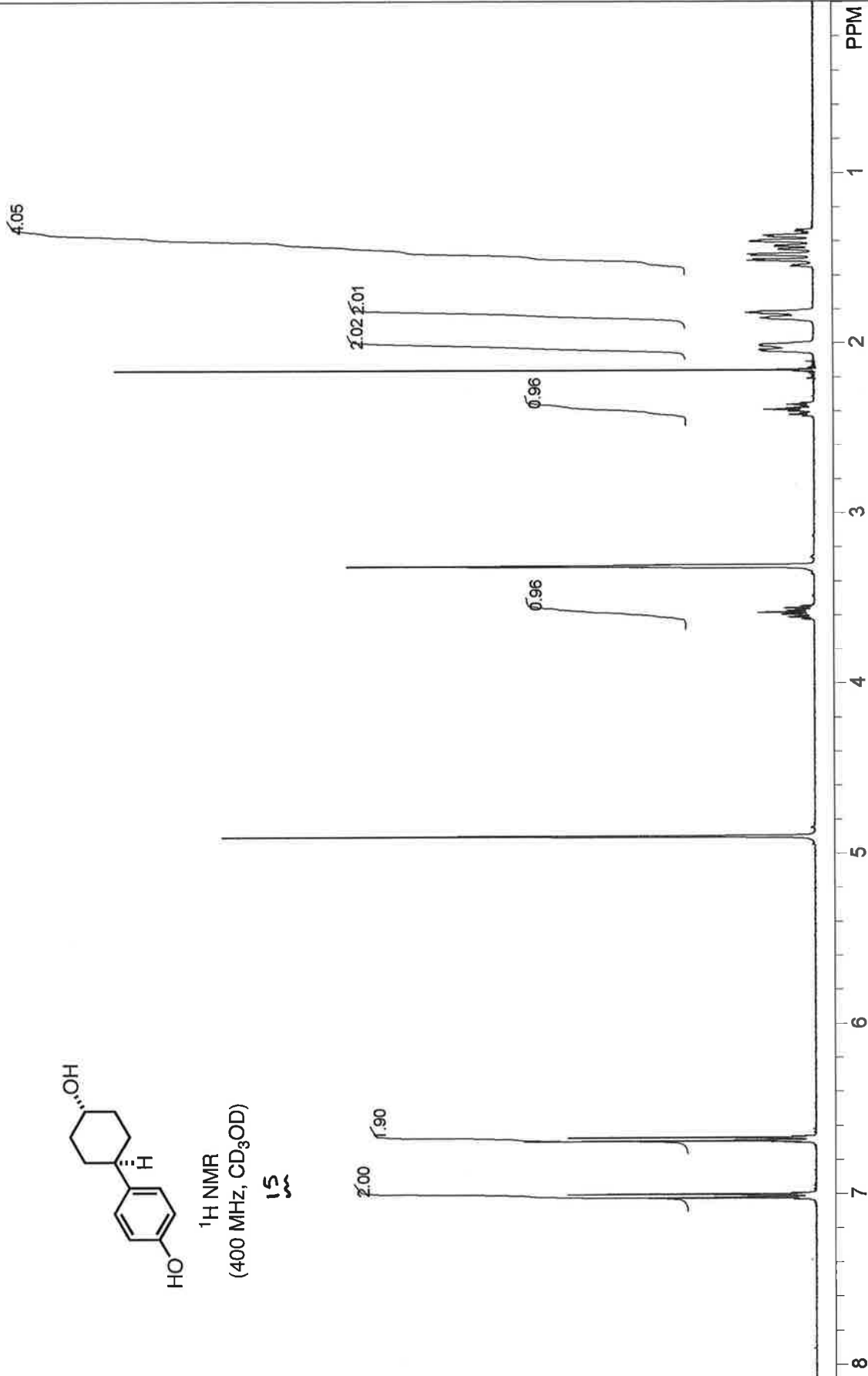


13C OBSERVE: blank line		USER: -- DATE: Feb 19 2007	
F1: 75.477	F2: 300.137	PTS1d: 34246	65536
EX: s2pul	SW1: 18868	NA: 64	Lib: 1.5
	PW: 7.3 us	PD: 1.0 sec	NA: 64
	OF1: 8402.5	NA: 64	NA: 64
	OF2: 8402.5	NA: 64	NA: 64
	OF3: 8402.5	NA: 64	NA: 64
	OF4: 8402.5	NA: 64	NA: 64
	OF5: 8402.5	NA: 64	NA: 64
	OF6: 8402.5	NA: 64	NA: 64
	OF7: 8402.5	NA: 64	NA: 64
	OF8: 8402.5	NA: 64	NA: 64
	OF9: 8402.5	NA: 64	NA: 64
	OF10: 8402.5	NA: 64	NA: 64
	OF11: 8402.5	NA: 64	NA: 64
	OF12: 8402.5	NA: 64	NA: 64
	OF13: 8402.5	NA: 64	NA: 64
	OF14: 8402.5	NA: 64	NA: 64
	OF15: 8402.5	NA: 64	NA: 64
	OF16: 8402.5	NA: 64	NA: 64
	OF17: 8402.5	NA: 64	NA: 64
	OF18: 8402.5	NA: 64	NA: 64
	OF19: 8402.5	NA: 64	NA: 64
	OF20: 8402.5	NA: 64	NA: 64
	OF21: 8402.5	NA: 64	NA: 64
	OF22: 8402.5	NA: 64	NA: 64
	OF23: 8402.5	NA: 64	NA: 64
	OF24: 8402.5	NA: 64	NA: 64
	OF25: 8402.5	NA: 64	NA: 64
	OF26: 8402.5	NA: 64	NA: 64
	OF27: 8402.5	NA: 64	NA: 64
	OF28: 8402.5	NA: 64	NA: 64
	OF29: 8402.5	NA: 64	NA: 64
	OF30: 8402.5	NA: 64	NA: 64
	OF31: 8402.5	NA: 64	NA: 64
	OF32: 8402.5	NA: 64	NA: 64
	OF33: 8402.5	NA: 64	NA: 64
	OF34: 8402.5	NA: 64	NA: 64
	OF35: 8402.5	NA: 64	NA: 64
	OF36: 8402.5	NA: 64	NA: 64
	OF37: 8402.5	NA: 64	NA: 64
	OF38: 8402.5	NA: 64	NA: 64
	OF39: 8402.5	NA: 64	NA: 64
	OF40: 8402.5	NA: 64	NA: 64
	OF41: 8402.5	NA: 64	NA: 64
	OF42: 8402.5	NA: 64	NA: 64
	OF43: 8402.5	NA: 64	NA: 64
	OF44: 8402.5	NA: 64	NA: 64
	OF45: 8402.5	NA: 64	NA: 64
	OF46: 8402.5	NA: 64	NA: 64
	OF47: 8402.5	NA: 64	NA: 64
	OF48: 8402.5	NA: 64	NA: 64
	OF49: 8402.5	NA: 64	NA: 64
	OF50: 8402.5	NA: 64	NA: 64
	OF51: 8402.5	NA: 64	NA: 64
	OF52: 8402.5	NA: 64	NA: 64
	OF53: 8402.5	NA: 64	NA: 64
	OF54: 8402.5	NA: 64	NA: 64
	OF55: 8402.5	NA: 64	NA: 64
	OF56: 8402.5	NA: 64	NA: 64
	OF57: 8402.5	NA: 64	NA: 64
	OF58: 8402.5	NA: 64	NA: 64
	OF59: 8402.5	NA: 64	NA: 64
	OF60: 8402.5	NA: 64	NA: 64
	OF61: 8402.5	NA: 64	NA: 64
	OF62: 8402.5	NA: 64	NA: 64
	OF63: 8402.5	NA: 64	NA: 64
	OF64: 8402.5	NA: 64	NA: 64
	OF65: 8402.5	NA: 64	NA: 64
	OF66: 8402.5	NA: 64	NA: 64
	OF67: 8402.5	NA: 64	NA: 64
	OF68: 8402.5	NA: 64	NA: 64
	OF69: 8402.5	NA: 64	NA: 64
	OF70: 8402.5	NA: 64	NA: 64
	OF71: 8402.5	NA: 64	NA: 64
	OF72: 8402.5	NA: 64	NA: 64
	OF73: 8402.5	NA: 64	NA: 64
	OF74: 8402.5	NA: 64	NA: 64
	OF75: 8402.5	NA: 64	NA: 64
	OF76: 8402.5	NA: 64	NA: 64
	OF77: 8402.5	NA: 64	NA: 64
	OF78: 8402.5	NA: 64	NA: 64
	OF79: 8402.5	NA: 64	NA: 64
	OF80: 8402.5	NA: 64	NA: 64
	OF81: 8402.5	NA: 64	NA: 64
	OF82: 8402.5	NA: 64	NA: 64
	OF83: 8402.5	NA: 64	NA: 64
	OF84: 8402.5	NA: 64	NA: 64
	OF85: 8402.5	NA: 64	NA: 64
	OF86: 8402.5	NA: 64	NA: 64
	OF87: 8402.5	NA: 64	NA: 64
	OF88: 8402.5	NA: 64	NA: 64
	OF89: 8402.5	NA: 64	NA: 64
	OF90: 8402.5	NA: 64	NA: 64
	OF91: 8402.5	NA: 64	NA: 64
	OF92: 8402.5	NA: 64	NA: 64
	OF93: 8402.5	NA: 64	NA: 64
	OF94: 8402.5	NA: 64	NA: 64
	OF95: 8402.5	NA: 64	NA: 64
	OF96: 8402.5	NA: 64	NA: 64
	OF97: 8402.5	NA: 64	NA: 64
	OF98: 8402.5	NA: 64	NA: 64
	OF99: 8402.5	NA: 64	NA: 64
	OF100: 8402.5	NA: 64	NA: 64



¹H NMR
(400 MHz, CD₃OD)

15



STANDARD 1H OBSERVE - profile

USER: -- DATE: Feb 19 2007

F1: 399.753 F2: 100.527

OF1: 2402.0

PTSId: 13132 16384

EX: s2pul

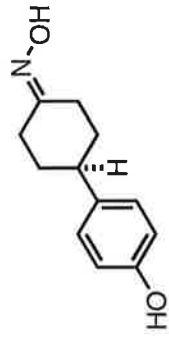
PW: 7.7 us

PD: 1.0 sec

NA: 8

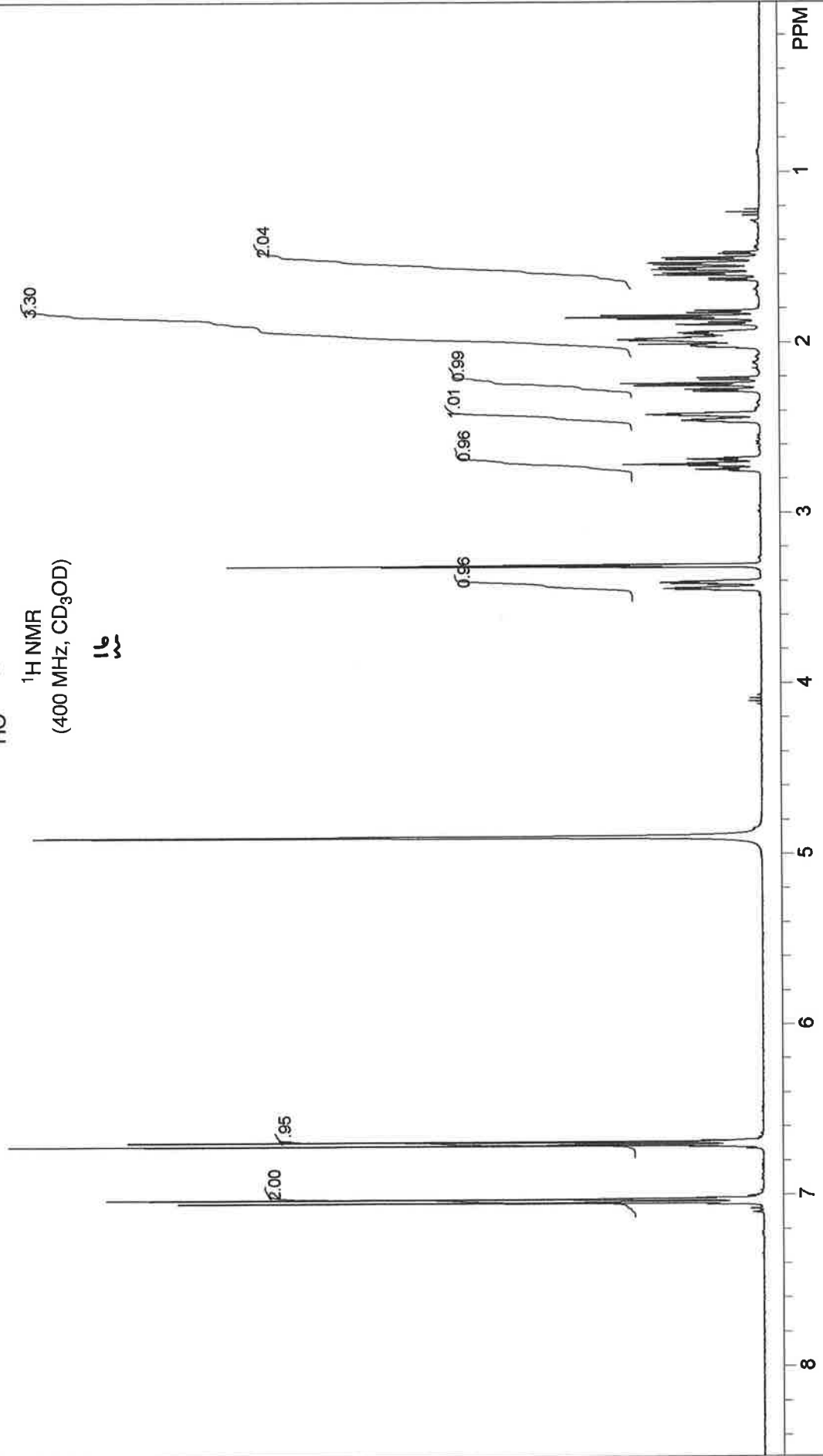
LB: 0.0

Nuts - \$rkp130-II-F-major.fid



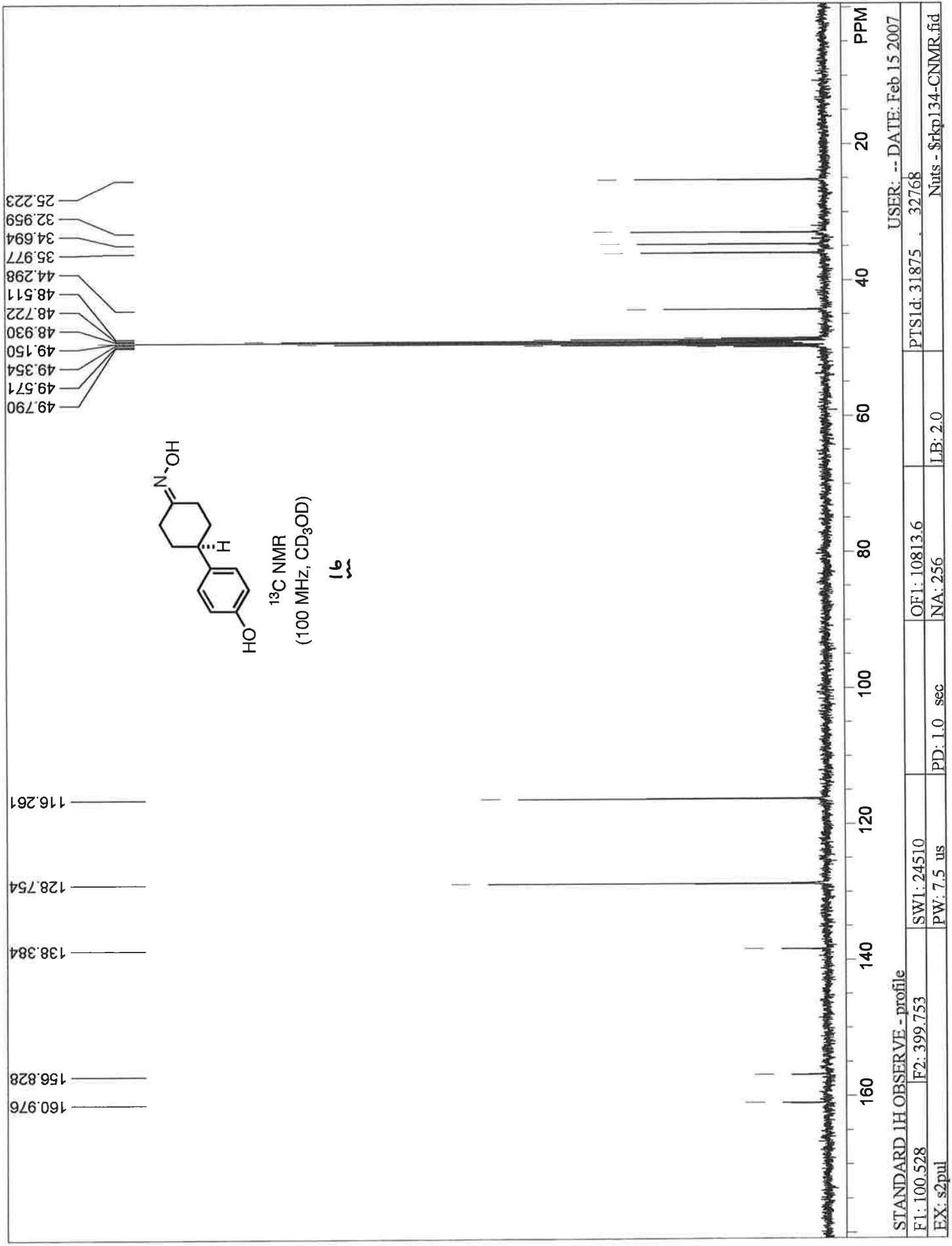
¹H NMR
(400 MHz, CD₃OD)

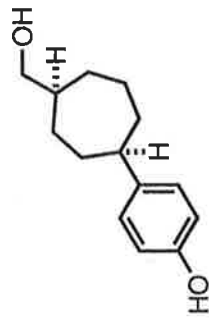
1b



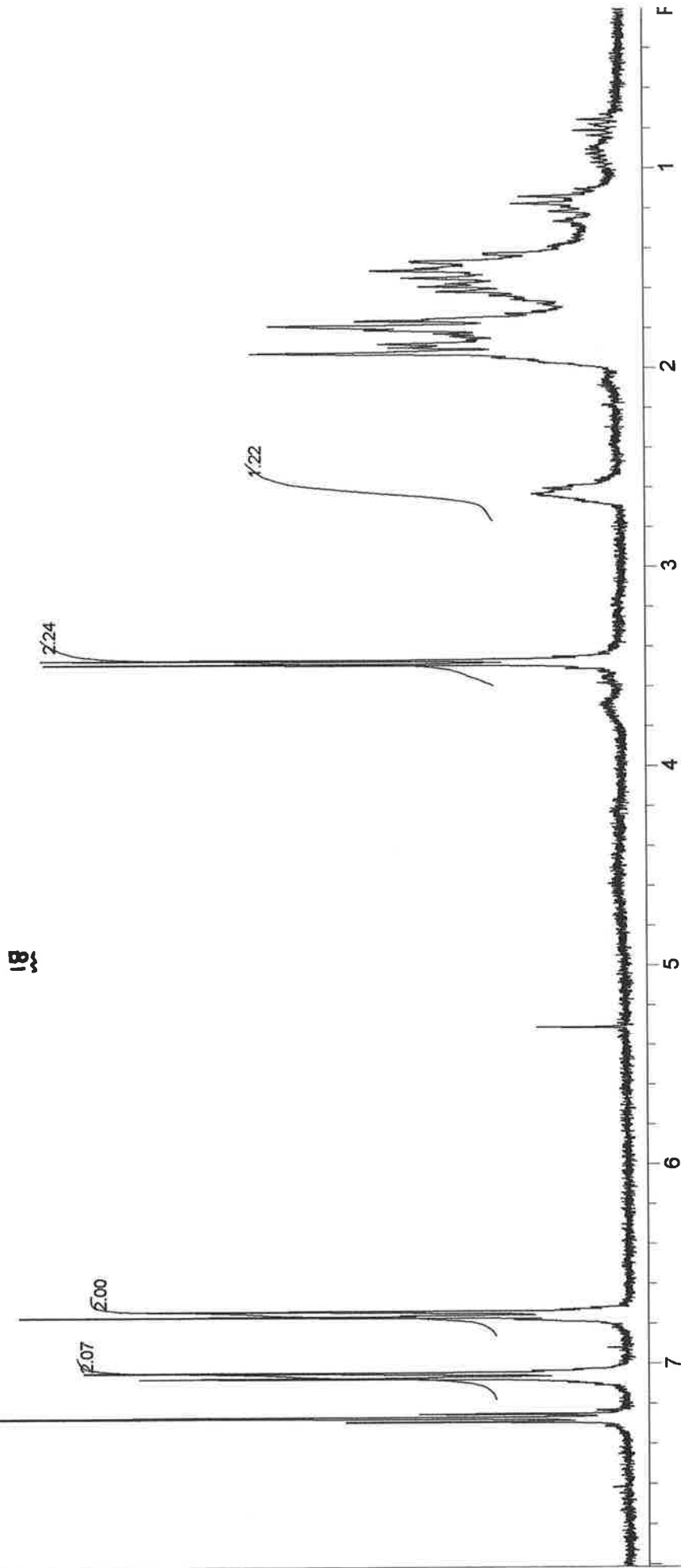
STANDARD 1H OBSERVE - profile

F1: 399.753	F2: 100.527	SW1: 6410	OF1: 2901.8	PTS1d: 13132	USER: -- DATE: Feb 15 2007
EX: s2pul	PW: 7.7 us	PD: 1.0 sec	NA: 8	LB: 0.0	16384
					Nuts - \$rkp134-crude.fid

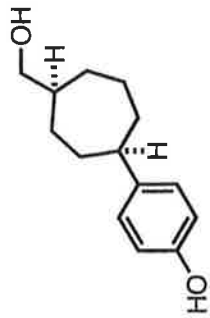




¹H NMR
(300 MHz, CDCl₃)



STANDARD 1H OBSERVE: blank line		USER: -- DATE: Oct 11 20	
F1: 300.145	F2: 75.479	PTS1d: 14430	16384
EX: s2pul	PD: 1.0 sec	LB: 0.0	Nuts - \$rkp086-II-F-HINMR
OF1: 1804.1	NA: 64		



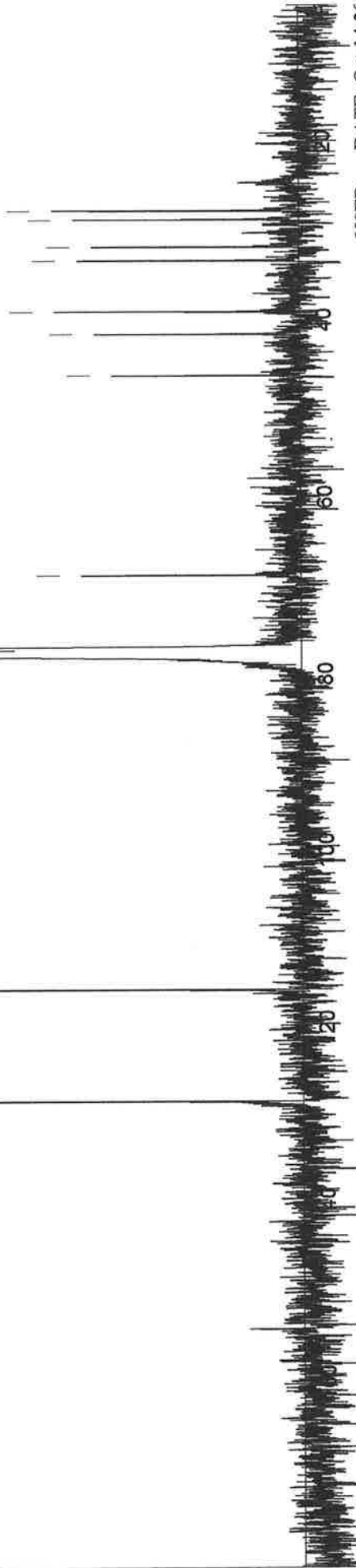
¹³C NMR
(75 MHz, CDCl₃)

18

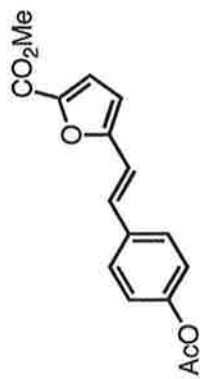
46.050
41.391
38.846
33.113
31.577
28.528
27.526

77.649
77.418
77.230
76.802
68.587

127.888
115.277

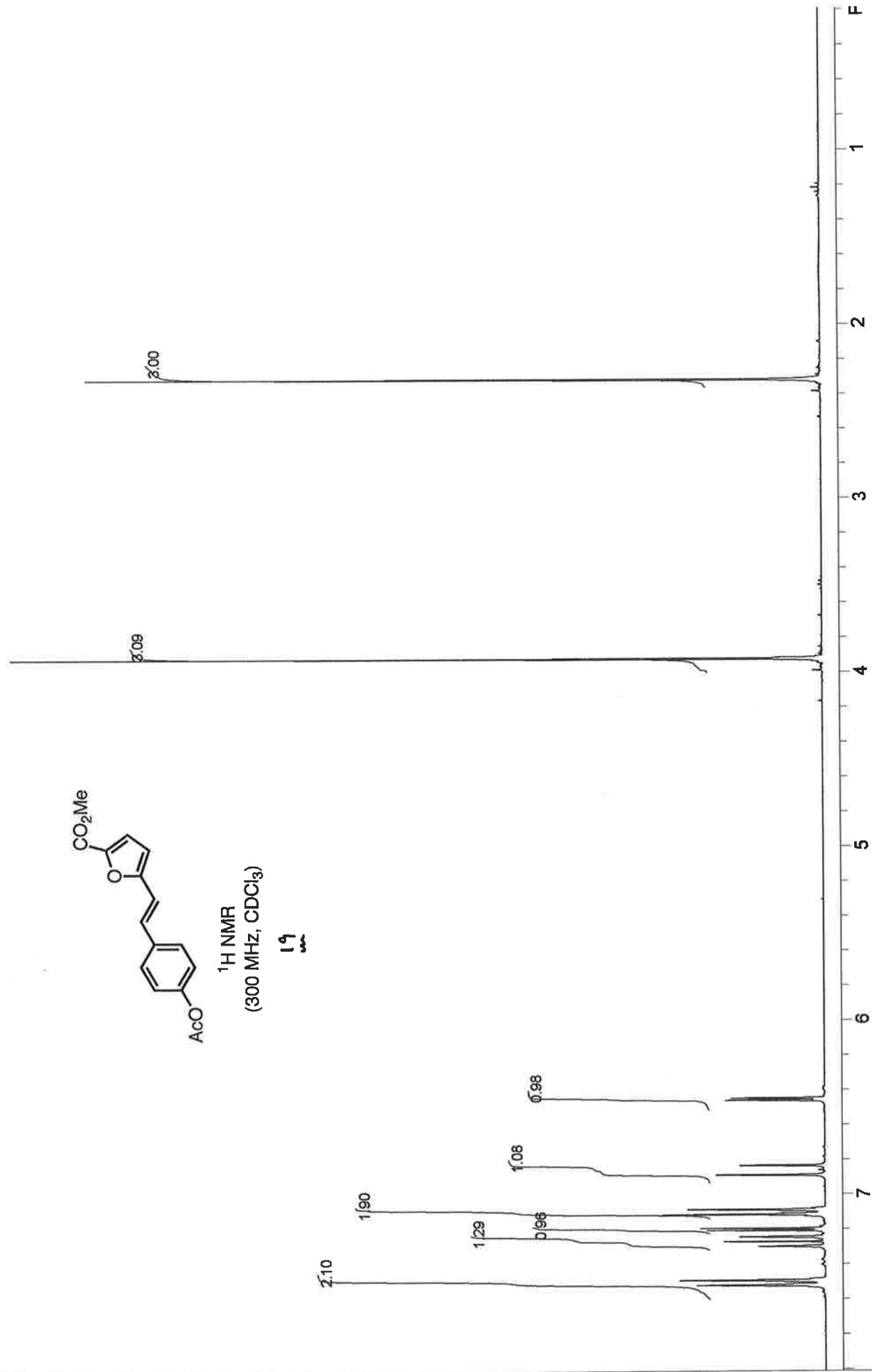


13C OBSERVE: blank line		USER: -- DATE: Oct 14 20	
F1: 75.479	F2: 300.145	PTS1d: 18868	32768
EX: s2pul		LB: 2.0	
		NA: 24000	
		OF1: 8300.1	
		PD: 1.0 sec	
		SW1: 18868	
		PW: 7.3 us	
			Nuts - \$tkp086-II-F-CNMNR

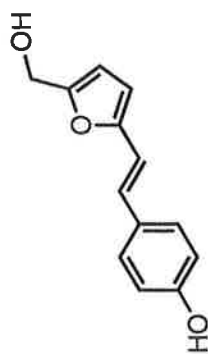


¹H NMR
(300 MHz, CDCl₃)

19

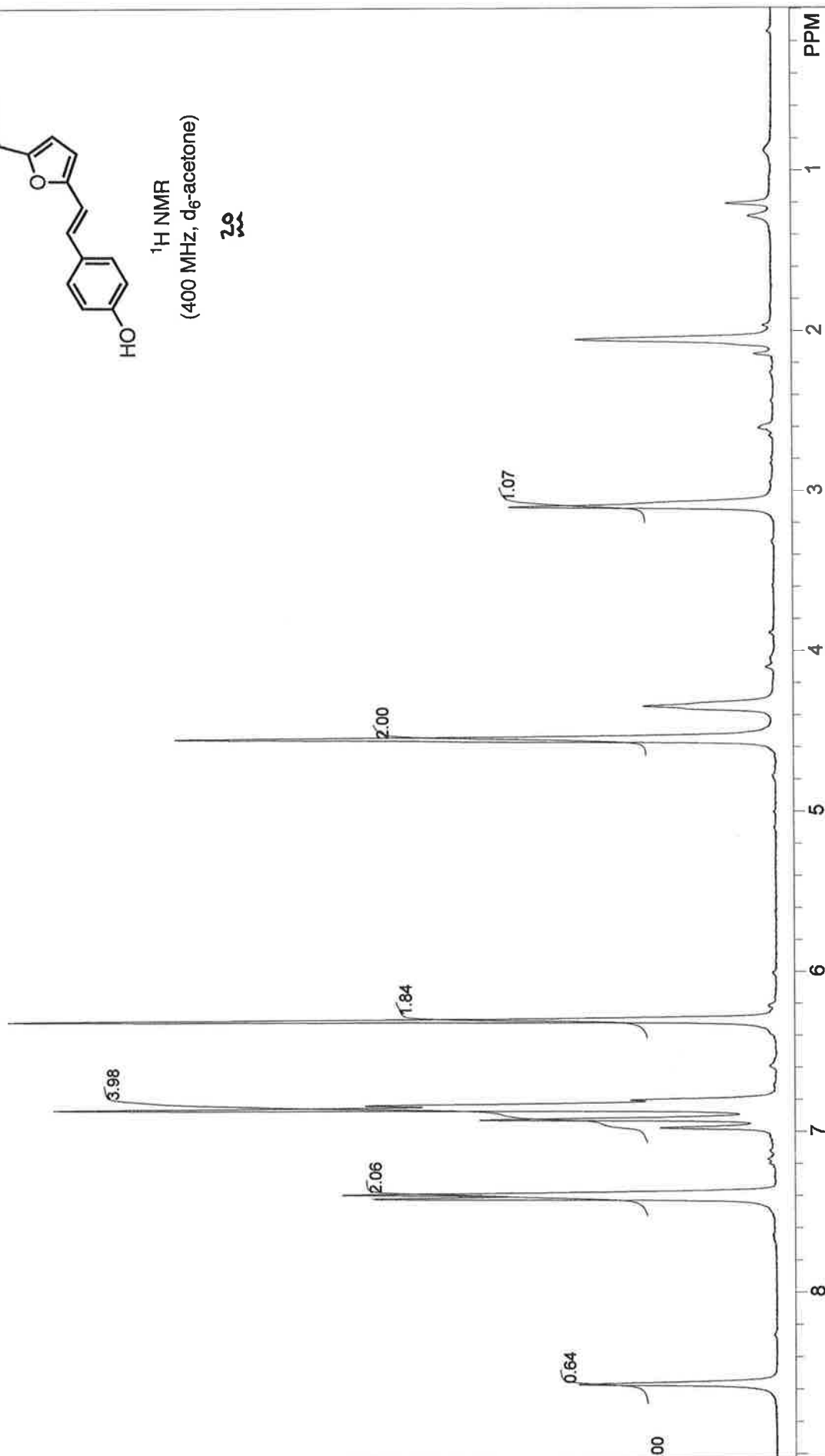


STANDARD 1H OBSERVE:blank line		USER: -- DATE: Sep 21 20	
F1: 300.145	F2: 75.479	PTS1:d: 14409	16384
EX: s2pul	PD: 1.0 sec	LB: 0.0	Nuts - \$rkp-HH-sample

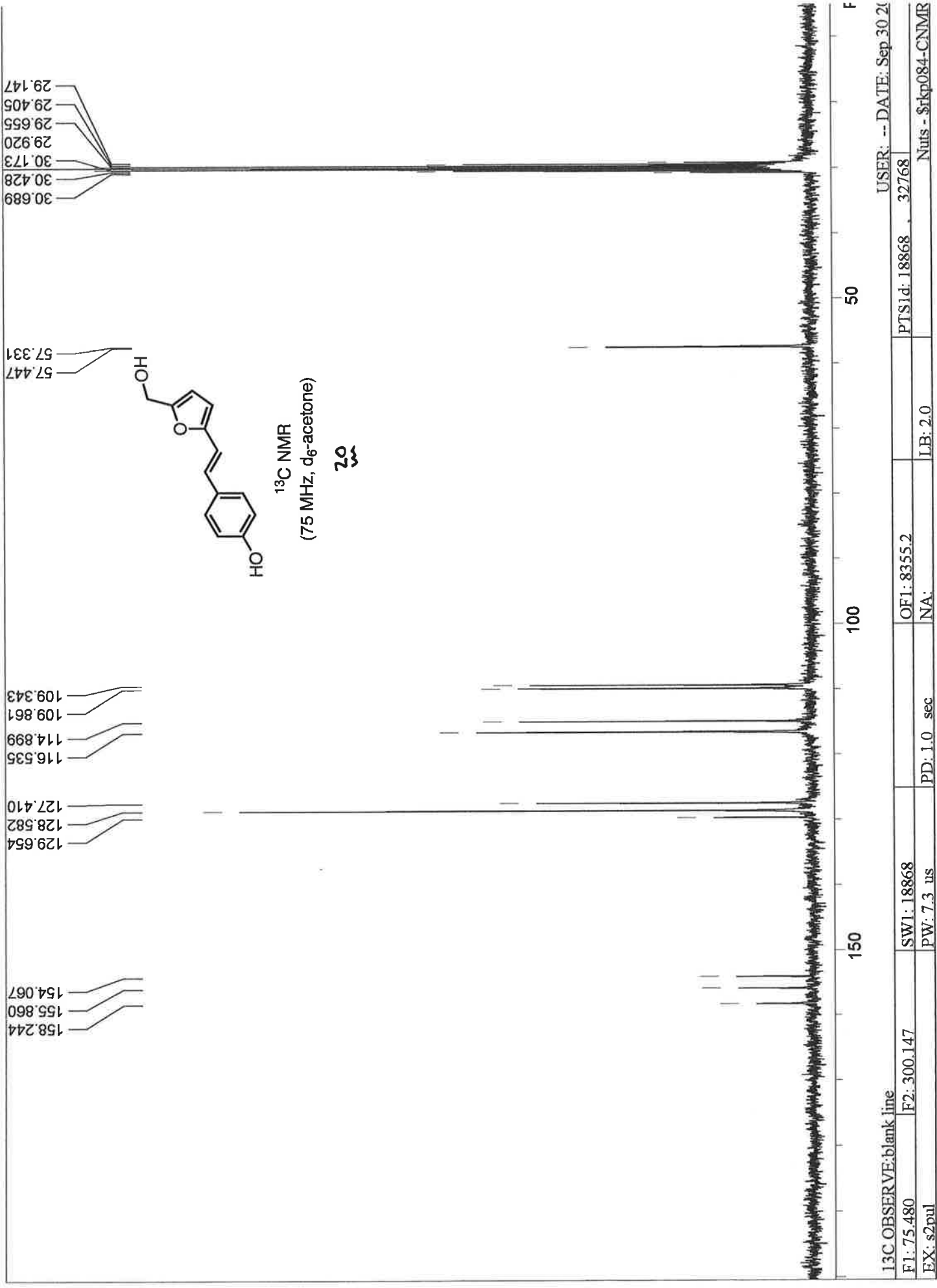


¹H NMR
(400 MHz, d₆-acetone)

2.0



STANDARD 1H OBSERVE:blank line		USER: -- DATE: Sep 30 2006	
F1: 300.147	F2: 75.479	PTS1d: 14409	16384
EX: s2pul	PD: 1.0 sec	OF1: 1800.9	LB: 0.0
		NA: 8	Nuts - \$rkp084-HNMR



13C OBSERVE: blank line	USER: -- DATE: Sep 30 20
F1: 75.480	PTS1d: 18868 . 32768
F2: 300.147	OF1: 8355.2
EX: s2pul	NA:
	PD: 1.0 sec
	PW: 7.3 us
	LB: 2.0
	Nuts - \$rkp084-CNMIR