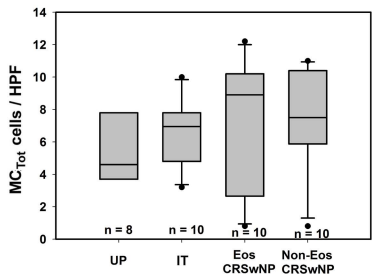
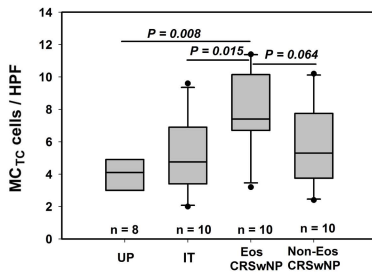
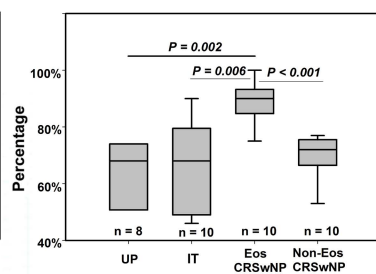
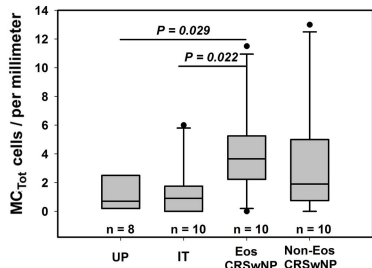
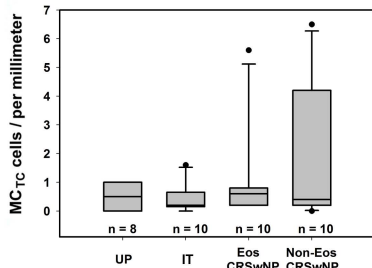
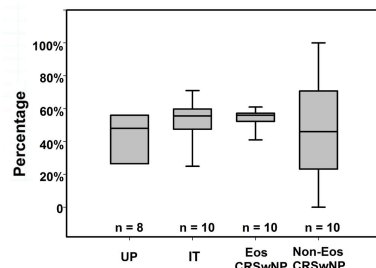
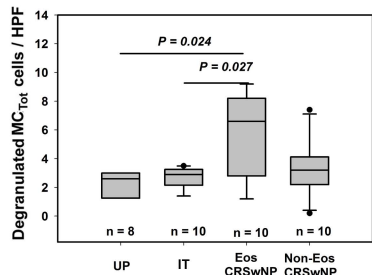
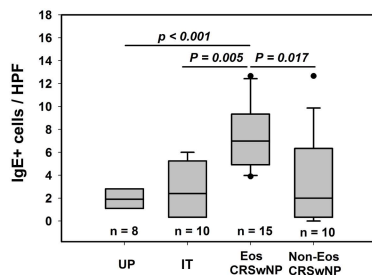
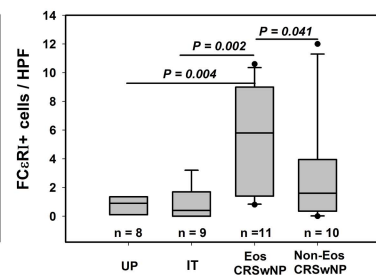


MC_{Tot} in the LP (Anti-Trypsin IHC)**MC_{TC} in the LP (Anti-Chymase IHC)****MC_{TC} / MC_{Tot} in the LP****MC_{Tot} in the epithelium (Anti-Trypsin IHC)****MC_{TC} in the epithelium (Anti-Chymase IHC)****MC_{TC} / MC_{Tot} in the epithelium****Activated MC_{Tot} (Anti-Trypsin IHC)****IgE-positive cells****FCεRI-positive cells****Local IgE level**