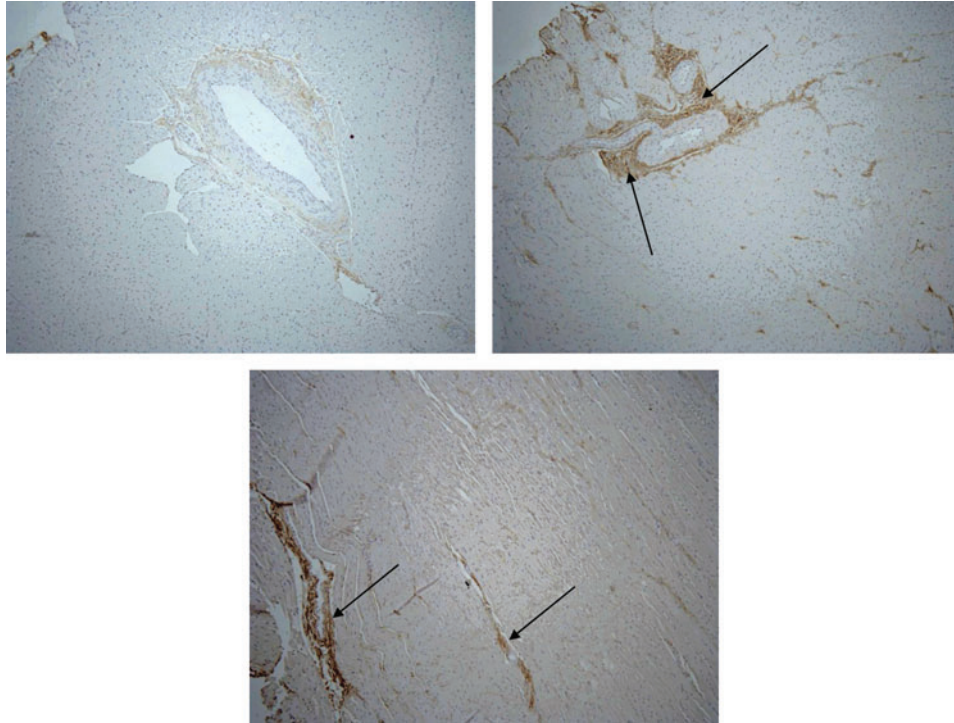


Supplementary Data



SUPPLEMENTARY FIG. S1. Transmural tissue samples were taken from protocol 3 studies using saline vehicle or SNP. *Upper left:* Negative control taken from the LAD perfused myocardium; the section was not exposed to the secondary antibody. *Upper right:* A section taken from the LCx-perfused myocardium of the saline control group. Brown staining indicates the presence of luciferase (arrows). *Lower panel:* Section taken from the anterior myocardium perfused by the LAD in the SNP group. Note brown staining of perivascular tissue (arrows). Magnification: 100 ×.