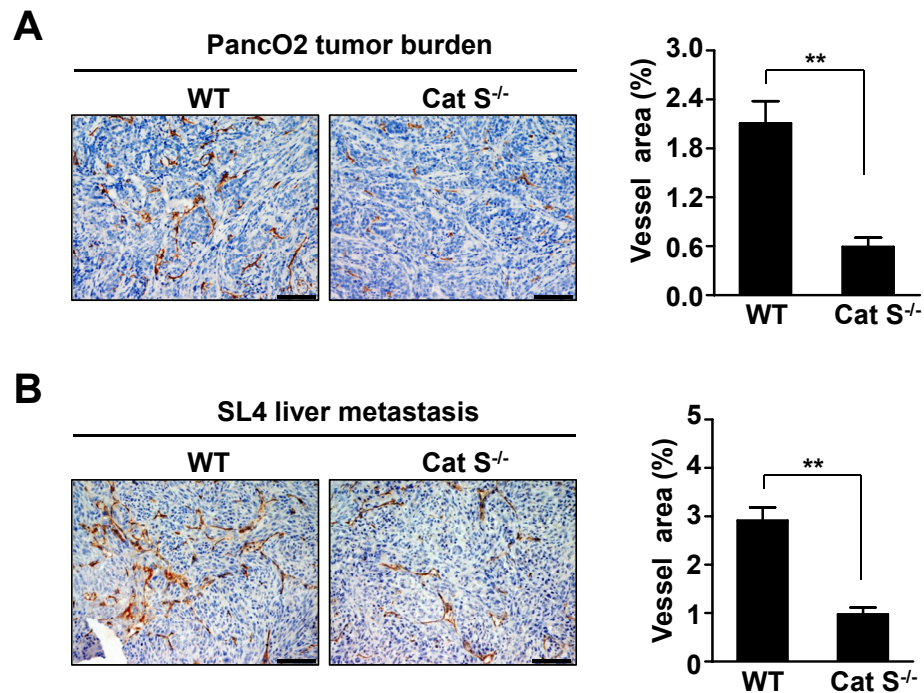


Supplementary Figure 1



Supplementary Figure 1. Cat S deficiency inhibits angiogenesis in tumor development. The area of vessels was evaluated by immunohistochemical analysis with anti-CD31 antibody in PancO2 subcutaneous tumors (A) and in metastasized foci after intrasplenic injection of SL4 cells (B). ($\times 200$ magnification and Scale bars = $100 \mu\text{m}$). Quantitative analysis of CD31 expression in subcutaneous tumors and metastasized foci sections. Data are mean \pm SEM for $n = 8$ mice with 10 fields per animal. **, $P < 0.01$.