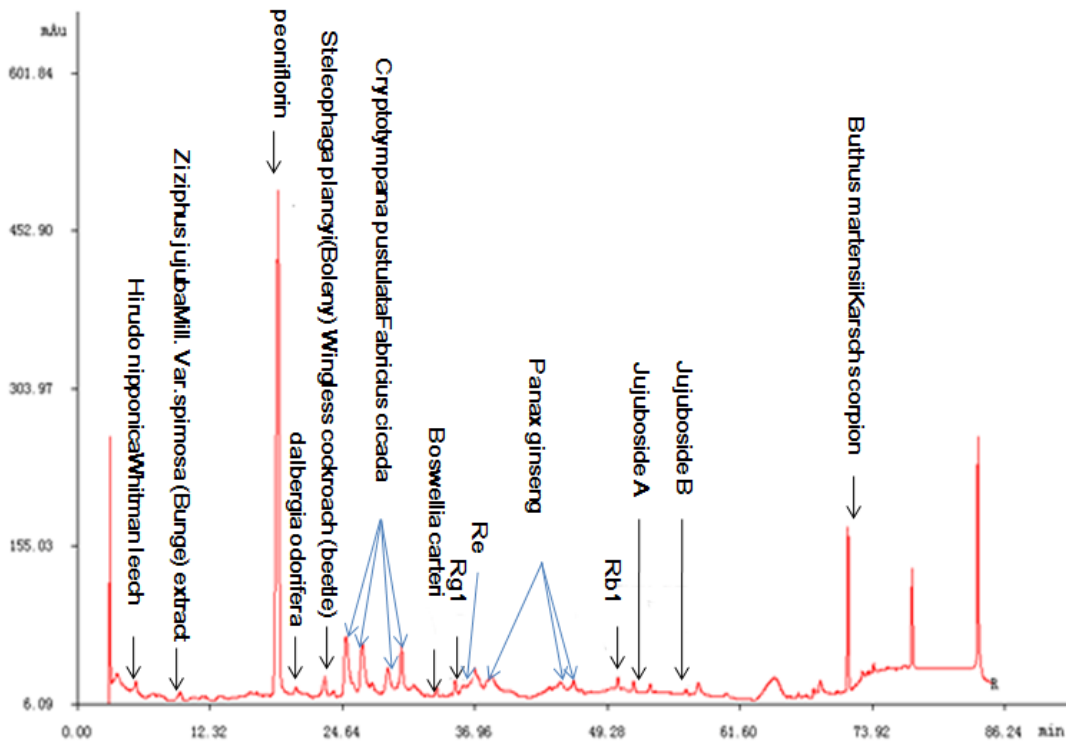


## Formulation of Tong xinluo

Ingredient	Components	%
<i>Panax ginseng</i> C. A. Mey. extract	Root and rhizome	1.7
<i>Paeonia lactiflora</i> Pall. extract	Root	1.6
<i>Ziziphus jujuba</i> Mill. Var. <i>spimosa</i> (Bunge) extract	Seed	1.2
<i>Santalum album</i> . extract	Heartwood of stem	0.4
<i>Dalbergia odorifera</i> extract	Heartwood of stem and root	4.0
<i>Steleophaga plancyi</i> (Boleny) Wingless cockroach (beetle)	Female dried body	18.1
<i>Scolopendra subspinipes mutilans</i> L. Koch red-headed centipede	Dried body	3.6
<i>Hirudo nipponica</i> Whitman leech	Dried body	27.3
<i>Cryptotympana pustulata</i> Fabricius cicada	Skin	18.1
<i>Buthus martensii</i> Karsch scorpion	Dried body	18.1
<i>Boswellia carteri</i>	Resin	6.0
<i>Borneolum syntheticum</i>	C <sub>10</sub> H <sub>18</sub> O	3.6

## Result of high performance liquid chromatography (HPLC)



High performance liquid chromatography (HPLC) of Tongxinluo