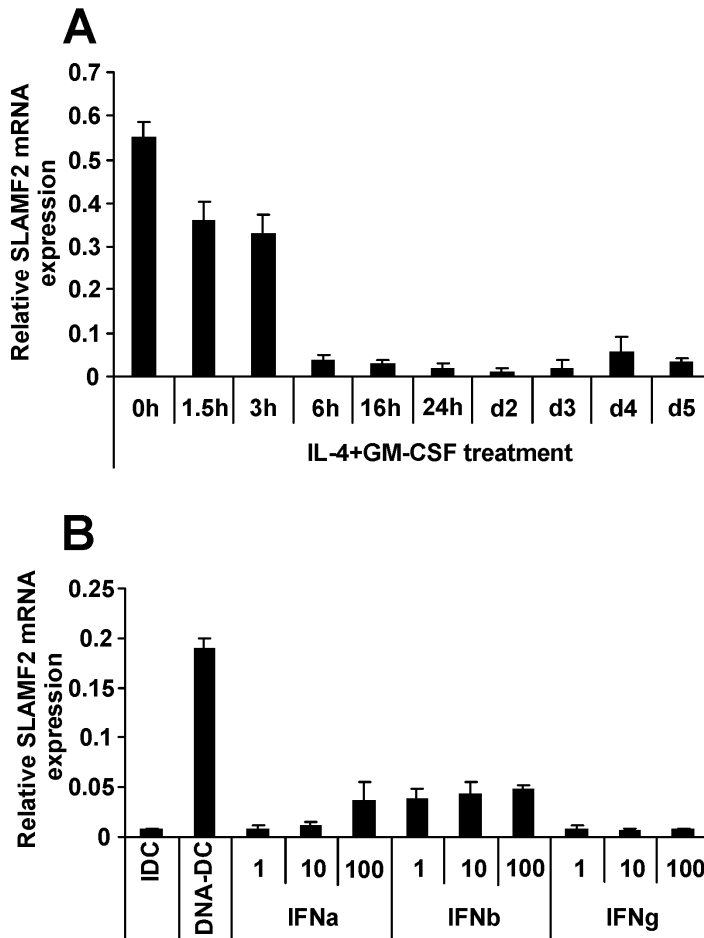


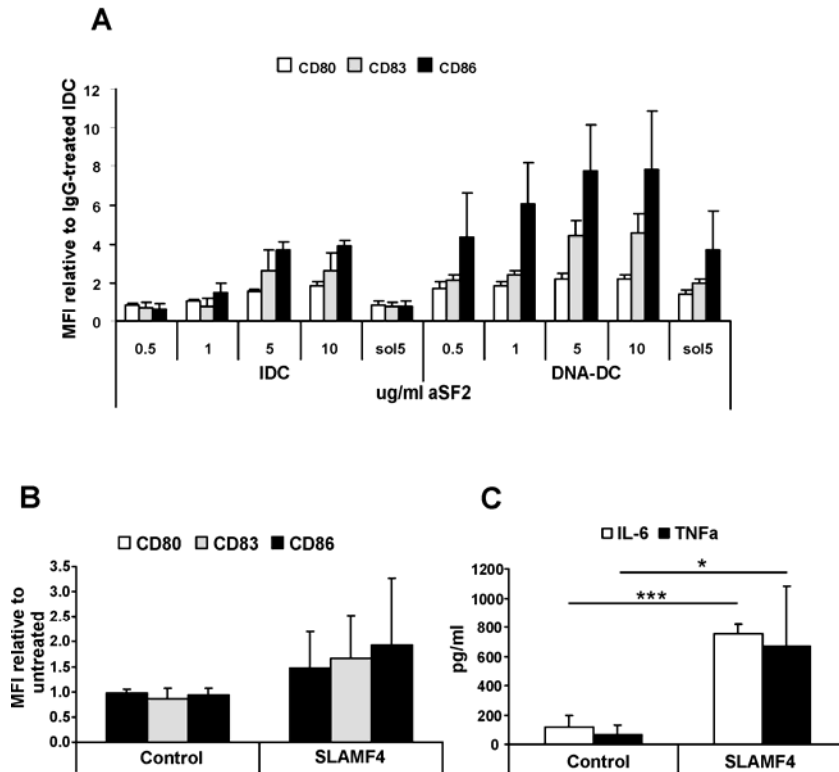
Supplementary figure 1



Suppl. Fig 1. SLAMF2 expression on monocytes and monocyte-derived dendritic cells

(A) Relative SLAMF2 mRNA expression of CD14⁺ monocytes (0h) and monocyte-derived dendritic cells in the presence of IL-4 and GM-CSF for the indicated time points measured by Q-PCR (n=3, one representative experiment shown). (B) Relative SLAMF2 mRNA expression of IDCs, DNA-DCs and IDCs treated with the indicated concentrations of IFNs (μ g/ml) (n=3, one representative experiment shown).

Supplementary figure 2

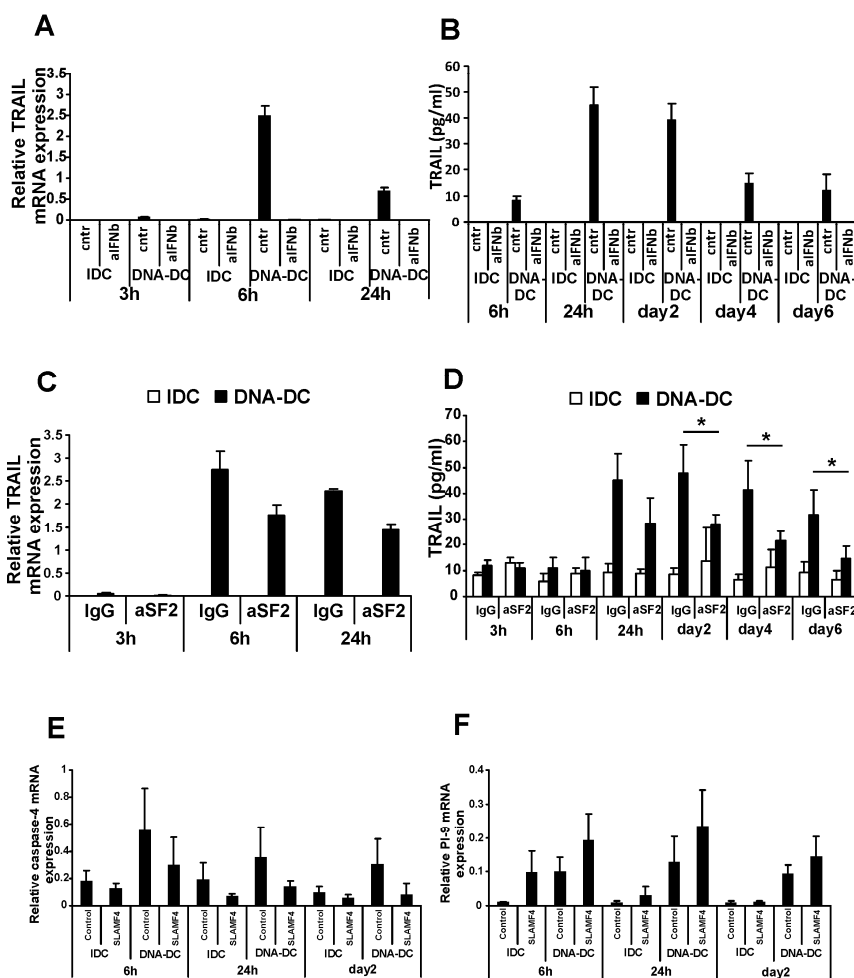


Suppl. Fig. 2. Dendritic cell activation by anti-SLAMF2 antibody or purified

SLAMF4 protein

(A) Cell surface activation molecule expression on IDCs and DNA-DCs treated with the indicated concentrations of immobilized or soluble control IgG or aSLAMF2 antibodies for 24h measured by flow cytometry (n=3). (B) Cell surface activation molecule expression and (C) pro-inflammatory cytokine production of IDCs treated with 5 μ g/ml of control protein or recombinant SLAMF4 protein for 24h (n=3). * $p \leq 0.05$; *** $p \leq 0.005$

Supplementary figure 3



Suppl. Fig 3. Validation of IFN β inhibition by antibody cocktail against IFN β and IFNRA receptor or by anti-SLAMF2 antibody measuring the IFN-inducible molecule TRAIL

(A) Relative TRAIL mRNA expression of IDCs and DNA-DCs treated with control antibodies or with antibody cocktail against IFN β and IFNRA receptor (n=3, one representative experiment shown). (B) TRAIL secretion of the treated DCs was measured by ELISA (n=3). (C) Relative TRAIL mRNA expression of IDCs and DNA-DCs treated with 5 μ g/ml of immobilized control IgG or aSLAMF2 antibodies for the indicated time

points (n=3, one representative experiment shown). (D) TRAIL secretion of the treated DCs was measured by ELISA (n=3). (E) Relative caspase-4 mRNA expression measured on the indicated time points of control or SLAMF4 protein-treated IDCs and DNA-DCs by Q-PCR (n=3). (F) Relative PI-9 mRNA expression measured on the indicated time points of control or SLAMF4 protein-treated IDCs and DNA-DCs by Q-PCR (n=3). * $p \leq 0.05$