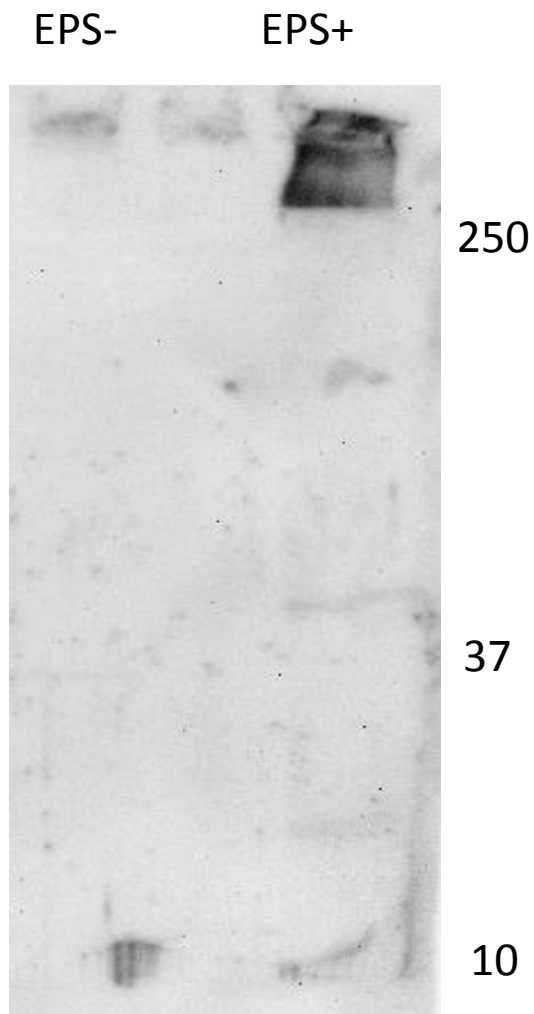


S1. Effect of *B. subtilis* on *C. rodentium*

colonization . Lux+ *C. rodentium* detected by IVIS 3 dpi (A-B) and 6 dpi (D-E) in the presence (B and E) and absence of *B. subtilis* (A and D). No luciferase was detected in uninfected (PBS) control mice (C). These results are representative images from 3 independent experiments with 2-3 mice/experiment.



S2. Analysis of EPS purity.
Western blot analysis of EPS
using rabbit anti-EPS and donkey
anti-rabbit Ig.