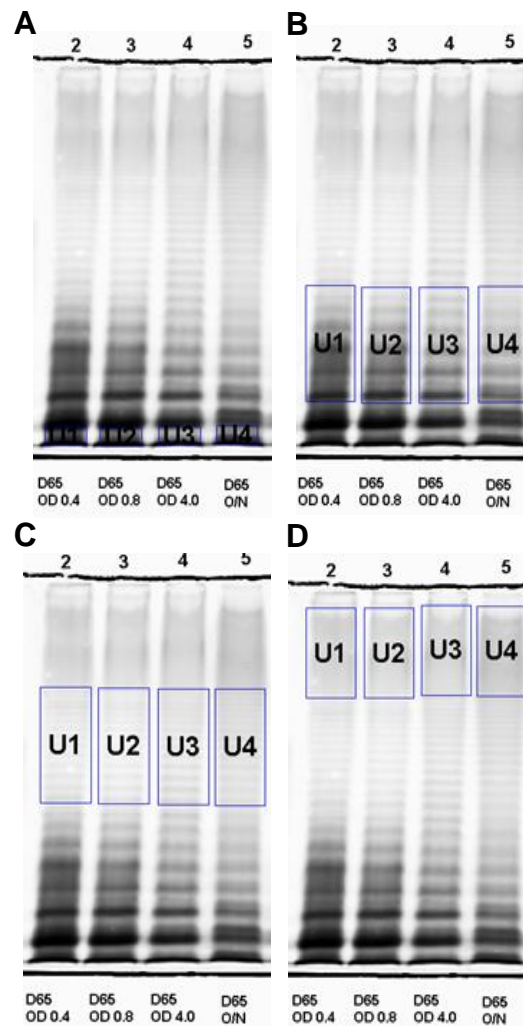


Supplementary Figure 1. Growth curve of *Salmonella* serovars *S. Typhimurium* D65, *S. Enteritidis* R11, *S. Typhi* Ty2 and *S. Paratyphi A* ATCC 9150. Results are mean \pm standard deviation from three independent experiments. ---, OD₆₀₀ 0.4; ----, OD₆₀₀ 0.8; and —, OD₆₀₀ 4.0.



Supplementary Figure 2. Example of LPS gel used for densitometry analysis.

LPS gel with rectangles U1-U4 as the volume of the area measured relative to the background. (A) core, (B) short O Antigen, (C) medium O Antigen, and (D) long O Antigen.