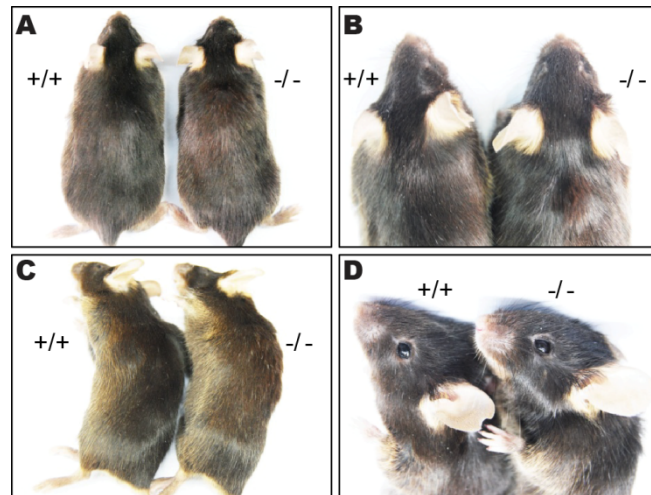


## Supplementary Figure 1



**Figure S1. Normal skin and hair phenotype of old *Fsp27*<sup>-/-</sup> mice**

(A-D) Phenotype of 14-month-old wild-type mice (+/+) and *Fsp27*<sup>-/-</sup> (-/-) mice.

*Fsp27*<sup>-/-</sup> mice showed similar skin and hair phenotype with that of wild type mice

(A-C). Normal eyes of *Fsp27*<sup>-/-</sup> mice were also observed (D).