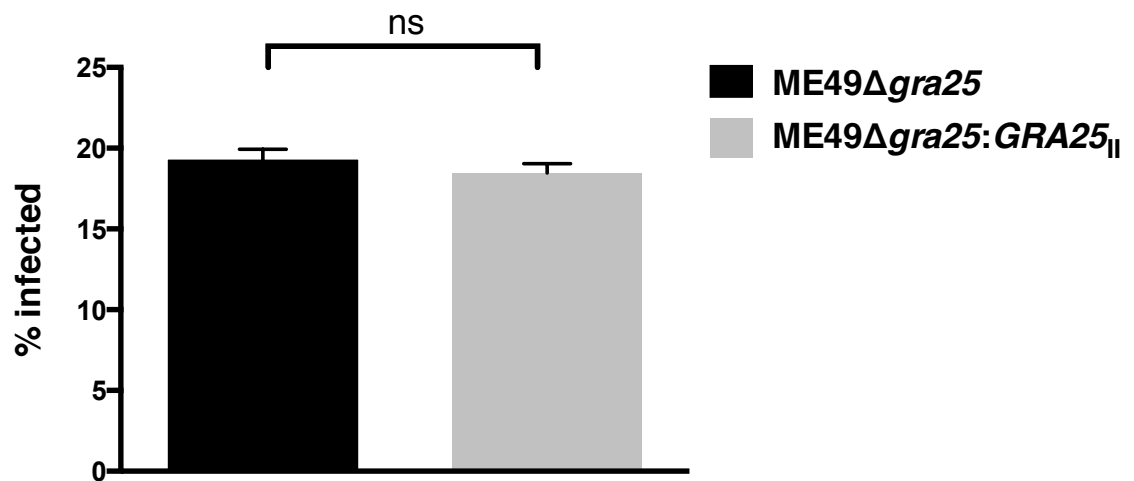
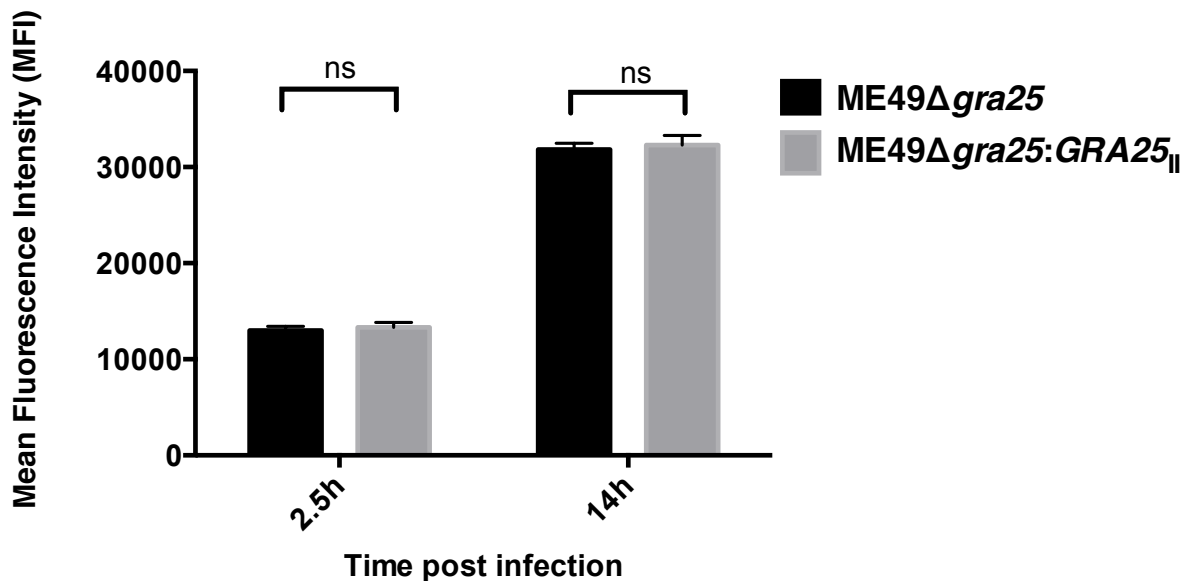


A

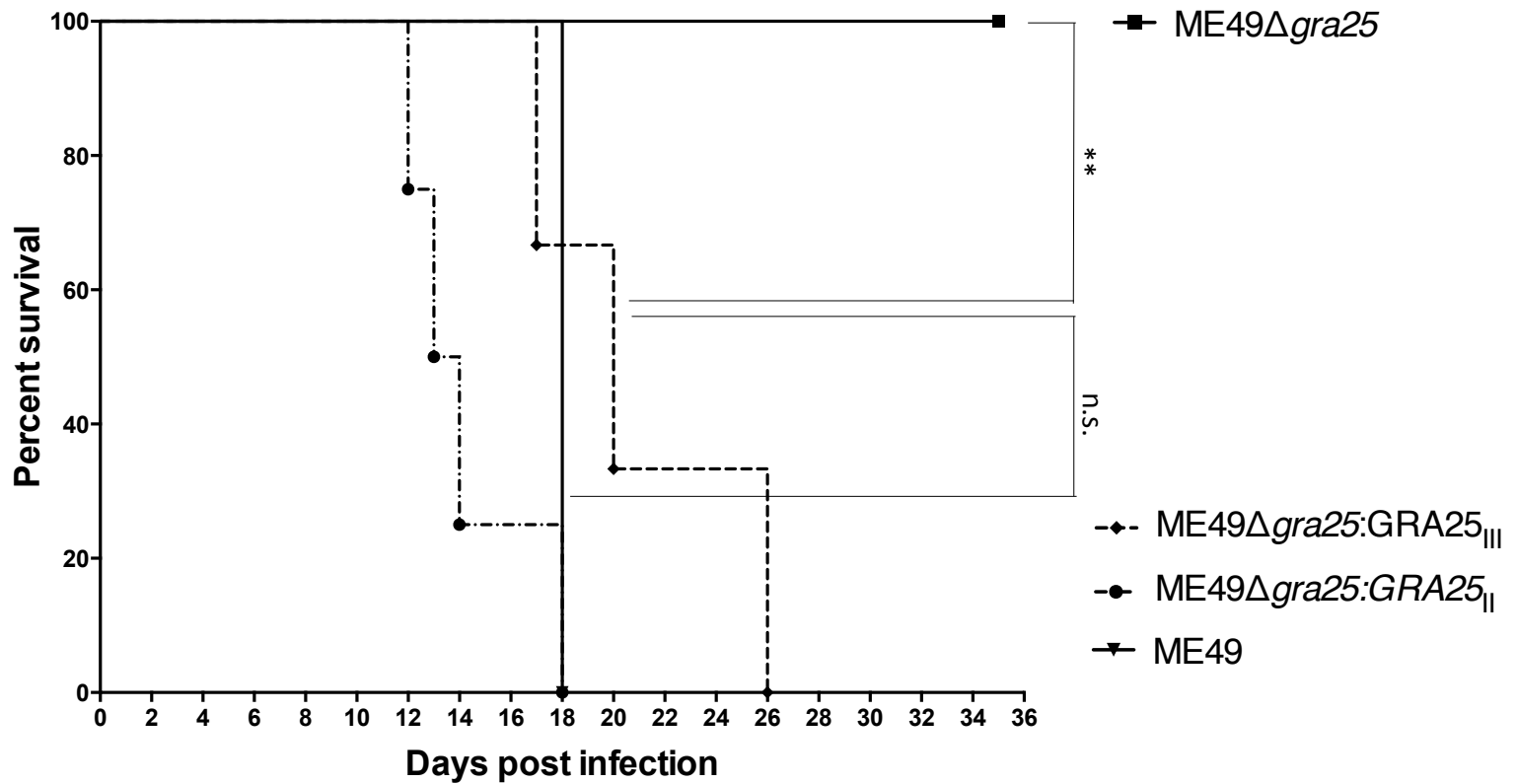


B



Supplemental Figure 1. Absence of GRA25 does not affect infectivity or parasite growth in infected mouse macrophages *in vitro*. **A.** Bone marrow derived macrophages were infected with KO (ME49Δ*gra25*) or complemented (ME49Δ*gra25:GRA25_{II}*) parasites at an MOI of 0.25. At 2.5 hpi, cells were harvested, fixed, and the percent of cells that were infected was quantified by FACS analysis for the mCherry marker expressed by the parasites. **B.** As in A, but cells were harvested at 2.5 hpi and 14 hpi and mean fluorescence intensity (MFI) of all infected cells was measured by FACS analysis. Data are representative of three replicates.

A



Supplemental Figure 2. Complementation with Type III GRA25 increases the virulence of GRA25-deficient parasites. A. Female CBA/J mice were infected i.p. with 500 parental (ME49), KO (ME49Δ*gra25*), complemented Type II (ME49Δ*gra25*:*GRA25*_{II}) or complemented Type III (ME49Δ*gra25*:*GRA25*_{III}) parasites. Survival was monitored each day post infection. Data are representative of two independent experiments. Significance (p) was determined by Log-rank (Mantel-Cox) Test. **, p<.01.