

1 **Supplemental Figure Legends (Tam et al.)**

2

3 **Figure S1, related to Figure 1.** (A) Percentages of CD11b⁺ Gr-1⁺ cells in spleens (left) and
4 livers (right) of 129X1/SvJ mice (n = 4-5 per group per time point) left uninfected (UI) or
5 infected for 7 or 60 days with *S. Typhimurium*. (B) Absolute numbers (left) and percentages
6 (right) of CD11b⁺ Gr-1⁺ cells in spleens of C57BL/6J mice (n = 10 per group) left UI or
7 infected for 7 days with *S. Typhimurium* (STm). Data show mean with spread from a single
8 experiment that is representative of two independent experiments. Data were analyzed using a
9 one-way ANOVA with Bonferroni's multiple comparisons post test (A) or using a two-tailed,
10 paired Student's t-test (B); p values < 0.05 were considered to be statistically significant.
11 Asterisks indicate statistically significant differences (*** p < 0.001, ** p < 0.01, * p < 0.05).

12

13 **Figure S2, related to Figure 3.** (A) Percentages of CD11b⁺ Ly6C^{hi} Ly6G⁻ cells (left) and
14 CD11b⁺ Ly6C^{int} Ly6G⁺ cells (right) in spleens (top) and livers (bottom) of 129X1/SvJ mice (n
15 = 5 per group per time point) left uninfected (UI) or infected for up to 90 days with *S.*
16 *Typhimurium*. (B) Percentages of CD11b⁺ Ly6C^{hi} Ly6G⁻ cells (left) and CD11b⁺ Ly6C^{int}
17 Ly6G⁺ cells (right) in mesenteric lymph nodes of 129X1/SvJ mice (n = 5 per group per time
18 point) left uninfected (UI) or infected for up to 90 days with *S. Typhimurium*. Data show
19 mean with spread (A) or analysis of combined single cell suspensions of mesenteric lymph
20 nodes from five mice per group per time point (B) from a single experiment that is
21 representative of two independent experiments. Data were analyzed using a one-way
22 ANOVA; p values < 0.05 were considered to be statistically significant.

23

24 **Figure S3, related to Figure 7.** (A) Bacterial loads per gram of spleen (left) and liver (right)
25 tissue of 129X1/SvJ mice (n = 4 per group per time point) infected with *S. Typhimurium* for 7
26 days or 22 days. (B) Enumeration of viable intracellular *S. Typhimurium* associated with
27 CD11b⁺ Ly6C^{hi} Ly6G⁻ cells (circles) and CD11b⁺ Ly6C^{int} Ly6G⁺ cells (triangles) purified
28 from spleens (left) and livers (right) of 129X1/SvJ mice (n = 4 per group per time point)
29 infected with *S. Typhimurium* for 7 or 22 days. Purified cells were suspended in medium
30 containing 25 µg/ml of gentamicin to kill extracellular bacteria. After 2 hours of incubation at
31 37°C in 5% CO₂, the cells were washed using PBS and lysed using 0.1% Triton X-100 to
32 release intracellular bacteria. These bacteria were enumerated by plating onto LB agar. Data
33 show mean with spread from a single experiment and were analyzed using a two-tailed, paired
34 Student's t-test (A) or a two-way ANOVA with Bonferroni's post test (B); p values < 0.05
35 were considered to be statistically significant.

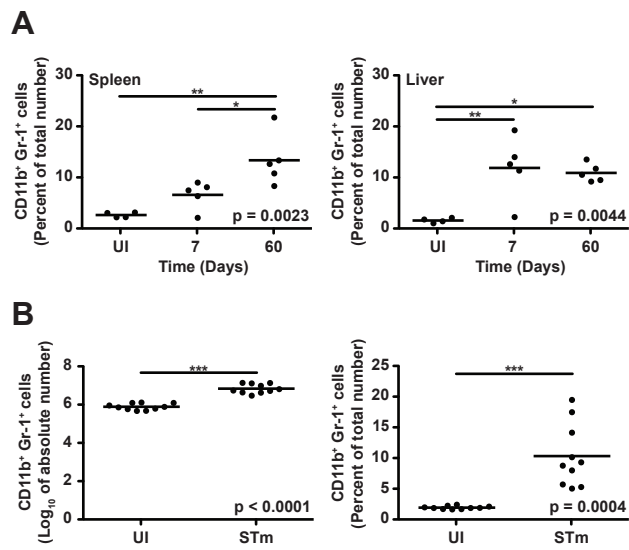
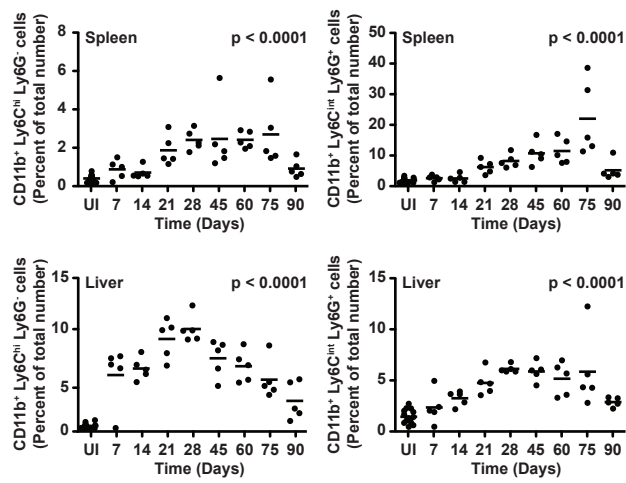
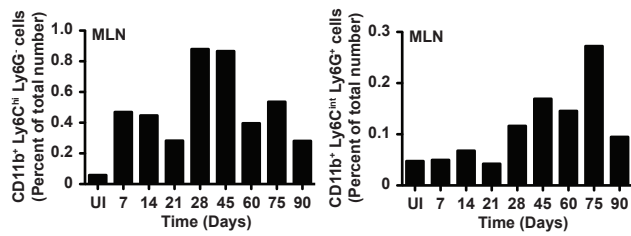


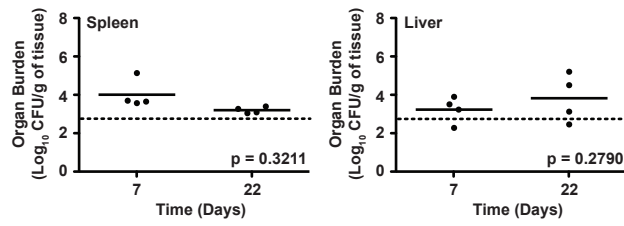
Figure S1, Tam *et al.*

A



B



A**B**