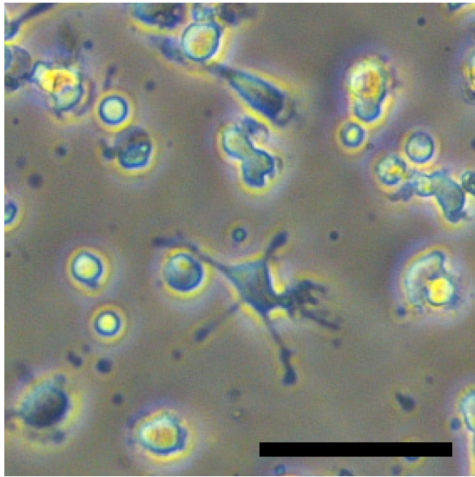


### **Supplementary Data**

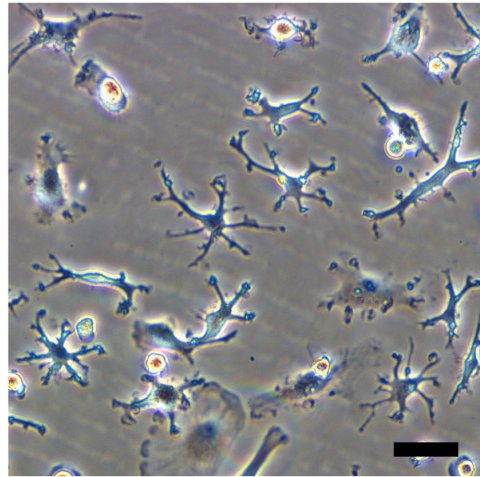
(Masahiro Ohgidani, Takahiro A. Kato, Daiki Setoyama, Noriaki Sagata, Ryota Hashimoto, Kazue Shigenobu, Tetsuhiko Yoshida, Kohei Hayakawa, Norihiro Shimokawa, Daisuke Miura, Hideo Utsumi, Shigenobu Kanba: Direct induction of ramified microglia-like cells from human monocytes: Dynamic microglial dysfunction in Nasu-Hakola disease. *Scientific Reports*)

Supplementary Figure S1

**A**

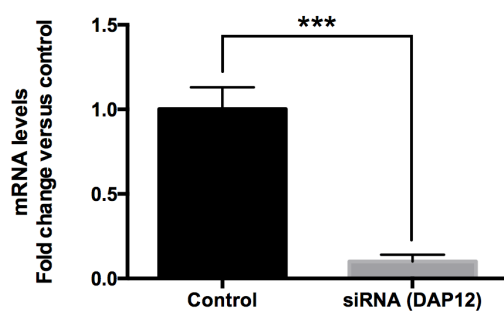


**B**



Supplementary Figure S1. The morphology of iMG cells. In DAY 3, branched cells were observed after the treatment of GM-CSF and IL-34 (A). The iMG cells were survived more than 30 days. The morphology of iMG cells at DAY30 (B). Scale bar, 50  $\mu$ m.

## Supplementary Figure S2



Supplementary Figure S2. DAP12 of the iMG cells from healthy control was successfully downregulated by siRNA (n = 8). \*\*\*P < 0.001. Error bars, SEM.

Supplementary Table S1. qRT-PCR primer sequences used in this study.

Primer	Sequences
HLA-DR-F	5'-TTCAGGAATCAGAAAGGACACTC-3'
HLA-DR-R	5'-TCTGCATTTTCAGCTCAGGAA-3'
CD45-F	5'-AGTCAAAGTTATTGTTATGCTGACAGA-3'
CD45-R	5'-TGCTTTCCTTCTCCCCAGTA-3'
TNF- $\alpha$ -F	5'-CAGCCTCTTCTCCTTCCTGAT-3'
TNF- $\alpha$ -R	5'-GCCAGAGGGCTGATTAGAGA-3'
CCR7-F	5'-GGGGAAACCAATGAAAAGC-3'
CCR7-R	5'-ACCTCATCTTGACACAGGCATA-3'
CCL18-F	5'-ATGGCCCTCTGCTCCTGT-3'
CCL18-R	5'-AATCTGCCAGGAGGTATAGACG-3'
CD200R-F	5'-TGGGATTCATTTGGTTGTTG-3'
CD200R-R	5'-CAACTGGAGTAGATTCTGTTTTATTCA-3'
DAP12-F	5'-GAGACCGAGTCGCCTTATCA-3'
DAP12-R	5'-CTGTGTGTTGAGGTCGCTGT-3'
TREM2-F	5'-TCTGAGAGCTTCGAGGATGC-3'
TREM2-R	5'-GGGGATTTCTCCTTCCAAGA-3'