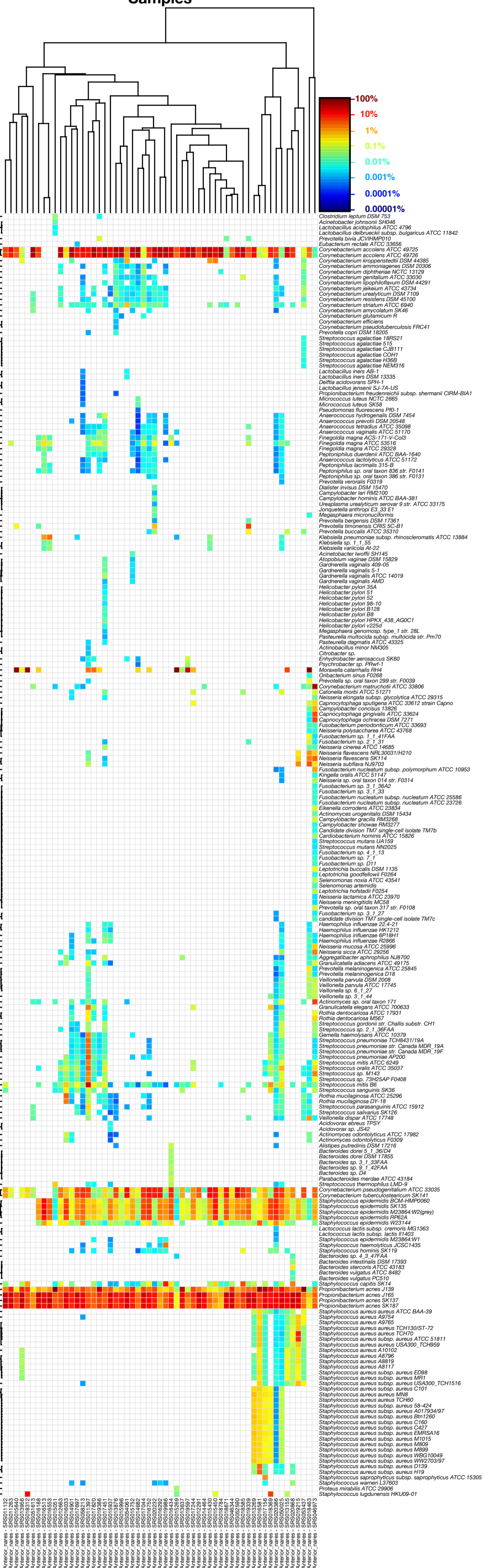


# Samples

# Anterior Nares

# Strains



Samples



Buccal Mucosa

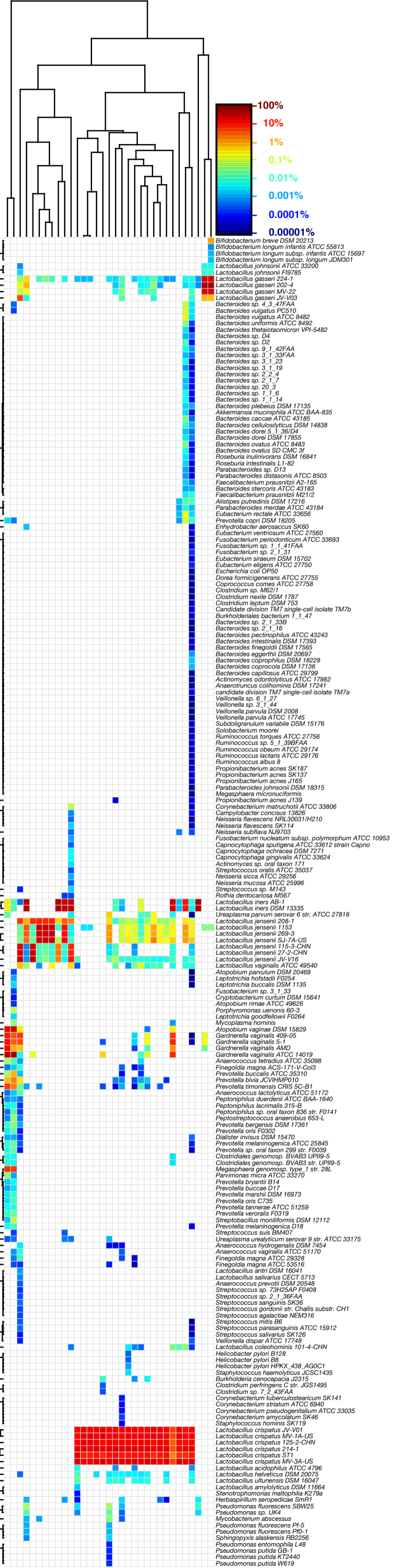
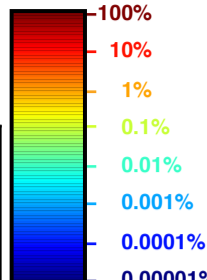
Strains

- Acinetobacter junii SH205
- Fusobacterium sp. D12
- Acidovorax ebreyi TFSY
- Acidovorax sp. JS42
- Alicyclobacillus dentrificans BC
- Acidovorax delafieldii 2AN
- Dechloromonas aromatica RCB
- Deiftia acidovorans SPH-1
- Chromobacterium violaceum ATCC 12472
- Bordetella petrii DSM 12804
- Bordetella pertussis Tohana 1
- Bordetella parapertussis 12822
- Bordetella bronchiseptica H952
- Acromobacter piechaudi ATCC 43553
- Acidovorax avenae subsp. avenae ATCC 19860
- Acidovorax avenae subsp. citrulli AAC00-1
- Azoarcus sp. BH72
- Thiomonas intermedia K12
- Thauera sp. M27
- Herbaspirillum seropedicae SmR1
- Laribacter hongkongensis HLK9
- Ralstonia solanaceae PS107
- Luticola nitroferum 2002
- Methylobacterium patroleophilum PM1
- Ralstonia solanaceae CFBP2957
- Ralstonia solanaceae GM1000
- Ralstonia solanaceae CFBP2957
- Alistipes putredinis DSM 17216
- Bacteroides uniformis ATCC 8492
- Bacteroides sp. 4\_3\_47FA
- Bacteroides vulgatus ATCC 8482
- Bacteroides vulgatus PC510
- Eubacterium rectale ATCC 33656
- Bacteroides caccae ATCC 43185
- Bacteroides coprophilus DSM 18228
- Bacteroides ovatus ATCC 3483
- Bacteroides ovatus SD CMC 3f
- Bacteroides pectinophilus ATCC 43243
- Bacteroides sp. D2
- Faecalibacterium prausnitzii A2-165
- Faecalibacterium prausnitzii M21/2
- Clostridium sp. M62/1
- Eubacterium eligens ATCC 27750
- Roseburia inulinivorans DSM 16841
- Bacteroides stercoris ATCC 43183
- Bacteroides finegoldii DSM 17565
- Bacteroides sp. 1\_1\_5
- Parabacteroides merdae ATCC 43184
- Bacteroides cellulosilyticus DSM 14838
- Bacteroides dorei DSM 17355
- Bacteroides sp. 9\_1\_42FAA
- Bacteroides dorei 5\_1\_36/D4
- Bacteroides sp. 3\_1\_33FAA
- Bacteroides sp. D4
- Bacteroides sp. 1\_1\_14
- Bacteroides sp. 2\_1\_33B
- Bacteroides sp. 2\_1\_7
- Bacteroides sp. 3\_1\_19
- Bacteroides thetaiotaomicron VPI-5482
- Parabacteroides distans ATCC 8503
- Parabacteroides sp. D13
- Bacteroides sylvaticus SD CC 1b
- Bacteroides sp. D1
- Bacteroides sp. 3\_2\_5
- Bacteroides capillosus ATCC 29799
- Bacteroides fragilis 638R
- Bacteroides fragilis JH48
- Bacteroides ovatus SD CC 2a
- Bacteroides sp. 2\_1\_16
- Bacteroides sp. 3\_1\_25
- Subdoligranulum variable DSM 15176
- Parabacteroides bacterium 1\_1\_47
- Clostridium sp. SS2/1
- Coprococcus comes ATCC 27758
- Dorea longicatena DSM 13614
- Eubacterium hallii DSM 3353
- Eubacterium ventriosum ATCC 27560
- Ruminococcus obeum ATCC 29174
- Ruminococcus sp. 5\_1\_39BFAA
- Bacteroides sp. 2\_2\_4
- Clostridium sp. L2-50
- Clostridium nexile DSM 1787
- Dorea formicigenerans ATCC 27755
- Ruminococcus lactus ATCC 29176
- Roseburia intestinalis L1-82
- Propionibacterium acnes J139
- Propionibacterium acnes 1165
- Propionibacterium acnes SK137
- Propionibacterium acnes SK187
- Blautia sp.
- Flavobacterium bacterium BAL38
- Candidatus Sulcia muelleri DSM
- Candidatus Sulcia muelleri str. Hc
- Staphylococcus capitis SK14
- Bacteroides plebeius DSM 17135
- Bacteroides sp. 20\_3
- Bacteroides coprocola DSM 17136
- Bacteroides coprocola DSM 20697
- Bacteroides fragilis 3\_1\_12
- Bacteroides intestinalis DSM 17393
- Parabacteroides johnsonii DSM 18315
- Finnegoldia magna ATCC 53516
- Enterococcus faecalis ATCC 29200
- Enterococcus faecalis TX 086
- Flavobacterium psychrophilum JIP02/86
- Enterococcus faecium DO
- Enterococcus faecalis TM 222
- Baumannia cicadellinicola str. Hc
- Vibrio fischeri M11
- Polaribacter sp. MED152
- Providencia alcalifaciens DSM 30120
- Providencia rettgeri DSM 1131
- Providencia rustriana DSM 4541
- Providencia stuartii ATCC 25827
- Psychromonas sp. CNP73
- Butyrivibrio crossii DSM 2876
- Bifidobacterium dentium ATCC 27678
- Bifidobacterium dentium ATCC 27679
- Bifidobacterium dentium Bd1
- Campylobacter hominis ATCC BAA-381
- Lactobacillus multicauda subsp. bulgaricus ATCC 11842
- Lactobacillus delbrueckii subsp. bulgaricus PB2003/044-T3-4
- Mitsuokella multicauda DSM 20544
- Cryptobacterium curvum DSM 15641
- Slackia exigua ATCC 700122
- Lactobacillus anti DSM 16041
- Scardovia inornata F0304
- Olsenella uli DSM 7084
- Parascardovia dentitolicus F0305
- Akkermansia muciniphila ATCC BAA-835
- Collinsella aerofaciens ATCC 25986
- Clostridium scindens ATCC 35704
- Eubacterium saproterum ATCC 49899
- Fusobacterium sp. 3\_1\_5R
- Candidate division TM7 genomosp. GTL1
- Seibacella termidis ATCC 33285
- Campylobacter curvus 525.92
- Fusobacterium gonoliformans ATCC 25563
- Ruminococcus lactus ATCC 51172
- Streptobacillus moniliformis DSM 12112
- Prevotella bryantii B14
- Prevotella copri DSM 18205
- Prevotella ruminicola 23
- Megasphaera genomosp. type 1 str. 28L
- Pectoniphilus duerdenii ATCC BAA-1640
- Pectoniphilus lacrimalis 315-B
- Actinomyces sp. oral taxon 648 str. F0332
- Cardiobacterium hominis ATCC 15826
- Capnocytophaga ochracea DSM 7271
- Capnocytophaga gingivae ATCC 33624
- Capnocytophaga sputigena ATCC 33612 strain Capno
- Eikenella corrodens ATCC 23834
- Corynebacterium jeikeium ATCC 33806
- Campylobacter gracilis RM3268
- Prevotella sp. oral taxon 317 str. F0108
- Selenomonas sp. ATCC 35370
- Selenomonas sputigena ATCC 35185
- Selenomonas artemidis
- Candidate division TM7 single-cell isolate TM7b
- Candidate division TM7 single-cell isolate TM7c
- Leptotrichia buccalis DSM 11135
- Leptotrichia rostrata F025
- Candidate division TM7 single-cell isolate TM7a
- Eubacterium yuni magdalenae ATCC 43715
- Bacteroides extrache W1219
- Pectoniphilus sp. oral taxon 386 str. F0131
- Bacteroides oral taxon 274 str. F0058
- Bacteroides sp. F0058
- Campylobacter rectus RM3267
- Campylobacter sibiricus RM3277
- Prevotella sp. oral taxon 472 str. F0295
- Fusobacterium nucleatum subsp. polymorphum ATCC 10953
- Fusobacterium nucleatum subsp. nucleatum ATCC 23726
- Fusobacterium nucleatum subsp. nucleatum ATCC 25586
- Fusobacterium sp. 3\_1\_27
- Fusobacterium sp. 4\_1\_13
- Fusobacterium sp. 3\_1\_36A2
- Fusobacterium sp. 3\_1\_33
- Fusobacterium sp. D11
- Leptotrichia coelestium F0264
- Oribacterium sp. oral taxon 078 str. F0262
- Fusobacterium periodonticum ATCC 33693
- Fusobacterium sp. 1\_1\_41FA
- Fusobacterium sp. 2\_1\_31
- Prevotella sp. oral taxon 239 str. F0039
- Pectoniphilus sp. oral taxon 252 str. F0039
- Atopodium rimae ATCC 49626
- Dialister invisus DSM 15470
- Prevotella oris C735
- Prevotella oris F0302
- Shuttleworthia satelles DSM 14600
- Prevotella bivia JCVHMP010
- Prevotella buccae D17
- Prevotella maritima DSM 16973
- Prevotella bergensis DSM 17361
- Prevotella buccalis ATCC 35310
- Prevotella timonensis DSM 50\_81
- Abiotrophia defectiva ATCC 49176
- Fillifactor alovis ATCC 35896
- Treponema vincentii ATCC 35580
- Porphyromonas endodontalis ATCC 35406
- Treponema denticola ATCC 35405
- Revivomonas micro ATCC 35370
- Prevotella tannerae ATCC 51259
- Campylobacter concisus 13823
- Atopodium parvum DSM 20469
- Megasphaera micronuciformis
- Prevotella melaninogenica ATCC 25845
- Prevotella melaninogenica D19
- Prevotella veroralis F0319
- Veillonella dispar ATCC 1748
- Oribacterium sinus F0268
- Solobacterium moorei
- Streptococcus parangonyxis ATCC 15912
- Selenomonas flueggii ATCC 43531
- Selenomonas sp. 67H26BP F0410
- Streptococcus salivarius SK125
- Streptococcus thermophilus LMD-9
- Actinomyces sp. oral taxon 177
- Actinomyces israelii DSM 15434
- Rothia dentocariosa ATCC 17931
- Rothia dentocariosa M567
- Kristella oralis ATCC 51147
- Streptococcus sanguinis SK36
- Granulicatella adiacans ATCC 49175
- Actinomyces odontolyticus ATCC 17982
- Actinomyces odontolyticus F0309
- Veillonella parvula DSM 2028
- Veillonella parvula ATCC 1745
- Veillonella sp. 3\_1\_44
- Veillonella sp. 6\_1\_27
- Streptococcus gordoni str. Challis substr. CH1
- Streptococcus sp. 2\_1\_36FAA
- Rothia mucilaginosa ATCC 25296
- Rothia mucilaginosa DY-18
- Brachybacterium faecium DSM 4810
- Treponema phagedenis (bio-type Kazan 5)
- Propionibacterium freudenreichii subsp. shermanii CIRM-BIA1
- Kocuria rhizophila DC201
- Cellulomonas flavescens DSM 20109
- Xylanimonas cellulolytica DSM 15894
- Sanguibacter keddiei DSM 10542
- Aggregatibacter actinomycetemcomitans D1S-1
- Aggregatibacter aphrophilus NJ8700
- Actinobacillus pleuropneumoniae serovar 1 str. 4074
- Actinobacillus pleuropneumoniae serovar 7 str. APF76
- Mannheimia haemolytica serovar A2 str. OVNE
- Haemophilus ducreyi 35000HP
- Haemophilus somnus 2336
- Actinobacillus succinogenes 1302
- Mannheimia succiniciproducens MBEL55E
- Pasteurella digmatis ATCC 43325
- Pasteurella multocida subsp. multocida str. Pm70
- Haemophilus influenzae 22-4-21
- Haemophilus influenzae BR181
- Haemophilus influenzae HF1212
- Haemophilus influenzae R2866
- Chryseobacterium gleum ATCC 35910
- Flavobacteriaceae bacterium 3519-10
- Neisseria flavescens NPL30031/H210
- Neisseria meningitidis SK114
- Neisseria subflava NJ9703
- Neisseria elongata subsp. glycolytica ATCC 29315
- Neisseria meningitidis ATCC 49619
- Neisseria meningitidis NCCP11945
- Neisseria gonorrhoeae F62
- Neisseria meningitidis 1207
- Neisseria meningitidis 50108
- Neisseria meningitidis ATCC 13091
- Neisseria meningitidis 015
- Neisseria meningitidis MC58
- Neisseria lactamica ATCC 23970
- Neisseria polysaccharica ATCC 43768
- Neisseria mucosa ATCC 25996
- Neisseria sicca ATCC 29524 str. F0314
- Simonsiella muelleri ATCC 29453
- Catonella morb ATCC 51212/TC
- Streptococcus agalactiae ATCC 100633
- Porphyromonas gingivalis ATCC 33277
- Porphyromonas lenis 60-3
- Lactococcus lactis subsp. cremoris MG1363
- Proteus mirabilis ATCC 29906
- Proteus penneri ATCC 35198
- Ruminococcus gnavus ATCC 29149
- Clostridiales genomosp. BVAB3 str. UPII9-5
- Finnegoldia magna ATCC 51212/JC
- Clostridiales genomosp. BVAB3 str. UPII9-5
- Pectoniphilus sp. oral taxon 836 str. F0141
- Streptococcus gallolyticus ATCC 33404
- Streptococcus agalactiae 515
- Streptococcus agalactiae CB1111
- Streptococcus gallolyticus TX20005
- Ureaplasma urealyticum serovar 9 str. ATCC 33175
- Streptococcus suis BM407
- Streptococcus agalactiae CQH1
- Streptococcus equi subsp. zoeepidemicus
- Streptococcus agalactiae H369
- Streptococcus agalactiae M5416
- Streptococcus infantarius subsp. infantarius ATCC BAA-102
- Streptococcus bovis ATCC 700338
- Streptococcus dysgalactiae subsp. equisimilis GGS\_124
- Streptococcus uberis 0140J
- Streptococcus suis 05HAG3
- Streptococcus equi subsp. equi 4047
- Streptococcus pyogenes JGAS10750
- Streptococcus pyogenes ATCC 10782
- Streptococcus mutans NN2020
- Streptococcus mutans UA159
- Streptococcus agalactiae 18R521
- Lactococcus lactis subsp. lactis I11403
- Lactococcus lactis subsp. lactis KF147
- Listeria monocytogenes 08-5575
- Listeria monocytogenes 08-5923
- Listeria monocytogenes J0161
- Lactobacillus helveticus DSM 20075
- Coprococcus euctactus ATCC 27759
- Gemella haemolytans ATCC 10379
- Helicobacter pylori str. Sheeba
- Helicobacter pylori 35A
- Helicobacter pylori 51
- Helicobacter pylori 52
- Helicobacter pylori 98-10
- Helicobacter pylori B128
- Helicobacter pylori 58
- Helicobacter pylori HPKX\_438\_AGOC1
- Helicobacter pylori VZ55D
- Streptococcus mitis 86
- Streptococcus pneumoniae AF200
- Streptococcus pneumoniae TN3431/19A
- Streptococcus pneumoniae str. Canada MDR\_19A
- Streptococcus pneumoniae str. Canada MDR\_19F
- Methylobacterium radiotolerans JCM 2831
- Acinetobacter johnsonii SH046
- Streptococcus oralis ATCC 35037
- Streptococcus mitis ATCC 8229
- Streptococcus sp. 73H25AP F0408
- Streptococcus sp. M143
- Staphylococcus hominis SK119

# Samples

## Posterior Fornix

## Strains



Posterior\_fornix - SRS013542  
Posterior\_fornix - SRS017497  
Posterior\_fornix - SRS011269  
Posterior\_fornix - SRS015225  
Posterior\_fornix - SRS011884  
Posterior\_fornix - SRS012934  
Posterior\_fornix - SRS012930  
Posterior\_fornix - SRS022545  
Posterior\_fornix - SRS042428  
Posterior\_fornix - SRS050184  
Posterior\_fornix - SRS0119054  
Posterior\_fornix - SRS016516  
Posterior\_fornix - SRS016559  
Posterior\_fornix - SRS019600  
Posterior\_fornix - SRS020349  
Posterior\_fornix - SRS0119054  
Posterior\_fornix - SRS016191  
Posterior\_fornix - SRS017520  
Posterior\_fornix - SRS017700  
Posterior\_fornix - SRS015168  
Posterior\_fornix - SRS021958  
Posterior\_fornix - SRS021959  
Posterior\_fornix - SRS056695  
Posterior\_fornix - SRS057807  
Posterior\_fornix - SRS051505  
Posterior\_fornix - SRS018769  
Posterior\_fornix - SRS016784  
Posterior\_fornix - SRS016784  
Posterior\_fornix - SRS016111  
Posterior\_fornix - SRS019379  
Posterior\_fornix - SRS022734

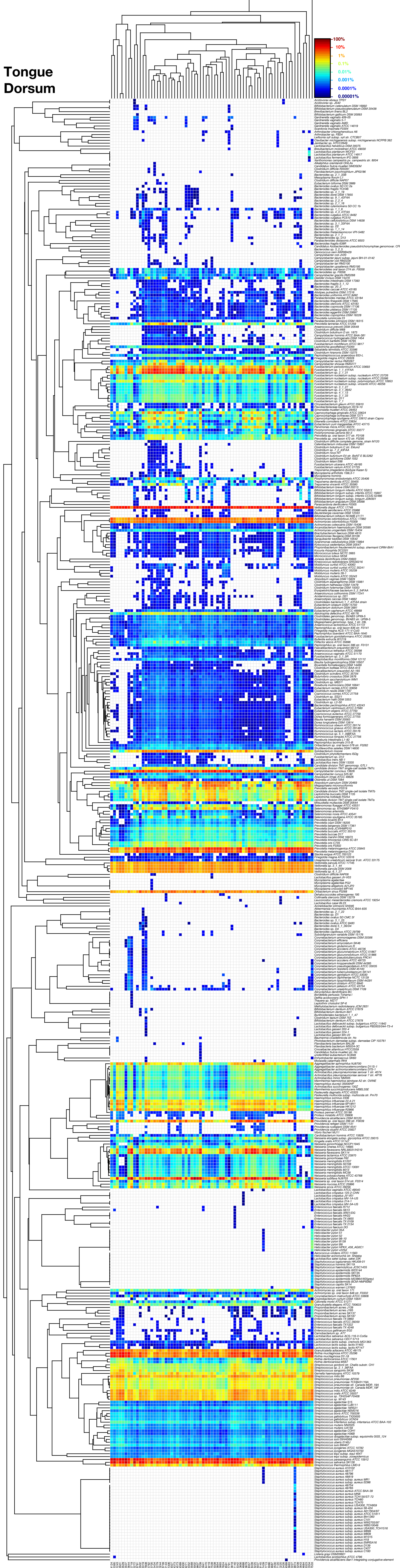
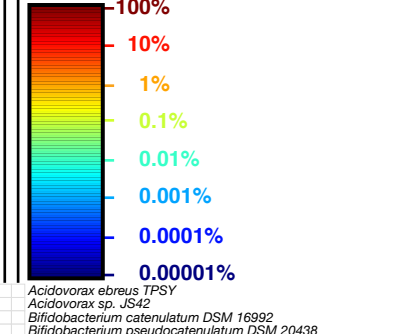
- Bifidobacterium breve* DSM 20213
- Bifidobacterium longum infantis* ATCC 55813
- Bifidobacterium longum* subsp. *infantis* ATCC 15687
- Bifidobacterium longum* subsp. *longum* JDM301
- Lactobacillus johnsonii* ATCC 33200
- Lactobacillus johnsonii* F19785
- Lactobacillus gasseri* 224-1
- Lactobacillus gasseri* MV-22
- Lactobacillus gasseri* JV-V03
- Bacteroides* sp. 4\_3\_47FAA
- Bacteroides vulgatus* PC510
- Bacteroides vulgatus* ATCC 8482
- Bacteroides uniformis* ATCC 8492
- Pseudomonas thetaiotomicon* VPI-5482
- Bacteroides* sp. D4
- Bacteroides* sp. D2
- Bacteroides* sp. 9\_1\_42FAA
- Bacteroides* sp. 3\_1\_33FAA
- Bacteroides* sp. 3\_1\_23
- Bacteroides* sp. 3\_1\_19
- Bacteroides* sp. 2\_2\_4
- Bacteroides* sp. 2\_1\_7
- Bacteroides* sp. 20\_3
- Bacteroides* sp. 1\_1\_6
- Bacteroides* sp. 1\_1\_4
- Bacteroides plebeius* DSM 17135
- Akkermansia muciniphila* ATCC BAA-835
- Bacteroides caccae* ATCC 43185
- Bacteroides cellulosilyticus* DSM 14838
- Bacteroides dorei* 5\_1\_36/D4
- Bacteroides dorei* DSM 17855
- Bacteroides ovatus* ATCC 8483
- Bacteroides ovatus* SD CMC 3f
- Roseburia inulinivorans* DSM 16841
- Roseburia intestinalis* L1-82
- Parabacteroides* sp. D13
- Parabacteroides distansoni* ATCC 8503
- Faecalibacterium prausnitzii* A2-165
- Bacteroides stercoris* ATCC 43183
- Faecalibacterium prausnitzii* M21/2
- Alistipes putredinis* DSM 17216
- Parabacteroides merdae* ATCC 43184
- Eubacterium rectale* ATCC 33856
- Prevotella copri* DSM 18205
- Enhydrobacter aerosaccus* SK60
- Eubacterium ventriosum* ATCC 27560
- Fusobacterium periodonticum* ATCC 33693
- Fusobacterium* sp. 1\_1\_41FAA
- Fusobacterium* sp. 2\_1\_31
- Eubacterium siraeum* DSM 15702
- Eubacterium eligens* ATCC 27750
- Escherichia coli* OP50
- Dorea formicigenerans* ATCC 27755
- Coprococcus comes* ATCC 27758
- Clostridium* sp. M62/1
- Clostridium nexile* DSM 1787
- Clostridium leptum* DSM 753
- Candidate division TM7 single-cell isolate TM7b
- Burkholderiales bacterium* 1\_1\_47
- Bacteroides* sp. 2\_1\_33B
- Bacteroides* sp. 2\_1\_16
- Bacteroides pectinophilus* ATCC 43243
- Bacteroides intestinalis* DSM 17393
- Bacteroides finegoldii* DSM 17565
- Bacteroides eggertii* DSM 20697
- Bacteroides coprophilus* DSM 18228
- Bacteroides coprocola* DSM 17136
- Bacteroides capillusatus* ATCC 29799
- Actinomyces odontolyticus* ATCC 17982
- Anaerotruncus colihominis* DSM 17241
- Candidate division TM7 single-cell isolate TM7a
- Veillonella* sp. 6\_1\_27
- Veillonella* sp. 3\_1\_24
- Veillonella parvula* DSM 2008
- Veillonella parvula* ATCC 17745
- Subdoligranulum variabile* DSM 15176
- Solobacterium moorei*
- Ruminococcus torques* ATCC 27756
- Ruminococcus* sp. 5\_1\_39BFAA
- Ruminococcus obeum* ATCC 29174
- Ruminococcus lactaris* ATCC 29176
- Ruminococcus albus* 8
- Propionibacterium acnes* SK187
- Propionibacterium acnes* SK137
- Propionibacterium acnes* J165
- Parabacteroides johnsonii* DSM 18315
- Megasphaera micronucliformis*
- Propionibacterium acnes* J139
- Corynebacterium matruchotii* ATCC 33806
- Campylobacter concisus* 13826
- Neisseria flavescens* NRL30031/H210
- Neisseria flavescens* SK 14
- Neisseria subflava* N4703
- Fusobacterium nucleatum* subsp. *polymorphum* ATCC 10953
- Capnocytophaga sputigena* ATCC 33612 strain Capno
- Capnocytophaga ochracea* DSM 7271
- Capnocytophaga gingivalis* ATCC 33624
- Actinomyces* sp. oral taxon 171
- Streptococcus oralis* ATCC 35037
- Neisseria sicca* ATCC 29256
- Neisseria mucosa* ATCC 25996
- Streptococcus* sp. M143
- Rothia dentocariosa* M567
- Lactobacillus iners* AB-1
- Lactobacillus iners* DSM 13335
- Ureaplasma parvum* serovar 6 str. ATCC 27818
- Lactobacillus jensenii* 208-1
- Lactobacillus jensenii* 1153
- Lactobacillus jensenii* 269-3
- Lactobacillus jensenii* SJ-74-US
- Lactobacillus jensenii* 115-3-CHN
- Lactobacillus jensenii* 27-2-CHN
- Lactobacillus jensenii* JV-V16
- Lactobacillus vaginalis* ATCC 49540
- Atopobium parvulum* DSM 20469
- Leptotrichia hofstadii* F0254
- Leptotrichia buccalis* DSM 1135
- Fusobacterium* sp. 3\_1\_33
- Cryptobacterium curtum* DSM 15641
- Atopobium rimae* ATCC 49626
- Porphyromonas uenonis* 60-3
- Leptotrichia goodfellowii* F0264
- Mycoplasma hominis*
- Atopobium vaginae* DSM 15829
- Gardnerella vaginalis* 409-05
- Gardnerella vaginalis* 5-1
- Gardnerella vaginalis* AMD
- Gardnerella vaginalis* ATCC 14019
- Anaerococcus tetradis* ATCC 35098
- Fingoldia magna* ACS-171-V-Co/3
- Prevotella buccalis* ATCC 35310
- Prevotella bivia* JCVHMP010
- Prevotella timonensis* CRIS 5C-B1
- Anaerococcus lactolyticus* ATCC 51172
- Peptoniphilus queredeni* ATCC BAA-1640
- Peptoniphilus lacrimalis* 315-B
- Peptoniphilus* sp. oral taxon 836 str. F0141
- Peptostreptococcus anaerobius* 653-L
- Prevotella bergensis* DSM 17361
- Prevotella oris* F0302
- Dialister invisus* DSM 15470
- Prevotella melaninogenica* ATCC 25845
- Prevotella* sp. oral taxon 299 str. F0039
- Clostridiales* genomsp. BVAB3 UPII9-5
- Clostridiales* genomsp. BVAB3 str. UPII9-5
- Megasphaera* genomsp. type\_1 str. 28L
- Parvimonas micro* ATCC 33270
- Prevotella bryantii* B14
- Prevotella buccae* D17
- Prevotella marshii* DSM 16973
- Prevotella oris* C735
- Prevotella tannerae* ATCC 51259
- Prevotella veroralis* F0319
- Streptobacillus moniliformis* DSM 12112
- Prevotella melaninogenica* D18
- Streptococcus suis* BM407
- Ureaplasma urealyticum* serovar 9 str. ATCC 33175
- Anaerococcus hydrogenalis* DSM 7454
- Anaerococcus vaginalis* ATCC 51170
- Fingoldia magna* ATCC 29328
- Fingoldia magna* ATCC 53516
- Lactobacillus antri* DSM 16041
- Lactobacillus salivarius* CECT 5713
- Anaerococcus prevotii* DSM 20548
- Streptococcus* sp. 73H2SA/F0408
- Streptococcus* sp. 2\_1\_36FAA
- Streptococcus sanguinis* SK36
- Streptococcus gordonii* str. *Challis* substr. CH1
- Streptococcus agalactiae* NEM316
- Streptococcus mitis* B6
- Streptococcus parasanguinis* ATCC 15912
- Streptococcus salivarius* SK126
- Veillonella dispar* ATCC 17748
- Lactobacillus coleohominis* 101-4-CHN
- Helicobacter pylori* B128
- Helicobacter pylori* HPKX\_438\_AG0C1
- Staphylococcus haemolyticus* JCSC1435
- Burkholderia cenocepacia* J2315
- Clostridium perfringens* C str. JGS1495
- Clostridium* sp. 7\_2\_43FAA
- Corynebacterium tuberculostearicum* SK141
- Corynebacterium striatum* ATCC 6940
- Corynebacterium pseudogenitaleum* ATCC 33035
- Corynebacterium amycolatum* SK46
- Staphylococcus hominis* SK119
- Lactobacillus crispatus* JV-V01
- Lactobacillus crispatus* MV-1A-US
- Lactobacillus crispatus* 125-2-CHN
- Lactobacillus crispatus* 714
- Lactobacillus crispatus* ST1
- Lactobacillus crispatus* MV-3A-US
- Lactobacillus acidophilus* ATCC 4796
- Lactobacillus helveticus* DSM 20075
- Lactobacillus utahensis* DSM 16047
- Lactobacillus amylicus* DSM 11664
- Stenotrophomonas maltophilia* K279a
- Herbaspirillum seropedicae* SmR1
- Pseudomonas fluorescens* SBW25
- Pseudomonas* sp. UK4
- Mycobacterium abscessus*
- Pseudomonas* sp. Pf-5
- Pseudomonas fluorescens* Pf0-1
- Sphingopyxis alaskensis* RB2256
- Pseudomonas entomophila* L48
- Pseudomonas putida* GB-1
- Pseudomonas putida* KT2440
- Pseudomonas putida* W619





Samples

Tongue  
Dorsum



Strains

Tongue\_dorsum\_98501124  
Tongue\_dorsum\_98501125  
Tongue\_dorsum\_98501126  
Tongue\_dorsum\_98501127  
Tongue\_dorsum\_98501128  
Tongue\_dorsum\_98501129  
Tongue\_dorsum\_98501130  
Tongue\_dorsum\_98501131  
Tongue\_dorsum\_98501132  
Tongue\_dorsum\_98501133  
Tongue\_dorsum\_98501134  
Tongue\_dorsum\_98501135  
Tongue\_dorsum\_98501136  
Tongue\_dorsum\_98501137  
Tongue\_dorsum\_98501138  
Tongue\_dorsum\_98501139  
Tongue\_dorsum\_98501140  
Tongue\_dorsum\_98501141  
Tongue\_dorsum\_98501142  
Tongue\_dorsum\_98501143  
Tongue\_dorsum\_98501144  
Tongue\_dorsum\_98501145  
Tongue\_dorsum\_98501146  
Tongue\_dorsum\_98501147  
Tongue\_dorsum\_98501148  
Tongue\_dorsum\_98501149  
Tongue\_dorsum\_98501150  
Tongue\_dorsum\_98501151  
Tongue\_dorsum\_98501152  
Tongue\_dorsum\_98501153  
Tongue\_dorsum\_98501154  
Tongue\_dorsum\_98501155  
Tongue\_dorsum\_98501156  
Tongue\_dorsum\_98501157  
Tongue\_dorsum\_98501158  
Tongue\_dorsum\_98501159  
Tongue\_dorsum\_98501160  
Tongue\_dorsum\_98501161  
Tongue\_dorsum\_98501162  
Tongue\_dorsum\_98501163  
Tongue\_dorsum\_98501164  
Tongue\_dorsum\_98501165  
Tongue\_dorsum\_98501166  
Tongue\_dorsum\_98501167  
Tongue\_dorsum\_98501168  
Tongue\_dorsum\_98501169  
Tongue\_dorsum\_98501170  
Tongue\_dorsum\_98501171  
Tongue\_dorsum\_98501172  
Tongue\_dorsum\_98501173  
Tongue\_dorsum\_98501174  
Tongue\_dorsum\_98501175  
Tongue\_dorsum\_98501176  
Tongue\_dorsum\_98501177  
Tongue\_dorsum\_98501178  
Tongue\_dorsum\_98501179  
Tongue\_dorsum\_98501180  
Tongue\_dorsum\_98501181  
Tongue\_dorsum\_98501182  
Tongue\_dorsum\_98501183  
Tongue\_dorsum\_98501184  
Tongue\_dorsum\_98501185  
Tongue\_dorsum\_98501186  
Tongue\_dorsum\_98501187  
Tongue\_dorsum\_98501188  
Tongue\_dorsum\_98501189  
Tongue\_dorsum\_98501190  
Tongue\_dorsum\_98501191  
Tongue\_dorsum\_98501192  
Tongue\_dorsum\_98501193  
Tongue\_dorsum\_98501194  
Tongue\_dorsum\_98501195  
Tongue\_dorsum\_98501196  
Tongue\_dorsum\_98501197  
Tongue\_dorsum\_98501198  
Tongue\_dorsum\_98501199  
Tongue\_dorsum\_98501200