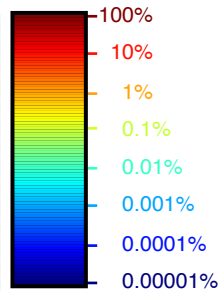
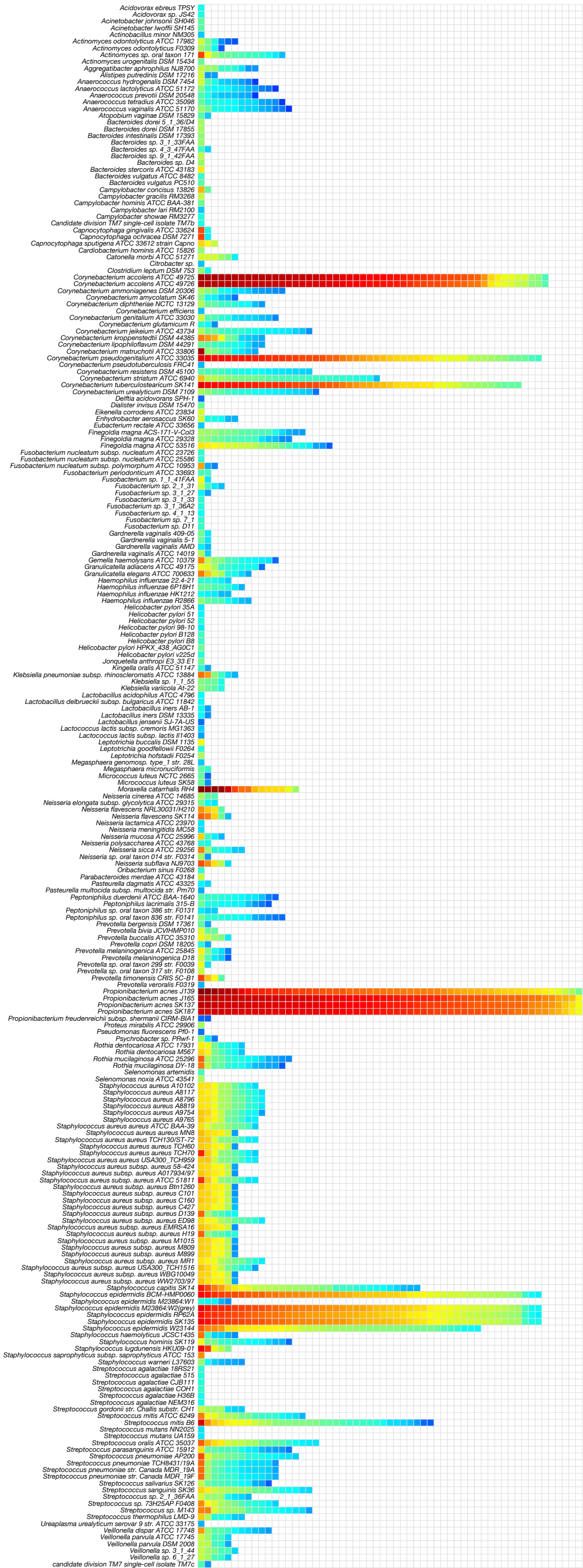


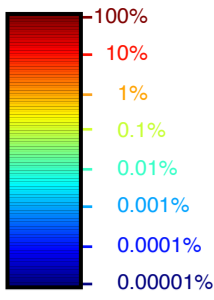
# Anterior Nares



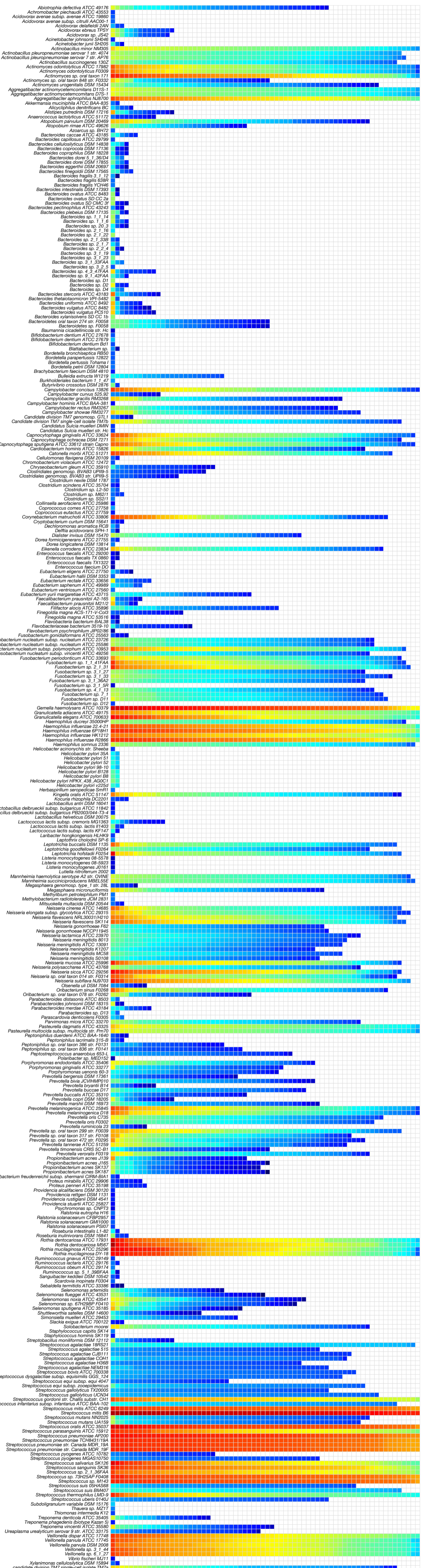
## Strains



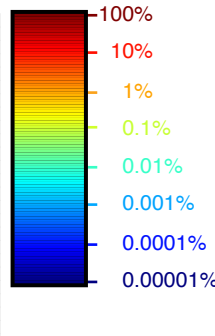
# Buccal Mucosa



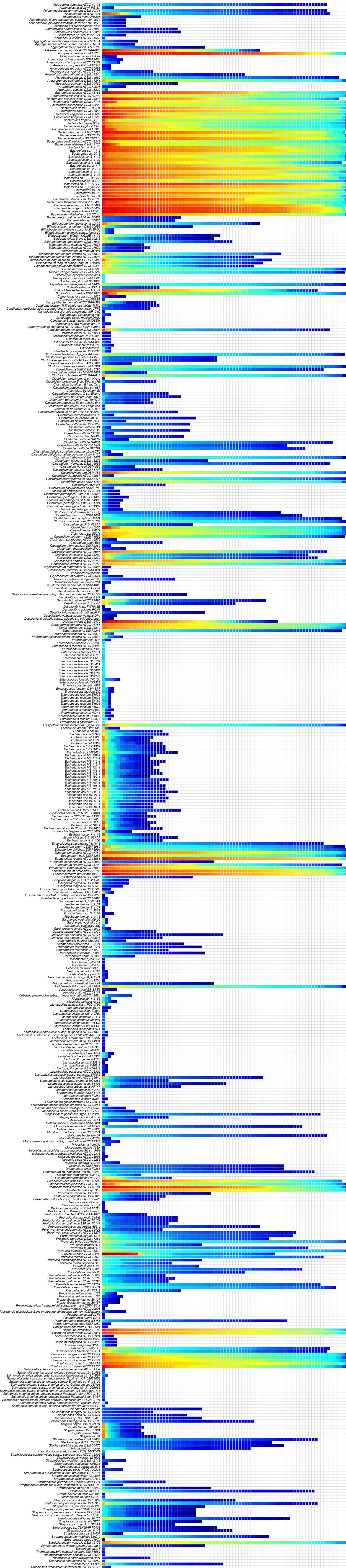
## Strains



# Stool



## Strains



100%  
10%  
1%  
0.1%  
0.01%  
0.001%  
0.0001%  
0.00001%

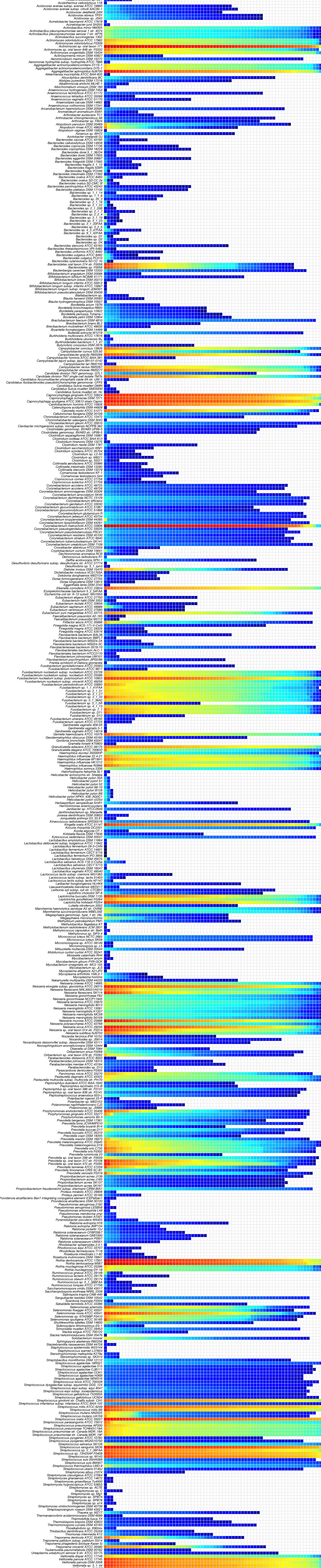
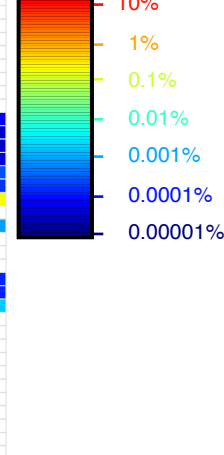
100%  
10%  
1%  
0.1%  
0.01%  
0.001%  
0.0001%  
0.00001%

# Posterior Fornix

Strains



# Supragingival Plaque



Strains

