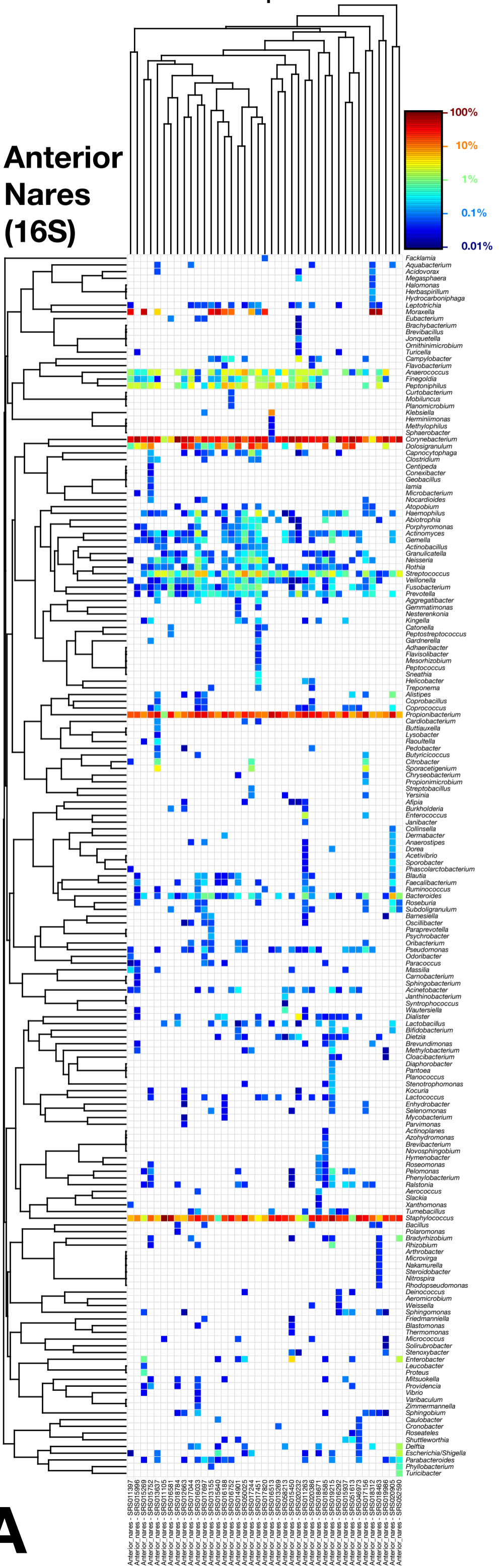


Samples

Anterior Nares (16S)

Genera

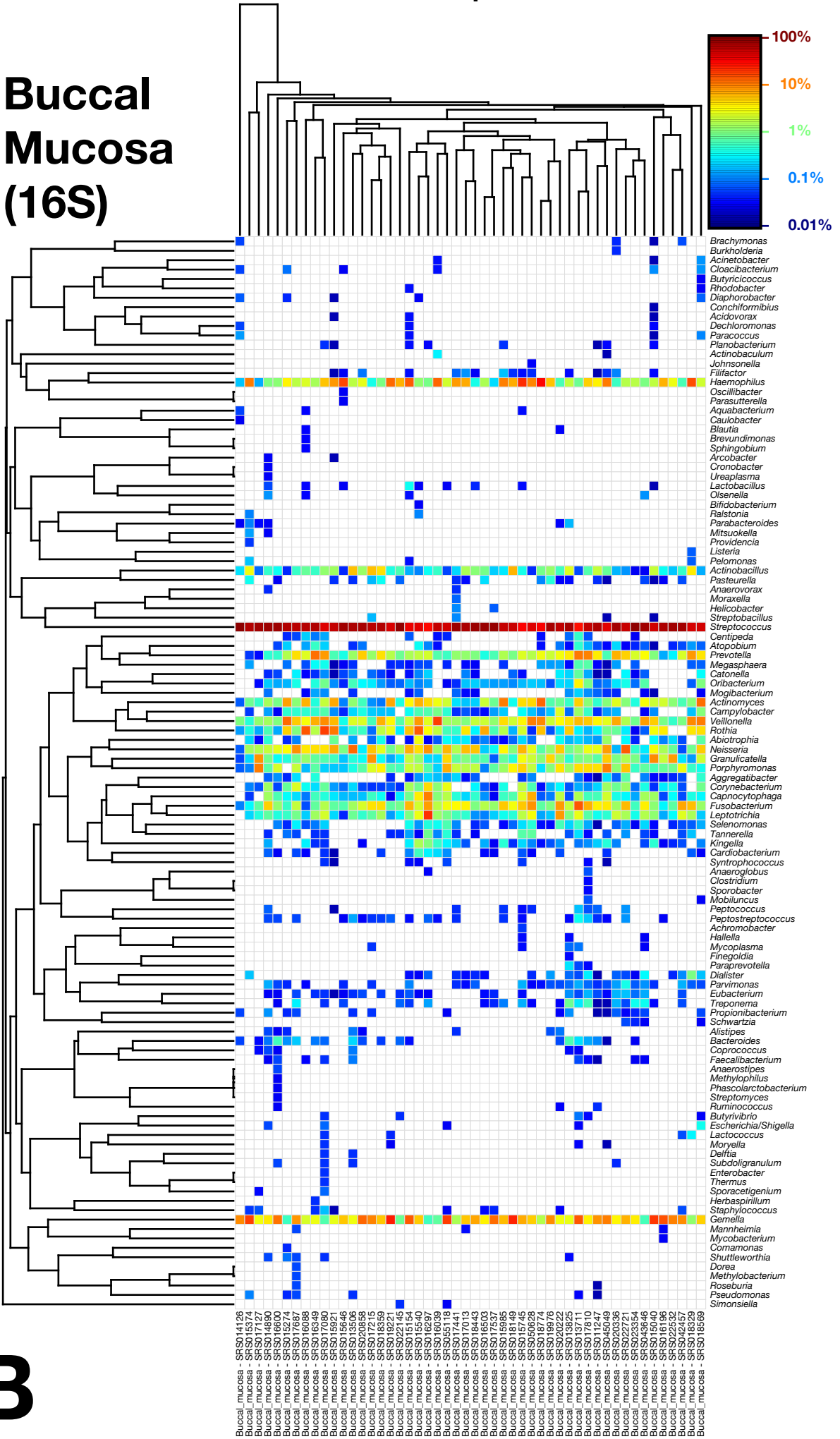
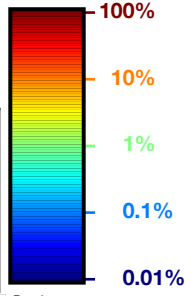
A



Samples

Buccal Mucosa (16S)

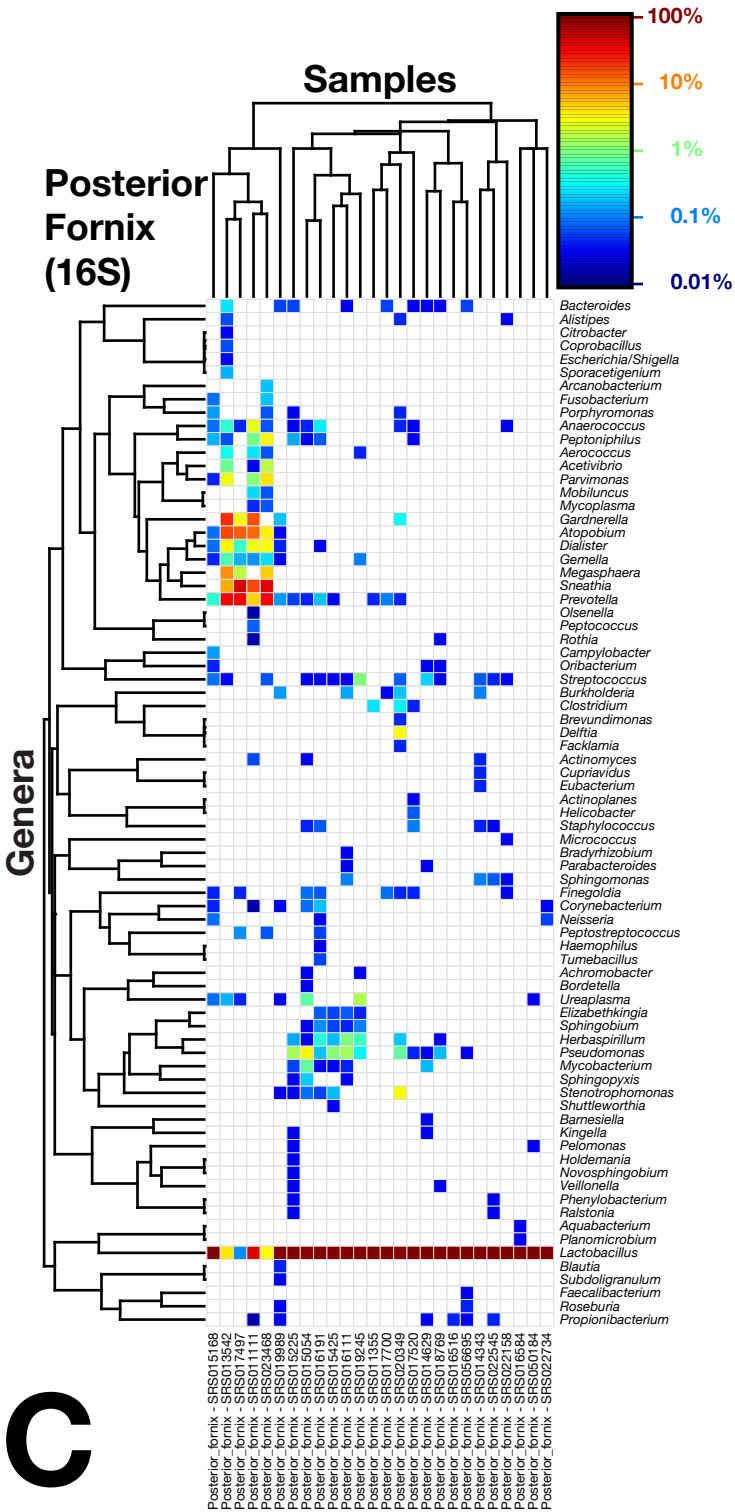
Genera



B

- Brachymonas*
- Burkholderia*
- Acinetobacter*
- Cloacibacterium*
- Butyrivibrio*
- Rhodobacter*
- Diaphorobacter*
- Conchiformibius*
- Acidovorax*
- Dechloromonas*
- Paracoccus*
- Pianobacterium*
- Actinobaculum*
- Johnsonella*
- Filifactor*
- Haemophilus*
- Oscillibacter*
- Parasutterella*
- Aquabacterium*
- Caulobacter*
- Blautia*
- Brevundimonas*
- Springobium*
- Arcobacter*
- Cronobacter*
- Ureaplasma*
- Lactobacillus*
- Olsenella*
- Blifodobacterium*
- Ralstonia*
- Parabacteroides*
- Mitsuokella*
- Providencia*
- Listeria*
- Pelomonas*
- Actinobacillus*
- Pasteurella*
- Anaerovorax*
- Moraxella*
- Helicobacter*
- Streptobacillus*
- Streptococcus*
- Centipeda*
- Atopobium*
- Prevotella*
- Megasphaera*
- Catonella*
- Oribacterium*
- Mogibacterium*
- Actinomyces*
- Campylobacter*
- Veillonella*
- Rothia*
- Abiotrophia*
- Neisseria*
- Granulicatella*
- Porphyromonas*
- Aggregatibacter*
- Corynebacterium*
- Campyloptophaga*
- Fusobacterium*
- Leptotrichia*
- Selenomonas*
- Tannerella*
- Kingella*
- Capnobacterium*
- Syntrophococcus*
- Anaeroglobus*
- Clostridium*
- Sporobacter*
- Mobiluncus*
- Peptococcus*
- Peptostreptococcus*
- Achromobacter*
- Hallella*
- Mycoplasma*
- Finnegoldia*
- Paraprevotella*
- Dialister*
- Parvimonas*
- Eubacterium*
- Treponema*
- Propionibacterium*
- Schwartzia*
- Alistipes*
- Bacteroides*
- Coprococcus*
- Faecalibacterium*
- Anaerostipes*
- Methylophilus*
- Phascolarctobacterium*
- Streptomyces*
- Ruminococcus*
- Butyrivibrio*
- Escherichia/Shigella*
- Lactococcus*
- Moryella*
- Delftia*
- Subdoligranulum*
- Enterobacter*
- Thermus*
- Sporocystigenium*
- Herbaspirillum*
- Staphylococcus*
- Gemella*
- Mannheimia*
- Mycobacterium*
- Comamonas*
- Shuttleworthia*
- Dorea*
- Methylobacterium*
- Roseburia*
- Pseudomonas*
- Simonsiella*

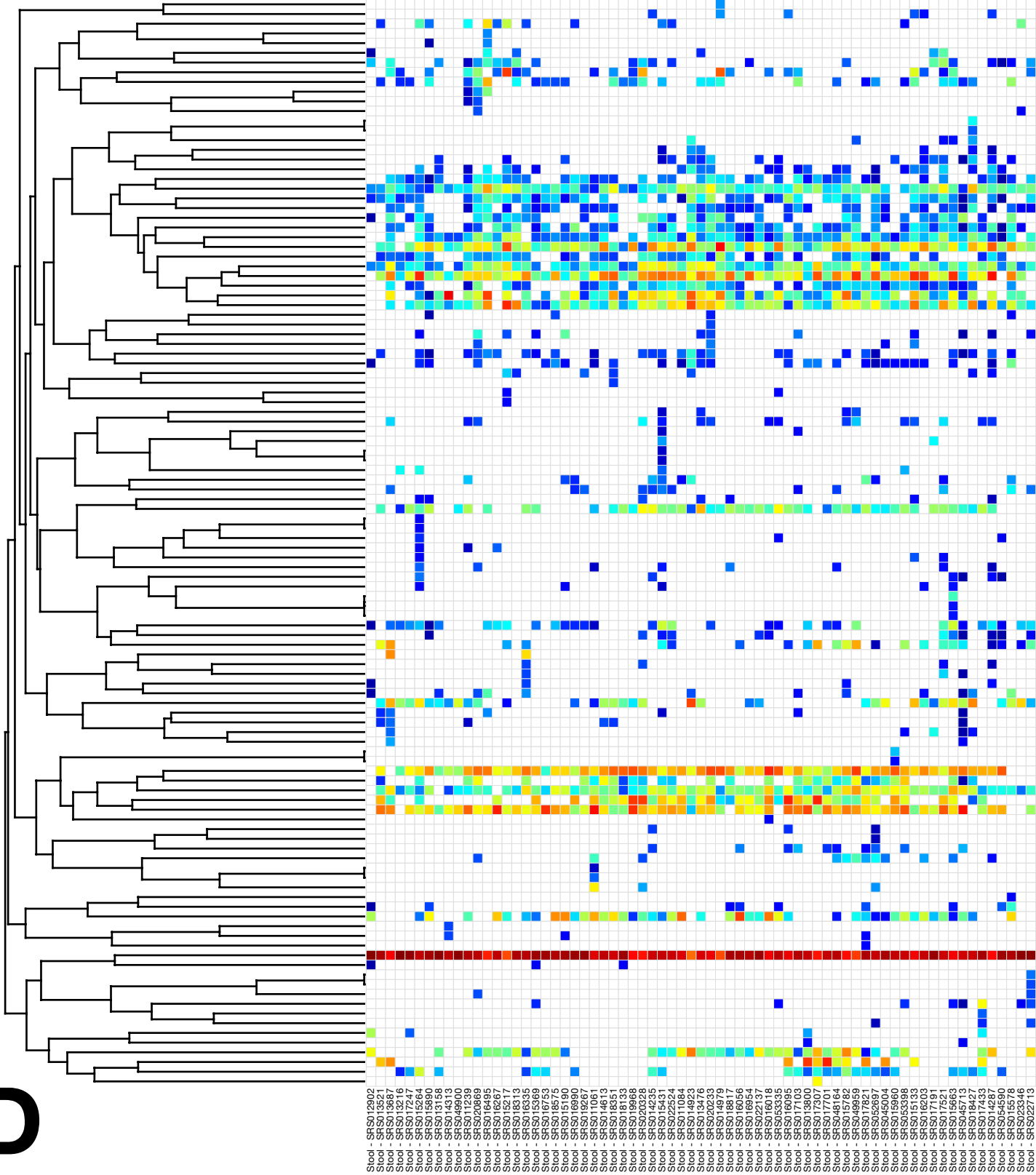
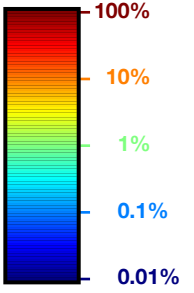
- Buccal_mucosa - SFS014126
- Buccal_mucosa - SFS015374
- Buccal_mucosa - SFS017127
- Buccal_mucosa - SFS016690
- Buccal_mucosa - SFS016890
- Buccal_mucosa - SFS015274
- Buccal_mucosa - SFS017687
- Buccal_mucosa - SFS016088
- Buccal_mucosa - SFS016349
- Buccal_mucosa - SFS015920
- Buccal_mucosa - SFS015921
- Buccal_mucosa - SFS015646
- Buccal_mucosa - SFS013506
- Buccal_mucosa - SFS020858
- Buccal_mucosa - SFS017215
- Buccal_mucosa - SFS016297
- Buccal_mucosa - SFS019929
- Buccal_mucosa - SFS020145
- Buccal_mucosa - SFS015154
- Buccal_mucosa - SFS015540
- Buccal_mucosa - SFS016297
- Buccal_mucosa - SFS019918
- Buccal_mucosa - SFS017441
- Buccal_mucosa - SFS017013
- Buccal_mucosa - SFS018443
- Buccal_mucosa - SFS016503
- Buccal_mucosa - SFS015985
- Buccal_mucosa - SFS018149
- Buccal_mucosa - SFS015745
- Buccal_mucosa - SFS050628
- Buccal_mucosa - SFS018774
- Buccal_mucosa - SFS020222
- Buccal_mucosa - SFS013825
- Buccal_mucosa - SFS013711
- Buccal_mucosa - SFS017810
- Buccal_mucosa - SFS014526
- Buccal_mucosa - SFS020396
- Buccal_mucosa - SFS020271
- Buccal_mucosa - SFS023354
- Buccal_mucosa - SFS043646
- Buccal_mucosa - SFS016146
- Buccal_mucosa - SFS022632
- Buccal_mucosa - SFS042457
- Buccal_mucosa - SFS018329
- Buccal_mucosa - SFS018569



Stool (16S)

Samples

Genera



- Acetitomaculum
- Desulfovibrio
- Acidaminococcus
- Citrobacter
- Gordonibacter
- Cronobacter
- Escherichia/Shigella
- Akkermansia
- Bifidobacterium
- Enterococcus
- Methanobrevibacter
- Lactococcus
- Buttiauxella
- Enterobacter
- Howardella
- Anaerofilum
- Papillibacter
- Holdemania
- Anaerostipes
- Blautia
- Coprobacillus
- Streptococcus
- Collinsella
- Butyrivibrio
- Dorea
- Roseburia
- Acetivibrio
- Coprococcus
- Faecalibacterium
- Sporobacter
- Ruminococcus
- Subdoligranulum
- Actinobacillus
- Pseudobutyrvibrio
- Lactobacillus
- Oxalobacter
- Anaerovorax
- Veillonella
- Eggerthella
- Ornithinimicrobium
- Oribacterium
- Varibaculum
- Allisonella
- Anaerotruncus
- Dehalobacter
- Catenibacterium
- Enhydrobacter
- Streptobacillus
- Megasphaera
- Clostridium
- Sporacetigenium
- Actinomycetes
- Odoribacter
- Abiotrophia
- Aggregatibacter
- Neisseria
- Rothia
- Peptoniphilus
- Peptococcus
- Capnocytophaga
- Corynebacterium
- Anaeroplasma
- Xylanibacter
- Robinsoniella
- Eubacterium
- Porphyromonas
- Prevotella
- Asteroleplasma
- Anaerofustis
- Campylobacter
- Gemella
- Turicibacter
- Dialister
- Ethanoligenens
- Hydrogenanaerobacterium
- Klebsiella
- Slackia
- Brachyspira
- Leptotrichia
- Alistipes
- Butyrivibrios
- Oscillibacter
- Barnesiella
- Parabacteroides
- Planobacterium
- Cloacibacillus
- Enterorhabdus
- Victivallis
- Acetanaerobacterium
- Sneathia
- Tannerella
- Succinoclasticum
- Asaccharobacter
- Haemophilus
- Parasutterella
- Acidovorax
- Propionibacterium
- Sarcina
- Bacteroides
- Granulicatella
- Anaerococcus
- Finnegoldia
- Parvimonas
- Fusobacterium
- Mycoplasma
- Peptostreptococcus
- Megamonas
- Rikenella
- Phascolarctobacterium
- Paraprevotella
- Sutterella
- Succinivibrio

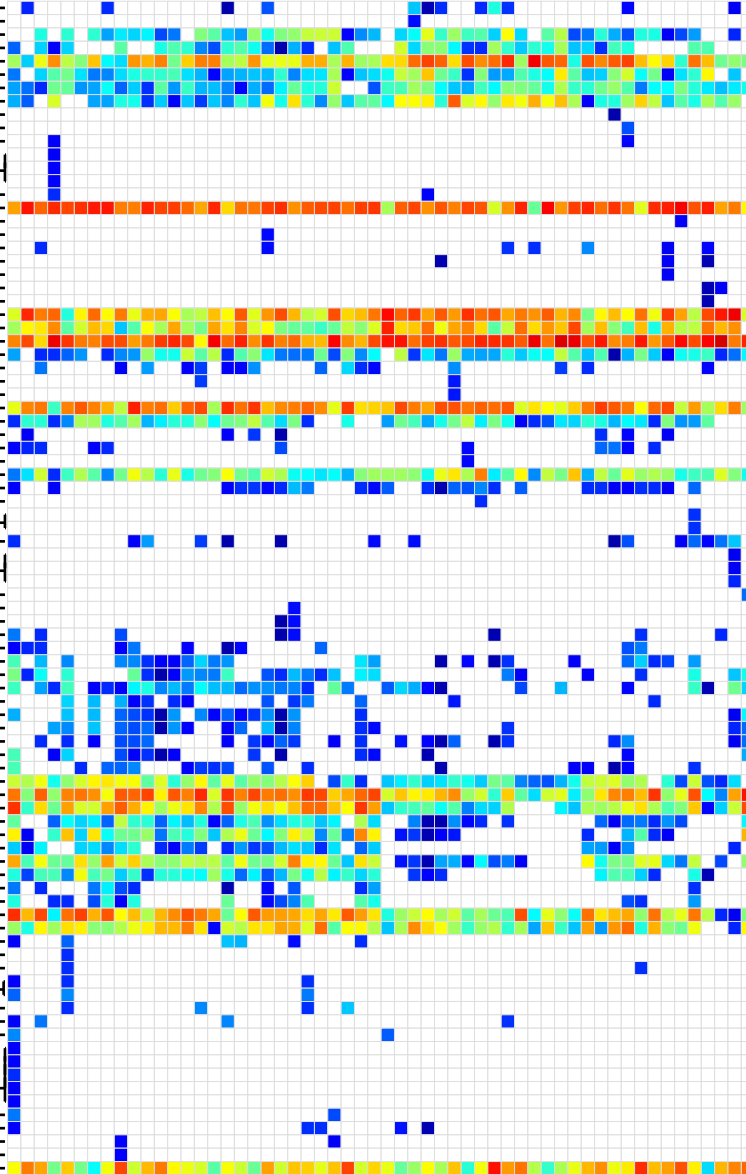
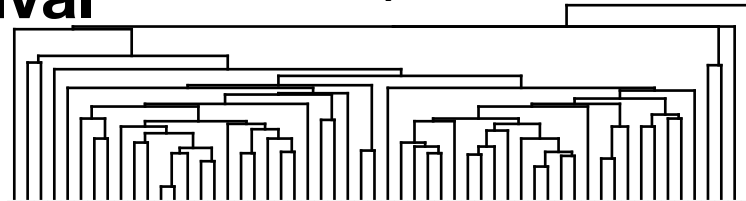
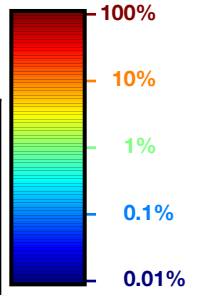
D

Stool - SF5S012902
 Stool - SF5S013521
 Stool - SF5S013687
 Stool - SF5S013816
 Stool - SF5S017247
 Stool - SF5S015896
 Stool - SF5S013158
 Stool - SF5S014313
 Stool - SF5S049800
 Stool - SF5S011239
 Stool - SF5S016495
 Stool - SF5S016267
 Stool - SF5S015217
 Stool - SF5S018313
 Stool - SF5S016335
 Stool - SF5S017247
 Stool - SF5S016253
 Stool - SF5S018575
 Stool - SF5S015190
 Stool - SF5S016890
 Stool - SF5S019267
 Stool - SF5S014613
 Stool - SF5S018351
 Stool - SF5S018133
 Stool - SF5S019868
 Stool - SF5S020228
 Stool - SF5S015431
 Stool - SF5S022524
 Stool - SF5S011084
 Stool - SF5S014923
 Stool - SF5S020228
 Stool - SF5S020228
 Stool - SF5S014879
 Stool - SF5S018817
 Stool - SF5S016954
 Stool - SF5S016017
 Stool - SF5S015918
 Stool - SF5S053335
 Stool - SF5S016095
 Stool - SF5S017103
 Stool - SF5S013600
 Stool - SF5S015133
 Stool - SF5S015203
 Stool - SF5S017247
 Stool - SF5S017247
 Stool - SF5S015663
 Stool - SF5S045713
 Stool - SF5S019427
 Stool - SF5S017432
 Stool - SF5S045690
 Stool - SF5S015578
 Stool - SF5S023346
 Stool - SF5S022713

Supragingival Plaque (16S)

Samples

Genera



- Actinobaculum*
- Collinsella*
- Aggregatibacter*
- Abiotrophia*
- Neisseria*
- Gemella*
- Granulicatella*
- Haemophilus*
- Mannheimia*
- Oscillibacter*
- Parasutterella*
- Comamonas*
- Paludibacter*
- Phascolarctobacterium*
- Staphylococcus*
- Corynebacterium*
- Lactococcus*
- Anaerococcus*
- Lactobacillus*
- Cloacibacterium*
- Herbaspirillum*
- Odoribacter*
- Ralstonia*
- Actinomyces*
- Rothia*
- Streptococcus*
- Actinobacillus*
- Pasteurella*
- Moraxella*
- Salinicoccus*
- Campylobacter*
- Cardiobacterium*
- Bergeriella*
- Syntrophococcus*
- Paracoccus*
- Kingella*
- Planobacterium*
- Thermopulsispora*
- Alistipes*
- Barnesiella*
- Bacteroides*
- Diaphorobacter*
- Faecalibacterium*
- Parabacteroides*
- Anaerovorax*
- Alysiella*
- Pelomonas*
- Mogibacterium*
- Megasphaera*
- Oribacterium*
- Dialister*
- Parvimonas*
- Johnsonella*
- Eubacterium*
- Peptococcus*
- Filiifactor*
- Peptostreptococcus*
- Atopobium*
- Campylobacter*
- Fusobacterium*
- Prevotella*
- Catonella*
- Treponema*
- Centipeda*
- Selenomonas*
- Tannerella*
- Olsenella*
- Schwartzia*
- Leptotrichia*
- Porphyromonas*
- Mycoplasma*
- Bulleidia*
- Pseudomonas*
- Cryptobacterium*
- Shuttleworthia*
- Propionivibrio*
- Anaeroglobus*
- Moryella*
- Desulfotulbus*
- Paraprevotella*
- Pseudoramibacter*
- Sharpea*
- Solobacterium*
- Phocaeicola*
- Propionibacterium*
- Hallella*
- Slackia*
- Veillonella*

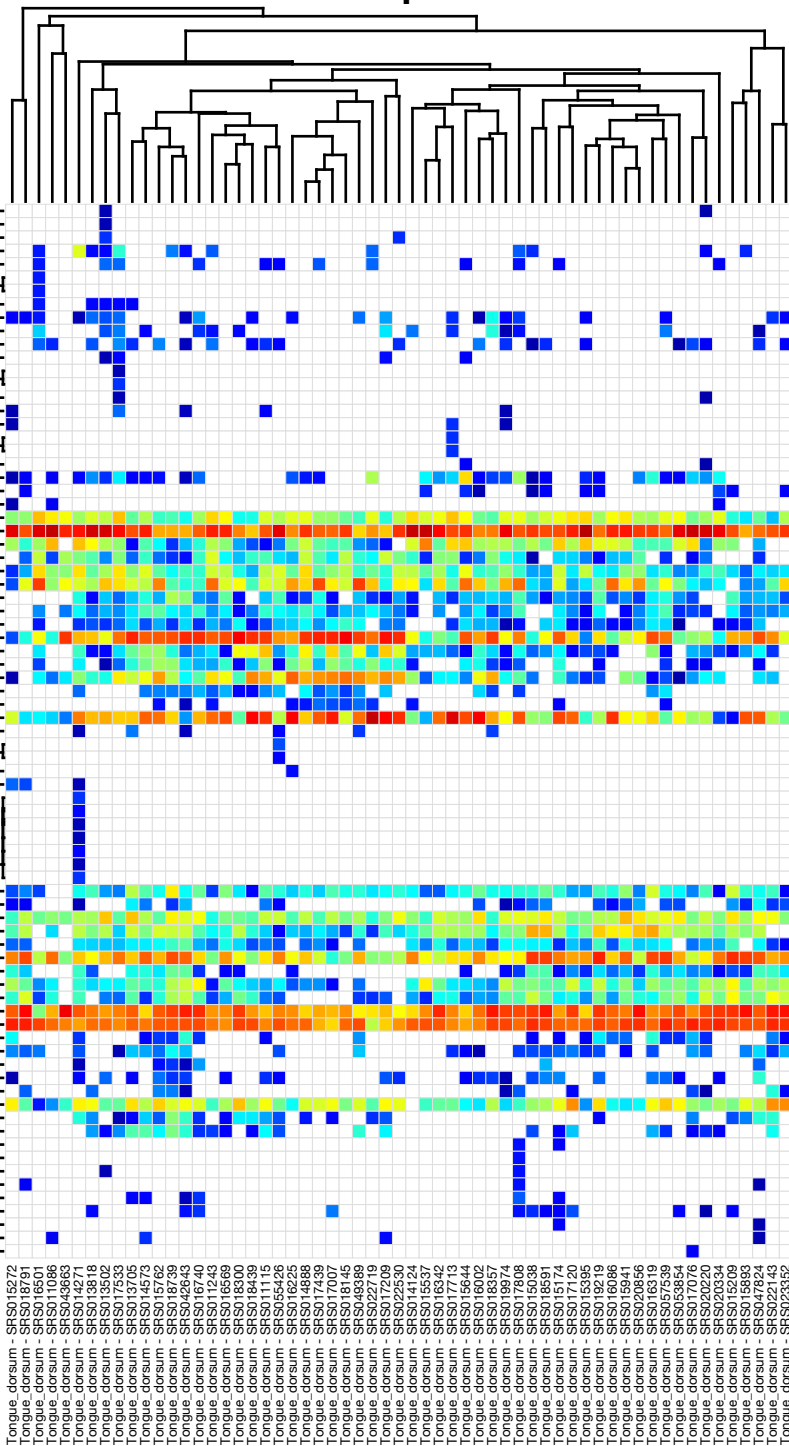
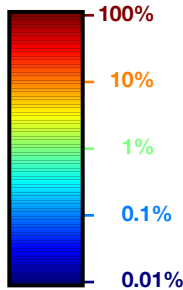
- Supragingival_plaque - SFS013836
- Supragingival_plaque - SFS015278
- Supragingival_plaque - SFS015574
- Supragingival_plaque - SFS015650
- Supragingival_plaque - SFS019353
- Supragingival_plaque - SFS019352
- Supragingival_plaque - SFS017068
- Supragingival_plaque - SFS015215
- Supragingival_plaque - SFS016575
- Supragingival_plaque - SFS016746
- Supragingival_plaque - SFS015944
- Supragingival_plaque - SFS020226
- Supragingival_plaque - SFS017227
- Supragingival_plaque - SFS011255
- Supragingival_plaque - SFS014578
- Supragingival_plaque - SFS016043
- Supragingival_plaque - SFS016043
- Supragingival_plaque - SFS0151244
- Supragingival_plaque - SFS016808
- Supragingival_plaque - SFS017691
- Supragingival_plaque - SFS022725
- Supragingival_plaque - SFS015394
- Supragingival_plaque - SFS019394
- Supragingival_plaque - SFS022149
- Supragingival_plaque - SFS056053
- Supragingival_plaque - SFS015947
- Supragingival_plaque - SFS014884
- Supragingival_plaque - SFS015859
- Supragingival_plaque - SFS015735
- Supragingival_plaque - SFS043755
- Supragingival_plaque - SFS017445
- Supragingival_plaque - SFS015158
- Supragingival_plaque - SFS015989
- Supragingival_plaque - SFS015959
- Supragingival_plaque - SFS016200
- Supragingival_plaque - SFS016092
- Supragingival_plaque - SFS017814
- Supragingival_plaque - SFS017025
- Supragingival_plaque - SFS020862
- Supragingival_plaque - SFS016380
- Supragingival_plaque - SFS052876
- Supragingival_plaque - SFS018665
- Supragingival_plaque - SFS018337
- Supragingival_plaque - SFS022536
- Supragingival_plaque - SFS020340
- Supragingival_plaque - SFS019980
- Supragingival_plaque - SFS015378
- Supragingival_plaque - SFS053630
- Supragingival_plaque - SFS018778
- Supragingival_plaque - SFS045313



Tongue Dorsum (16S)

Genera

Samples



- Barnesiella
- Coprococcus
- Faecalibacterium
- Abiotrophia
- Aggregatibacter
- Blautia
- Methylobacterium
- Propionibacterium
- Bacteroides
- Pasteurella
- Kingella
- Cardiobacterium
- Enhydrobacter
- Helicobacter
- Parabacteroides
- Staphylococcus
- Cryptobacterium
- Bulleidia
- Lactococcus
- Alistipes
- Corynebacterium
- Lactobacillus
- Bifidobacterium
- Granulicatella
- Streptococcus
- Rothia
- Actinobacillus
- Gemella
- Haemophilus
- Eubacterium
- Peptostreptococcus
- Fillifactor
- Fusobacterium
- Capnocytophaga
- Parvimonas
- Porphyromonas
- Peptococcus
- Planobacterium
- Neisseria
- Anaerovorax
- Olsenella
- Slackia
- Moraxella
- Alloscardovia
- Pelomonas
- Hallella
- Truepera
- Phenylbacterium
- Pseudomonas
- Ralstonia
- Roseateles
- Catonella
- Butyrivibrio
- Oritacterium
- Campylobacter
- Mogibacterium
- Actinomyces
- Centipeda
- Atopobium
- Megasphaera
- Prevotella
- Veillonella
- Moryella
- Selenomonas
- Mobiluncus
- Syntrophococcus
- Dialister
- Leptotrichia
- Tannerella
- Treponema
- Anaeroglobus
- Shuttleworthia
- Ruminococcus
- Parasutterella
- Mycoplasma
- Solobacterium
- Mannheimia
- Simonsiella
- Sporacetigenium

Tongue_dorsum - SRSO152722
 Tongue_dorsum - SRSO161791
 Tongue_dorsum - SRSO165001
 Tongue_dorsum - SRSO110886
 Tongue_dorsum - SRSO102563
 Tongue_dorsum - SRSO1404563
 Tongue_dorsum - SRSO138118
 Tongue_dorsum - SRSO135002
 Tongue_dorsum - SRSO175533
 Tongue_dorsum - SRSO137005
 Tongue_dorsum - SRSO145762
 Tongue_dorsum - SRSO1501762
 Tongue_dorsum - SRSO167789
 Tongue_dorsum - SRSO426643
 Tongue_dorsum - SRSO16740
 Tongue_dorsum - SRSO11243
 Tongue_dorsum - SRSO116569
 Tongue_dorsum - SRSO184389
 Tongue_dorsum - SRSO184389
 Tongue_dorsum - SRSO111115
 Tongue_dorsum - SRSO55426
 Tongue_dorsum - SRSO16225
 Tongue_dorsum - SRSO14888
 Tongue_dorsum - SRSO17007
 Tongue_dorsum - SRSO18145
 Tongue_dorsum - SRSO48389
 Tongue_dorsum - SRSO22719
 Tongue_dorsum - SRSO7209
 Tongue_dorsum - SRSO14124
 Tongue_dorsum - SRSO15537
 Tongue_dorsum - SRSO16342
 Tongue_dorsum - SRSO17713
 Tongue_dorsum - SRSO156044
 Tongue_dorsum - SRSO156044
 Tongue_dorsum - SRSO18357
 Tongue_dorsum - SRSO18974
 Tongue_dorsum - SRSO17808
 Tongue_dorsum - SRSO15038
 Tongue_dorsum - SRSO18591
 Tongue_dorsum - SRSO17120
 Tongue_dorsum - SRSO15385
 Tongue_dorsum - SRSO19219
 Tongue_dorsum - SRSO16066
 Tongue_dorsum - SRSO15941
 Tongue_dorsum - SRSO16319
 Tongue_dorsum - SRSO57639
 Tongue_dorsum - SRSO53854
 Tongue_dorsum - SRSO17076
 Tongue_dorsum - SRSO20220
 Tongue_dorsum - SRSO15209
 Tongue_dorsum - SRSO15209
 Tongue_dorsum - SRSO15893
 Tongue_dorsum - SRSO47824
 Tongue_dorsum - SRSO22143
 Tongue_dorsum - SRSO202352

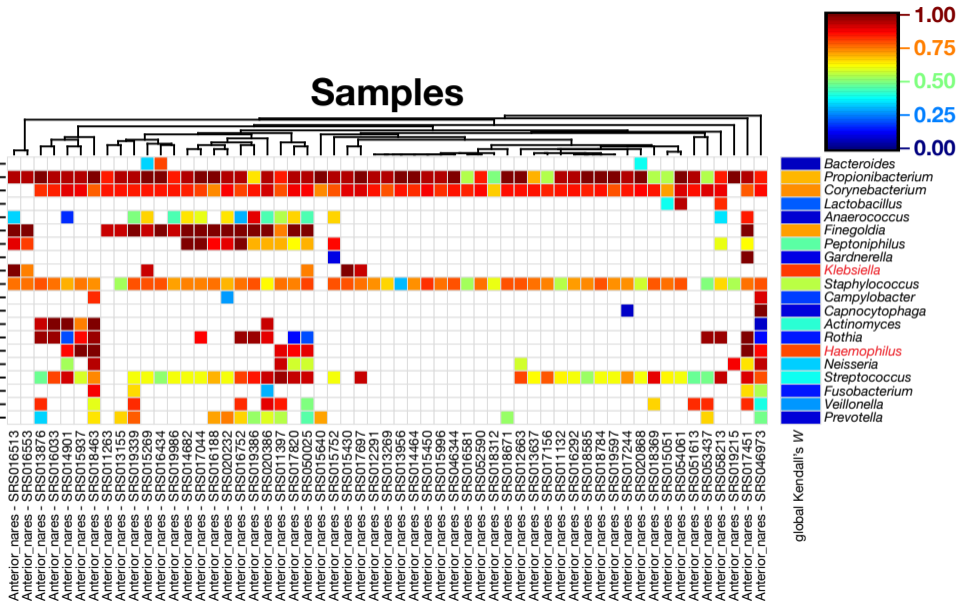
F

H

Genera

Anterior Nares

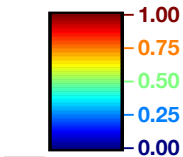
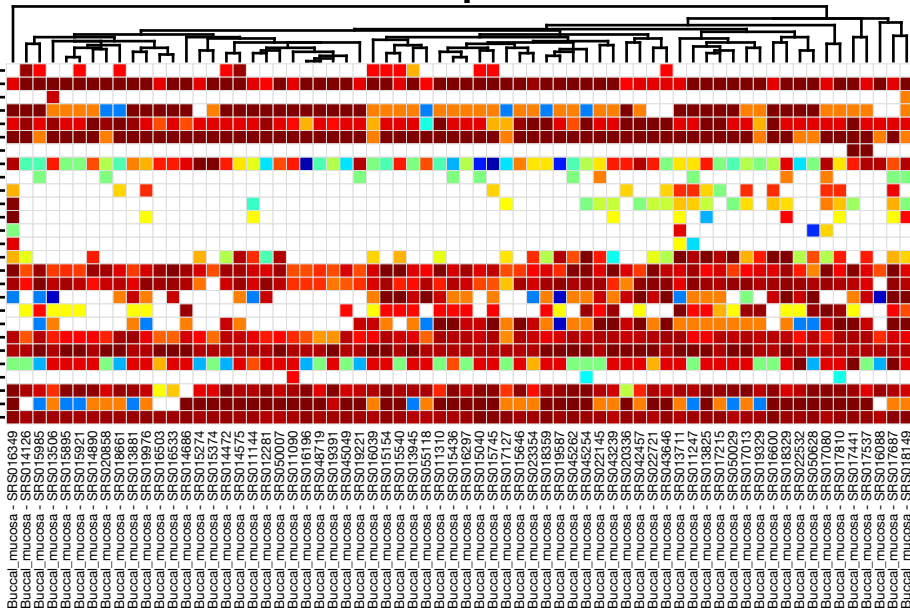
Samples



Genera

Buccal
Mucosa

Samples



- Acidovorax*
- Actinobacillus*
- Enterococcus*
- Capnocytophaga*
- Actinomyces*
- Aggregatibacter*
- Helicobacter*
- Veillonella*
- Lactococcus*
- Eubacterium*
- Bacteroides*
- Parabacteroides*
- Clostridium*
- Ruminococcus*
- Propionibacterium*
- Campylobacter*
- Fusobacterium*
- Selenomonas*
- Peptoniphilus*
- Porphyromonas*
- Prevotella*
- Haemophilus*
- Rothia*
- Lactobacillus*
- Neisseria*
- Leptotrichia*
- Streptococcus*

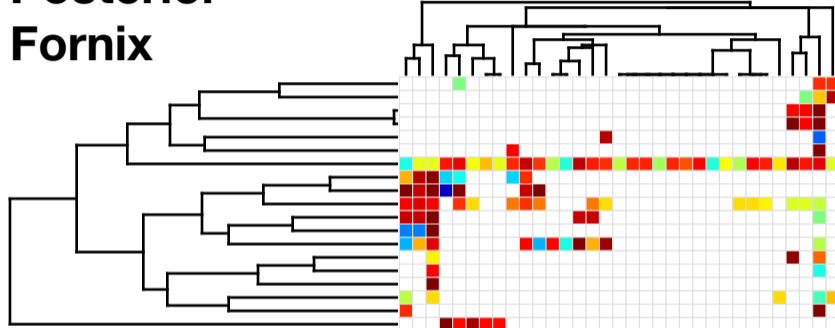
global Kendall's W



Genera

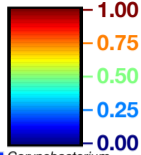
Posterior
Fornix

Samples



Posterior_fornix - SRS011269
Posterior_fornix - SRS013542
Posterior_fornix - SRS017497
Posterior_fornix - SRS015054
Posterior_fornix - SRS016191
Posterior_fornix - SRS015225
Posterior_fornix - SRS015425
Posterior_fornix - SRS016111
Posterior_fornix - SRS011355
Posterior_fornix - SRS015168
Posterior_fornix - SRS017700
Posterior_fornix - SRS011584
Posterior_fornix - SRS019379
Posterior_fornix - SRS051505
Posterior_fornix - SRS019989
Posterior_fornix - SRS020349
Posterior_fornix - SRS012294
Posterior_fornix - SRS016516
Posterior_fornix - SRS016559
Posterior_fornix - SRS052330
Posterior_fornix - SRS017520
Posterior_fornix - SRS019600
Posterior_fornix - SRS022158
Posterior_fornix - SRS022734
Posterior_fornix - SRS022545
Posterior_fornix - SRS014629
Posterior_fornix - SRS056695
Posterior_fornix - SRS057807
Posterior_fornix - SRS042428
Posterior_fornix - SRS014494
Posterior_fornix - SRS018769
Posterior_fornix - SRS056796
Posterior_fornix - SRS050184

global Kendall's W

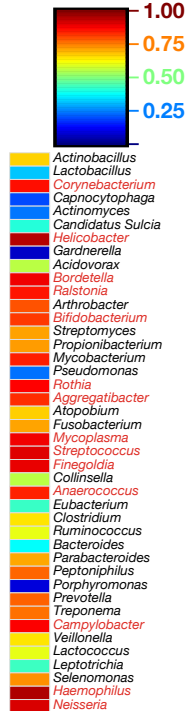
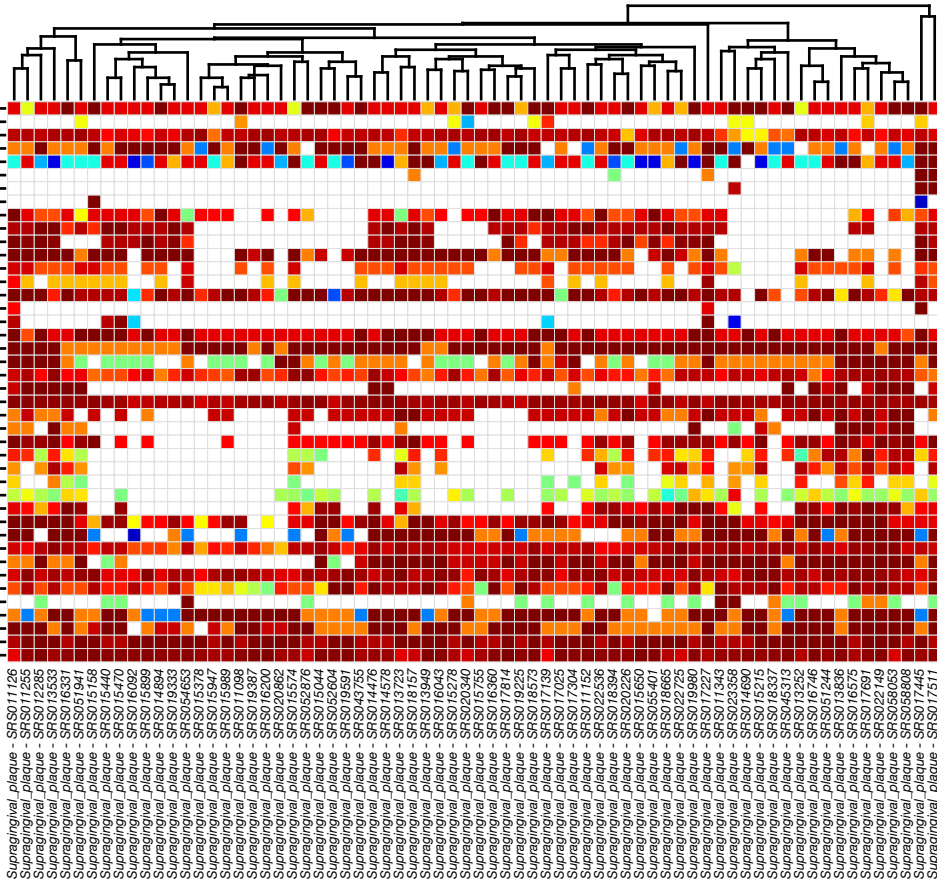
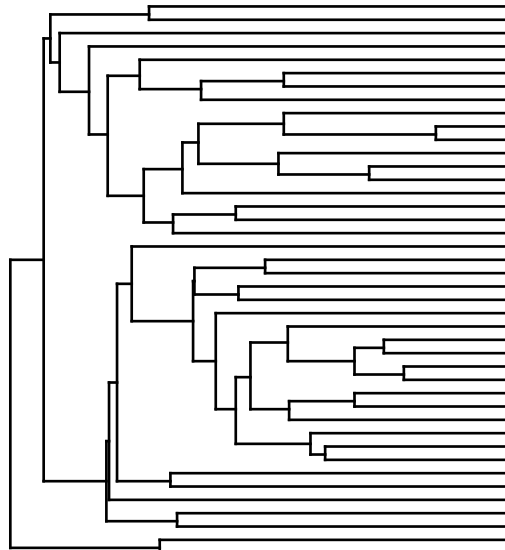


- Corynebacterium*
- Neisseria*
- Eubacterium*
- Parabacteroides*
- Clostridium*
- Propionibacterium*
- Lactobacillus*
- Anaerococcus*
- Finegoldia*
- Prevotella*
- Atopobium*
- Peptoniphilus*
- Gardnerella*
- Bacteroides*
- Fusobacterium*
- Leptotrichia*
- Streptococcus*
- Veillonella*
- Pseudomonas*

Supragingival Plaque

Genera

Samples



global Kendall's W

- Actinobacillus
- Lactobacillus
- Corynebacterium
- Capnocytophaga
- Actinomyces
- Candidatus Sulcia
- Helicobacter
- Gardnerella
- Acidovorax
- Bordetella
- Ralstonia
- Arthrobacter
- Bifidobacterium
- Streptomyces
- Propionibacterium
- Mycobacterium
- Pseudomonas
- Rothia
- Aggregatibacter
- Atopobium
- Fusobacterium
- Mycoplasma
- Streptococcus
- Finegoldia
- Collinsella
- Anaerococcus
- Eubacterium
- Clostridium
- Ruminococcus
- Bacteroides
- Parabacteroides
- Peptoniphilus
- Porphyromonas
- Prevotella
- Treponema
- Campylobacter
- Veillonella
- Lactococcus
- Leptotrichia
- Selenomonas
- Haemophilus
- Neisseria

K

