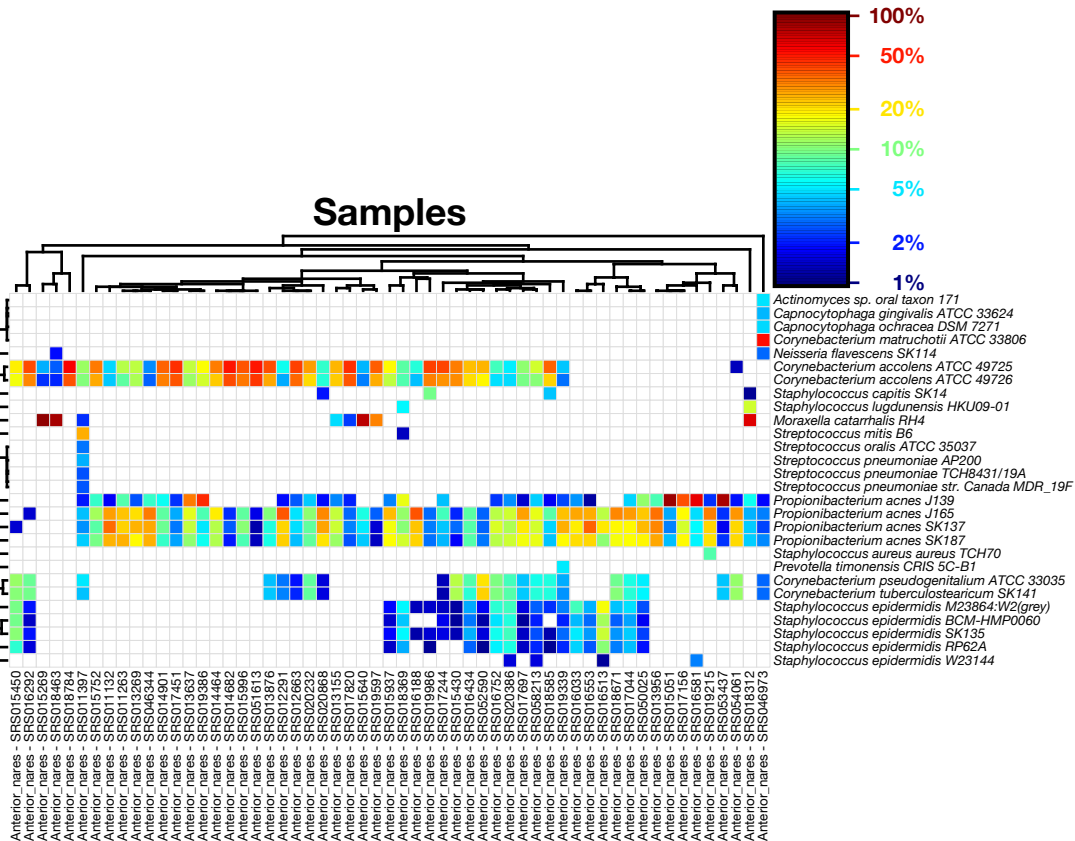
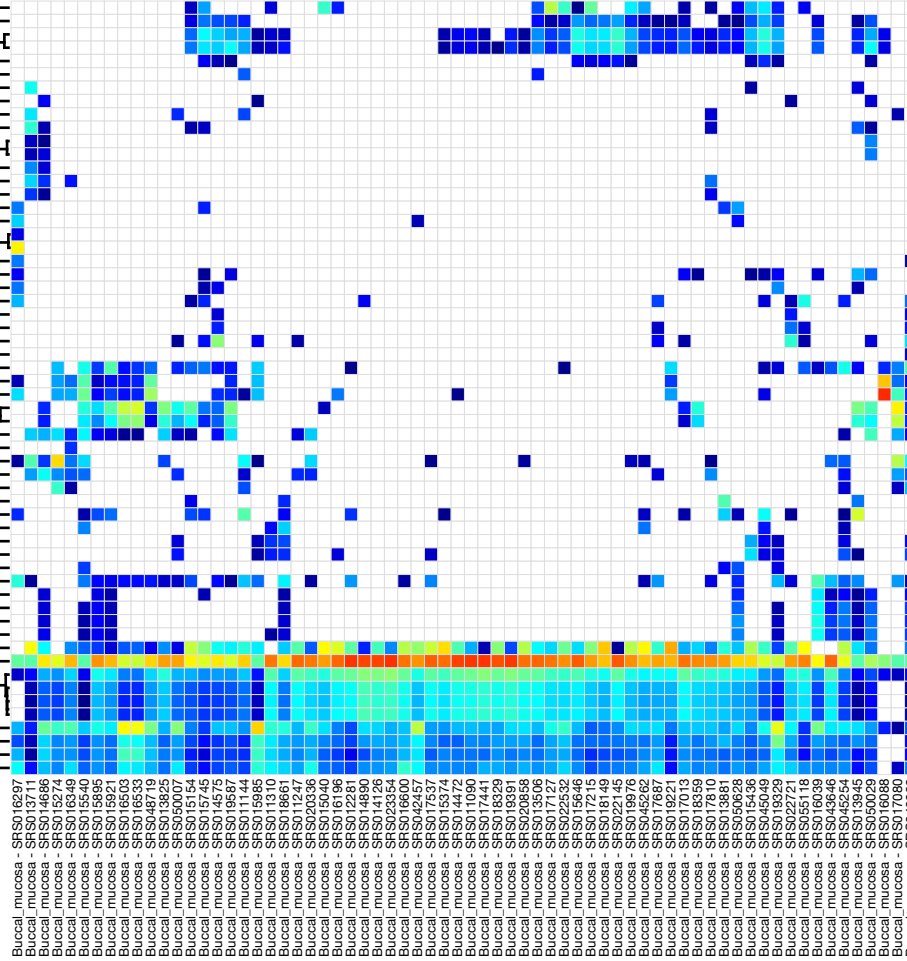
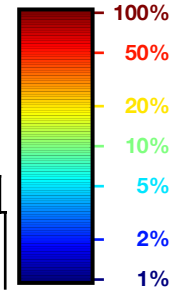


C**Strains****Anterior
Nares****Samples**

D

Buccal Mucosa

Strains**Samples**

- Granulicatella elegans* ATCC 700633
- Haemophilus influenzae* 22.4-21
- Haemophilus influenzae* 6P18H1
- Haemophilus influenzae* R266
- Haemophilus influenzae* HK1212
- Neisseria cinerea* ATCC 14685
- Fusobacterium* sp. 1_1_41FAA
- Granulicatella adiacens* ATCC 49175
- Campylobacter concisus* 13826
- Fusobacterium* sp. 2_1_31
- Actinomyces odontolyticus* ATCC 17982
- Actinomyces odontolyticus* F0309
- Oribacterium sinus* F0268
- Prevotella melaninogenica* ATCC 25845
- Prevotella melaninogenica* D18
- Capnocytophaga gingivialis* ATCC 33624
- Fusobacterium nucleatum* subsp. *polymorphum* ATCC 10953
- Capnocytophaga ochracea* DSM 7271
- Leptotrichia hofstadii* F0254
- Leptotrichia buccalis* DSM 1135
- Aggregatibacter aphrophilus* N8700
- Neisseria* sp. oral taxon 014 str. F0314
- Corynebacterium matrucotii* ATCC 33806
- Neisseria flavescens* NRL30031/H210
- Neisseria flavescens* SK1114
- Neisseria subflava* NJ9703
- Prevotella* sp. oral taxon 472 str. F0295
- Actinomyces* sp. oral taxon 171
- Rothia dentocariosa* ATCC 17931
- Rothia dentocariosa* M567
- Rothia mucilaginosa* ATCC 25296
- Rothia mucilaginosa* DY-18
- Streptococcus parasanguinis* ATCC 15912
- Bacteroides stercoris* ATCC 43183
- Streptococcus salivarius* SK126
- Veillonella dispar* ATCC 17748
- Streptococcus thermophilus* LMD-9
- Neisseria mucosa* ATCC 25996
- Neisseria sicca* ATCC 29256
- Catonella morbi* ATCC 51271
- Streptococcus gordonii* str. Challis substr. CH1
- Streptococcus* sp. 2_1_36FAA
- Capnocytophaga sputigena* ATCC 33612 strain Capno
- Streptococcus sanguinis* SK36
- Veillonella parvula* DSM 2008
- Veillonella parvula* ATCC 17745
- Veillonella* sp. 6_1_27
- Veillonella* sp. 3_1_44
- Gemella haemolysans* ATCC 10379
- Streptococcus mitis* B6
- Streptococcus pneumoniae* AP200
- Streptococcus pneumoniae* TCH8431/19A
- Streptococcus pneumoniae* str. Canada MDR_19A
- Streptococcus pneumoniae* str. Canada MDR_19F
- Streptococcus oralis* ATCC 35037
- Streptococcus mitis* ATCC 6249
- Streptococcus* sp. 73H25AP F0408
- Streptococcus* sp. M143

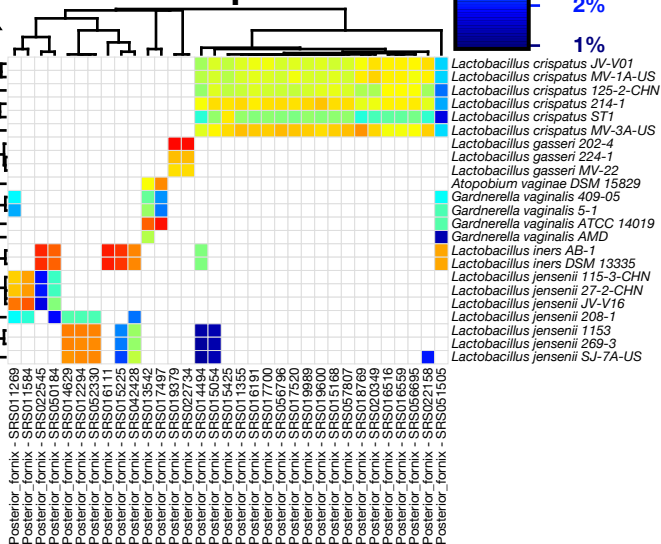
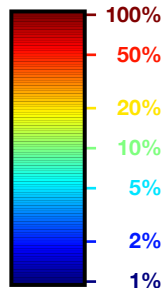
Buccal_mucosa - SFS016297
 Buccal_mucosa - SFS013161
 Buccal_mucosa - SFS013581
 Buccal_mucosa - SFS015274
 Buccal_mucosa - SFS016349
 Buccal_mucosa - SFS016540
 Buccal_mucosa - SFS015895
 Buccal_mucosa - SFS015921
 Buccal_mucosa - SFS016533
 Buccal_mucosa - SFS016533
 Buccal_mucosa - SFS048719
 Buccal_mucosa - SFS013825
 Buccal_mucosa - SFS050007
 Buccal_mucosa - SFS015154
 Buccal_mucosa - SFS013145
 Buccal_mucosa - SFS013475
 Buccal_mucosa - SFS019587
 Buccal_mucosa - SFS011144
 Buccal_mucosa - SFS015885
 Buccal_mucosa - SFS011310
 Buccal_mucosa - SFS018661
 Buccal_mucosa - SFS020336
 Buccal_mucosa - SFS015040
 Buccal_mucosa - SFS016196
 Buccal_mucosa - SFS012281
 Buccal_mucosa - SFS014690
 Buccal_mucosa - SFS020336
 Buccal_mucosa - SFS016600
 Buccal_mucosa - SFS042457
 Buccal_mucosa - SFS017537
 Buccal_mucosa - SFS015374
 Buccal_mucosa - SFS014472
 Buccal_mucosa - SFS017444
 Buccal_mucosa - SFS018329
 Buccal_mucosa - SFS019391
 Buccal_mucosa - SFS020658
 Buccal_mucosa - SFS013506
 Buccal_mucosa - SFS018576
 Buccal_mucosa - SFS022437
 Buccal_mucosa - SFS015646
 Buccal_mucosa - SFS017215
 Buccal_mucosa - SFS018149
 Buccal_mucosa - SFS022145
 Buccal_mucosa - SFS018576
 Buccal_mucosa - SFS019628
 Buccal_mucosa - SFS017687
 Buccal_mucosa - SFS019821
 Buccal_mucosa - SFS017013
 Buccal_mucosa - SFS018559
 Buccal_mucosa - SFS017810
 Buccal_mucosa - SFS019528
 Buccal_mucosa - SFS019328
 Buccal_mucosa - SFS015436
 Buccal_mucosa - SFS045049
 Buccal_mucosa - SFS019329
 Buccal_mucosa - SFS022721
 Buccal_mucosa - SFS019318
 Buccal_mucosa - SFS016103
 Buccal_mucosa - SFS043646
 Buccal_mucosa - SFS045254
 Buccal_mucosa - SFS013945
 Buccal_mucosa - SFS050029
 Buccal_mucosa - SFS016088
 Buccal_mucosa - SFS0143239



Strains

Posterior Fornix

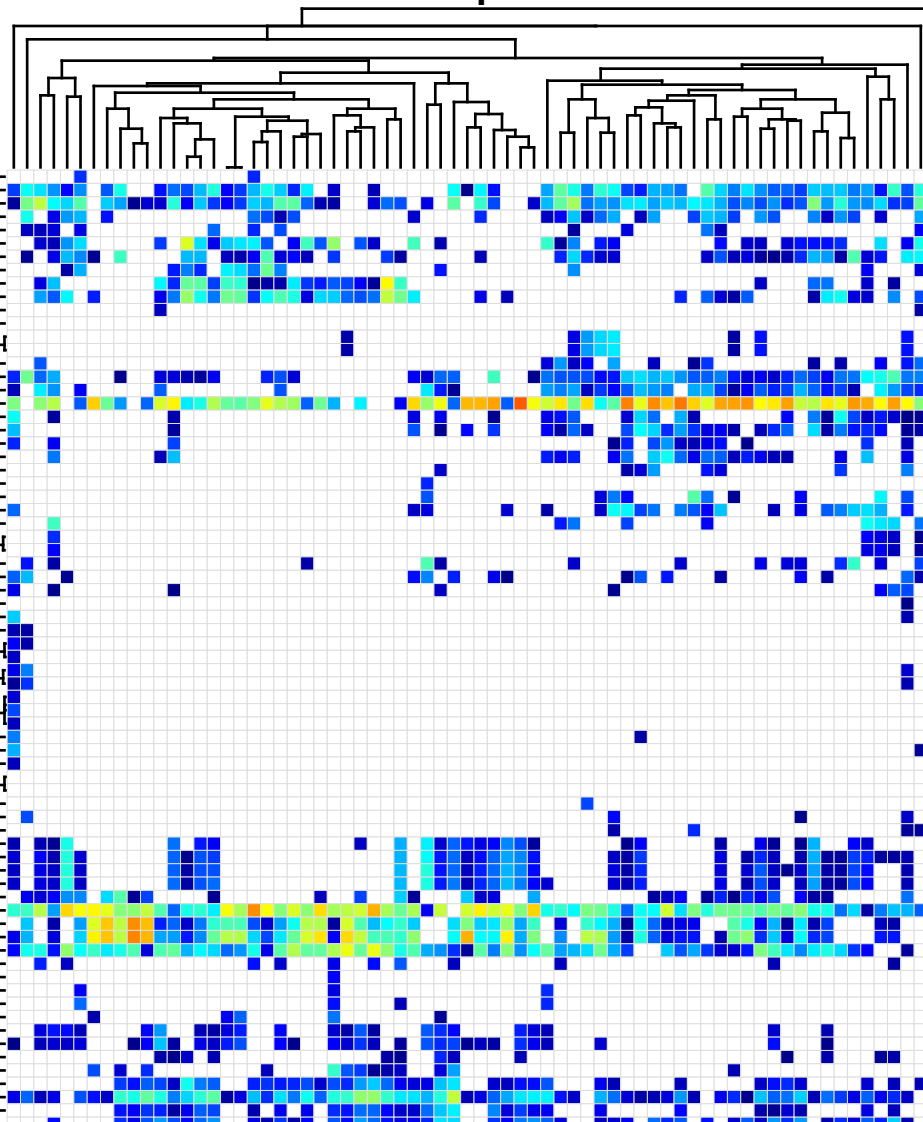
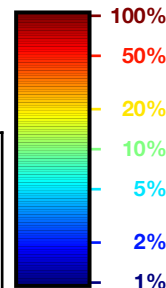
Samples



Supragingival Plaque

Strains

Samples



- Actinomyces sp. oral taxon 848 str. F0332
- Capnocytophaga gingivalis ATCC 33624
- Capnocytophaga sputigena ATCC 33612 strain Capno
- Cardiobacterium hominis ATCC 15826
- Eikenella corrodens ATCC 23834
- Aggregatibacter aphrophilus NJ8700
- Neisseria elongata subsp. glycolytica ATCC 29315
- Neisseria sp. oral taxon 014 str. F0314
- Neisseria mucosa ATCC 25996
- Neisseria sicca ATCC 29256
- Fusobacterium periodonticum ATCC 33693
- Actinomyces odontolyticus ATCC 17982
- Bacteroidetes oral taxon 274 str. F0058
- Bacteroidetes sp. F0058
- Campylobacter showae RM3277
- Capnocytophaga ochracea DSM 7271
- Fusobacterium nucleatum subsp. polymorphum ATCC 10953
- Corynebacterium matruchotii ATCC 33806
- Leptotrichia buccalis DSM 1135
- Leptotrichia hofstadii F0254
- Candidate division TM7 single-cell isolate TM7b
- candidate division TM7 single-cell isolate TM7c
- Selenomonas artemidis
- Abiotrophia defectiva ATCC 49176
- Prevotella sp. oral taxon 317 str. F0108
- Selenomonas noxia ATCC 43541
- Neisseria flavescens SK114
- Neisseria flavescens NRL30031/H210
- Neisseria subflava NJ9703
- Prevotella sp. oral taxon 472 str. F0295
- Campylobacter gracilis RM3268
- Campylobacter concisus 13826
- Campylobacter rectus RM3267
- Selenomonas sputigena ATCC 35185
- Dialister invisus DSM 18470
- Fusobacterium sp. 3_1_33
- Fusobacterium sp. D11
- Prevotella oris C735
- Prevotella oris F0302
- Atopobium rimae ATCC 49626
- Prevotella veroralis F0319
- Selenomonas sp. 67H29BP F0410
- candidate division TM7 single-cell isolate TM7a
- Prevotella tannerae ATCC 51259
- Fusobacterium sp. 7_1
- Prevotella melaninogenica ATCC 25845
- Prevotella melaninogenica D19
- Treponema denticola ATCC 35405
- Porphyromonas endodontalis ATCC 35406
- Treponema vincentii ATCC 35580
- Veillonella parvula DSM 2008
- Veillonella parvula ATCC 17745
- Veillonella sp. 6_1_27
- Veillonella sp. 3_1_44
- Kingella oralis ATCC 51147
- Actinomyces sp. oral taxon 171
- Rothia dentocariosa ATCC 17931
- Rothia dentocariosa M56
- Streptococcus sanguinis SK36
- Catonella morbi ATCC 51271
- Granulicatella elegans ATCC 700633
- Haemophilus influenzae 6P18H1
- Haemophilus influenzae R2866
- Gemella haemolysans ATCC 10379
- Streptococcus gordonii str. Challis substr. CH1
- Streptococcus sp. 2_1_36FAA
- Granulicatella adiacens ATCC 49175
- Streptococcus mitis B6
- Streptococcus mitis ATCC 6249
- Streptococcus oralis ATCC 35037
- Streptococcus sp. 73H26AP F0408
- Streptococcus sp. M143

- Supragingival plaque - SRS013836
- Supragingival plaque - SRS011255
- Supragingival plaque - SRS012285
- Supragingival plaque - SRS018685
- Supragingival plaque - SRS017249
- Supragingival plaque - SRS015378
- Supragingival plaque - SRS011098
- Supragingival plaque - SRS015989
- Supragingival plaque - SRS015947
- Supragingival plaque - SRS011152
- Supragingival plaque - SRS011504
- Supragingival plaque - SRS013949
- Supragingival plaque - SRS018573
- Supragingival plaque - SRS016360
- Supragingival plaque - SRS015470
- Supragingival plaque - SRS014884
- Supragingival plaque - SRS015755
- Supragingival plaque - SRS043755
- Supragingival plaque - SRS015158
- Supragingival plaque - SRS019333
- Supragingival plaque - SRS017814
- Supragingival plaque - SRS017025
- Supragingival plaque - SRS015650
- Supragingival plaque - SRS019387
- Supragingival plaque - SRS019225
- Supragingival plaque - SRS019226
- Supragingival plaque - SRS018337
- Supragingival plaque - SRS020340
- Supragingival plaque - SRS054653
- Supragingival plaque - SRS011126
- Supragingival plaque - SRS018157
- Supragingival plaque - SRS016331
- Supragingival plaque - SRS014578
- Supragingival plaque - SRS059808
- Supragingival plaque - SRS015572
- Supragingival plaque - SRS013252
- Supragingival plaque - SRS051244
- Supragingival plaque - SRS051941
- Supragingival plaque - SRS022149
- Supragingival plaque - SRS020526
- Supragingival plaque - SRS014476
- Supragingival plaque - SRS016746
- Supragingival plaque - SRS016043
- Supragingival plaque - SRS017511
- Supragingival plaque - SRS019053
- Supragingival plaque - SRS018394
- Supragingival plaque - SRS019980
- Supragingival plaque - SRS020226
- Supragingival plaque - SRS052604
- Supragingival plaque - SRS022729
- Supragingival plaque - SRS052876
- Supragingival plaque - SRS017691
- Supragingival plaque - SRS017227
- Supragingival plaque - SRS045313

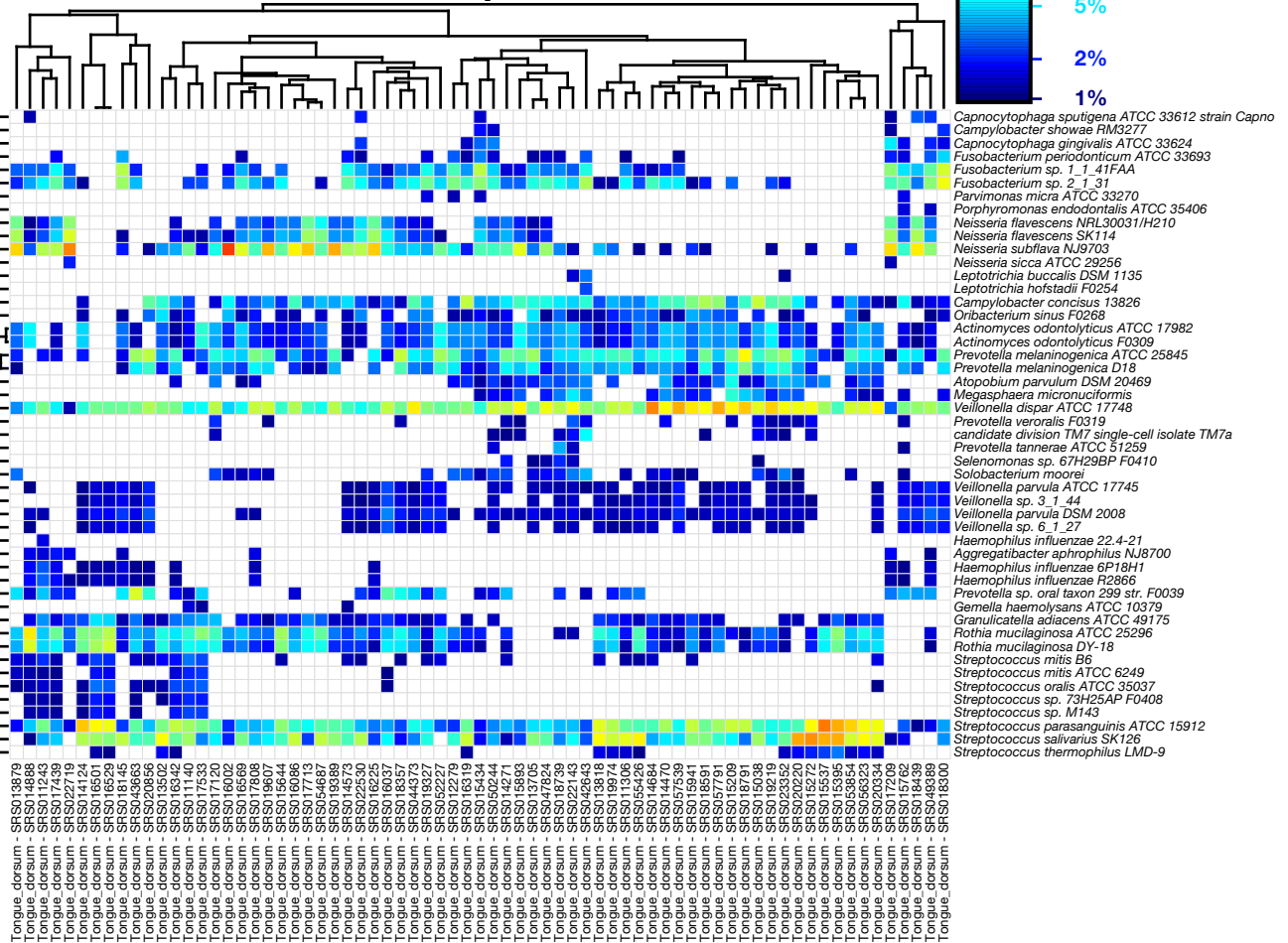
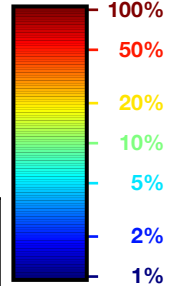




Strains

Tongue
Dorsum

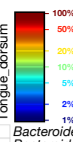
Samples



Body Sites



Anterior_nares
Buccal_mucosa
Posterior_fornix
Stool
Supragingival_plaque
Tongue_dorsum



Strains

